



Image may be representation.
See specifications for product details.



ADUM121N1WBRZ-RL7

Manufacturer Part Number	ADUM121N1WBRZ-RL7
Manufacturer	Analog Devices, Inc.
Allelco Part Number	32D-ADUM121N1WBRZ-RL7
ECAD Model	PCB Symbol, Footprint & 3D Model
Parts Description	DGTL ISO 3000VRMS 2CH GP 8SOIC
Package	8-SOIC (0.154", 3.90mm Width)
Data sheet	ADuM120N,21N.pdf ADuM120N,21N.pdf
RoHs Status	ROHS3 Compliant

Get a Quote

ADUM121N1WBRZ-RL7 - Analog Devices Inc..New Original in Stock. Download Linear Technology ADUM121N1WBRZ-RL7 datasheet/specifications on AllelcoElec.com. Request a quote for ADUM121N1WBRZ-RL7, please send us email: info@allelco.com

Specifications

ADUM121N1WBRZ-RL7 Tech Specifications
ADUM121N1WBRZ-RL7 - Analog Devices Inc. technical specifications, attributes, parameters

Product Attribute	Attribute Value	Product Attribute	Attribute Value
Manufacturer	Analog Devices, Inc.	Package	Tape & Reel (TR)
Voltage - Supply	1.7V ~ 5.5V	Operating Temperature	-40°C ~ 125°C
Voltage - Isolation	3000Vrms	Number of Channels	2
Type	General Purpose	Mounting Type	Surface Mount
Technology	Magnetic Coupling	Isolated Power	No
Supplier Device Package	8-SOIC	Inputs - Side 1/Side 2	1/1
Series	Automotive	Data Rate	150Mbps
Rise / Fall Time (Typ)	2.5ns, 2.5ns	Common Mode Transient Immunity (Min)	75kV/μs
Pulse Width Distortion (Max)	3ns	Channel Type	Unidirectional
Propagation Delay tPLH / tPHL (Max)	13ns, 13ns	Base Product Number	ADUM121
Package / Case	8-SOIC (0.154", 3.90mm Width)		

Parts with Similar Specifications

The three parts on the right have similar specifications to Analog Devices Inc. ADUM121N1WBRZ-RL7

Product Attribute				
Part Number	ADUM121N1WBRZ-RL7	ADUM120N1BRZ-RL7	ADUM1210BRZ	ADUM1241ARZ
Manufacturer	Analog Devices Inc.	Analog Devices Inc.	Analog Devices Inc.	Analog Devices Inc.
Propagation Delay tPLH / tPHL (Max)	13ns, 13ns	13ns, 13ns	50ns, 50ns	180ns, 180ns
Supplier Device Package	8-SOIC	8-SOIC	8-SOIC	8-SOIC
Voltage - Supply	1.7V ~ 5.5V	1.7V ~ 5.5V	2.7V ~ 5.5V	2.25V ~ 3.6V
Package	Tape & Reel (TR)	Tape & Reel (TR)	Tube	Tube
Type	General Purpose	General Purpose	General Purpose	General Purpose
Mounting Type	Surface Mount	Surface Mount	Surface Mount	Surface Mount
Package / Case	8-SOIC (0.154", 3.90mm Width)	8-SOIC (0.154", 3.90mm Width)	8-SOIC (0.154", 3.90mm Width)	8-SOIC (0.154", 3.90mm Width)
Operating Temperature	-40°C ~ 125°C	-40°C ~ 125°C	-40°C ~ 105°C	-40°C ~ 125°C
Isolated Power	No	No	No	No
Data Rate	150Mbps	150Mbps	10Mbps	2Mbps
Technology	Magnetic Coupling	Magnetic Coupling	Magnetic Coupling	Magnetic Coupling
Rise / Fall Time (Typ)	2.5ns, 2.5ns	2.5ns, 2.5ns	2.5ns, 2.5ns	2ns, 2ns
Base Product Number	ADUM121	ADUM120	ADUM1210	ADUM1241
Voltage - Isolation	3000Vrms	3000Vrms	2500Vrms	3000Vrms
Inputs - Side 1/Side 2	1/1	2/0	2/0	1/1
Pulse Width Distortion (Max)	3ns	3ns	3ns	8ns
Common Mode Transient Immunity (Min)	75kV/μs	75kV/μs	25kV/μs	25kV/μs
Channel Type	Unidirectional	Unidirectional	Unidirectional	Unidirectional
Number of Channels	2	2	2	2
Series	Automotive	iCoupler®	iCoupler®	iCoupler®


ADUM121N1WBRZ-RL7 Datasheet PDF

Download ADUM121N1WBRZ-RL7 pdf datasheets and Analog Devices Inc. documentation for ADUM121N1WBRZ-RL7 - Analog Devices Inc..

Datasheets

ADuM120N,21N.pdf

Other Related Documents

 Tape and Reel Packaging.pdf

HTML Datasheet

 ADuM120N,21N.pdf

Customers Also Interested in

Recommended Products



ADUM1220BRWZ
Analog Devices Inc.
ISOLATED HALF-BRIDGE DRIVER

ADUM120N1BRZ-RL7
Analog Devices Inc.
DGTL ISO 3000VRMS 2CH GP 8SOIC

ADUM1210BRZ
Analog Devices Inc.
DGTL ISO 2500VRMS 2CH GP 8SOIC

ADUM1241ARZ
Analog Devices Inc.
DGTL ISO 3000VRMS 2CH GP 8SOIC

ADUM1240ARZ
Analog Devices Inc.
DGTL ISO 3000VRMS 2CH GP 8SOIC

ADUM121N1WBZ
Analog Devices Inc.
DGTL ISO 3000VRMS 2CH GP 8SOIC



ADUM120N1BRZ
Analog Devices Inc.
DGTL ISO 3000VRMS 2CH GP 8SOIC

ADUM121N0BRZ-RL7
Analog Devices Inc.
DGTL ISO 3000VRMS 2CH GP 8SOIC

ADUM120N0BRZ-RL7
Analog Devices Inc.
DGTL ISO 3000VRMS 2CH GP 8SOIC

ADUM1241ARZ-RL7
Analog Devices Inc.
DGTL ISO 3000VRMS 2CH GP 8SOIC

ADUM1240ARZ-RL7
Analog Devices Inc.
DGTL ISO 3000VRMS 2CH GP 8SOIC

ADUM1234BRWZ
Analog Devices Inc.
DGTL ISO 2.5KV GATE DRVR 16SOIC



ADUM121N1BRZ-RL7
Analog Devices Inc.
DGTL ISO 3000VRMS 2CH GP 8SOIC

ADUM121N1BRZ
Analog Devices Inc.
DGTL ISO 3000VRMS 2CH GP 8SOIC

ADUM1201WURZ-RL7
Analog Devices Inc.
DGTL ISO 2500VRMS 2CH GP 8SOIC

ADUM1230BRWZ
Analog Devices Inc.
IC ISOLATOR DGTL 2CH 1A 16-SOIC

ADUM1223BRWZ
Analog Devices Inc.
DIGITAL ISOLATOR 8SOIC

ADUM1233BRWZ
Analog Devices Inc.
DGTL ISO 2.5KV GATE DRVR 16SOIC

Shipment

Delivery Time

In-stock items can be shipped within 24 hours. Some parts will be arranged for delivery within 1-2 days from the date all items arrive at our warehouse. And Allelco ships order once a day at about 17:00, except Sunday. Once the goods are shipped, the estimated delivery time depends on the shipping methods and Delivery destination. The table below shows are the logistic time for some common countries.

Delivery Cost

- > Use your express account for shipment if you have one.
 - > Use our account for the shipment. Refer to the table below for the approximate charges.
- (Different time frame / countries / package size has different price.)

Delivery Method

- > Global Common Shipment by DHL / UPS / FedEx / TNT / EMS / SF we support.
- > Others more shipping ways, please get in touch with your customer manager.

Common Countries Logistic Time Reference

Region	Country	Logistic Time(Day)
America	United States	5
	Brazil	7
Europe	Germany	5
	United Kingdom	4
	Italy	5
Oceania	Australia	6
	New Zealand	7
Asia	India	6
	Japan	7
Middle East	Israel	6

DHL & FedEx Shipment Charges Reference

Shipment charges(KG)	Reference DHL(USD\$)
0.00kg-1.00kg	USD\$60.00
1.00kg-2.00kg	USD\$70.00
2.00kg-3.00kg	USD\$80.00

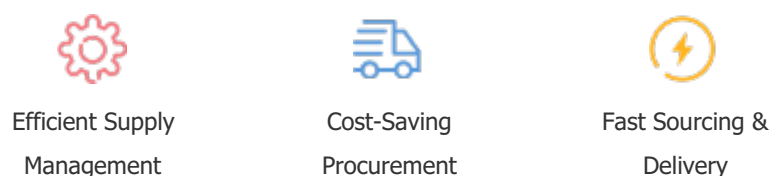
Note: The above table is for reference only. There may have some data bias for the uncontrollable factors. Contact us if you have any questions.

Payment Support

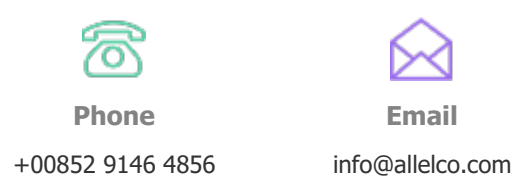
The payment method can be chosen from the methods shown below:
Wire Transfer (T/T, Bank Transfer), Western Union, Credit card, PayPal.



Your Faithful Supply Chain Partner -



Contact us if you have any questions.



Certifications & Memberships



[View More](#)

Contact us

Address: Flat/Rm C 13/F Harvard Commercial Building 105-111 Thomson Road, Wan Chai, Hong Kong
Phone: +00852 9146 4856
Fax: +00852 3010 8510
Email: info@allelco.com