

Image may be representation.  
See specifications for product details.



## ATSAMD21E18A-AUT

Manufacturer Part Number **ATSAMD21E18A-AUT**

Manufacturer **Microchip Technology**

Allelco Part Number **32D-ATSAMD21E18A-AUT**

ECAD Model PCB Symbol, Footprint & 3D Mode

Parts Description **IC MCU 32BIT 256KB FLASH 32TQFP**

Package **32-TQFP**

Data sheet **[SAM D21/DA1 Family Datasheet.pdf](#)**

RoHs Status **ROHS3 Compliant**

**Get a Quote**

ATSAMD21E18A-AUT - Microchip Technology. New Original in Stock. Download Linear Technology ATSAMD21E18A-AUT datasheet/specifications on AllelcoElec.com.  
Request a quote for ATSAMD21E18A-AUT, please send us email: [info@allelco.com](mailto:info@allelco.com)

## Specifications

ATSAMD21E18A-AUT Tech Specifications

ATSAMD21E18A-AUT - Microchip Technology technical specifications, attributes, parameters

Product Attribute	Attribute Value	Product Attribute	Attribute Value
Manufacturer	Microchip Technology	Oscillator Type	Internal
Voltage - Supply (Vcc/Vdd)	1.62V ~ 3.6V	Operating Temperature	-40°C ~ 85°C (TA)
Supplier Device Package	32-TQFP (7x7)	Number of I/O	26
Speed	48MHz	Mounting Type	Surface Mount
Series	SAM D21E, Functional Safety (FuSa)	EEPROM Size	-
RAM Size	32K x 8	Data Converters	A/D 10x12b; D/A 1x10b
Program Memory Type	FLASH	Core Size	32-Bit Single-Core
Program Memory Size	256KB (256K x 8)	Core Processor	ARM® Cortex®-M0+
Peripherals	Brown-out Detect/Reset, DMA, I <sup>2</sup> S, POR, PWM, WDT	Connectivity	I <sup>2</sup> C, LINbus, SPI, UART/USART, USB
Package / Case	32-TQFP	Base Product Number	ATSAMD21
Package	Tape & Reel (TR)		

## Parts with Similar Specifications

The three parts on the right have similar specifications to Microchip Technology ATSAMD21E18A-AUT

Product Attribute				
Part Number	ATSAMD21E18A-AUT	<a href="#">ATSAMD21G16B-MU</a>	<a href="#">ATSAMD21E18A-AU</a>	<a href="#">ATSAMD21E18A-AU</a>
Manufacturer	Microchip Technology	Microchip Technology	Microchip Technology	Atmel
Voltage - Supply (Vcc/Vdd)	1.62V ~ 3.6V	1.62V ~ 3.6V	1.62V ~ 3.6V	1.62V ~ 3.6V
Oscillator Type	Internal	Internal	Internal	Internal
Base Product Number	ATSAMD21	ATSAMD21	ATSAMD21	ATSAMD21
Speed	48MHz	48MHz	48MHz	48MHz
Supplier Device Package	32-TQFP (7x7)	48-QFN (7x7)	32-TQFP (7x7)	32-TQFP (7x7)
Package / Case	32-TQFP	48-VFQFN Exposed Pad	32-TQFP	32-TQFP
Core Processor	ARM® Cortex®-M0+	ARM® Cortex®-M0+	ARM® Cortex®-M0+	ARM® Cortex®-M0+
RAM Size	32K x 8	8K x 8	32K x 8	32K x 8
Number of I/O	26	38	26	26
EEPROM Size	-	-	-	-
Program Memory Size	256KB (256K x 8)	64KB (64K x 8)	256KB (256K x 8)	256KB (256K x 8)
Data Converters	A/D 10x12b; D/A 1x10b	A/D 14x12b; D/A 1x10b	A/D 10x12b; D/A 1x10b	A/D 10x12b; D/A 1x10b
Series	SAM D21E, Functional Safety (FuSa)	SAM D21G, Functional Safety (FuSa)	SAM D21E, Functional Safety (FuSa)	SAM D21E, Functional Safety (FuSa)
Core Size	32-Bit Single-Core	32-Bit Single-Core	32-Bit Single-Core	32-Bit Single-Core
Connectivity	I <sup>2</sup> C, LINbus, SPI, UART/USART, USB	I <sup>2</sup> C, LINbus, SPI, UART/USART, USB	I <sup>2</sup> C, LINbus, SPI, UART/USART, USB	I <sup>2</sup> C, LINbus, SPI, UART/USART, USB
Peripherals	Brown-out Detect/Reset, DMA, I <sup>2</sup> S, POR, PWM, WDT	Brown-out Detect/Reset, DMA, I <sup>2</sup> S, POR, PWM, WDT	Brown-out Detect/Reset, DMA, I <sup>2</sup> S, POR, PWM, WDT	Brown-out Detect/Reset, DMA, I <sup>2</sup> S, POR, PWM, WDT
Mounting Type	Surface Mount	Surface Mount	Surface Mount	Surface Mount
Program Memory Type	FLASH	FLASH	FLASH	FLASH
Package	Tape & Reel (TR)	Tray	Tray	Bulk
Operating Temperature	-40°C ~ 85°C (TA)	-40°C ~ 85°C (TA)	-40°C ~ 85°C (TA)	-40°C ~ 85°C (TA)

## ATSAMD21E18A-AUT Datasheet PDF

Download ATSAMD21E18A-AUT pdf datasheets and Microchip Technology documentation for ATSAMD21E18A-AUT - Microchip Technology.

### Datasheets


[SAM D21/DA1 Family Datasheet.pdf](#)

### PCN Packaging

[Transfer to Microchip/Label/Pkg 5/Sep/2016.pdf](#)


[Boxes 07/Dec/2016.pdf](#)

## PCN Design/Specification

 SAM D21/DA1 05/Apr/2021.pdf

 SAM D21/DA1 10/Sep/2021.pdf

## PCN Assembly/Origin

 Assembly 14/Sep/2020.pdf

## Customers Also Interested in

### Recommended Products



**ATSAMD21G16B-MU**  
Microchip Technology  
IC MCU 32BIT 64KB FLASH 48QFN



**ATSAMD21E18A-AU**  
Microchip Technology  
IC MCU 32BIT 256KB FLASH 32TQFP



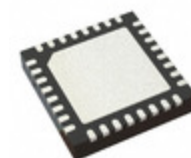
**ATSAMD21G16B-MZ**  
Micrel / Microchip Technology



**ATSAMD21E18A-AU**  
Atmel  
IC MCU 32BIT 256KB FLASH 32TQFP



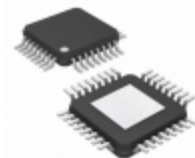
**ATSAMD21E17D-MUT**  
Microchip Technology  
IC MCU 32BIT 128KB FLASH 32QFN



**ATSAMD21E18A-MUT**  
Microchip Technology  
IC MCU 32BIT 256KB FLASH 32QFN



**ATSAMD21E18A-AF**  
Microchip Technology  
IC MCU 32BIT 256KB FLASH 32TQFP



**ATSAMD21E18A-AFT**  
Microchip Technology  
IC MCU 32BIT 256KB FLASH 32TQFP



**ATSAMD21E18A-MU**  
Microchip Technology  
IC MCU 32BIT 256KB FLASH 32QFN



**ATSAMD21E18A-AF**  
Atmel  
IC MCU 32BIT 256KB FLASH 32TQFP



**ATSAMD21G16A-AU**  
Micrel / Microchip Technology  
IC MCU 32BIT 64KB FLASH 48TQFP



**ATSAMD21G16B-AFT**  
Microchip Technology  
IC MCU 32BIT 64KB FLASH 48TQFP



**ATSAMD21G15B-AU**  
Microchip Technology  
IC MCU 32BIT 32KB FLASH 48TQFP



**ATSAMD21E17D-AU**  
Microchip Technology  
IC MCU 32BIT 128KB FLASH 32TQFP



**ATSAMD21E17L-MF**  
Microchip Technology  
IC MCU 32BIT 128KB FLASH 32QFN



**ATSAMD21E17A-MUT**  
Microchip Technology  
IC MCU 32BIT 128KB FLASH 32QFN



**ATSAMD21G16L-MN**  
Atmel (Microchip Technology)



**ATSAMD21G16B-AU**  
Microchip Technology  
IC MCU 32BIT 64KB FLASH 48TQFP

## Shipment

### Delivery Time

In-stock items can be shipped within 24 hours. Some parts will be arranged for delivery within 1-2 days from the date all items arrive at our warehouse. And Allelco ships order once a day at about 17:00, except Sunday. Once the goods are shipped, the estimated delivery time depends on the shipping methods and Delivery destination. The table below shows are the logistic time for some common countries.

### Delivery Cost

- > Use your express account for shipment if you have one.
  - > Use our account for the shipment. Refer to the table below for the approximate charges.
- (Different time frame / countries / package size has different price.)

### Delivery Method

- > Global Common Shipment by DHL / UPS / FedEx / TNT / EMS / SF we support.
- > Others more shipping ways, please get in touch with your customer manager.

Common Countries Logistic Time Reference

Region	Country	Logistic Time(Day)
America	United States	5
	Brazil	7
Europe	Germany	5
	United Kingdom	4
	Italy	5
Oceania	Australia	6
	New Zealand	7
Asia	India	6
	Japan	7
Middle East	Israel	6

DHL & FedEx Shipment Charges Reference

Shipment charges(KG)	Reference DHL(USD\$)
0.00kg-1.00kg	USD\$60.00
1.00kg-2.00kg	USD\$70.00
2.00kg-3.00kg	USD\$80.00

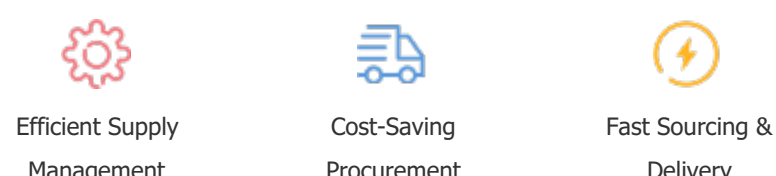
Note: The above table is for reference only. There may have some data bias for the uncontrollable factors. Contact us if you have any questions.

### Payment Support

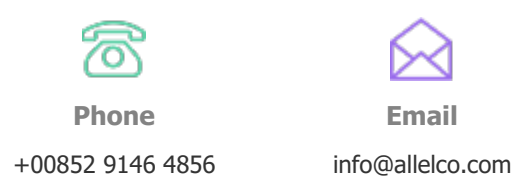
The payment method can be chosen from the methods shown below:  
Wire Transfer (T/T, Bank Transfer), Western Union, Credit card, PayPal.



### Your Faithful Supply Chain Partner -



Contact us if you have any questions.



### Certifications & Memberships



View More

