



Image may be representation.  
See specifications for product details.



## STPS2L25U

|                          |                                  |
|--------------------------|----------------------------------|
| Manufacturer Part Number | <b>STPS2L25U</b>                 |
| Manufacturer             | <b>STMicroelectronics</b>        |
| Allelco Part Number      | 32D-STPS2L25U                    |
| ECAD Model               | PCB Symbol, Footprint & 3D Model |
| Parts Description        | DIODE SCHOTTKY 25V 2A SMB        |
| Package                  | DO-214AA, SMB                    |
| Data sheet               | <b>STPS2L25.pdf</b>              |
| RoHs Status              | <b>ROHS3 Compliant</b>           |

**Get a Quote**

STPS2L25U - STMicroelectronics.New Original in Stock. Download Linear Technology STPS2L25U datasheet/specifications on AllelcoElec.com.  
Request a quote for STPS2L25U, please send us email: [info@allelco.com](mailto:info@allelco.com)

### Specifications

STPS2L25U Tech Specifications  
STPS2L25U - STMicroelectronics technical specifications, attributes, parameters

| Product Attribute                 | Attribute Value                      | Product Attribute                | Attribute Value  |
|-----------------------------------|--------------------------------------|----------------------------------|------------------|
| Manufacturer                      | STMicroelectronics                   | Package                          | Tape & Reel (TR) |
| Voltage - Forward (Vf) (Max) @ If | 450 mV @ 2 A                         | Operating Temperature - Junction | 150°C (Max)      |
| Voltage - DC Reverse (Vr) (Max)   | 25 V                                 | Mounting Type                    | Surface Mount    |
| Technology                        | Schottky                             | Current - Reverse Leakage @ Vr   | 90 µA @ 25 V     |
| Supplier Device Package           | SMB                                  | Current - Average Rectified (Io) | 2A               |
| Speed                             | Fast Recovery =< 500ns, > 200mA (Io) | Capacitance @ Vr, F              | -                |
| Series                            | -                                    | Base Product Number              | STPS2L25         |
| Package / Case                    | DO-214AA, SMB                        |                                  |                  |

### Parts with Similar Specifications

The three parts on the right have similar specifications to STMicroelectronics STPS2L25U

| Product Attribute                 |                                      |                                      |                                      |                                      |
|-----------------------------------|--------------------------------------|--------------------------------------|--------------------------------------|--------------------------------------|
| Part Number                       | STPS2L25U                            | STPS2L40AF                           | STPS2L40UF                           | STPS2L30AF                           |
| Manufacturer                      | STMicroelectronics                   | STMicroelectronics                   | STMicroelectronics                   | STMicroelectronics                   |
| Technology                        | Schottky                             | Schottky                             | Schottky                             | Schottky                             |
| Capacitance @ Vr, F               | -                                    | -                                    | -                                    | -                                    |
| Package / Case                    | DO-214AA, SMB                        | DO-221AC, SMA Flat Leads             | DO-221AA, SMB Flat Leads             | DO-214AC, SMA                        |
| Speed                             | Fast Recovery =< 500ns, > 200mA (Io) | Fast Recovery =< 500ns, > 200mA (Io) | Fast Recovery =< 500ns, > 200mA (Io) | Fast Recovery =< 500ns, > 200mA (Io) |
| Voltage - DC Reverse (Vr) (Max)   | 25 V                                 | 40 V                                 | 40 V                                 | 30 V                                 |
| Current - Average Rectified (Io)  | 2A                                   | 2A                                   | 2A                                   | 2A                                   |
| Base Product Number               | STPS2L25                             | STPS2                                | STPS2L40                             | STPS2L30                             |
| Voltage - Forward (Vf) (Max) @ If | 450 mV @ 2 A                         | 430 mV @ 2 A                         | 430 mV @ 2 A                         | 450 mV @ 2 A                         |
| Current - Reverse Leakage @ Vr    | 90 µA @ 25 V                         | 220 µA @ 40 V                        | 220 µA @ 40 V                        | 200 µA @ 30 V                        |
| Package                           | Tape & Reel (TR)                     | Tape & Reel (TR)                     | Tape & Reel (TR)                     | Tape & Reel (TR)                     |
| Supplier Device Package           | SMB                                  | SMAflat                              | SMBflat                              | SMA                                  |
| Operating Temperature - Junction  | 150°C (Max)                          | 150°C (Max)                          | 150°C (Max)                          | 150°C (Max)                          |
| Series                            | -                                    | -                                    | -                                    | -                                    |
| Mounting Type                     | Surface Mount                        | Surface Mount                        | Surface Mount                        | Surface Mount                        |

### STPS2L25U Datasheet PDF

Download STPS2L25U pdf datasheets and STMicroelectronics documentation for STPS2L25U - STMicroelectronics.

#### Datasheets

[STPS2L25.pdf](#)

#### PCN Packaging

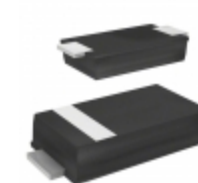
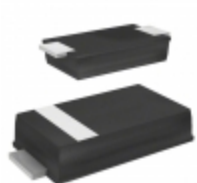
[Box Label Chg 28/Jul/2016.pdf](#)

#### PCN Assembly/Origin

[Assembly 17/Sep/2020.pdf](#)

### Customers Also Interested in

#### Recommended Products



|   |   |   |  |   |   |
|---|---|---|--|---|---|
| <b>STPS2L40AF</b><br>STMicroelectronics<br>DIODE SCHOTTKY 40V 2A SMAFLAT          | <b>STPS2L40UF</b><br>STMicroelectronics<br>DIODE SCHOTTKY 40V 2A SMBFLAT          | <b>STPS2H100U-TR</b><br>STMicroelectronics  | <b>STPS2L30AF</b><br>STMicroelectronics<br>DIODE SCHOTTKY 30V 2A SMA               | <b>STPS2H100UF</b><br>STMicroelectronics<br>DIODE SCHOTTKY 100V 2A SMBFLAT          | <b>STPS2H100AF</b><br>STMicroelectronics<br>DIODE SCHOTTKY 100V 2A SMAFLAT          |
|  |  |  |  |  |  |
| <b>STPS2H100AY</b><br>STMicroelectronics<br>DIODE SCHOTTKY 100V 2A SMA            | <b>STPS2H100AFN</b><br>STMicroelectronics<br>DIODE SCHOTTKY 100V 2A SMAFLAT       | <b>STPS2H100U</b><br>STMicroelectronics<br>DIODE SCHOTTKY 100V 2A SMB             | <b>STPS2L40U</b><br>STMicroelectronics<br>DIODE SCHOTTKY 40V 2A SMB                | <b>STPS2L30U</b><br>STMicroelectronics  | <b>STPS2H100AFY</b><br>STMicroelectronics<br>DIODE SCHOTT 100V 2A SOD128FLAT        |
|  |  |  |  |  |  |
| <b>STPS2L30A</b><br>STMicroelectronics<br>DIODE SCHOTTKY 30V 2A SMA               | <b>STPS2L30UF</b><br>STMicroelectronics<br>DIODE SCHOTTKY 30V 2A SMBFLAT          | <b>STPS2L60RL</b><br>STMicroelectronics<br>DIODE SCHOTTKY 60V 2A DO41             | <b>STPS2H100ZF</b><br>STMicroelectronics<br>DIODE SCHOTTKY 100V 2A SOD123F         | <b>STPS2L60A</b><br>STMicroelectronics<br>DIODE SCHOTTKY 60V 2A SMA                 | <b>STPS2H100UY</b><br>STMicroelectronics<br>DIODE SCHOTTKY 100V 2A SMB              |

## Shipment

### Delivery Time

In-stock items can be shipped within 24 hours. Some parts will be arranged for delivery within 1-2 days from the date all items arrive at our warehouse. And Allelco ships order once a day at about 17:00, except Sunday. Once the goods are shipped, the estimated delivery time depends on the shipping methods and Delivery destination. The table below shows are the logistic time for some common countries.

### Delivery Cost

> Use your express account for shipment if you have one.

> Use our account for the shipment. Refer to the table below for the approximate charges.

(Different time frame / countries / package size has different price.)

### Delivery Method

> Global Common Shipment by DHL / UPS / FedEx / TNT / EMS / SF we support.

> Others more shipping ways, please get in touch with your customer manager.

| Common Countries Logistic Time Reference |                |                    |
|--|----------------|--------------------|
| Region                                   | Country        | Logistic Time(Day) |
| America                                  | United States  | 5                  |
|  | Brazil         | 7                  |
| Europe                                   | Germany        | 5                  |
|  | United Kingdom | 4                  |
|  | Italy          | 5                  |
| Oceania                                  | Australia      | 6                  |
|  | New Zealand    | 7                  |
| Asia                                     | India          | 6                  |
|  | Japan          | 7                  |
| Middle East                              | Israel         | 6                  |

| DHL & FedEx Shipment Charges Reference |                      |
|--|----------------------|
| Shipment charges(KG)                   | Reference DHL(USD\$) |
| 0.00kg-1.00kg                          | USD\$60.00           |
| 1.00kg-2.00kg                          | USD\$70.00           |
| 2.00kg-3.00kg                          | USD\$80.00           |

Note: The above table is for reference only. There may have some data bias for the uncontrollable factors.

Contact us if you have any questions.

## Payment Support

The payment method can be chosen from the methods shown below:

Wire Transfer (T/T, Bank Transfer), Western Union, Credit card, PayPal.



## Your Faithful Supply Chain Partner -



Efficient Supply Management



Cost-Saving Procurement



Fast Sourcing & Delivery

Contact us if you have any questions.



Phone  
+00852 9146 4856



Email  
info@allelco.com

## Certifications & Memberships



[View More](#)