



Image may be representation.
See specifications for product details.



XC2VP30-6FF1152I

Manufacturer Part Number	XC2VP30-6FF1152I
Manufacturer	AMD Xilinx
Allelco Part Number	32D-XC2VP30-6FF1152I
ECAD Model	Request Free CAD Models
Parts Description	IC FPGA 644 I/O 1152FCBGA
Package	1152-BBGA, FCBGA
Data sheet	Virtex-II Pro, Pro X.pdf

Get a Quote

XC2VP30-6FF1152I - AMD.New Original in Stock. Download Linear Technology XC2VP30-6FF1152I datasheet/specifications on AllelcoElec.com.
Request a quote for XC2VP30-6FF1152I, please send us email: info@allelco.com

Specifications

XC2VP30-6FF1152I Tech Specifications
XC2VP30-6FF1152I - AMD technical specifications, attributes, parameters

Product Attribute	Attribute Value	Product Attribute	Attribute Value
Manufacturer	AMD Xilinx	Operating Temperature	-40°C ~ 100°C (TJ)
Voltage - Supply	1.425V ~ 1.575V	Number of Logic Elements/Cells	30816
Total RAM Bits	2506752	Number of LABs/CLBs	3424
Supplier Device Package	1152-FCBGA (35x35)	Number of I/O	644
Series	Virtex®-II Pro	Mounting Type	Surface Mount
Package / Case	1152-BBGA, FCBGA	Base Product Number	XC2VP30
Package	Tray		

Parts with Similar Specifications

The three parts on the right have similar specifications to AMD XC2VP30-6FF1152I

Product Attribute				
Part Number	XC2VP30-6FF1152I	XC2VP30-6FFG896C	XC2VP30-6FFG896I	XC2VP30-6FF896I
Manufacturer	AMD	AMD	AMD	AMD
Number of LABs/CLBs	3424	3424	3424	3424
Supplier Device Package	1152-FCBGA (35x35)	896-FCBGA (31x31)	896-FCBGA (31x31)	896-FCBGA (31x31)
Total RAM Bits	2506752	2506752	2506752	2506752
Package	Tray	Tray	Tray	Tray
Package / Case	1152-BBGA, FCBGA	896-BBGA, FCBGA	896-BBGA, FCBGA	896-BBGA, FCBGA
Number of Logic Elements/Cells	30816	30816	30816	30816
Base Product Number	XC2VP30	XC2VP30	XC2VP30	XC2VP30
Voltage - Supply	1.425V ~ 1.575V	1.425V ~ 1.575V	1.425V ~ 1.575V	1.425V ~ 1.575V
Mounting Type	Surface Mount	Surface Mount	Surface Mount	Surface Mount
Series	Virtex®-II Pro	Virtex®-II Pro	Virtex®-II Pro	Virtex®-II Pro
Number of I/O	644	556	556	556
Operating Temperature	-40°C ~ 100°C (TJ)	0°C ~ 85°C (TJ)	-40°C ~ 100°C (TJ)	-40°C ~ 100°C (TJ)

XC2VP30-6FF1152I Datasheet PDF

Download XC2VP30-6FF1152I pdf datasheets and AMD documentation for XC2VP30-6FF1152I - AMD.

Datasheets

[Virtex-II Pro, Pro X.pdf](#)

Environmental Information

[Xilinx REACH211 Cert.pdf](#)

PCN Obsolescence/ EOL

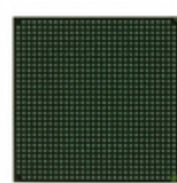
[Mult Dev EOL 6/Jan/2020.pdf](#)

Customers Also Interested in

Recommended Products



XC2VP30-6FFG896C
AMD
IC FPGA 556 I/O 896FCBGA



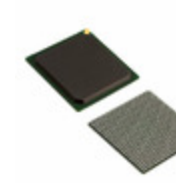
XC2VP30-6FFG896I
AMD
IC FPGA 556 I/O 896FCBGA



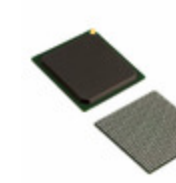
XC2VP30-6FF896I
AMD
IC FPGA 556 I/O 896FCBGA



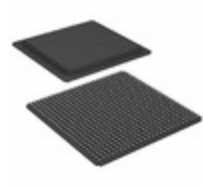
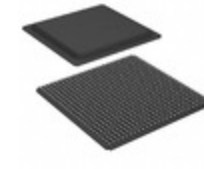
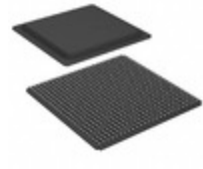
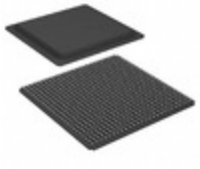
XC2VP30-5FF896C
AMD
IC FPGA 556 I/O 896FCBGA



XC2VP30-5FGG676I
AMD
IC FPGA 416 I/O 676FBGA



XC2VP30-6FGG676C
AMD
IC FPGA 416 I/O 676FBGA

**XC2VP30-5FFG896C**AMD
IC FPGA 556 I/O 896FCBGA**XC2VP30-5FG676I**AMD
IC FPGA 416 I/O 676FCBGA**XC2VP30-6FFG1152I**AMD
IC FPGA 644 I/O 1152FCBGA**XC2VP30-6FF896C**AMD
IC FPGA 556 I/O 896FCBGA**XC2VP30-7FFG896C**AMD
IC FPGA 556 I/O 896FCBGA**XC2VP30-5FFG1152I**AMD
IC FPGA 644 I/O 1152FCBGA**XC2VP30-5FG676C**AMD
IC FPGA 416 I/O 676FCBGA**XC2VP30-6FG676I**AMD
IC FPGA 416 I/O 676FCBGA**XC2VP30-5FF1152I**AMD
IC FPGA 644 I/O 1152FCBGA**XC2VP30-5FF896I**AMD
IC FPGA 556 I/O 896FCBGA**XC2VP30-6FG676C**AMD
IC FPGA 416 I/O 676FCBGA**XC2VP30-5FFG896I**Xilinx
IC FPGA 556 I/O 896FCBGA

Shipment

Delivery Time

In-stock items can be shipped within 24 hours. Some parts will be arranged for delivery within 1-2 days from the date all items arrive at our warehouse. And Allelco ships order once a day at about 17:00, except Sunday. Once the goods are shipped, the estimated delivery time depends on the shipping methods and Delivery destination. The table below shows are the logistic time for some common countries.

Delivery Cost

> Use your express account for shipment if you have one.

> Use our account for the shipment. Refer to the table below for the approximate charges.

(Different time frame / countries / package size has different price.)

Delivery Method

> Global Common Shipment by DHL / UPS / FedEx / TNT / EMS / SF we support.

> Others more shipping ways, please get in touch with your customer manager.

Common Countries Logistic Time Reference		
Region	Country	Logistic Time(Day)
America	United States	5
	Brazil	7
Europe	Germany	5
	United Kingdom	4
	Italy	5
Oceania	Australia	6
	New Zealand	7
Asia	India	6
	Japan	7
Middle East	Israel	6

DHL & FedEx Shipment Charges Reference	
Shipment charges(KG)	Reference DHL(USD\$)
0.00kg-1.00kg	USD\$60.00
1.00kg-2.00kg	USD\$70.00
2.00kg-3.00kg	USD\$80.00

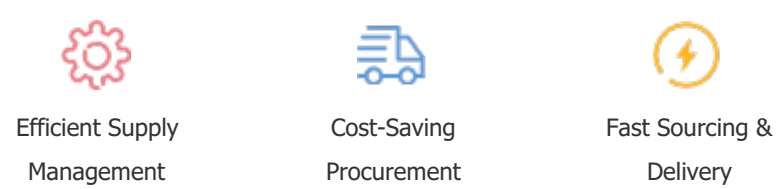
Note: The above table is for reference only. There may have some data bias for the uncontrollable factors.
Contact us if you have any questions.

Payment Support

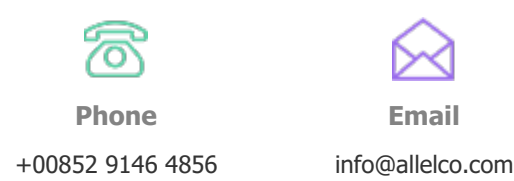
The payment method can be chosen from the methods shown below:
Wire Transfer (T/T, Bank Transfer), Western Union, Credit card, PayPal.



Your Faithful Supply Chain Partner -



Contact us if you have any questions.



Certifications & Memberships



[View More](#)



Contact us

Address: Flat/Rm C 13/F Harvard Commercial Building 105-111 Thomson Road, Wan Chai, Hong Kong

Phone: +00852 9146 4856

Fax: +00852 3010 8510

Email: info@Allelco.com

Copyright © 2012-2023 AllelcoElec.com. All rights reserved.