



Image may be representation.
See specifications for product details.



STB10N95K5

Manufacturer Part Number	STB10N95K5
Manufacturer	STMicroelectronics
Allelco Part Number	32D-STB10N95K5
ECAD Model	PCB Footprint and Symbol
Parts Description	MOSFET N-CH 950V 8A D2PAK
Package	TO-263-3, D ² Pak (2 Leads + Tab), TO-263AB
Data sheet	ST(B,F,P,W)10N95K5.pdf
RoHs Status	ROHS3 Compliant

Get a Quote

STB10N95K5 - STMicroelectronics.New Original in Stock. Download Linear Technology STB10N95K5 datasheet/specifications on AllelcoElec.com.
Request a quote for STB10N95K5, please send us email: info@allelco.com

Specifications

STB10N95K5 Tech Specifications
STB10N95K5 - STMicroelectronics technical specifications, attributes, parameters

Product Attribute	Attribute Value	Product Attribute	Attribute Value
Manufacturer	STMicroelectronics	Operating Temperature	-55°C ~ 150°C (TJ)
Vgs(th) (Max) @ Id	5V @ 100µA	Mounting Type	Surface Mount
Vgs (Max)	±30V	Input Capacitance (Ciss) (Max) @ Vds	630 pF @ 100 V
Technology	MOSFET (Metal Oxide)	Gate Charge (Qg) (Max) @ Vgs	22 nC @ 10 V
Supplier Device Package	D ² PAK (TO-263)	FET Type	N-Channel
Series	SuperMESH5™	FET Feature	-
Rds On (Max) @ Id, Vgs	800mOhm @ 4A, 10V	Drive Voltage (Max Rds On, Min Rds On)	10V
Power Dissipation (Max)	130W (Tc)	Drain to Source Voltage (Vdss)	950 V
Package / Case	TO-263-3, D ² Pak (2 Leads + Tab), TO-263AB	Current - Continuous Drain (Id) @ 25°C	8A (Tc)
Package	Tape & Reel (TR)	Base Product Number	STB10

Parts with Similar Specifications

The three parts on the right have similar specifications to STMicroelectronics STB10N95K5

Product Attribute				
Part Number	STB10N95K5	STB10N60M2	STB100NF04T4	STB10NK60Z-1
Manufacturer	STMicroelectronics	STMicroelectronics	STMicroelectronics	STMicroelectronics
Current - Continuous Drain (Id) @ 25°C	8A (Tc)	7.5A (Tc)	120A (Tc)	10A (Tc)
Gate Charge (Qg) (Max) @ Vgs	22 nC @ 10 V	13.5 nC @ 10 V	150 nC @ 10 V	70 nC @ 10 V
Base Product Number	STB10	STB10	STB100	STB10N
Drain to Source Voltage (Vdss)	950 V	600 V	40 V	600 V
FET Type	N-Channel	N-Channel	N-Channel	N-Channel
FET Feature	-	-	-	-
Power Dissipation (Max)	130W (Tc)	85W (Tc)	300W (Tc)	115W (Tc)
Vgs(th) (Max) @ Id	5V @ 100µA	4V @ 250µA	4V @ 250µA	4.5V @ 250µA
Series	SuperMESH5™	MDmesh™ II Plus	Automotive, AEC-Q101, STripFET™ II	SuperMESH™
Supplier Device Package	D ² PAK (TO-263)	D ² PAK (TO-263)	D2PAK	I2PAK
Vgs (Max)	±30V	±25V	±20V	±30V
Rds On (Max) @ Id, Vgs	800mOhm @ 4A, 10V	600mOhm @ 3A, 10V	4.6mOhm @ 50A, 10V	750mOhm @ 4.5A, 10V
Mounting Type	Surface Mount	Surface Mount	Surface Mount	Through Hole
Package	Tape & Reel (TR)	Tape & Reel (TR)	Tape & Reel (TR)	Tube
Operating Temperature	-55°C ~ 150°C (TJ)	-55°C ~ 150°C (TJ)	-55°C ~ 175°C (TJ)	-55°C ~ 150°C (TJ)
Drive Voltage (Max Rds On, Min Rds On)	10V	10V	10V	10V
Package / Case	TO-263-3, D ² Pak (2 Leads + Tab), TO-263AB	TO-263-3, D ² Pak (2 Leads + Tab), TO-263AB	TO-263-3, D ² Pak (2 Leads + Tab), TO-263AB	TO-262-3 Long Leads, I ² Pak, TO-262AA
Technology	MOSFET (Metal Oxide)	MOSFET (Metal Oxide)	MOSFET (Metal Oxide)	MOSFET (Metal Oxide)
Input Capacitance (Ciss) (Max) @ Vds	630 pF @ 100 V	400 pF @ 100 V	5100 pF @ 25 V	1370 pF @ 25 V

STB10N95K5 Datasheet PDF

Download STB10N95K5 pdf datasheets and STMicroelectronics documentation for STB10N95K5 - STMicroelectronics.

Datasheets

[ST\(B,F,P,W\)10N95K5.pdf](#)

PCN Packaging

[Mult Dev Inner Box Chg 9/Dec/2021.pdf](#)

PCN Assembly/Origin

Customers Also Interested in

Recommended Products

 life.augmented	 life.augmented			 life.augmented	 life.augmented
STB10NB50T4 STMicroelectronics	STB10N60M2 10N60M2 STMicroelectronics	STB10N60M2 STMicroelectronics MOSFET N-CH 600V 7.5A D2PAK	STB100NF04T4 STMicroelectronics MOSFET N-CH 40V 120A D2PAK	STB10NB50T4 MOS STMicroelectronics	STB10NB20 STMicroelectronics
 life.augmented		 life.augmented		 life.augmented	
STB10NK60Z STMicroelectronics	STB10NK60Z-1 STMicroelectronics MOSFET N-CH 600V 10A I2PAK	STB10NK60Z-1-H STMicroelectronics	STB10N65K3 STMicroelectronics MOSFET N-CH 650V 10A D2PAK	STB10NB20T4 STMicroelectronics	STB100NH02LT4 STMicroelectronics MOSFET N-CH 24V 60A D2PAK
 life.augmented		 life.augmented		NO PICTURE	 life.augmented
STB100NH02LT4 MOS STMicroelectronics	STB10LN80K5 STMicroelectronics MOSFET N-CHANNEL 800V 8A D2PAK	STB10N65K3 10N65K3 STMicroelectronics	STB10NK60ZT4 STMicroelectronics MOSFET N-CH 600V 10A D2PAK	STB1080PI AUK	STB100NF04L-1 STMicroelectronics

Shipment

Delivery Time

In-stock items can be shipped within 24 hours. Some parts will be arranged for delivery within 1-2 days from the date all items arrive at our warehouse. And Allelco ships order once a day at about 17:00, except Sunday. Once the goods are shipped, the estimated delivery time depends on the shipping methods and Delivery destination. The table below shows are the logistic time for some common countries.

Delivery Cost

- > Use your express account for shipment if you have one.
 - > Use our account for the shipment. Refer to the table below for the approximate charges.
- (Different time frame / countries / package size has different price.)

Delivery Method

- > Global Common Shipment by DHL / UPS / FedEx / TNT / EMS / SF we support.
- > Others more shipping ways, please get in touch with your customer manager.

Common Countries Logistic Time Reference		
Region	Country	Logistic Time(Day)
America	United States	5
	Brazil	7
Europe	Germany	5
	United Kingdom	4
	Italy	5
Oceania	Australia	6
	New Zealand	7
Asia	India	6
	Japan	7
Middle East	Israel	6

DHL & FedEx Shipment Charges Reference	
Shipment charges(KG)	Reference DHL(USD\$)
0.00kg-1.00kg	USD\$60.00
1.00kg-2.00kg	USD\$70.00
2.00kg-3.00kg	USD\$80.00

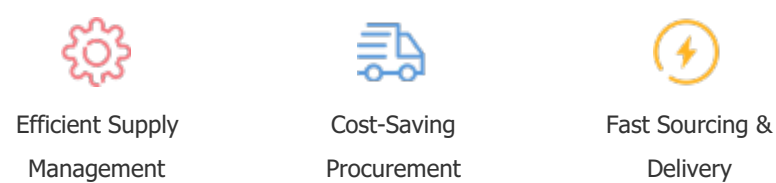
Note: The above table is for reference only. There may have some data bias for the uncontrollable factors.
Contact us if you have any questions.

Payment Support

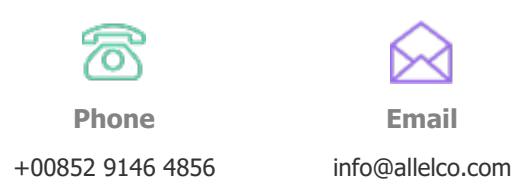
The payment method can be chosen from the methods shown below:
Wire Transfer (T/T, Bank Transfer), Western Union, Credit card, PayPal.



Your Faithful Supply Chain Partner -



Contact us if you have any questions.



Certifications & Memberships



[View More](#)