

Image may be representation.  
See specifications for product details.

## XCZU47DR-2FFVG1517I

Manufacturer Part Number	<b>XCZU47DR-2FFVG1517I</b>
Manufacturer	<b>AMD Xilinx</b>
Allelco Part Number	32D-XCZU47DR-2FFVG1517I
ECAD Model	Request Free CAD Models
Parts Description	IC ZUP RFSOC A53 FPGA 1517BGA
Package	1517-BBGA, FCBGA
Data sheet	XCZU47DR-2FFVG1517I.pdf
RoHs Status	<b>ROHS3 Compliant</b>

**Get a Quote**



XCZU47DR-2FFVG1517I - AMD.New Original in Stock. Download Linear Technology XCZU47DR-2FFVG1517I datasheet/specifications on AllelcoElec.com.  
Request a quote for XCZU47DR-2FFVG1517I, please send us email: [info@allelco.com](mailto:info@allelco.com)

### Specifications

XCZU47DR-2FFVG1517I Tech Specifications

XCZU47DR-2FFVG1517I - AMD technical specifications, attributes, parameters

Product Attribute	Attribute Value	Product Attribute	Attribute Value
Manufacturer	AMD Xilinx	Package	Tray
Supplier Device Package	1517-FCBGA (40x40)	Operating Temperature	-40°C ~ 100°C (TJ)
Speed	533MHz, 1.333GHz	Number of I/O	561
Series	Zynq® UltraScale+™ RFSoc	Flash Size	-
RAM Size	256KB	Core Processor	Quad ARM® Cortex®-A53 MPCore™ with CoreSight™, Dual ARM®Cortex™-R5 with CoreSight™
Primary Attributes	Zynq®UltraScale+™ FPGA, 930K+ Logic Cells	Connectivity	CANbus, EBI/EMI, Ethernet, I²C, MMC/SD/SDIO, SPI, UART/USART, USB OTG
Peripherals	DMA, WDT	Architecture	MCU, FPGA
Package / Case	1517-BBGA, FCBGA		

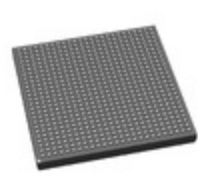
### Parts with Similar Specifications

The three parts on the right have similar specifications to AMD XCZU47DR-2FFVG1517I

Product Attribute				
Part Number	XCZU47DR-2FFVG1517I	XCZU3EG-1SFVA625I	XCZU4EG-1FBVB900E	XCZU3CG-1SFVA625E
Manufacturer	AMD	AMD	AMD	AMD
Architecture	MCU, FPGA	MCU, FPGA	MCU, FPGA	MCU, FPGA
Connectivity	CANbus, EBI/EMI, Ethernet, I²C, MMC/SD/SDIO, SPI, UART/USART, USB OTG	CANbus, EBI/EMI, Ethernet, I²C, MMC/SD/SDIO, SPI, UART/USART, USB OTG	CANbus, EBI/EMI, Ethernet, I²C, MMC/SD/SDIO, SPI, UART/USART, USB OTG	CANbus, EBI/EMI, Ethernet, I²C, MMC/SD/SDIO, SPI, UART/USART, USB OTG
RAM Size	256KB	256KB	256KB	256KB
Number of I/O	561	180	204	180
Core Processor	Quad ARM® Cortex®-A53 MPCore™ with CoreSight™, Dual ARM®Cortex™-R5 with CoreSight™	Quad ARM® Cortex®-A53 MPCore™ with CoreSight™, Dual ARM®Cortex™-R5 with CoreSight™, ARM Mali™-400 MP2	Quad ARM® Cortex®-A53 MPCore™ with CoreSight™, Dual ARM®Cortex™-R5 with CoreSight™, ARM Mali™-400 MP2	Dual ARM® Cortex®-A53 MPCore™ with CoreSight™, Dual ARM®Cortex™-R5 with CoreSight™
Speed	533MHz, 1.333GHz	500MHz, 600MHz, 1.2GHz	500MHz, 600MHz, 1.2GHz	500MHz, 1.2GHz
Package	Tray	Tray	Tray	Bulk
Operating Temperature	-40°C ~ 100°C (TJ)	-40°C ~ 100°C (TJ)	0°C ~ 100°C (TJ)	0°C ~ 100°C (TJ)
Flash Size	-	-	-	-
Primary Attributes	Zynq®UltraScale+™ FPGA, 930K+ Logic Cells	Zynq®UltraScale+™ FPGA, 154K+ Logic Cells	Zynq®UltraScale+™ FPGA, 192K+ Logic Cells	Zynq®UltraScale+™ FPGA, 154K+ Logic Cells
Package / Case	1517-BBGA, FCBGA	625-BFBGA, FCBGA	900-BBGA, FCBGA	625-BFBGA, FCBGA
Peripherals	DMA, WDT	DMA, WDT	DMA, WDT	DMA, WDT
Series	Zynq® UltraScale+™ RFSoc	Zynq® UltraScale+™ MPSoC EG	Zynq® UltraScale+™ MPSoC EG	Zynq® UltraScale+™ MPSoC CG
Supplier Device Package	1517-FCBGA (40x40)	625-FCBGA (21x21)	900-FCBGA (31x31)	625-FCBGA (21x21)

### Customers Also Interested in

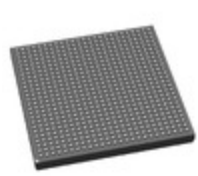
#### Recommended Products



**XCZU3EG-1SFVA625I**  
AMD  
IC SOC CORTEX-A53 625FCBGA



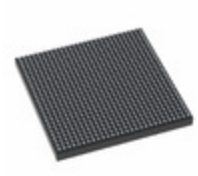
**XCZU4EG-1FBVB900E**  
AMD  
IC SOC CORTEX-A53 900FCBGA



**XCZU3CG-1SFVA625E**  
AMD  
IC SOC CORTEX-A53 625FCBGA



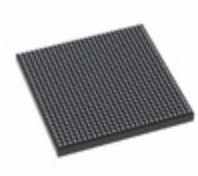
**XCZU4CG-2FBVB900E**  
AMD  
IC SOC CORTEX-A53 900FCBGA



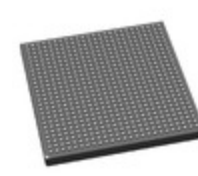
**XCZU4CG-1SFVC784I**  
AMD  
IC SOC CORTEX-A53 784FCBGA



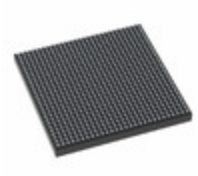
**XCZU4CG-2FBVB900I**  
AMD  
IC SOC CORTEX-A53 900FCBGA



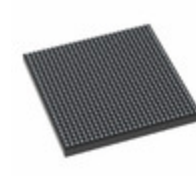
**XCZU4CG-1SFVC784E**  
AMD  
IC SOC CORTEX-A53 784FCBGA



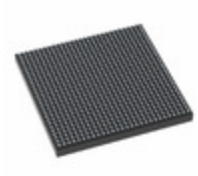
**XCZU3EG-2SFVA625E**  
AMD  
IC SOC CORTEX-A53 625FCBGA



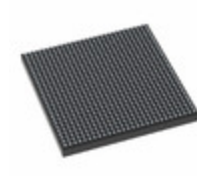
**XCZU4CG-2SFVC784I**  
AMD  
IC SOC CORTEX-A53 784FCBGA



**XCZU4CG-2SFVC784E**  
AMD  
IC SOC CORTEX-A53 784FCBGA



**XCZU3EG-2SFVC784E**  
AMD  
IC SOC CORTEX-A53 784FCBGA

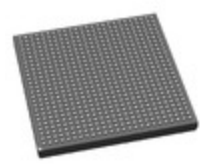


**XCZU3CG-1SFVC784E**  
AMD  
IC SOC CORTEX-A53 784FCBGA



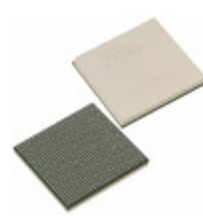
**XCZU4CG-1FBVB900I**

AMD  
IC SOC CORTEX-A53 900FCBGA



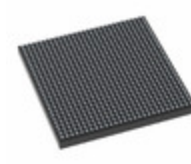
**XCZU3EG-2SFVA625I**

AMD  
IC SOC CORTEX-A53 625FCBGA



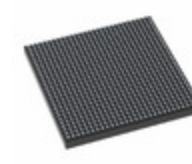
**XCZU4CG-1FBVB900E**

AMD  
IC SOC CORTEX-A53 900FCBGA



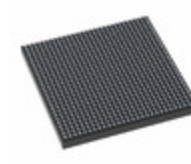
**XCZU3CG-2SFVC784E**

AMD  
IC SOC CORTEX-A53 784FCBGA



**XCZU3EG-1SFVC784E**

AMD  
IC SOC CORTEX-A53 784FCBGA



**XCZU3EG-2SFVC784I**

AMD  
IC SOC CORTEX-A53 784FCBGA

## Shipment

### Delivery Time

In-stock items can be shipped within 24 hours. Some parts will be arranged for delivery within 1-2 days from the date all items arrive at our warehouse. And Allelco ships order once a day at about 17:00, except Sunday. Once the goods are shipped, the estimated delivery time depends on the shipping methods and Delivery destination. The table below shows are the logistic time for some common countries.

### Delivery Cost

> Use your express account for shipment if you have one.

> Use our account for the shipment. Refer to the table below for the approximate charges.

(Different time frame / countries / package size has different price.)

### Delivery Method

> Global Common Shipment by DHL / UPS / FedEx / TNT / EMS / SF we support.

> Others more shipping ways, please get in touch with your customer manager.

Common Countries Logistic Time Reference

Region	Country	Logistic Time(Day)
America	United States	5
	Brazil	7
Europe	Germany	5
	United Kingdom	4
	Italy	5
Oceania	Australia	6
	New Zealand	7
Asia	India	6
	Japan	7
Middle East	Israel	6

DHL & FedEx Shipment Charges Reference

Shipment charges(KG)	Reference DHL(USD\$)
0.00kg-1.00kg	USD\$60.00
1.00kg-2.00kg	USD\$70.00
2.00kg-3.00kg	USD\$80.00

Note: The above table is for reference only. There may have some data bias for the uncontrollable factors.  
Contact us if you have any questions.

## Payment Support

The payment method can be chosen from the methods shown below:

Wire Transfer (T/T, Bank Transfer), Western Union, Credit card, PayPal.



## Your Faithful Supply Chain Partner -



Efficient Supply Management



Cost-Saving Procurement



Fast Sourcing & Delivery

Contact us if you have any questions.



Phone

+00852 9146 4856



Email

info@allelco.com

## Certifications & Memberships



[View More](#)



### Contact us

Address: Flat/Rm C 13/F Harvard Commercial Building 105-111 Thomson Road, Wan Chai, Hong Kong

Phone: +00852 9146 4856

Fax: +00852 3010 8510

Email: info@Allelco.com

Copyright © 2012-2023 AllelcoElec.com. All rights reserved.