



Image may be representation.
See specifications for product details.



NLAS4684MR2G

Manufacturer Part Number	NLAS4684MR2G
Manufacturer	onsemi
Allelco Part Number	32D-NLAS4684MR2G
ECAD Model	PCB Symbol, Footprint & 3D Mode
Parts Description	IC SWITCH SPDTX2 800MOHM 10MICRO
Package	10-TFSOP, 10-MSOP (0.118', 3.00mm Width)
Data sheet	Cylindrical Battery Holders.pdf
	NLAS4684.pdf
RoHs Status	ROHS3 Compliant

Get a Quote

NLAS4684MR2G - onsemi.New Original in Stock. Download Linear Technology NLAS4684MR2G datasheet/specifications on AllelcoElec.com.
Request a quote for NLAS4684MR2G, please send us email: info@allelco.com

Specifications

NLAS4684MR2G Tech Specifications

NLAS4684MR2G - onsemi technical specifications, attributes, parameters

Product Attribute	Attribute Value	Product Attribute	Attribute Value
Manufacturer	onsemi	Number of Circuits	2
Voltage - Supply, Single (V+)	1.8V ~ 5.5V	Multiplexer/Demultiplexer Circuit	2:1
Voltage - Supply, Dual (V±)	-	Mounting Type	Surface Mount
Switch Time (Ton, Toff) (Max)	30ns, 30ns	Current - Leakage (IS(off)) (Max)	1µA
Switch Circuit	SPDT	Crosstalk	-83dB @ 100kHz
Supplier Device Package	10-Micro	Charge Injection	15pC
Series	-	Channel-to-Channel Matching (ΔRon)	60mOhm
Package / Case	10-TFSOP, 10-MSOP (0.118', 3.00mm Width)	Channel Capacitance (CS(off), CD(off))	102pF, 104pF
Package	Tape & Reel (TR)	Base Product Number	NLAS4684
Operating Temperature	-55°C ~ 125°C (TA)	-3db Bandwidth	9.5MHz
On-State Resistance (Max)	800mOhm		

Parts with Similar Specifications

The three parts on the right have similar specifications to onsemi NLAS4684MR2G

Product Attribute				
Part Number	NLAS4684MR2G	NLAS4685FCT1G	NLAS4717EPMTR2G	NLAS4783MN1R2G
Manufacturer	onsemi	onsemi	onsemi	onsemi
Series	-	-	-	-
Channel Capacitance (CS(off), CD(off))	102pF, 104pF	208pF, 102pF	15pF	5pF
Crosstalk	-83dB @ 100kHz	-81dB @ 100kHz	-110dB @ 1MHz	-62dB @ 100kHz
Voltage - Supply, Dual (V±)	-	-	-	-
Base Product Number	NLAS4684	NLAS4	NLAS4717	NLAS4783
Channel-to-Channel Matching (ΔRon)	60mOhm	60mOhm	100mOhm	400mOhm (Max)
Current - Leakage (IS(off)) (Max)	1µA	1µA	1nA	500nA
Mounting Type	Surface Mount	Surface Mount	Surface Mount	Surface Mount
Supplier Device Package	10-Micro	10-Microbump	10-WQFN (1.4x1.8)	16-QFN (3x3)
Voltage - Supply, Single (V+)	1.8V ~ 5.5V	1.8V ~ 5.5V	1.8V ~ 5.5V	1.65V ~ 4.5V
Switch Circuit	SPDT	SPDT	SPDT	SPDT
Operating Temperature	-55°C ~ 125°C (TA)	-55°C ~ 125°C (TA)	-40°C ~ 85°C (TA)	-40°C ~ 85°C (TA)
Switch Time (Ton, Toff) (Max)	30ns, 30ns	30ns, 25ns	30ns, 40ns	27ns, 20ns
Charge Injection	15pC	20pC	9pC	50pC
Package	Tape & Reel (TR)	Tape & Reel (TR)	Tape & Reel (TR)	Tape & Reel (TR)
Multiplexer/Demultiplexer Circuit	2:1	2:1	2:1	2:1
On-State Resistance (Max)	800mOhm	800mOhm	3.5Ohm	10hm
-3db Bandwidth	9.5MHz	11.5MHz	90MHz	17MHz
Number of Circuits	2	2	2	3
Package / Case	10-TFSOP, 10-MSOP (0.118', 3.00mm Width)	10-UFBGA, FCBGA	10-WFQFN	16-VFQFN Exposed Pad

NLAS4684MR2G Datasheet PDF

Download NLAS4684MR2G pdf datasheets and onsemi documentation for NLAS4684MR2G - onsemi.

Datasheets

[Cylindrical Battery Holders.pdf](#)

Environmental Information

onsemi RoHS.pdf

Material Declaration NLAS4684MR2G.pdf

PCN Packaging

2.73KHz.pdf

HTML Datasheet

NLAS4684.pdf

Customers Also Interested in

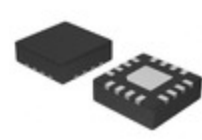
Recommended Products



NLAS4685FCT1G
onsemi
IC SW SPDTX2 800MOHM
10MICROBUMP



NLAS4717EPMTR2G
onsemi
IC SWITCH SPDT X 2 3.5OHM
10WQFN



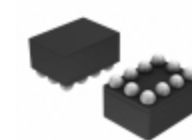
NLAS4783MN1R2G
onsemi
IC SWITCH SPDT X 3 10HM 16QFN



NLAS4599DTT1
onsemi
IC SWITCH SPDT X 1 250HM 6TSOP



NLAS4599DTT1G
onsemi
IC SWITCH SPDT X 1 250HM 6TSOP



NLAS4717FCT1G
onsemi
IC SW SPDTX2 3.5OHM
10MICROBUMP



NLAS4717FCT1
onsemi
IC SW SPDTX2 3.5OHM
10MICROBUMP



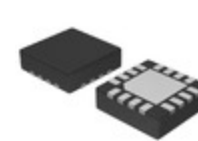
NLAS4684MNR2
onsemi
IC SWITCH SPDT X 2 800MOHM
10DFN



NLAS4717MR2G
onsemi
IC SWITCH SPDTX2 3.5OHM
10MICRO



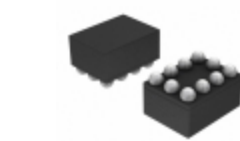
NLAS4684FCTCG
onsemi
IC SW SPDTX2 800MOHM
10MICROBUMP



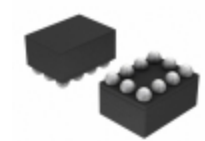
NLAS4783BMN1R2G
onsemi
IC SWITCH SPDT X 3 1OHM 16QFN



NLAS4684MNR2G
onsemi
IC SWITCH SPDT X 2 800MOHM
10DFN



NLAS4684FCT1G
onsemi
IC SW SPDTX2 800MOHM
10MICROBUMP



NLAS4684FCT1
onsemi
IC SW SPDTX2 800MOHM
10MICROBUMP



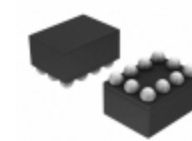
NLAS4717EPFCT1G
onsemi
IC SW SPDTX2 3.5OHM
10MICROBUMP



NLAS4599DFT2G
onsemi
IC SWITCH SPDTX1 250HM SC88



NLAS4684
AMI Semiconductor/onsemi



NLAS4685FCT1
onsemi
IC SW SPDTX2 800MOHM
10MICROBUMP

Shipment

Delivery Time

In-stock items can be shipped within 24 hours. Some parts will be arranged for delivery within 1-2 days from the date all items arrive at our warehouse. And Allelco ships order once a day at about 17:00, except Sunday. Once the goods are shipped, the estimated delivery time depends on the shipping methods and Delivery destination. The table below shows are the logistic time for some common countries.

Delivery Cost

- > Use your express account for shipment if you have one.
 - > Use our account for the shipment. Refer to the table below for the approximate charges.
- (Different time frame / countries / package size has different price.)

Delivery Method

- > Global Common Shipment by DHL / UPS / FedEx / TNT / EMS / SF we support.
- > Others more shipping ways, please get in touch with your customer manager.

Common Countries Logistic Time Reference

Region	Country	Logistic Time(Day)
America	United States	5
	Brazil	7
Europe	Germany	5
	United Kingdom	4
	Italy	5
Oceania	Australia	6
	New Zealand	7
Asia	India	6
	Japan	7
Middle East	Israel	6

DHL & FedEx Shipment Charges Reference

Shipment charges(KG)	Reference DHL(USD\$)
0.00kg-1.00kg	USD\$60.00
1.00kg-2.00kg	USD\$70.00
2.00kg-3.00kg	USD\$80.00

Note: The above table is for reference only. There may have some data bias for the uncontrollable factors.

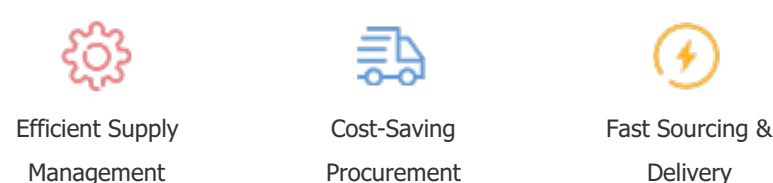
Contact us if you have any questions.

Payment Support

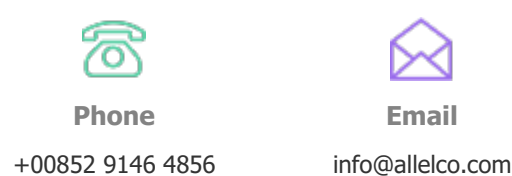
The payment method can be chosen from the methods shown below:
Wire Transfer (T/T, Bank Transfer), Western Union, Credit card,
PayPal.



Your Faithful Supply Chain Partner -



Contact us if you have any questions.



Phone
+00852 9146 4856

Email
info@allelco.com

Certifications & Memberships



View More

