



Image may be representation.
See specifications for product details.



SMF24A-E3-08

Manufacturer Part Number	SMF24A-E3-08
Manufacturer	Vishay General Semiconductor – Diodes Division
Allelco Part Number	32D-SMF24A-E3-08
ECAD Model	PCB Symbol, Footprint & 3D Mode
Parts Description	TVS DIODE 24VWM 38.9VC SMF
Package	DO-219AB
Data sheet	SMF5V0A - SMF58A.pdf
RoHs Status	ROHS3 Compliant

[Get a Quote](#)

SMF24A-E3-08 - Vishay General Semiconductor - Diodes Division. New Original in Stock. Download Linear Technology SMF24A-E3-08 datasheet/specifications on AllelcoElec.com.
Request a quote for SMF24A-E3-08, please send us email: info@allelco.com

Specifications

SMF24A-E3-08 Tech Specifications

SMF24A-E3-08 - Vishay General Semiconductor - Diodes Division technical specifications, attributes, parameters

Product Attribute	Attribute Value	Product Attribute	Attribute Value
Manufacturer	Vishay General Semiconductor – Diodes Division	Power - Peak Pulse	200W
Voltage - Reverse Standoff (Typ)	24V	Package / Case	DO-219AB
Voltage - Clamping (Max) @ Ipp	38.9V	Package	Tape & Reel (TR)
Voltage - Breakdown (Min)	26.7V	Operating Temperature	-65°C ~ 175°C (TJ)
Unidirectional Channels	1	Mounting Type	Surface Mount
Type	Zener	Current - Peak Pulse (10/1000µs)	5.1A
Supplier Device Package	DO-219AB (SMF)	Capacitance @ Frequency	244pF @ 1MHz
Series	eSMP®	Base Product Number	SMF24
Power Line Protection	No	Applications	General Purpose

Parts with Similar Specifications

The three parts on the right have similar specifications to Vishay General Semiconductor - Diodes Division SMF24A-E3-08

Product Attribute				
Part Number	SMF24A-E3-08	SMF24A_R1_00001	SMF24A-M3-08	SMF24CA
Manufacturer	Vishay General Semiconductor - Diodes Division	Panjit International Inc.	Vishay General Semiconductor - Diodes Division	Diotec Semiconductor
Series	eSMP®	-	eSMP®	-
Applications	General Purpose	General Purpose	General Purpose	General Purpose
Voltage - Clamping (Max) @ Ipp	38.9V	38.9V	38.9V	38.9V
Type	Zener	Zener	Zener	Zener
Capacitance @ Frequency	244pF @ 1MHz	-	244pF @ 1MHz	-
Package / Case	DO-219AB	SOD-123F	DO-219AB	SOD-123F
Unidirectional Channels	1	1	1	-
Operating Temperature	-65°C ~ 175°C (TJ)	-55°C ~ 150°C (TJ)	-65°C ~ 175°C (TJ)	-50°C ~ 150°C (TJ)
Voltage - Breakdown (Min)	26.7V	26.7V	26.7V	26.7V
Power - Peak Pulse	200W	200W	200W	200W
Package	Tape & Reel (TR)	Tape & Reel (TR)	Tape & Reel (TR)	Tape & Reel (TR)
Base Product Number	SMF24	SMF24	SMF24	-
Supplier Device Package	DO-219AB (SMF)	SOD-123FL	DO-219AB (SMF)	SOD-123F (SMF)
Mounting Type	Surface Mount	Surface Mount	Surface Mount	Surface Mount
Current - Peak Pulse (10/1000µs)	5.1A	5.1A	5.1A	5.14A
Voltage - Reverse Standoff (Typ)	24V	24V	24V	24V
Power Line Protection	No	No	No	No

SMF24A-E3-08 Datasheet PDF

Download SMF24A-E3-08 pdf datasheets and Vishay General Semiconductor - Diodes Division documentation for SMF24A-E3-08 - Vishay General Semiconductor - Diodes Division.

Datasheets

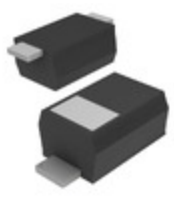
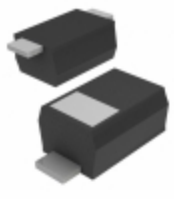
[SMF5V0A - SMF58A.pdf](#)

PCN Assembly/Origin

[Mult Dev Plating House Add 15/Jan/2021.pdf](#)

Customers Also Interested in

Recommended Products

**SMF24A_R1_00001**Panjit International Inc.
SOD-123FL, TVS**SMF24A-M3-08**Vishay General Semiconductor -
Diodes Division
TVS DIODE 24VWM 38.9VC SMF**SMF24CA**Diotec Semiconductor
TVS SOD-123FL 24V 200W BI**SMF24A**Littelfuse Inc.
TVS DIODE 24VWM 38.9VC SOD123F**SMF24A**Yangzhou Yangjie Electronic
Technology Co.,Ltd
TVS DIODE 24VWM 38.9VC
SOD123FL**SMF24A**Meritek
TVS DIODE 24VWM 38.9VC**SMF24A-TP**Micro Commercial Co
TVS DIODE 24VWM 38.9VC
SOD123FL**SMF24A**Taiwan Semiconductor
Corporation
TVS DIODE 24VWM 38.9VC
SOD123W**SMF22CA**Yangzhou Yangjie Electronic
Technology Co.,Ltd
TVS DIODE 22VWM 35.5VC
SOD123FL**SMF24CA**Littelfuse Inc.
TVS DIODE 24VWM 38.9VC SOD123F**SMF22CA**Meritek
TVS DIODE 22VWM 35.5VC**SMF24A-HE3-08**Vishay General Semiconductor -
Diodes Division
TVS DIODE 24VWM 38.9VC DO219AB**SMF22CA**Diotec Semiconductor
TVS SOD-123FL 22V 200W BI**SMF22CA-E3-08**

Electro-Films (EFI) / Vishay

**SMF24A**Diotec Semiconductor
TVS SOD-123FL 24V 200W UNI**SMF24AT1G**Littelfuse Inc.
TVS DIODE 24VWM 38.9VC
SOD123FL**SMF22CA**Littelfuse Inc.
TVS DIODE 22VWM 35.5VC
SOD123FL**SMF24A-GS08**

Electro-Films (EFI) / Vishay

Shipment

Delivery Time

In-stock items can be shipped within 24 hours. Some parts will be arranged for delivery within 1-2 days from the date all items arrive at our warehouse. And Allelco ships order once a day at about 17:00, except Sunday. Once the goods are shipped, the estimated delivery time depends on the shipping methods and Delivery destination. The table below shows are the logistic time for some common countries.

Delivery Cost

> Use your express account for shipment if you have one.

> Use our account for the shipment. Refer to the table below for the approximate charges.

(Different time frame / countries / package size has different price.)

Delivery Method

> Global Common Shipment by DHL / UPS / FedEx / TNT / EMS / SF we support.

> Others more shipping ways, please get in touch with your customer manager.

Common Countries Logistic Time Reference		
Region	Country	Logistic Time(Day)
America	United States	5
	Brazil	7
Europe	Germany	5
	United Kingdom	4
	Italy	5
Oceania	Australia	6
	New Zealand	7
Asia	India	6
	Japan	7
Middle East	Israel	6

DHL & FedEx Shipment Charges Reference	
Shipment charges(KG)	Reference DHL(USD\$)
0.00kg-1.00kg	USD\$60.00
1.00kg-2.00kg	USD\$70.00
2.00kg-3.00kg	USD\$80.00

Note: The above table is for reference only. There may have some data bias for the uncontrollable factors.
Contact us if you have any questions.

Payment Support

The payment method can be chosen from the methods shown below:
Wire Transfer (T/T, Bank Transfer), Western Union, Credit card,
PayPal.



Your Faithful Supply Chain Partner -

Efficient Supply
ManagementCost-Saving
ProcurementFast Sourcing &
Delivery

Contact us if you have any questions.



Phone

+00852 9146 4856



Email

info@allelco.com

Certifications & Memberships



[View More](#)