

Image may be representation.
See specifications for product details.



M48T129V-85PM1

Manufacturer Part Number	M48T129V-85PM1
Manufacturer	STMicroelectronics
Allelco Part Number	32D-M48T129V-85PM1
ECAD Model	Request Free CAD Models
Parts Description	IC RTC CLOCK/CALENDAR PAR 32DIP
Package	32-DIP Module (0.600", 15.24mm)
Data sheet	M48T129V,Y.pdf
RoHs Status	ROHS3 Compliant

Get a Quote

M48T129V-85PM1 - STMicroelectronics.New Original in Stock. Download Linear Technology M48T129V-85PM1 datasheet/specifications on AllelcoElec.com.
Request a quote for M48T129V-85PM1, please send us email: info@allelco.com

Specifications

M48T129V-85PM1 Tech Specifications

M48T129V-85PM1 - STMicroelectronics technical specifications, attributes, parameters

Product Attribute	Attribute Value	Product Attribute	Attribute Value
Manufacturer	STMicroelectronics	Operating Temperature	0°C ~ 70°C
Voltage - Supply, Battery	-	Mounting Type	Through Hole
Voltage - Supply	3V ~ 3.6V	Memory Size	-
Type	Clock/Calendar	Interface	Parallel
Time Format	HH:MM:SS (24 hr)	Features	Alarm, Leap Year, Watchdog Timer
Supplier Device Package	32-PMDIP Module	Date Format	YY-MM-DD-dd
Series	Timekeeper®	Current - Timekeeping (Max)	3mA @ 3V ~ 3.6V
Package / Case	32-DIP Module (0.600", 15.24mm)	Base Product Number	M48T129
Package	Tube		

Parts with Similar Specifications

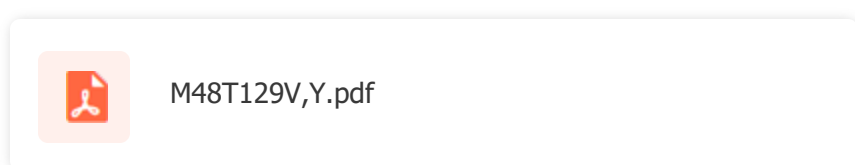
The three parts on the right have similar specifications to STMicroelectronics M48T129V-85PM1

Product Attribute				
Part Number	M48T129V-85PM1	M48T12-150PC1	M48T201V-85MH1E	M48T18-100PC1
Manufacturer	STMicroelectronics	STMicroelectronics	STMicroelectronics	STMicroelectronics
Operating Temperature	0°C ~ 70°C	0°C ~ 70°C	0°C ~ 70°C	0°C ~ 70°C
Memory Size	-	-	-	-
Type	Clock/Calendar	Clock/Calendar	Clock/Calendar	Clock/Calendar
Features	Alarm, Leap Year, Watchdog Timer	Leap Year	Alarm, Leap Year, Square Wave Output, Supervisor, Watchdog Timer, Y2K	Leap Year, Watchdog Timer
Voltage - Supply, Battery	-	-	3V	-
Date Format	YY-MM-DD-dd	YY-MM-DD-dd	YY-MM-DD-dd	YY-MM-DD-dd
Series	Timekeeper®	Timekeeper®	Timekeeper®	Timekeeper®
Current - Timekeeping (Max)	3mA @ 3V ~ 3.6V	3mA @ 4.5V ~ 5.5V	2mA @ 3V ~ 3.6V	3mA @ 4.5V ~ 5.5V
Package / Case	32-DIP Module (0.600", 15.24mm)	24-DIP Module (0.600", 15.24mm)	44-BSON (0.337", 8.56mm Width) requires SNAPHAT	28-DIP Module (0.600", 15.24mm)
Interface	Parallel	Parallel	Parallel	Parallel
Package	Tube	Tube	Tube	Tube
Voltage - Supply	3V ~ 3.6V	4.5V ~ 5.5V	3V ~ 3.6V	4.5V ~ 5.5V
Base Product Number	M48T129	M48T12	M48T201	M48T18
Supplier Device Package	32-PMDIP Module	24-PCDIP, CAPHAT®	44-SOH	28-PCDIP, CAPHAT®
Time Format	HH:MM:SS (24 hr)	HH:MM:SS (24 hr)	HH:MM:SS (24 hr)	HH:MM:SS (24 hr)
Mounting Type	Through Hole	Through Hole	Surface Mount	Through Hole

M48T129V-85PM1 Datasheet PDF

Download M48T129V-85PM1 pdf datasheets and STMicroelectronics documentation for M48T129V-85PM1 - STMicroelectronics.

HTML Datasheet



Customers Also Interested in

Recommended Products



M48T12-120PC1
STMicroelectronics



M48T12-150PC1
STMicroelectronics
IC RTC CLK/CALENDAR PAR 24DIP



M48T128-70PC1
STMicroelectronics



M48T18Y
STMicroelectronics



M48T08Y-200PC1
STMicroelectronics



M48T08Y-70PC1
STMicroelectronics



M48T08Y-120PC1

STMicroelectronics

M48T201V-85MH1E

STMicroelectronics
IC RTC CLK/CALENDAR PAR 44SOH

M48T18-120PC1

STMicroelectronics

M48T08Y-150PC1

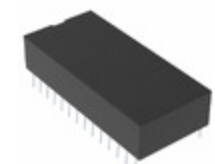
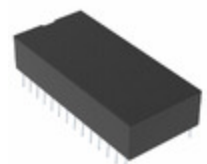
STMicroelectronics

M48T18-100MH1

STMicroelectronics

M48T201V-85MH1

STMicroelectronics



M48T18-100PC1

STMicroelectronics
IC RTC CLK/CALENDAR PAR 28DIP

M48T129Y-70PM1

STMicroelectronics
IC RTC CLK/CALENDAR PAR 32DIP

M48T12-70PC1

STMicroelectronics
IC RTC CLK/CALENDAR PAR 24DIP

M48T18-150PC1

STMicroelectronics
IC RTC CLK/CALENDAR PAR 28DIP

M48T101Y-150MH5

STMicroelectronics

M48T12-150PC1R

STMicroelectronics

Shipment

Delivery Time

In-stock items can be shipped within 24 hours. Some parts will be arranged for delivery within 1-2 days from the date all items arrive at our warehouse. And Allelco ships order once a day at about 17:00, except Sunday. Once the goods are shipped, the estimated delivery time depends on the shipping methods and Delivery destination. The table below shows are the logistic time for some common countries.

Delivery Cost

> Use your express account for shipment if you have one.

> Use our account for the shipment. Refer to the table below for the approximate charges.

(Different time frame / countries / package size has different price.)

Delivery Method

> Global Common Shipment by DHL / UPS / FedEx / TNT / EMS / SF we support.

> Others more shipping ways, please get in touch with your customer manager.

Common Countries Logistic Time Reference

Region	Country	Logistic Time(Day)
America	United States	5
	Brazil	7
Europe	Germany	5
	United Kingdom	4
	Italy	5
Oceania	Australia	6
	New Zealand	7
Asia	India	6
	Japan	7
Middle East	Israel	6

DHL & FedEx Shipment Charges Reference

Shipment charges(KG)	Reference DHL(USD\$)
0.00kg-1.00kg	USD\$60.00
1.00kg-2.00kg	USD\$70.00
2.00kg-3.00kg	USD\$80.00

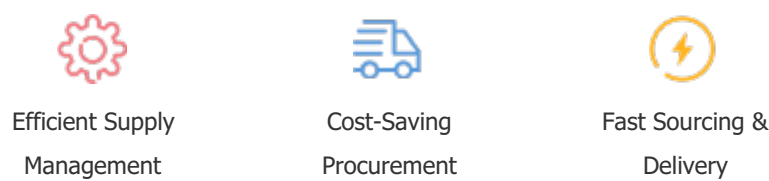
Note: The above table is for reference only. There may have some data bias for the uncontrollable factors.
Contact us if you have any questions.

Payment Support

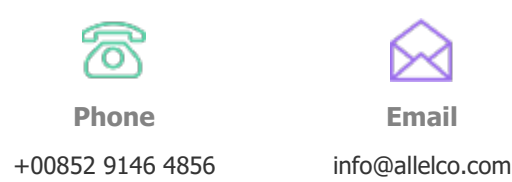
The payment method can be chosen from the methods shown below:
Wire Transfer (T/T, Bank Transfer), Western Union, Credit card, PayPal.



Your Faithful Supply Chain Partner -



Contact us if you have any questions.



Certifications & Memberships



View More



Contact us

Address: Flat/Rm C 13/F Harvard Commercial Building 105-111 Thomson Road, Wan Chai, Hong Kong
Phone: +00852 9146 4856
Fax: +00852 3010 8510
Email: info@allelco.com

Copyright © 2012-2023 AllelcoElec.com. All rights reserved.