



Image may be representation.
See specifications for product details.



SMCJ5.0A-E3/57T

Manufacturer Part Number	SMCJ5.0A-E3/57T
Manufacturer	Vishay General Semiconductor – Diodes Division
Allelco Part Number	32D-SMCJ5.0A-E3/57T
ECAD Model	Request Free CAD Models
Parts Description	TVS DIODE 5VWM 9.2VC DO214AB
Package	DO-214AB, SMC
Data sheet	SMCJ5.0A thru SMCJ188CA.pdf SMCJ5.0A thru SMCJ188CA.pdf
RoHs Status	ROHS3 Compliant

[Get a Quote](#)

SMCJ5.0A-E3/57T - Vishay General Semiconductor - Diodes Division. New Original in Stock. Download Linear Technology SMCJ5.0A-E3/57T datasheet/specifications on AllelcoElec.com.
Request a quote for SMCJ5.0A-E3/57T, please send us email: info@allelco.com

Specifications

SMCJ5.0A-E3/57T Tech Specifications
SMCJ5.0A-E3/57T - Vishay General Semiconductor - Diodes Division technical specifications, attributes, parameters

Product Attribute	Attribute Value	Product Attribute	Attribute Value
Manufacturer	Vishay General Semiconductor – Diodes Division	Power - Peak Pulse	1500W (1.5kW)
Voltage - Reverse Standoff (Typ)	5V	Package / Case	DO-214AB, SMC
Voltage - Clamping (Max) @ Ipp	9.2V	Package	Tape & Reel (TR)
Voltage - Breakdown (Min)	6.4V	Operating Temperature	-55°C ~ 150°C (TJ)
Unidirectional Channels	1	Mounting Type	Surface Mount
Type	Zener	Current - Peak Pulse (10/1000µs)	163A
Supplier Device Package	DO-214AB (SMCJ)	Capacitance @ Frequency	-
Series	TransZorb®	Base Product Number	SMCJ5.0
Power Line Protection	No	Applications	General Purpose

Parts with Similar Specifications

The three parts on the right have similar specifications to Vishay General Semiconductor - Diodes Division SMCJ5.0A-E3/57T

Product Attribute				
Part Number	SMCJ5.0A-E3/57T	SMCJ5.0CA	SMCJ5.0A	SMCJ5.0CA
Manufacturer	Vishay General Semiconductor - Diodes Division	Littelfuse Inc.	Littelfuse Inc.	Bourns Inc.
Applications	General Purpose	General Purpose	General Purpose	General Purpose
Capacitance @ Frequency	-	-	-	-
Power - Peak Pulse	1500W (1.5kW)	1500W (1.5kW)	1500W (1.5kW)	1500W (1.5kW)
Unidirectional Channels	1	-	1	-
Type	Zener	Zener	Zener	Zener
Package	Tape & Reel (TR)	Tape & Reel (TR)	Tape & Reel (TR)	Tape & Reel (TR)
Base Product Number	SMCJ5.0	-	-	SMCJ5
Supplier Device Package	DO-214AB (SMCJ)	DO-214AB (SMCJ)	DO-214AB (SMCJ)	DO-214AB (SMC)
Voltage - Reverse Standoff (Typ)	5V	5V	5V	5V
Voltage - Breakdown (Min)	6.4V	6.4V	6.4V	6.4V
Mounting Type	Surface Mount	Surface Mount	Surface Mount	Surface Mount
Current - Peak Pulse (10/1000µs)	163A	163A	163A	163A
Series	TransZorb®	SMCJ	SMCJ	SMCJ
Power Line Protection	No	No	No	No
Package / Case	DO-214AB, SMC	DO-214AB, SMC	DO-214AB, SMC	DO-214AB, SMC
Voltage - Clamping (Max) @ Ipp	9.2V	9.2V	9.2V	9.2V
Operating Temperature	-55°C ~ 150°C (TJ)	-55°C ~ 150°C (TJ)	-55°C ~ 150°C (TJ)	-55°C ~ 150°C (TJ)

SMCJ5.0A-E3/57T Datasheet PDF

Download SMCJ5.0A-E3/57T pdf datasheets and Vishay General Semiconductor - Diodes Division documentation for SMCJ5.0A-E3/57T - Vishay General Semiconductor - Diodes Division.

Datasheets

[SMCJ5.0A thru SMCJ188CA.pdf](#)

PCN Assembly/Origin

[Multiple Parts 30/Mar/2022.pdf](#)

HTML Datasheet

[SMCJ5.0A thru SMCJ188CA.pdf](#)

Customers Also Interested in

Recommended Products

 SMCJ5.0A R6 Taiwan Semiconductor	 SMCJ5.0CA Littelfuse Inc. TVS DIODE 5VWM 9.2VC DO214AB	 SMCJ5.0A Littelfuse Inc. TVS DIODE 5VWM 9.2VC DO214AB	 SMCJ5.0A-F LITEON	 SMCJ5.0CA Bourns Inc. TVS DIODE 5VWM 9.2VC DO214AB	 SMCJ5.0A-TP Micro Commercial Co TVS DIODE 5VWM 9.2VC DO214AB
 SMCJ5.0A Bourns Inc. TVS DIODE 5VWM 9.2VC SMC	 SMCJ5.0A SMC Diode Solutions TVS DIODE 5VWM 9.2VC SMC	 SMCJ5.0CA Meritek TVS DIODE 5VWM 9.2VC	 SMCJ5.0A Meritek TVS DIODE 5VWM 9.2VC	 SMCJ5.0CA SMC Diode Solutions TVS DIODE 5VWM 9.2VC SMC	 SMCJ5.0A-13-F Diodes Incorporated TVS DIODE 5VWM 9.2VC SMC
 SMCJ5.0A-TR STMicroelectronics TVS DIODE 5VWM 13.4VC SMC	 SMCJ5.0A MDD TVS DIODE 5VWM 9.2VC SMC	 SMCJ5.0A-7101 Electro-Films (EFI) / Vishay	 SMCJ5.0A-E3/57 Electro-Films (EFI) / Vishay	 SMCJ5.0CA KYOCERA AVX TVS DIODE 5VWM 9.2VC DO214AB	 SMCJ5.0AHE3/57T Electro-Films (EFI) / Vishay TVS DIODE 5V 9.2V DO214AB

Shipment

Delivery Time

In-stock items can be shipped within 24 hours. Some parts will be arranged for delivery within 1-2 days from the date all items arrive at our warehouse. And Allelco ships order once a day at about 17:00, except Sunday. Once the goods are shipped, the estimated delivery time depends on the shipping methods and Delivery destination. The table below shows are the logistic time for some common countries.

Delivery Cost

- > Use your express account for shipment if you have one.
- > Use our account for the shipment. Refer to the table below for the approximate charges.
(Different time frame / countries / package size has different price.)

Delivery Method

- > Global Common Shipment by DHL / UPS / FedEx / TNT / EMS / SF we support.
- > Others more shipping ways, please get in touch with your customer manager.

Common Countries Logistic Time Reference		
Region	Country	Logistic Time(Day)
America	United States	5
	Brazil	7
Europe	Germany	5
	United Kingdom	4
	Italy	5
Oceania	Australia	6
	New Zealand	7
Asia	India	6
	Japan	7
Middle East	Israel	6

DHL & FedEx Shipment Charges Reference	
Shipment charges(KG)	Reference DHL(USD\$)
0.00kg-1.00kg	USD\$60.00
1.00kg-2.00kg	USD\$70.00
2.00kg-3.00kg	USD\$80.00

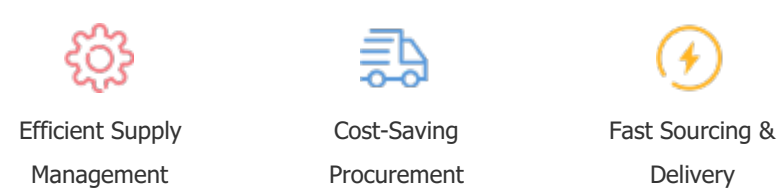
Note: The above table is for reference only. There may have some data bias for the uncontrollable factors.
Contact us if you have any questions.

Payment Support

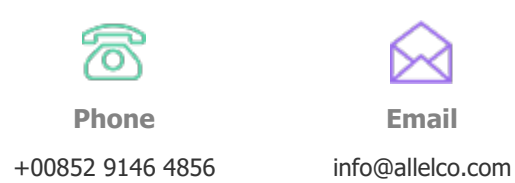
The payment method can be chosen from the methods shown below:
Wire Transfer (T/T, Bank Transfer), Western Union, Credit card,
PayPal.



Your Faithful Supply Chain Partner -



Contact us if you have any questions.



Certifications & Memberships



[View More](#)