



Image may be representation.
See specifications for product details.



VNL5300S5TR-E

Manufacturer Part Number	VNL5300S5TR-E
Manufacturer	STMicroelectronics
Allelco Part Number	32D-VNL5300S5TR-E
ECAD Model	PCB Symbol, Footprint & 3D Model
Parts Description	IC PWR DRIVER N-CHANNEL 1:1 8SO
Package	8-SOIC (0.154", 3.90mm Width)
Data sheet	VNL5300S5(TR)-E.pdf
RoHs Status	ROHS3 Compliant

[Get a Quote](#)

VNL5300S5TR-E - STMicroelectronics.New Original in Stock. Download Linear Technology VNL5300S5TR-E datasheet/specifications on AllelcoElec.com.
Request a quote for VNL5300S5TR-E, please send us email: info@allelco.com

Specifications

VNL5300S5TR-E Tech Specifications

VNL5300S5TR-E - STMicroelectronics technical specifications, attributes, parameters

Product Attribute	Attribute Value	Product Attribute	Attribute Value
Manufacturer	STMicroelectronics	Output Configuration	Low Side
Voltage - Supply (Vcc/Vdd)	3.5V ~ 5.5V	Operating Temperature	-40°C ~ 150°C (TJ)
Voltage - Load	36V (Max)	Number of Outputs	1
Switch Type	General Purpose	Mounting Type	Surface Mount
Supplier Device Package	8-SOIC	Interface	On/Off
Series	OMNIFET III™, VIPower™	Input Type	Non-Inverting
Rds On (Typ)	300mOhm	Features	Auto Restart, Status Flag
Ratio - Input:Output	1:1	Fault Protection	Current Limiting (Fixed), Open Load Detect, Over Temperature, Over Voltage, UVLO
Package / Case	8-SOIC (0.154", 3.90mm Width)	Current - Output (Max)	2A
Package	Tape & Reel (TR)	Base Product Number	VNL5300
Output Type	N-Channel		

Parts with Similar Specifications

The three parts on the right have similar specifications to STMicroelectronics VNL5300S5TR-E

Product Attribute				
Part Number	VNL5300S5TR-E	VNL5050S5TR-E	VNL5090S5TR-E	VNL5090-E
Manufacturer	STMicroelectronics	STMicroelectronics	STMicroelectronics	STMicroelectronics
Supplier Device Package	8-SOIC	8-SOIC	8-SOIC	8-SOIC
Switch Type	General Purpose	General Purpose	General Purpose	General Purpose
Mounting Type	Surface Mount	Surface Mount	Surface Mount	Surface Mount
Series	OMNIFET III™, VIPower™	OMNIFET III™, VIPower™	OMNIFET III™, VIPower™	OMNIFET III™, VIPower™
Output Configuration	Low Side	Low Side	Low Side	Low Side
Voltage - Load	36V (Max)	36V (Max)	36V (Max)	36V (Max)
Interface	On/Off	On/Off	On/Off	On/Off
Features	Auto Restart, Status Flag	Auto Restart, Status Flag	Auto Restart, Status Flag	Auto Restart, Status Flag
Operating Temperature	-40°C ~ 150°C (TJ)	-40°C ~ 150°C (TJ)	-40°C ~ 150°C (TJ)	-40°C ~ 150°C (TJ)
Package / Case	8-SOIC (0.154", 3.90mm Width)	8-SOIC (0.154", 3.90mm Width)	8-SOIC (0.154", 3.90mm Width)	8-SOIC (0.154", 3.90mm Width)
Voltage - Supply (Vcc/Vdd)	3.5V ~ 5.5V	3.5V ~ 5.5V	-	Not Required
Current - Output (Max)	2A	19A	13A	13A
Base Product Number	VNL5300	VNL5050	VNL5090	VNL5090
Fault Protection	Current Limiting (Fixed), Open Load Detect, Over Temperature, Over Voltage, UVLO	Current Limiting (Fixed), Over Temperature, Over Voltage	Current Limiting (Fixed), Open Load Detect, Over Temperature, Over Voltage	Current Limiting (Fixed), Open Load Detect, Over Temperature, Over Voltage, UVLO
Rds On (Typ)	300mOhm	50mOhm (Max)	90mOhm (Max)	90mOhm (Max)
Output Type	N-Channel	N-Channel	N-Channel	N-Channel
Ratio - Input:Output	1:1	1:1	1:1	1:1
Package	Tape & Reel (TR)	Tape & Reel (TR)	Tape & Reel (TR)	Tube
Input Type	Non-Inverting	Non-Inverting	Non-Inverting	Non-Inverting
Number of Outputs	1	1	1	2

VNL5300S5TR-E Datasheet PDF

Download VNL5300S5TR-E pdf datasheets and STMicroelectronics documentation for VNL5300S5TR-E - STMicroelectronics.

PCN Packaging

[Material Barrier Bag 17/Dec/2020.pdf](#)

[Mult Dev Label Chgs 29/Oct/2020.pdf](#)


PCN Assembly/Origin

[Mult Dev 21/Dec/2022.pdf](#)

PCN Design/Specification

 Datasheet Update 20/Dec/2021.pdf

HTML Datasheet

 VNL5300S5(TR)-E.pdf

Customers Also Interested in

Recommended Products

					
VNL5050N3TR 2000	VNL5050S5TR-E STMicroelectronics IC PWR DRIVER N-CHANNEL 1:1 8SO	VNL5090N3TR STMicroelectronics	VNL5160S5TR-C STMicroelectronics	VNL5090S5TR-E STMicroelectronics IC PWR DRIVER N-CHANNEL 1:1 8SO	VNL5090-E STMicroelectronics IC PWR DRIVER N-CHANNEL 1:1 8SO
					
VNL5050S5-E STMicroelectronics IC PWR DRIVER N-CHANNEL 1:1 8SO	VNL5050N3TR-E STMicroelectronics IC PWR DRIVER N-CHAN 1:1 SOT223	VNL5300-E STMicroelectronics IC PWR DRIVER N-CHAN 1:1 8SOIC	VNL5160TR-E STMicroelectronics IC PWR DRIVER N-CHANNEL 1:1 8SO	VNL5090TR-E STMicroelectronics IC PWR DRIVER N-CHANNEL 1:1 8SO	VNL5030S5TR-E STMicroelectronics IC PWR DRIVER N-CHANNEL 1:1 8SO
					
VNL5300TR-E STMicroelectronics IC PWR DRIVER N-CHANNEL 1:1 8SO	VNL5160N3TR-E STMicroelectronics IC PWR SWITCH N-CHAN 1:1 SOT223	VNL5090N3TR-E STMicroelectronics IC PWR DRIVER N-CHAN 1:1 SOT223	VNL5050S5TR STMicroelectronics	VNL5300S5-E STMicroelectronics IC PWR DRIVER N-CHANNEL 1:1 8SO	VNL5160S5TR-E STMicroelectronics IC PWR SWITCH N-CHANNEL 1:1 8SO

Shipment

Delivery Time

In-stock items can be shipped within 24 hours. Some parts will be arranged for delivery within 1-2 days from the date all items arrive at our warehouse. And Allelco ships order once a day at about 17:00, except Sunday. Once the goods are shipped, the estimated delivery time depends on the shipping methods and Delivery destination. The table below shows are the logistic time for some common countries.

Delivery Cost

- > Use your express account for shipment if you have one.
 - > Use our account for the shipment. Refer to the table below for the approximate charges.
- (Different time frame / countries / package size has different price.)

Delivery Method

- > Global Common Shipment by DHL / UPS / FedEx / TNT / EMS / SF we support.
- > Others more shipping ways, please get in touch with your customer manager.

Common Countries Logistic Time Reference		
Region	Country	Logistic Time(Day)
America	United States	5
	Brazil	7
Europe	Germany	5
	United Kingdom	4
	Italy	5
Oceania	Australia	6
	New Zealand	7
Asia	India	6
	Japan	7
Middle East	Israel	6

DHL & FedEx Shipment Charges Reference	
Shipment charges(KG)	Reference DHL(USD\$)
0.00kg-1.00kg	USD\$60.00
1.00kg-2.00kg	USD\$70.00
2.00kg-3.00kg	USD\$80.00

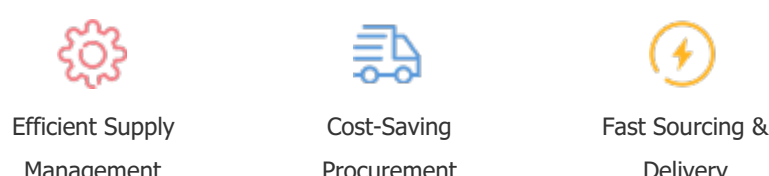
Note: The above table is for reference only. There may have some data bias for the uncontrollable factors. Contact us if you have any questions.

Payment Support

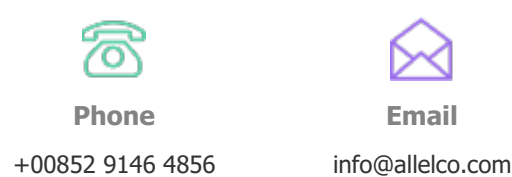
The payment method can be chosen from the methods shown below:
Wire Transfer (T/T, Bank Transfer), Western Union, Credit card, PayPal.



Your Faithful Supply Chain Partner -



Contact us if you have any questions.



Certifications & Memberships



[View More](#)

