

Image may be representation.
See specifications for product details.



CAT6219ADJTD-GT3

Manufacturer Part Number	CAT6219ADJTD-GT3
Manufacturer	onsemi
Allelco Part Number	32D-CAT6219ADJTD-GT3
ECAD Model	PCB Symbol, Footprint & 3D Model
Parts Description	IC REG LIN POS ADJ 500MA TSOT23
Package	SOT-23-5 Thin, TSOT-23-5
Data sheet	Cylindrical Battery Holders.pdf Cylindrical Battery Holders.pdf
RoHs Status	ROHS3 Compliant

Get a Quote

CAT6219ADJTD-GT3 - onsemi.New Original in Stock. Download Linear Technology CAT6219ADJTD-GT3 datasheet/specifications on AllelcoElec.com.
Request a quote for CAT6219ADJTD-GT3, please send us email: info@allelco.com

Specifications

CAT6219ADJTD-GT3 Tech Specifications
CAT6219ADJTD-GT3 - onsemi technical specifications, attributes, parameters

Product Attribute	Attribute Value	Product Attribute	Attribute Value
Manufacturer	onsemi	Output Type	Adjustable
Voltage Dropout (Max)	0.5V @ 500mA	Output Configuration	Positive
Voltage - Output (Min/Fixed)	1.25V	Operating Temperature	-40°C ~ 125°C
Voltage - Output (Max)	5V	Number of Regulators	1
Voltage - Input (Max)	5.5V	Mounting Type	Surface Mount
Supplier Device Package	TSOT-23-5	Current - Supply (Max)	90 µA
Series	-	Current - Quiescent (Iq)	75 µA
Protection Features	Over Current, Over Temperature, Under Voltage Lockout (UVLO)	Current - Output	500mA
Package / Case	SOT-23-5 Thin, TSOT-23-5	Control Features	Enable
Package	Tape & Reel (TR)	Base Product Number	CAT6219
PSRR	64dB ~ 54dB (1kHz ~ 20kHz)		

Parts with Similar Specifications

The three parts on the right have similar specifications to onsemi CAT6219ADJTD-GT3

Product Attribute				
Part Number	CAT6219ADJTD-GT3	CAT6219-330TD-GT3	CAT6219-280MV2T3	CAT6243-ADJCM15T
Manufacturer	onsemi	Catalyst Semiconductor Inc.	onsemi	onsemi
Current - Supply (Max)	90 µA	90 µA	90 µA	250 µA
Package	Tape & Reel (TR)	Bulk	Tape & Reel (TR)	Tape & Reel (TR)
Number of Regulators	1	1	1	1
Current - Quiescent (Iq)	75 µA	90 µA	75 µA	100 µA
Base Product Number	CAT6219	-	CAT6219	CAT6243
Series	-	-	-	-
Supplier Device Package	TSOT-23-5	TSOT-23-5	6-WDFN (1.5x1.5)	6-WDFN (3x3)
PSRR	64dB ~ 54dB (1kHz ~ 20kHz)	64dB ~ 54dB (1kHz ~ 20kHz)	64dB ~ 54dB (1kHz ~ 20kHz)	54dB ~ 42dB (1kHz ~ 20kHz)
Protection Features	Over Current, Over Temperature, Under Voltage Lockout (UVLO)	Over Current, Over Temperature, Under Voltage Lockout (UVLO)	Over Current, Over Temperature, Under Voltage Lockout (UVLO)	Over Current, Over Temperature, Under Voltage Lockout (UVLO)
Output Type	Adjustable	Fixed	Fixed	Adjustable
Voltage - Output (Max)	5V	-	-	5V
Package / Case	SOT-23-5 Thin, TSOT-23-5	SOT-23-5 Thin, TSOT-23-5	6-WDFN	6-WDFN Exposed Pad
Current - Output	500mA	500mA	500mA	1A
Voltage Dropout (Max)	0.5V @ 500mA	0.5V @ 500mA	0.5V @ 500mA	0.275V @ 1A
Mounting Type	Surface Mount	Surface Mount	Surface Mount	Surface Mount
Operating Temperature	-40°C ~ 125°C	-40°C ~ 125°C (TJ)	-40°C ~ 125°C	-40°C ~ 85°C
Output Configuration	Positive	Positive	Positive	Positive
Voltage - Output (Min/Fixed)	1.25V	3.3V	2.8V	0.8V
Voltage - Input (Max)	5.5V	5.5V	5.5V	5V
Control Features	Enable	Enable	Enable	Enable

CAT6219ADJTD-GT3 Datasheet PDF

Download CAT6219ADJTD-GT3 pdf datasheets and onsemi documentation for CAT6219ADJTD-GT3 - onsemi.

Datasheets

[Cylindrical Battery Holders.pdf](#)

Environmental Information

onsemi RoHS.pdf

HTML Datasheet

Cylindrical Battery Holders.pdf

PCN Obsolescence/ EOL

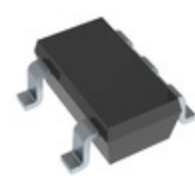
Cylindrical Battery Holders.pdf

PCN Packaging

2.73KHz.pdf

Customers Also Interested in

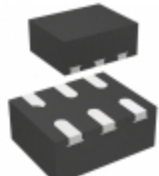
Recommended Products



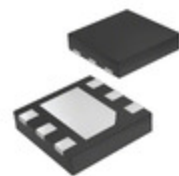
CAT6219-330TD-GT3
Catalyst Semiconductor Inc.
IC REG LINEAR 3.3V 500MA 5TSOP



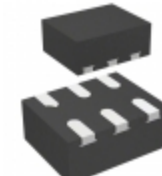
CAT6221-SLTD
AMI Semiconductor/onsemi



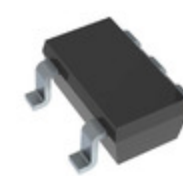
CAT6219-280MV2T3
onsemi
IC REG LINEAR 2.8V 500MA 6WDFN



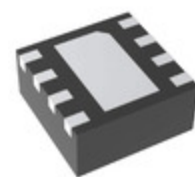
CAT6243-ADJCMT5T
onsemi
IC REG LINEAR POS ADJ 1A 6WDFN



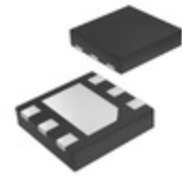
CAT6219-285MV2T3
onsemi
IC REG LINEAR 2.85V 500MA 6WDFN



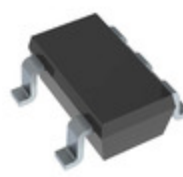
CAT6219-300TDGT3
onsemi
IC REG LINEAR 3V 500MA TSOT23-5



CAT6241-ADJHU2MUTAG
onsemi
IC REG LINEAR POS ADJ 1A 8UDFN



CAT6243-ADJMT5T3
onsemi
IC REG LINEAR POS ADJ 1A 6WDFN



CAT6219-250TDGT3
onsemi
IC REG LIN 2.5V 500MA TSOT23-5



CAT6219ADJVP5GT4
onsemi
IC REG LIN POS ADJ 500MA 6TDFN



CAT6221
CAT



CAT6219-280TDGT3
AMI Semiconductor/onsemi



CAT6221-SFTD-GT3
onsemi
IC REG LDO .3A 3.3/1.5V TSOT23-6



CAT6219-250TD-GT3
SK



CAT6221-MGTD-GT3
onsemi
IC REG LDO .3A 2.8/1.8V TSOT23-6



CAT6219-330TDGT3
onsemi
IC REG LIN 3.3V 500MA TSOT23-5



CAT6219-285TDGT3
onsemi
IC REG LDO 2.85V 500MA TSOT23-5



CAT6221-PPTD
AMI Semiconductor/onsemi

Shipment

Delivery Time

In-stock items can be shipped within 24 hours. Some parts will be arranged for delivery within 1-2 days from the date all items arrive at our warehouse. And Alleco ships order once a day at about 17:00, except Sunday. Once the goods are shipped, the estimated delivery time depends on the shipping methods and Delivery destination. The table below shows are the logistic time for some common countries.

Delivery Cost

- > Use your express account for shipment if you have one.
 - > Use our account for the shipment. Refer to the table below for the approximate charges.
- (Different time frame / countries / package size has different price.)

Delivery Method

- > Global Common Shipment by DHL / UPS / FedEx / TNT / EMS / SF we support.
- > Others more shipping ways, please get in touch with your customer manager.

Common Countries Logistic Time Reference

Region	Country	Logistic Time(Day)
America	United States	5
	Brazil	7
Europe	Germany	5
	United Kingdom	4
	Italy	5
Oceania	Australia	6
	New Zealand	7
Asia	India	6
	Japan	7
Middle East	Israel	6

DHL & FedEx Shipment Charges Reference

Shipment charges(KG)	Reference DHL(USD\$)
0.00kg-1.00kg	USD\$60.00
1.00kg-2.00kg	USD\$70.00
2.00kg-3.00kg	USD\$80.00

Note: The above table is for reference only. There may have some data bias for the uncontrollable factors. Contact us if you have any questions.

Payment Support

The payment method can be chosen from the methods shown below:
Wire Transfer (T/T, Bank Transfer), Western Union, Credit card, PayPal.



Your Faithful Supply Chain Partner -



Efficient Supply Management



Cost-Saving Procurement



Fast Sourcing & Delivery

Contact us if you have any questions.



Phone

+00852 9146 4856



Email

info@alleco.com

Certifications & Memberships



View More

Contact us

Address: Flat/Rm C 13/F Harvard Commercial Building 105-111 Thomson Road, Wan Chai, Hong Kong

Phone: +00852 9146 4856

Fax: +00852 3010 8510

Email: info@allelco.com

