



Image may be representation.
See specifications for product details.



VND7020AJTR

Manufacturer Part Number	VND7020AJTR
Manufacturer	STMicroelectronics
Allelco Part Number	32D-VND7020AJTR
ECAD Model	PCB Symbol, Footprint & 3D Mode
Parts Description	IC PWR DRVR N-CHAN 1:1 PWRSSO16
Package	16-PowerLFSOP (0.154', 3.90mm Width)
Data sheet	VND7020AJTR.pdf
RoHs Status	ROHS3 Compliant

[Get a Quote](#)

VND7020AJTR - STMicroelectronics.New Original in Stock. Download Linear Technology VND7020AJTR datasheet/specifications on AllelcoElec.com.
Request a quote for VND7020AJTR, please send us email: info@allelco.com

Specifications

VND7020AJTR Tech Specifications

VND7020AJTR - STMicroelectronics technical specifications, attributes, parameters

Product Attribute	Attribute Value	Product Attribute	Attribute Value
Manufacturer	STMicroelectronics	Output Configuration	High Side
Voltage - Supply (Vcc/Vdd)	Not Required	Operating Temperature	-40°C ~ 150°C (TJ)
Voltage - Load	4V ~ 28V	Number of Outputs	2
Switch Type	General Purpose	Mounting Type	Surface Mount
Supplier Device Package	PowerSSO-16	Interface	On/Off
Series	VIPower™	Input Type	Non-Inverting
Rds On (Typ)	22mOhm	Features	Auto Restart, Status Flag
Ratio - Input:Output	1:1	Fault Protection	Current Limiting (Fixed), Open Load Detect, Over Temperature, Over Voltage, UVLO
Package / Case	16-PowerLFSOP (0.154', 3.90mm Width)	Current - Output (Max)	45A
Package	Tape & Reel (TR)	Base Product Number	VND7020
Output Type	N-Channel		

Parts with Similar Specifications

The three parts on the right have similar specifications to STMicroelectronics VND7020AJTR

Product Attribute				
Part Number	VND7020AJTR	VND7140AJ12TR	VND7012AYTR	VND670SP
Manufacturer	STMicroelectronics	STMicroelectronics	STMicroelectronics	STMicroelectronics
Ratio - Input:Output	1:1	1:1	1:1	1:1
Supplier Device Package	PowerSSO-16	PowerSSO-12	PowerSSO-36 EPD	10-PowerSO
Interface	On/Off	On/Off	On/Off	On/Off
Series	VIPower™	VIPower™	Automotive, AEC-Q100, VIPOWER™	-
Package	Tape & Reel (TR)	Tape & Reel (TR)	Tape & Reel (TR)	Tube
Input Type	Non-Inverting	Non-Inverting	Non-Inverting	Non-Inverting
Switch Type	General Purpose	General Purpose	General Purpose	General Purpose
Package / Case	16-PowerLFSOP (0.154', 3.90mm Width)	12-PowerLSOP (0.154", 3.90mm Width)	36-PowerBFSOP (0.295', 7.50mm Width)	PowerSO-10 Exposed Bottom Pad
Mounting Type	Surface Mount	Surface Mount	Surface Mount	Surface Mount
Output Configuration	High Side	High Side	High Side	High Side
Number of Outputs	2	2	2	2
Rds On (Typ)	22mOhm	140mOhm	12mOhm	26mOhm
Voltage - Supply (Vcc/Vdd)	Not Required	Not Required	Not Required	Not Required
Operating Temperature	-40°C ~ 150°C (TJ)	-40°C ~ 150°C (TJ)	-40°C ~ 150°C (TJ)	-40°C ~ 150°C (TJ)
Fault Protection	Current Limiting (Fixed), Open Load Detect, Over Temperature, Over Voltage, UVLO	Current Limiting (Fixed), Open Load Detect, Over Temperature, Over Voltage, UVLO	Current Limiting (Fixed), Open Load Detect, Over Temperature, Over Voltage, UVLO	Current Limiting (Fixed), Over Temperature, Over Voltage
Base Product Number	VND7020	VND7140	VND7012	VND670
Features	Auto Restart, Status Flag	Auto Restart	Status Flag	PWM Input
Current - Output (Max)	45A	8A	60A	30A
Voltage - Load	4V ~ 28V	4V ~ 28V	4V ~ 28V	5.5V ~ 36V
Output Type	N-Channel	N-Channel	N-Channel	-

VND7020AJTR Datasheet PDF

Download VND7020AJTR pdf datasheets and STMicroelectronics documentation for VND7020AJTR - STMicroelectronics.

PCN Packaging

[Box Label Chg 28/Jul/2016.pdf](#)

[Material Barrier Bag 17/Dec/2020.pdf](#)

PCN Design/Specification

[Pkg Cavity ID Add 9/Mar/2017.pdf](#)

Customers Also Interested in

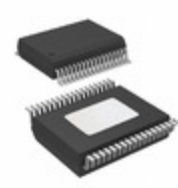
Recommended Products



VND7140AJ12TR
STMicroelectronics
IC PWR DRVR N-CHAN 1:1
PWRSSO12



VND7006DAYTR
STMicroelectronics



VND7012AYTR
STMicroelectronics
IC PWR DRVR N-CHAN 1:1
PWRSSO36



VND670SP
STMicroelectronics
IC PWR SWITCH 1:1 PWRSSO10



VND7020AJTR-E
STMicroelectronics
IC PWR DRVR N-CHAN 1:1
PWRSSO16



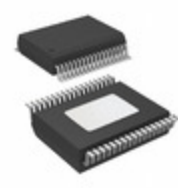
VND600TR-E
STMicroelectronics
IC PWR DRIVER N-CHANNEL 1:1
16SO



VND7050AJTR-E
STMicroelectronics
IC PWR DRVR N-CHAN 1:1
PWRSSO16



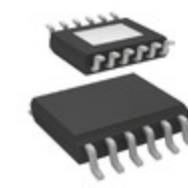
VND7030AJTR
STMicroelectronics
IC PWR DRVR N-CHAN 1:1
PWRSSO16



VND7012AYTR-E
STMicroelectronics
IC PWR DRVR N-CHAN 1:1
PWRSSO36



VND7040AJTR-E
STMicroelectronics
IC PWR DRVR N-CHAN 1:1
PWRSSO16



VND7050AJ12TR
STMicroelectronics
IC PWR DRVR N-CHAN 1:1
PWRSSO12



VND7030AJTR-E
STMicroelectronics
IC PWR DRVR N-CHAN 1:1
PWRSSO16



VND600SPTR-E
STMicroelectronics
IC PWR DRIVER N-CHAN 1:1
PWRSSO10



VND600SP13TR
STMicroelectronics
IC PWR DRIVER N-CHAN 1:1
PWRSSO10



VND7004AYTR-E
STMicroelectronics



VND7004AYTR
STMicroelectronics
IC PWR SWITCH N-CHAN 1:1
PWRSSO36



VND7040AJTR
STMicroelectronics
IC PWR DRVR N-CHAN 1:1
PWRSSO16



VND7050AJTR
STMicroelectronics
IC PWR DRVR N-CHAN 1:1
PWRSSO16

Shipment

Delivery Time

In-stock items can be shipped within 24 hours. Some parts will be arranged for delivery within 1-2 days from the date all items arrive at our warehouse. And Allelco ships order once a day at about 17:00, except Sunday. Once the goods are shipped, the estimated delivery time depends on the shipping methods and Delivery destination. The table below shows are the logistic time for some common countries.

Delivery Cost

- > Use your express account for shipment if you have one.
 - > Use our account for the shipment. Refer to the table below for the approximate charges.
- (Different time frame / countries / package size has different price.)

Delivery Method

- > Global Common Shipment by DHL / UPS / FedEx / TNT / EMS / SF we support.
- > Others more shipping ways, please get in touch with your customer manager.

Common Countries Logistic Time Reference

Region	Country	Logistic Time(Day)
America	United States	5
	Brazil	7
Europe	Germany	5
	United Kingdom	4
	Italy	5
Oceania	Australia	6
	New Zealand	7
Asia	India	6
	Japan	7
Middle East	Israel	6

DHL & FedEx Shipment Charges Reference

Shipment charges(KG)	Reference DHL(USD\$)
0.00kg-1.00kg	USD\$60.00
1.00kg-2.00kg	USD\$70.00
2.00kg-3.00kg	USD\$80.00

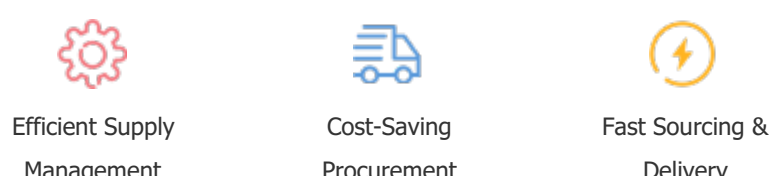
Note: The above table is for reference only. There may have some data bias for the uncontrollable factors.
Contact us if you have any questions.

Payment Support

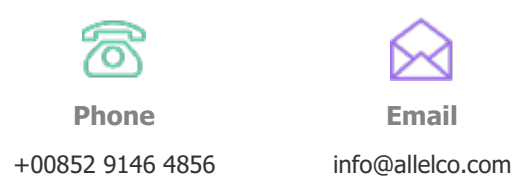
The payment method can be chosen from the methods shown below:
Wire Transfer (T/T, Bank Transfer), Western Union, Credit card, PayPal.



Your Faithful Supply Chain Partner -



Contact us if you have any questions.



Certifications & Memberships



View More