

Image may be representation.
See specifications for product details.



MAX1232CPA+

Manufacturer Part Number	MAX1232CPA+
Manufacturer	Maxim Integrated
Allelco Part Number	32D-MAX1232CPA+
ECAD Model	Request Free CAD Models
Parts Description	IC SUPERVISOR 1 CHANNEL 8DIP
Package	8-DIP (0.300", 7.62mm)
Data sheet	MAX1232.pdf
RoHs Status	ROHS3 Compliant

Get a Quote

MAX1232CPA+ - Analog Devices Inc./Maxim Integrated. New Original in Stock. Download Linear Technology MAX1232CPA+ datasheet/specifications on AllelcoElec.com. Request a quote for MAX1232CPA+, please send us email: info@allelco.com

Specifications

MAX1232CPA+ Tech Specifications

MAX1232CPA+ - Analog Devices Inc./Maxim Integrated technical specifications, attributes, parameters

Product Attribute	Attribute Value	Product Attribute	Attribute Value
Manufacturer	Maxim Integrated	Package / Case	8-DIP (0.300", 7.62mm)
Voltage - Threshold	4.37V, 4.62V	Package	Tube
Type	Simple Reset/Power-On Reset	Output	Open Drain or Open Collector
Supplier Device Package	8-PDIP	Operating Temperature	0°C ~ 70°C (TA)
Series	-	Number of Voltages Monitored	1
Reset Timeout	250ms Minimum	Mounting Type	Through Hole
Reset	Active High/Active Low	Base Product Number	MAX1232

Parts with Similar Specifications

The three parts on the right have similar specifications to Analog Devices Inc./Maxim Integrated MAX1232CPA+

Product Attribute				
Part Number	MAX1232CPA+	MAX1232CSA-T	MAX1232CSA+	MAX1232CPA
Manufacturer	Analog Devices Inc./Maxim Integrated	Analog Devices Inc./Maxim Integrated	Analog Devices Inc./Maxim Integrated	Analog Devices Inc./Maxim Integrated
Reset	Active High/Active Low	Active High/Active Low	Active High/Active Low	Active High/Active Low
Package / Case	8-DIP (0.300", 7.62mm)	8-SOIC (0.154", 3.90mm Width)	8-SOIC (0.154", 3.90mm Width)	8-DIP (0.300", 7.62mm)
Number of Voltages Monitored	1	1	1	1
Type	Simple Reset/Power-On Reset	Simple Reset/Power-On Reset	Simple Reset/Power-On Reset	Simple Reset/Power-On Reset
Operating Temperature	0°C ~ 70°C (TA)	0°C ~ 70°C (TA)	0°C ~ 70°C (TA)	0°C ~ 70°C (TA)
Supplier Device Package	8-PDIP	8-SOIC	8-SOIC	8-PDIP
Series	-	-	-	-
Output	Open Drain or Open Collector	Open Drain or Open Collector	Open Drain or Open Collector	Open Drain or Open Collector
Base Product Number	MAX1232	MAX1232	MAX1232	MAX1232
Voltage - Threshold	4.37V, 4.62V	4.37V, 4.62V	4.37V, 4.62V	4.37V, 4.62V
Reset Timeout	250ms Minimum	250ms Minimum	250ms Minimum	250ms Minimum
Package	Tube	Tape & Reel (TR)	Tube	Tube
Mounting Type	Through Hole	Surface Mount	Surface Mount	Through Hole

MAX1232CPA+ Datasheet PDF

Download MAX1232CPA+ pdf datasheets and Analog Devices Inc./Maxim Integrated documentation for MAX1232CPA+ - Analog Devices Inc./Maxim Integrated.

Datasheets

[MAX1232.pdf](#)

Environmental Information

[Maxim Integrated RoHS Cert.pdf](#)

[Material Declaration MAX1232CPA+.pdf](#)

Part Numbering Guide

[Part Numbering System.pdf](#)

Customers Also Interested in

Recommended Products

MAX1232CSA-T	MAX1232ECPA	MAX122BENG+	MAX1232CSA+	MAX1230BCTI+T	MAX1232CPA
Analog Devices Inc./Maxim Integrated	XINBOLE	Analog Devices Inc./Maxim Integrated	Analog Devices Inc./Maxim Integrated	Analog Devices / Maxim Integrated	Analog Devices Inc./Maxim Integrated
IC SUPERVISOR 1 CHANNEL 8SOIC		IC ADC 12BIT 333KSPS 24-DIP	IC SUPERVISOR 1 CHANNEL 8SOIC		IC SUPERVISOR 1 CHANNEL 8DIP



MAX1230BEEG+T

Analog Devices Inc./Maxim Integrated
IC ADC 12BIT SAR 24QSOP



MAX1232CWE

Analog Devices Inc./Maxim Integrated
IC SUPERVISOR 1 CHANNEL 16SOIC



MAX1232CSA+TR

Analog Devices / Maxim Integrated



MAX1231BCEG+

Analog Devices Inc./Maxim Integrated
IC ADC 12BIT SAR 24QSOP



MAX122BCNG+

Analog Devices Inc./Maxim Integrated
IC ADC 12BIT 333KSPS 24-DIP



MAX1232

XINBOLE



MAX1232CWE-T

Analog Devices / Maxim Integrated



MAX1232CSA

Analog Devices Inc./Maxim Integrated
IC SUPERVISOR 1 CHANNEL 8SOIC



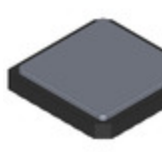
MAX1232CSA+T

Analog Devices Inc./Maxim Integrated
IC SUPERVISOR 1 CHANNEL 8SOIC



MAX1231BEEG+T

Analog Devices Inc./Maxim Integrated
IC ADC 12BIT SAR 24QSOP



MAX1230BETI

Analog Devices Inc./Maxim Integrated
12-BIT ADC WITH FIFO



MAX1231BCEG+T

Analog Devices Inc./Maxim Integrated
IC ADC 12BIT SAR 24QSOP

Shipment

Delivery Time

In-stock items can be shipped within 24 hours. Some parts will be arranged for delivery within 1-2 days from the date all items arrive at our warehouse. And Allelco ships order once a day at about 17:00, except Sunday. Once the goods are shipped, the estimated delivery time depends on the shipping methods and Delivery destination. The table below shows are the logistic time for some common countries.

Delivery Cost

> Use your express account for shipment if you have one.

> Use our account for the shipment. Refer to the table below for the approximate charges.

(Different time frame / countries / package size has different price.)

Delivery Method

> Global Common Shipment by DHL / UPS / FedEx / TNT / EMS / SF we support.

> Others more shipping ways, please get in touch with your customer manager.

Common Countries Logistic Time Reference		
Region	Country	Logistic Time(Day)
America	United States	5
	Brazil	7
Europe	Germany	5
	United Kingdom	4
	Italy	5
Oceania	Australia	6
	New Zealand	7
Asia	India	6
	Japan	7
Middle East	Israel	6

DHL & FedEx Shipment Charges Reference	
Shipment charges(KG)	Reference DHL(USD\$)
0.00kg-1.00kg	USD\$60.00
1.00kg-2.00kg	USD\$70.00
2.00kg-3.00kg	USD\$80.00

Note: The above table is for reference only. There may have some data bias for the uncontrollable factors.

Contact us if you have any questions.

Payment Support

The payment method can be chosen from the methods shown below:

Wire Transfer (T/T, Bank Transfer), Western Union, Credit card, PayPal.



Your Faithful Supply Chain Partner -



Efficient Supply Management



Cost-Saving Procurement



Fast Sourcing & Delivery

Contact us if you have any questions.



Phone

+00852 9146 4856



Email

info@allelco.com

Certifications & Memberships



View More



Contact us

Address: Flat/Rm C 13/F Harvard Commercial Building 105-111 Thomson Road, Wan Chai, Hong Kong

Phone: +00852 9146 4856

Fax: +00852 3010 8510

Email: info@allelco.com

Copyright © 2012-2023 AllelcoElec.com. All rights reserved.