



Image may be representation.
See specifications for product details.



DAP222T1G

Manufacturer Part Number	DAP222T1G
Manufacturer	onsemi
Allelco Part Number	32D-DAP222T1G
ECAD Model	Request Free CAD Models
Parts Description	DIODE ARRAY GP 80V 100MA SC75
Package	SC-75, SOT-416
Data sheet	DAP222, DAP202U.pdf
RoHs Status	ROHS3 Compliant

Get a Quote

DAP222T1G - onsemi.New Original in Stock. Download Linear Technology DAP222T1G datasheet/specifications on AllelcoElec.com.
Request a quote for DAP222T1G, please send us email: info@allelco.com

Specifications

DAP222T1G Tech Specifications

DAP222T1G - onsemi technical specifications, attributes, parameters

Product Attribute	Attribute Value	Product Attribute	Attribute Value
Manufacturer	onsemi	Package / Case	SC-75, SOT-416
Voltage - Forward (Vf) (Max) @ If	1.2 V @ 100 mA	Package	Tape & Reel (TR)
Voltage - DC Reverse (Vr) (Max)	80 V	Operating Temperature - Junction	150°C (Max)
Technology	Standard	Mounting Type	Surface Mount
Supplier Device Package	SC-75, SOT-416	Diode Configuration	1 Pair Common Anode
Speed	Small Signal =< 200mA (Io), Any Speed	Current - Reverse Leakage @ Vr	100 nA @ 70 V
Series	-	Current - Average Rectified (Io) (per Diode)	100mA (DC)
Reverse Recovery Time (trr)	10 ns	Base Product Number	DAP222

Parts with Similar Specifications

The three parts on the right have similar specifications to onsemi DAP222T1G

Product Attribute				
Part Number	DAP222T1G	DAP222T1	DAP222WMTL	DAP222TL
Manufacturer	onsemi	onsemi	Rohm Semiconductor	Rohm Semiconductor
Current - Reverse Leakage @ Vr	100 nA @ 70 V	100 nA @ 70 V	100 nA @ 70 V	100 nA @ 70 V
Voltage - Forward (Vf) (Max) @ If	1.2 V @ 100 mA	1.2 V @ 100 mA	1.2 V @ 100 mA	1.2 V @ 100 mA
Supplier Device Package	SC-75, SOT-416	SC-75, SOT-416	EMD3F	EMD3
Package	Tape & Reel (TR)	Tape & Reel (TR)	Tape & Reel (TR)	Tape & Reel (TR)
Voltage - DC Reverse (Vr) (Max)	80 V	80 V	80 V	80 V
Operating Temperature - Junction	150°C (Max)	150°C (Max)	150°C (Max)	150°C (Max)
Base Product Number	DAP222	DAP222	DAP222	DAP222
Reverse Recovery Time (trr)	10 ns	10 ns	4 ns	4 ns
Diode Configuration	1 Pair Common Anode	1 Pair Common Anode	1 Pair Common Anode	1 Pair Common Anode
Series	-	-	-	-
Package / Case	SC-75, SOT-416	SC-75, SOT-416	SC-89, SOT-490	SC-75, SOT-416
Mounting Type	Surface Mount	Surface Mount	Surface Mount	Surface Mount
Technology	Standard	Standard	Standard	Standard
Speed	Small Signal =< 200mA (Io), Any Speed	Small Signal =< 200mA (Io), Any Speed	Fast Recovery =< 500ns, > 200mA (Io)	Small Signal =< 200mA (Io), Any Speed
Current - Average Rectified (Io) (per Diode)	100mA (DC)	100mA (DC)	100mA	100mA

DAP222T1G Datasheet PDF

Download DAP222T1G pdf datasheets and onsemi documentation for DAP222T1G - onsemi.

Datasheets

[DAP222, DAP202U.pdf](#)

Environmental Information

[onsemi RoHS.pdf](#)

PCN Design/Specification

[Copper Wire 29/Oct/2009.pdf](#)

Customers Also Interested in

Recommended Products



DAP222/TR
LAPIS Technology



DAP222MGT2L
LAPIS Technology



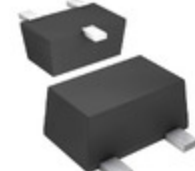
DAP222 G TL
LAPIS Technology



DAP236U
LAPIS Technology



DAP222T1
onsemi
DIODE ARRAY GP 80V 100MA SC75



DAP222WMTL
Rohm Semiconductor
DIODE ARRAY GP 80V 100MA EMD3



DAP236K
LAPIS Technology



DAP222 TL
LAPIS Technology



DAP222TL
Rohm Semiconductor
DIODE ARRAY GP 80V 100MA EMD3



DAP222G
onsemi
DIODE ARRAY GP 80V 100MA SC75



DAP236UT106
Rohm Semiconductor
RF DIODE STANDARD 35V 150MW UMD3



DAP236KT146
LAPIS Technology



DAP222MT2L
Rohm Semiconductor
DIODE ARRAY GP 80V 100MA VMD3



DAP222M T2L
LAPIS Technology



DAP601
RONH



DAP222M
LAPIS Technology



DAP236U T106
LAPIS Technology



DAP222
onsemi
DIODE ARRAY GP 80V 100MA SC75

Shipment

Delivery Time

In-stock items can be shipped within 24 hours. Some parts will be arranged for delivery within 1-2 days from the date all items arrive at our warehouse. And Alleco ships order once a day at about 17:00, except Sunday. Once the goods are shipped, the estimated delivery time depends on the shipping methods and Delivery destination. The table below shows are the logistic time for some common countries.

Delivery Cost

- > Use your express account for shipment if you have one.
 - > Use our account for the shipment. Refer to the table below for the approximate charges.
- (Different time frame / countries / package size has different price.)

Delivery Method

- > Global Common Shipment by DHL / UPS / FedEx / TNT / EMS / SF we support.
- > Others more shipping ways, please get in touch with your customer manager.

Common Countries Logistic Time Reference		
Region	Country	Logistic Time(Day)
America	United States	5
	Brazil	7
Europe	Germany	5
	United Kingdom	4
	Italy	5
Oceania	Australia	6
	New Zealand	7
Asia	India	6
	Japan	7
Middle East	Israel	6

DHL & FedEx Shipment Charges Reference	
Shipment charges(KG)	Reference DHL(USD\$)
0.00kg-1.00kg	USD\$60.00
1.00kg-2.00kg	USD\$70.00
2.00kg-3.00kg	USD\$80.00

Note: The above table is for reference only. There may have some data bias for the uncontrollable factors.
Contact us if you have any questions.

Payment Support

The payment method can be chosen from the methods shown below:
Wire Transfer (T/T, Bank Transfer), Western Union, Credit card, PayPal.



Your Faithful Supply Chain Partner -

- Efficient Supply Management
- Cost-Saving Procurement
- Fast Sourcing & Delivery

Contact us if you have any questions.

- Phone
+00852 9146 4856
- Email
info@alleco.com

Certifications & Memberships



[View More](#)