



Image may be representation.
See specifications for product details.



EP2C8T144C8

Manufacturer Part Number	EP2C8T144C8
Manufacturer	Intel
Allelco Part Number	32D-EP2C8T144C8
ECAD Model	Request Free CAD Models
Parts Description	IC FPGA 85 I/O 144TQFP
Package	144-LQFP
Data sheet	Virtual JTAG Megafuntion Guide.pdf

Get a Quote

EP2C8T144C8 - Intel.New Original in Stock. Download Linear Technology EP2C8T144C8 datasheet/specifications on AllelcoElec.com.
Request a quote for EP2C8T144C8, please send us email: info@allelco.com

Specifications

EP2C8T144C8 Tech Specifications
EP2C8T144C8 - Intel technical specifications, attributes, parameters

Product Attribute	Attribute Value	Product Attribute	Attribute Value
Manufacturer	Intel	Operating Temperature	0°C ~ 85°C (TJ)
Voltage - Supply	1.15V ~ 1.25V	Number of Logic Elements/Cells	8256
Total RAM Bits	165888	Number of LABs/CLBs	516
Supplier Device Package	144-TQFP (20x20)	Number of I/O	85
Series	Cyclone® II	Mounting Type	Surface Mount
Package / Case	144-LQFP	Base Product Number	EP2C8
Package	Tray		

Parts with Similar Specifications

The three parts on the right have similar specifications to Intel EP2C8T144C8

Product Attribute				
Part Number	EP2C8T144C8	EP2C8Q208C8N	EP2S130F1020C3	EP2C8T144C7
Manufacturer	Intel	Intel	Altera	Intel
Mounting Type	Surface Mount	Surface Mount	Surface Mount	Surface Mount
Package	Tray	Tray	Bulk	Tray
Number of Logic Elements/Cells	8256	8256	-	8256
Voltage - Supply	1.15V ~ 1.25V	1.15V ~ 1.25V	1.15V ~ 1.25V	1.15V ~ 1.25V
Supplier Device Package	144-TQFP (20x20)	208-PQFP (28x28)	1020-FBGA (33x33)	144-TQFP (20x20)
Operating Temperature	0°C ~ 85°C (TJ)	0°C ~ 85°C (TJ)	0°C ~ 85°C (TJ)	0°C ~ 85°C (TJ)
Number of I/O	85	138	742	85
Number of LABs/CLBs	516	516	-	516
Total RAM Bits	165888	165888	-	165888
Package / Case	144-LQFP	208-BFQFP	1020-BBGA	144-LQFP
Base Product Number	EP2C8	EP2C8	EP2S130	EP2C8
Series	Cyclone® II	Cyclone® II	Stratix® II	Cyclone® II

EP2C8T144C8 Datasheet PDF

Download EP2C8T144C8 pdf datasheets and Intel documentation for EP2C8T144C8 - Intel.

Datasheets

[Virtual JTAG Megafuntion Guide.pdf](#)

PCN Design/Specification

[Cylindrical Battery Holders.pdf](#)

PCN Packaging

[Mult Dev Label CHG 24/Jan/2020.pdf](#)

[Mult Dev Label Chgs 24/Feb/2020.pdf](#)

Customers Also Interested in

Recommended Products



EP2CT32N
Altera (Intel)



EP2C8Q208C8N
Intel
IC FPGA 138 I/O 208QFP



EP2C8Q208C6N
Altera (Intel)



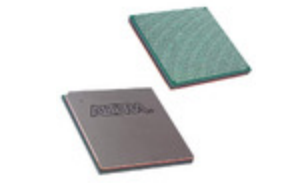
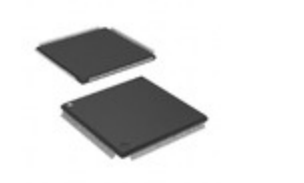
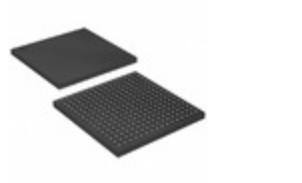
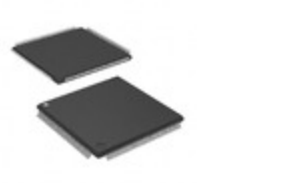
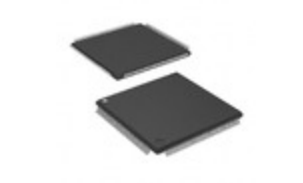
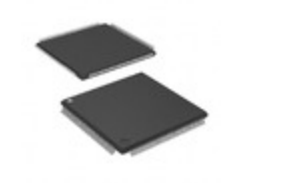
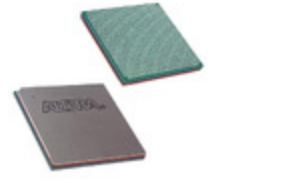
EP2S130F1020C3
Altera
IC FPGA 742 I/O 1020FBGA



EP2C8T144C7
Intel
IC FPGA 85 I/O 144TQFP



EP2C8T144C7N
Intel
IC FPGA 85 I/O 144TQFP

**EP2S130F1020C3**Intel
IC FPGA 742 I/O 1020FBGA**EP2C8T144C6N**Intel
IC FPGA 85 I/O 144TQFP**EP2C8Q208I8**Intel
IC FPGA 138 I/O 208QFP**EP2C8T144C6**Intel
IC FPGA 85 I/O 144TQFP**EP2C8F256I8N**Intel
IC FPGA 182 I/O 256FBGA**EP2C8T144I8N**Intel
IC FPGA 85 I/O 144TQFP**EP2C8T144I8**Intel
IC FPGA 85 I/O 144TQFP**EP2S130F1020C3N**Intel
IC FPGA 742 I/O 1020FBGA**EP2C8Q208C7N**Intel
IC FPGA 138 I/O 208QFP**EP2C8T144C8N**Intel
IC FPGA 85 I/O 144TQFP**EP2S130F1020C4N**Intel
IC FPGA 742 I/O 1020FBGA**EP2C8Q208I8N**Intel
IC FPGA 138 I/O 208QFP

Shipment

Delivery Time

In-stock items can be shipped within 24 hours. Some parts will be arranged for delivery within 1-2 days from the date all items arrive at our warehouse. And Allelco ships order once a day at about 17:00, except Sunday. Once the goods are shipped, the estimated delivery time depends on the shipping methods and Delivery destination. The table below shows are the logistic time for some common countries.

Delivery Cost

> Use your express account for shipment if you have one.

> Use our account for the shipment. Refer to the table below for the approximate charges.

(Different time frame / countries / package size has different price.)

Delivery Method

> Global Common Shipment by DHL / UPS / FedEx / TNT / EMS / SF we support.

> Others more shipping ways, please get in touch with your customer manager.

Common Countries Logistic Time Reference		
Region	Country	Logistic Time(Day)
America	United States	5
	Brazil	7
Europe	Germany	5
	United Kingdom	4
	Italy	5
Oceania	Australia	6
	New Zealand	7
Asia	India	6
	Japan	7
Middle East	Israel	6

DHL & FedEx Shipment Charges Reference	
Shipment charges(KG)	Reference DHL(USD\$)
0.00kg-1.00kg	USD\$60.00
1.00kg-2.00kg	USD\$70.00
2.00kg-3.00kg	USD\$80.00

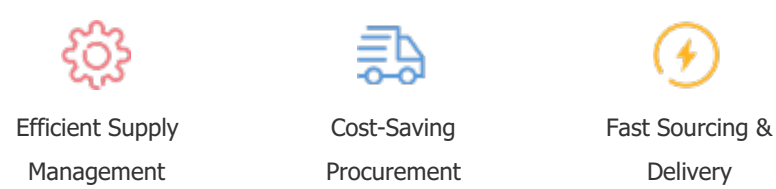
Note: The above table is for reference only. There may have some data bias for the uncontrollable factors.
Contact us if you have any questions.

Payment Support

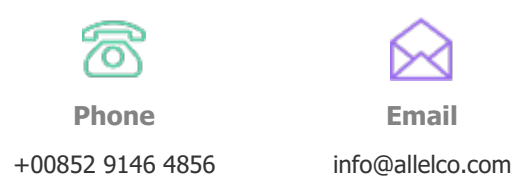
The payment method can be chosen from the methods shown below:
Wire Transfer (T/T, Bank Transfer), Western Union, Credit card, PayPal.



Your Faithful Supply Chain Partner -



Contact us if you have any questions.



Certifications & Memberships



[View More](#)



Contact us

Address: Flat/Rm C 13/F Harvard Commercial Building 105-111 Thomson Road, Wan Chai, Hong Kong

Phone: +00852 9146 4856

Fax: +00852 3010 8510

Email: info@Allelco.com

Copyright © 2012-2023 AllelcoElec.com. All rights reserved.