

Image may be representation.
See specifications for product details.



EP1S80F1020C6

Manufacturer Part Number	EP1S80F1020C6
Manufacturer	Intel
Allelco Part Number	32D-EP1S80F1020C6
ECAD Model	Request Free CAD Models
Parts Description	IC FPGA 773 I/O 1020FBGA
Package	1020-BBGA
Data sheet	Virtual JTAG Megafuntion Guide.pdf 896-FBGA Pkg Info.pdf Stratix Device Datasheet.pdf Stratix Device Handbook.pdf

Get a Quote

EP1S80F1020C6 - Intel.New Original in Stock. Download Linear Technology EP1S80F1020C6 datasheet/specifications on AllelcoElec.com.
Request a quote for EP1S80F1020C6, please send us email: info@allelco.com

Specifications

EP1S80F1020C6 Tech Specifications
EP1S80F1020C6 - Intel technical specifications, attributes, parameters

Product Attribute	Attribute Value	Product Attribute	Attribute Value
Manufacturer	Intel	Operating Temperature	0°C ~ 85°C (TJ)
Voltage - Supply	1.425V ~ 1.575V	Number of Logic Elements/Cells	79040
Total RAM Bits	7427520	Number of LABs/CLBs	7904
Supplier Device Package	1020-FBGA (33x33)	Number of I/O	773
Series	Stratix®	Mounting Type	Surface Mount
Package / Case	1020-BBGA	Base Product Number	EP1S80
Package	Tray		

Parts with Similar Specifications

The three parts on the right have similar specifications to Intel EP1S80F1020C6

Product Attribute				
Part Number	EP1S80F1020C6	EP1S60F1020I6	EP1S80F1020I7N	EP1S80F1020C5
Manufacturer	Intel	Intel	Intel	Altera
Series	Stratix®	Stratix®	Stratix®	Stratix®
Mounting Type	Surface Mount	Surface Mount	Surface Mount	Surface Mount
Package	Tray	Tray	Tray	Bulk
Number of Logic Elements/Cells	79040	57120	79040	79040
Operating Temperature	0°C ~ 85°C (TJ)	-40°C ~ 100°C (TJ)	-40°C ~ 100°C (TJ)	0°C ~ 85°C (TJ)
Package / Case	1020-BBGA	1020-BBGA	1020-BBGA	1020-BBGA, FCBGA
Voltage - Supply	1.425V ~ 1.575V	1.425V ~ 1.575V	1.425V ~ 1.575V	1.425V ~ 1.575V
Total RAM Bits	7427520	5215104	7427520	7427520
Base Product Number	EP1S80	EP1S60	EP1S80	-
Number of I/O	773	773	773	773
Number of LABs/CLBs	7904	5712	7904	7904
Supplier Device Package	1020-FBGA (33x33)	1020-FBGA (33x33)	1020-FBGA (33x33)	1020-FBGA (33x33)

EP1S80F1020C6 Datasheet PDF

Download EP1S80F1020C6 pdf datasheets and Intel documentation for EP1S80F1020C6 - Intel.

Datasheets

Virtual JTAG Megafuntion Guide.pdf

896-FBGA Pkg Info.pdf

Stratix Device Datasheet.pdf

Stratix Device Handbook.pdf

PCN Packaging

All Dev Pkg Chg 1/Aug/2018.pdf

Mult Dev Dessicant Chg 19/Jul/2019.pdf

PCN Design/Specification

Mult Series Software Chgs 26/Mar/2020.pdf

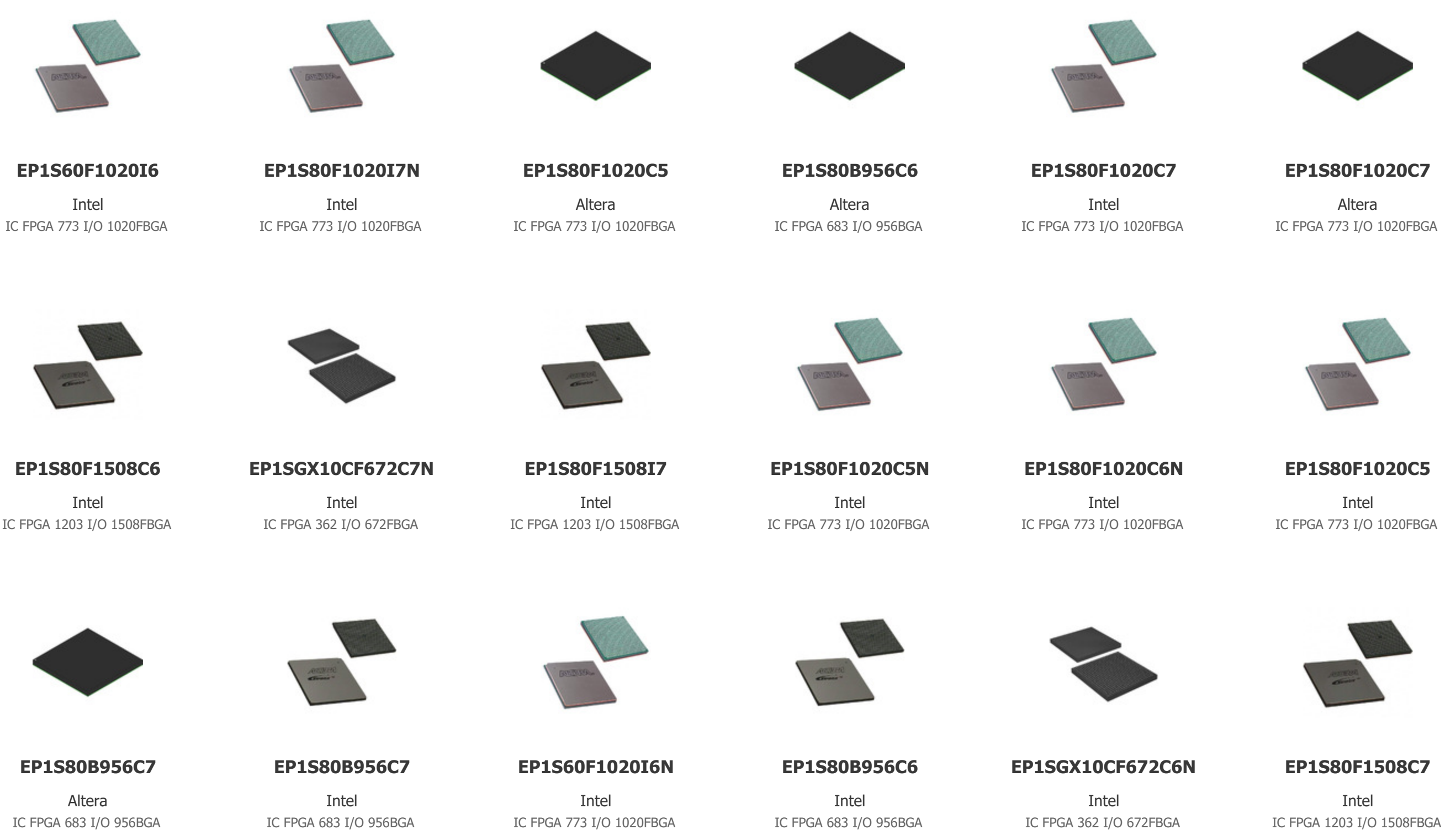
Package Height 03/March/2008.pdf

PCN Obsolescence/ EOL

Cylindrical Battery Holders.pdf

Customers Also Interested in

Recommended Products



Shipment

Delivery Time

In-stock items can be shipped within 24 hours. Some parts will be arranged for delivery within 1-2 days from the date all items arrive at our warehouse. And Allelco ships order once a day at about 17:00, except Sunday. Once the goods are shipped, the estimated delivery time depends on the shipping methods and Delivery destination. The table below shows are the logistic time for some common countries.

Delivery Cost

- > Use your express account for shipment if you have one.
 - > Use our account for the shipment. Refer to the table below for the approximate charges.
- (Different time frame / countries / package size has different price.)

Delivery Method

- > Global Common Shipment by DHL / UPS / FedEx / TNT / EMS / SF we support.
- > Others more shipping ways, please get in touch with your customer manager.

Common Countries Logistic Time Reference		
Region	Country	Logistic Time(Day)
America	United States	5
	Brazil	7
Europe	Germany	5
	United Kingdom	4
	Italy	5
Oceania	Australia	6
	New Zealand	7
Asia	India	6
	Japan	7
Middle East	Israel	6

DHL & FedEx Shipment Charges Reference	
Shipment charges(KG)	Reference DHL(USD\$)
0.00kg-1.00kg	USD\$60.00
1.00kg-2.00kg	USD\$70.00
2.00kg-3.00kg	USD\$80.00

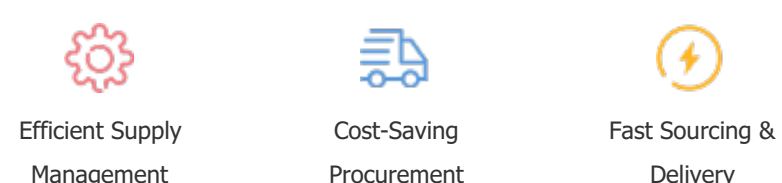
Note: The above table is for reference only. There may have some data bias for the uncontrollable factors.
Contact us if you have any questions.

Payment Support

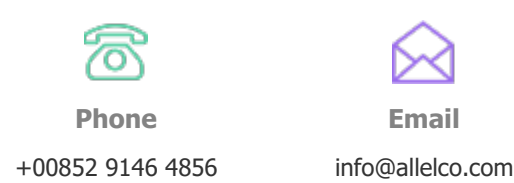
The payment method can be chosen from the methods shown below:
Wire Transfer (T/T, Bank Transfer), Western Union, Credit card, PayPal.



Your Faithful Supply Chain Partner -



Contact us if you have any questions.



Certifications & Memberships



[View More](#)