

Image may be representation.  
See specifications for product details.



## 10CL080YU484C8G

Manufacturer Part Number **10CL080YU484C8G**

Manufacturer **Intel**

Allelco Part Number **32D-10CL080YU484C8G**

ECAD Model PCB Symbol, Footprint & 3D Mode

Parts Description **IC FPGA 289 I/O 484UBGA**

Package **484-UBGA**

Data sheet [Cyclone 10 LP Devices Overview.pdf](#)

[Cyclone® 10 LP Device Datasheet.pdf](#)

RoHs Status **RoHS Compliant**

[Get a Quote](#)

10CL080YU484C8G - Intel.New Original in Stock. Download Linear Technology 10CL080YU484C8G datasheet/specifications on AllelcoElec.com.  
Request a quote for 10CL080YU484C8G, please send us email: [info@allelco.com](mailto:info@allelco.com)

### Specifications

10CL080YU484C8G Tech Specifications  
10CL080YU484C8G - Intel technical specifications, attributes, parameters

Product Attribute	Attribute Value	Product Attribute	Attribute Value
Manufacturer	Intel	Package	Tray
Voltage - Supply	1.2V	Operating Temperature	0°C ~ 85°C (TJ)
Total RAM Bits	2810880	Number of Logic Elements/Cells	81264
Supplier Device Package	484-UBGA (19x19)	Number of LABs/CLBs	5079
Series	Cyclone® 10 LP	Number of I/O	289
Package / Case	484-UBGA	Mounting Type	Surface Mount

### Parts with Similar Specifications

The three parts on the right have similar specifications to Intel 10CL080YU484C8G

Product Attribute				
Part Number	10CL080YU484C8G	10CL055YF484C8G	10CL055YF484I7G	10CL040YU484C8G
Manufacturer	Intel	Intel	Intel	Intel
Mounting Type	Surface Mount	Surface Mount	Surface Mount	Surface Mount
Number of I/O	289	321	321	325
Number of Logic Elements/Cells	81264	55856	55856	39600
Total RAM Bits	2810880	2396160	2396160	1161216
Operating Temperature	0°C ~ 85°C (TJ)	0°C ~ 85°C (TJ)	-40°C ~ 100°C (TJ)	0°C ~ 85°C (TJ)
Supplier Device Package	484-UBGA (19x19)	484-FBGA (23x23)	484-FBGA (23x23)	484-UBGA (19x19)
Voltage - Supply	1.2V	1.2V	1.2V	1.2V
Number of LABs/CLBs	5079	3491	3491	2475
Package	Tray	Tray	Tray	Tray
Series	Cyclone® 10 LP	Cyclone® 10 LP	Cyclone® 10 LP	Cyclone® 10 LP
Package / Case	484-UBGA	484-BGA	484-BGA	484-FBGA

### 10CL080YU484C8G Datasheet PDF

Download 10CL080YU484C8G pdf datasheets and Intel documentation for 10CL080YU484C8G - Intel.

#### Datasheets

- [Cyclone 10 LP Devices Overview.pdf](#)
- [Cyclone® 10 LP Device Datasheet.pdf](#)

#### PCN Design/Specification

- [Arria/Cyclone 10 Software Chg 3/Jun/2021.pdf](#)
- [Mult Dev Software Rev 28/May/2021.pdf](#)

#### PCN Packaging

- [Mult Dev Label CHG 24/Jan/2020.pdf](#)
- [Mult Dev Label Chgs 24/Feb/2020.pdf](#)

### Customers Also Interested in

#### Recommended Products

- 10CL055YF484C8G**  
Intel  
IC FPGA 321 I/O 484FBGA
- 10CL3-202200-21R**  
Panasonic
- 10CL055YF484I7G**  
Intel  
IC FPGA 321 I/O 484FBGA
- 10CL040YU484C8G**  
Intel  
IC FPGA 325 I/O 484UBGA
- 10CL3-203300-11**  
AMI Semiconductor/onsemi
- 10CL055ZU484I8G**  
Intel  
IC FPGA 321 I/O 484UBGA



**10CL080ZU484I8G**  
Intel  
IC FPGA 289 I/O 484UBGA



**10CL080YU484A7G**  
Intel  
IC FPGA 289 I/O 484UBGA



**10CL055YU484C8G**  
Intel  
IC FPGA 321 I/O 484UBGA



**10CL120YF780I7G**  
Intel  
IC FPGA 525 I/O 780FBGA



**10CL120YF484I7G**  
Intel  
IC FPGA 277 I/O 484FBGA



**10CL040ZF484I8G**  
Intel  
IC FPGA 325 I/O 484FBGA



**10CL120ZF484I8G**  
Intel  
IC FPGA 277 I/O 484FBGA



**10CL080YF780C8G**  
Intel  
IC FPGA 423 I/O 780FBGA



**10CL080YF484C8G**  
Intel  
IC FPGA 289 I/O 484FBGA



**10CL040YU484I7G**  
Intel  
IC FPGA 325 I/O 484UBGA



**10CL3-062200-11R**  
AMI Semiconductor/onsemi



**10CL080YU484I7G**  
Intel  
IC FPGA 289 I/O 484UBGA

## Shipment

### Delivery Time

In-stock items can be shipped within 24 hours. Some parts will be arranged for delivery within 1-2 days from the date all items arrive at our warehouse. And Allelco ships order once a day at about 17:00, except Sunday. Once the goods are shipped, the estimated delivery time depends on the shipping methods and Delivery destination. The table below shows are the logistic time for some common countries.

### Delivery Cost

> Use your express account for shipment if you have one.

> Use our account for the shipment. Refer to the table below for the approximate charges.

(Different time frame / countries / package size has different price.)

### Delivery Method

> Global Common Shipment by DHL / UPS / FedEx / TNT / EMS / SF we support.

> Others more shipping ways, please get in touch with your customer manager.

Common Countries Logistic Time Reference		
Region	Country	Logistic Time(Day)
America	United States	5
	Brazil	7
Europe	Germany	5
	United Kingdom	4
	Italy	5
Oceania	Australia	6
	New Zealand	7
Asia	India	6
	Japan	7
Middle East	Israel	6

DHL & FedEx Shipment Charges Reference	
Shipment charges(KG)	Reference DHL(USD\$)
0.00kg-1.00kg	USD\$60.00
1.00kg-2.00kg	USD\$70.00
2.00kg-3.00kg	USD\$80.00

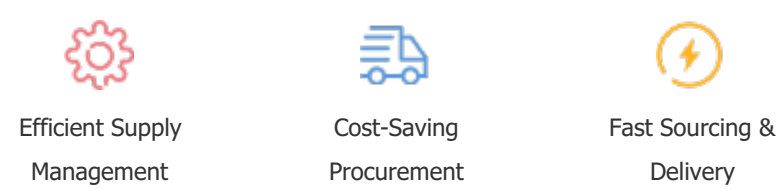
Note: The above table is for reference only. There may have some data bias for the uncontrollable factors.  
Contact us if you have any questions.

## Payment Support

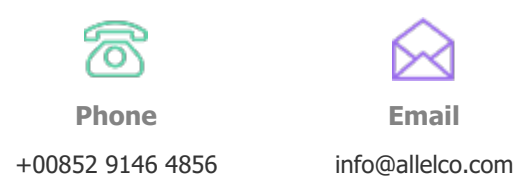
The payment method can be chosen from the methods shown below:  
Wire Transfer (T/T, Bank Transfer), Western Union, Credit card, PayPal.



## Your Faithful Supply Chain Partner -



Contact us if you have any questions.



## Certifications & Memberships



[View More](#)