

Image may be representation.  
See specifications for product details.



## OP200AZ

Manufacturer Part Number	<b>OP200AZ</b>
Manufacturer	<b>Analog Devices, Inc.</b>
Allelco Part Number	32D-OP200AZ
ECAD Model	PCB Symbol, Footprint & 3D Model
Parts Description	IC OPAMP GP 2 CIRCUIT 8CERDIP
Package	8-CDIP (0.300", 7.62mm)
Data sheet	<b>OP200.pdf</b>
RoHs Status	<b>ROHS3 Compliant</b>

**Get a Quote**

OP200AZ - Analog Devices Inc..New Original in Stock. Download Linear Technology OP200AZ datasheet/specifications on AllelcoElec.com.  
Request a quote for OP200AZ, please send us email: [info@allelco.com](mailto:info@allelco.com)

### Specifications

OP200AZ Tech Specifications  
OP200AZ - Analog Devices Inc. technical specifications, attributes, parameters

Product Attribute	Attribute Value	Product Attribute	Attribute Value
Manufacturer	Analog Devices, Inc.	Output Type	-
Voltage - Supply Span (Min)	6 V	Operating Temperature	-55°C ~ 125°C
Voltage - Supply Span (Max)	36 V	Number of Circuits	2
Voltage - Input Offset	25 µV	Mounting Type	Through Hole
Supplier Device Package	8-CERDIP	Gain Bandwidth Product	500 kHz
Slew Rate	0.15V/µs	Current - Supply	570µA (x2 Channels)
Series	-	Current - Input Bias	100 pA
Package / Case	8-CDIP (0.300", 7.62mm)	Base Product Number	OP200
Package	Tube	Amplifier Type	General Purpose

### Parts with Similar Specifications

The three parts on the right have similar specifications to Analog Devices Inc. OP200AZ

Product Attribute				
Part Number	OP200AZ	OP200GPZ	OP200EZ	OP200GSZ
Manufacturer	Analog Devices Inc.	Analog Devices Inc.	Analog Devices Inc.	Analog Devices Inc.
Current - Input Bias	100 pA	100 pA	100 pA	100 pA
Package / Case	8-CDIP (0.300", 7.62mm)	8-DIP (0.300", 7.62mm)	8-CDIP (0.300", 7.62mm)	16-SOIC (0.295", 7.50mm Width)
Supplier Device Package	8-CERDIP	8-PDIP	8-CERDIP	16-SOIC
Mounting Type	Through Hole	Through Hole	Through Hole	Surface Mount
Number of Circuits	2	2	2	2
Gain Bandwidth Product	500 kHz	500 kHz	500 kHz	500 kHz
Current - Supply	570µA (x2 Channels)	570µA (x2 Channels)	570µA (x2 Channels)	570µA (x2 Channels)
Operating Temperature	-55°C ~ 125°C	-40°C ~ 85°C	-40°C ~ 85°C	-40°C ~ 85°C
Base Product Number	OP200	OP200	OP200	OP200
Amplifier Type	General Purpose	General Purpose	General Purpose	General Purpose
Voltage - Supply Span (Min)	6 V	6 V	6 V	6 V
Output Type	-	-	-	-
Voltage - Input Offset	25 µV	80 µV	25 µV	80 µV
Series	-	-	-	-
Voltage - Supply Span (Max)	36 V	36 V	36 V	36 V
Slew Rate	0.15V/µs	0.15V/µs	0.15V/µs	0.15V/µs
Package	Tube	Tube	Tube	Tube

### OP200AZ Datasheet PDF

Download OP200AZ pdf datasheets and Analog Devices Inc. documentation for OP200AZ - Analog Devices Inc..

#### Datasheets

[OP200.pdf](#)

#### PCN Assembly/Origin

[Mult Dev Test Site Rev 29/Oct/2017.pdf](#)

### Customers Also Interested in

#### Recommended Products

**OP200ARC**

ADI (Analog Devices, Inc.)

**OP200AZ/883Q**

ADI (Analog Devices, Inc.)

**OP20CZ**

ADI (Analog Devices, Inc.)

**OP20-22**

ADI (Analog Devices, Inc.)

**OP200AZ/883B**

ADI (Analog Devices, Inc.)

**OP207EY**

ADI (Analog Devices, Inc.)

**OP200GPZ**Analog Devices Inc.  
IC OPAMP GP 2 CIRCUIT 8DIP**OP200G**

IMP

**OP200AZ/883**

ADI (Analog Devices, Inc.)

**OP200EZ**Analog Devices Inc.  
IC OPAMP GP 2 CIRCUIT 8CERDIP**OP200GSZ**Analog Devices Inc.  
IC OPAMP GP 2 CIRCUIT 16SOIC**OP200AZ/883C**

ADI (Analog Devices, Inc.)

**OP207AY**

ADI (Analog Devices, Inc.)

**OP207AY/883**

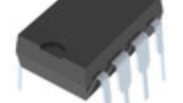
ADI (Analog Devices, Inc.)

**OP200AZ/8835962-8859301MPA**

ADI (Analog Devices, Inc.)

**OP200FZ**

IMP

**OP200GS**Analog Devices Inc.  
IC OPAMP GP 2 CIRCUIT 16SOIC**OP200GP**Analog Devices Inc.  
IC OPAMP GP 500KHZ DUAL LP 8DIP

## Shipment

### Delivery Time

In-stock items can be shipped within 24 hours. Some parts will be arranged for delivery within 1-2 days from the date all items arrive at our warehouse. And Allelco ships order once a day at about 17:00, except Sunday. Once the goods are shipped, the estimated delivery time depends on the shipping methods and Delivery destination. The table below shows are the logistic time for some common countries.

### Delivery Cost

> Use your express account for shipment if you have one.

> Use our account for the shipment. Refer to the table below for the approximate charges.

(Different time frame / countries / package size has different price.)

### Delivery Method

> Global Common Shipment by DHL / UPS / FedEx / TNT / EMS / SF we support.

> Others more shipping ways, please get in touch with your customer manager.

Common Countries Logistic Time Reference		
Region	Country	Logistic Time(Day)
America	United States	5
	Brazil	7
Europe	Germany	5
	United Kingdom	4
	Italy	5
Oceania	Australia	6
	New Zealand	7
Asia	India	6
	Japan	7
Middle East	Israel	6

DHL & FedEx Shipment Charges Reference	
Shipment charges(KG)	Reference DHL(USD\$)
0.00kg-1.00kg	USD\$60.00
1.00kg-2.00kg	USD\$70.00
2.00kg-3.00kg	USD\$80.00

Note: The above table is for reference only. There may have some data bias for the uncontrollable factors.

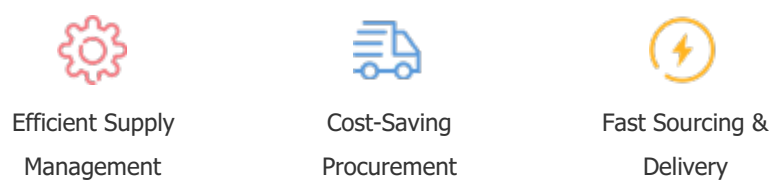
Contact us if you have any questions.

### Payment Support

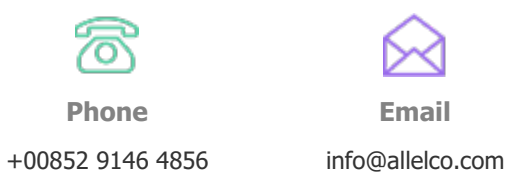
The payment method can be chosen from the methods shown below:  
Wire Transfer (T/T, Bank Transfer), Western Union, Credit card,  
PayPal.



### Your Faithful Supply Chain Partner -



Contact us if you have any questions.



### Certifications & Memberships



[View More](#)