

Image may be representation.
See specifications for product details.



AD5243BRMZ50

Manufacturer Part Number	AD5243BRMZ50
Manufacturer	Analog Devices, Inc.
Allelco Part Number	32D-AD5243BRMZ50
ECAD Model	PCB Symbol, Footprint & 3D Model
Parts Description	IC DCTL POT 50KOHM 256TAP 10MSOP
Package	10-TFSOP, 10-MSOP (0.118", 3.00mm Width)
Data sheet	Cylindrical Battery Holders.pdf
RoHs Status	ROHS3 Compliant

Get a Quote

AD5243BRMZ50 - Analog Devices Inc..New Original in Stock. Download Linear Technology AD5243BRMZ50 datasheet/specifications on AllelcoElec.com.
Request a quote for AD5243BRMZ50, please send us email: info@allelco.com

Specifications

AD5243BRMZ50 Tech Specifications
AD5243BRMZ50 - Analog Devices Inc. technical specifications, attributes, parameters

Product Attribute	Attribute Value	Product Attribute	Attribute Value
Manufacturer	Analog Devices, Inc.	Package	Tube
Voltage - Supply	2.7V ~ 5.5V	Operating Temperature	-40°C ~ 125°C
Tolerance	-20%, +55%	Number of Taps	256
Temperature Coefficient (Typ)	35ppm/°C	Number of Circuits	2
Taper	Linear	Mounting Type	Surface Mount
Supplier Device Package	10-MSOP	Memory Type	Volatile
Series	-	Interface	I ² C
Resistance - Wiper (Ohms) (Typ)	160	Features	-
Resistance (Ohms)	50k	Configuration	Potentiometer
Package / Case	10-TFSOP, 10-MSOP (0.118", 3.00mm Width)	Base Product Number	AD5243

Parts with Similar Specifications

The three parts on the right have similar specifications to Analog Devices Inc. AD5243BRMZ50

Product Attribute				
Part Number	AD5243BRMZ50	AD5243BRMZ2.5	AD5242BRZ100-REEL7	AD5243BRMZ10
Manufacturer	Analog Devices Inc.	Analog Devices Inc.	Analog Devices Inc.	Analog Devices Inc.
Features	-	-	Selectable Address	-
Interface	I ² C	I ² C	I ² C	I ² C
Resistance (Ohms)	50k	2.5k	100k	10k
Supplier Device Package	10-MSOP	10-MSOP	16-SOIC	10-MSOP
Voltage - Supply	2.7V ~ 5.5V	2.7V ~ 5.5V	2.7V ~ 5.5V, ±2.3V ~ 2.7V	2.7V ~ 5.5V
Taper	Linear	Linear	Linear	Linear
Package / Case	10-TFSOP, 10-MSOP (0.118", 3.00mm Width)	10-TFSOP, 10-MSOP (0.118", 3.00mm Width)	16-SOIC (0.154", 3.90mm Width)	10-TFSOP, 10-MSOP (0.118", 3.00mm Width)
Temperature Coefficient (Typ)	35ppm/°C	35ppm/°C	30ppm/°C	35ppm/°C
Base Product Number	AD5243	AD5243	AD5242	AD5243
Mounting Type	Surface Mount	Surface Mount	Surface Mount	Surface Mount
Series	-	-	-	-
Number of Taps	256	256	256	256
Tolerance	-20%, +55%	-20%, +55%	-30%, +50%	-20%, +55%
Configuration	Potentiometer	Potentiometer	Potentiometer	Potentiometer
Resistance - Wiper (Ohms) (Typ)	160	160	60	160
Package	Tube	Tube	Tape & Reel (TR)	Tube
Operating Temperature	-40°C ~ 125°C	-40°C ~ 125°C	-40°C ~ 105°C	-40°C ~ 125°C
Memory Type	Volatile	Volatile	Volatile	Volatile
Number of Circuits	2	2	2	2

AD5243BRMZ50 Datasheet PDF

Download AD5243BRMZ50 pdf datasheets and Analog Devices Inc. documentation for AD5243BRMZ50 - Analog Devices Inc..

Datasheets



[Cylindrical Battery Holders.pdf](#)

PCN Assembly/Origin

[2.73KHz.pdf](#)

Customers Also Interested in

Recommended Products

 AD5243BRMZ2.5 Analog Devices Inc. IC DGT POT 2.5KOHM 256TAP 10MSOP	 AD5245BRJ50 ADI (Analog Devices, Inc.)	 AD5242BRZ100-REEL7 Analog Devices Inc. IC DGT POT 100KOHM 256TAP 16SOIC	 AD5243BRMZ10 Analog Devices Inc. IC DGTL POT 10KOHM 256TAP 10MSOP	 AD5245BRJ10-R2 ADI (Analog Devices, Inc.)	 AD5245BRJ100-RL7 ADI (Analog Devices, Inc.)
 AD5243 ADI (Analog Devices, Inc.)	 AD5242BRZ1M Analog Devices Inc. IC DGTL POT 1MOHM 256TAP 16SOIC	 AD5245BRJ10-RL7 Analog Devices Inc. IC POT DGTL 10K 256POS SOT23-8	 AD5243BRMZ2.5 Analog Devices Inc. IC DGT POT 2.5KOHM 256TAP 10MSOP	 AD5243BRMZ50-RL7 Analog Devices Inc. IC DGTL POT 50KOHM 256TAP 10MSOP	 AD5245BRJ5 ADI (Analog Devices, Inc.)
 AD5243BRMZ100-RL7 Analog Devices Inc. IC DGT POT 100KOHM 256TAP 10MSOP	 AD5245BRJ5-RL7 Analog Devices Inc. IC DGTL POT 256POS SOT-23-8 T/R	 AD5243BRM10 Analog Devices Inc. IC DGTL POT 10KOHM 256TAP 10MSOP	 AD5245BRJ10 ADI (Analog Devices, Inc.)	 AD5243BRMZ10-RL7 Analog Devices Inc. IC DGTL POT 10KOHM 256TAP 10MSOP	 AD5243BRMZ100 Analog Devices Inc. IC DGT POT 100KOHM 256TAP 10MSOP

Shipment

Delivery Time

In-stock items can be shipped within 24 hours. Some parts will be arranged for delivery within 1-2 days from the date all items arrive at our warehouse. And Allelco ships order once a day at about 17:00, except Sunday. Once the goods are shipped, the estimated delivery time depends on the shipping methods and Delivery destination. The table below shows are the logistic time for some common countries.

Delivery Cost

- > Use your express account for shipment if you have one.
 - > Use our account for the shipment. Refer to the table below for the approximate charges.
- (Different time frame / countries / package size has different price.)

Delivery Method

- > Global Common Shipment by DHL / UPS / FedEx / TNT / EMS / SF we support.
- > Others more shipping ways, please get in touch with your customer manager.

Common Countries Logistic Time Reference		
Region	Country	Logistic Time(Day)
America	United States	5
	Brazil	7
Europe	Germany	5
	United Kingdom	4
	Italy	5
Oceania	Australia	6
	New Zealand	7
Asia	India	6
	Japan	7
Middle East	Israel	6

DHL & FedEx Shipment Charges Reference	
Shipment charges(KG)	Reference DHL(USD\$)
0.00kg-1.00kg	USD\$60.00
1.00kg-2.00kg	USD\$70.00
2.00kg-3.00kg	USD\$80.00

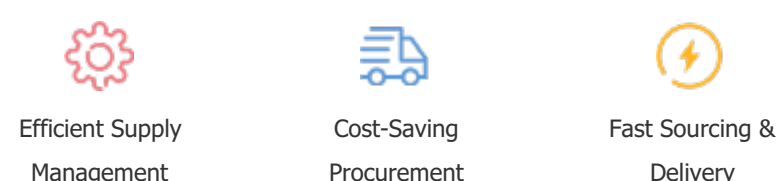
Note: The above table is for reference only. There may have some data bias for the uncontrollable factors.
Contact us if you have any questions.

Payment Support

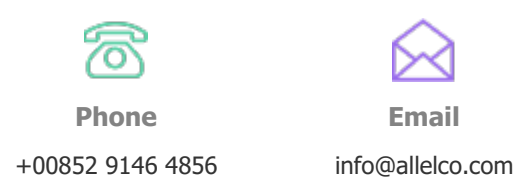
The payment method can be chosen from the methods shown below:
Wire Transfer (T/T, Bank Transfer), Western Union, Credit card,
PayPal.



Your Faithful Supply Chain Partner -



Contact us if you have any questions.



Certifications & Memberships



[View More](#)