



Image may be representation.
See specifications for product details.



SMAJ12CA-TR

Manufacturer Part Number	SMAJ12CA-TR
Manufacturer	STMicroelectronics
Allelco Part Number	32D-SMAJ12CA-TR
ECAD Model	PCB Symbol, Footprint & 3D Mode
Parts Description	TVS DIODE 12VWM 25.3VC SMA
Package	DO-214AC, SMA
Data sheet	SMAJ Datasheet.pdf
RoHs Status	ROHS3 Compliant

[Get a Quote](#)

SMAJ12CA-TR - STMicroelectronics.New Original in Stock. Download Linear Technology SMAJ12CA-TR datasheet/specifications on AllelcoElec.com.
Request a quote for SMAJ12CA-TR, please send us email: info@allelco.com

Specifications

SMAJ12CA-TR Tech Specifications

SMAJ12CA-TR - STMicroelectronics technical specifications, attributes, parameters

Product Attribute	Attribute Value	Product Attribute	Attribute Value
Manufacturer	STMicroelectronics	Package / Case	DO-214AC, SMA
Voltage - Reverse Standoff (Typ)	12V	Package	Tape & Reel (TR)
Voltage - Clamping (Max) @ Ipp	25.3V	Operating Temperature	-55°C ~ 150°C (TJ)
Voltage - Breakdown (Min)	13.3V	Mounting Type	Surface Mount
Type	Zener	Current - Peak Pulse (10/1000µs)	91A (8/20µs)
Supplier Device Package	SMA (DO-214AC)	Capacitance @ Frequency	-
Series	SMAJ, TRANSIL™	Bidirectional Channels	1
Power Line Protection	No	Base Product Number	SMAJ12
Power - Peak Pulse	400W	Applications	General Purpose

Parts with Similar Specifications

The three parts on the right have similar specifications to STMicroelectronics SMAJ12CA-TR

Product Attribute				
Part Number	SMAJ12CA-TR	SMAJ12CA	SMAJ130A	SMAJ12CAQ
Manufacturer	STMicroelectronics	Taiwan Semiconductor Corporation	Taiwan Semiconductor Corporation	Yangjie Technology
Series	SMAJ, TRANSIL™	SMAJ	SMAJ	-
Power - Peak Pulse	400W	400W	400W	-
Voltage - Reverse Standoff (Typ)	12V	12V	130V	-
Mounting Type	Surface Mount	Surface Mount	Surface Mount	-
Bidirectional Channels	1	1	-	-
Power Line Protection	No	No	No	-
Package	Tape & Reel (TR)	Tape & Reel (TR)	Tape & Reel (TR)	Tape & Reel (TR)
Package / Case	DO-214AC, SMA	DO-214AC, SMA	DO-214AC, SMA	-
Voltage - Breakdown (Min)	13.3V	13.3V	144V	-
Operating Temperature	-55°C ~ 150°C (TJ)	-55°C ~ 150°C (TJ)	-55°C ~ 150°C (TJ)	-
Base Product Number	SMAJ12	SMAJ12	SMAJ13	-
Voltage - Clamping (Max) @ Ipp	25.3V	19.9V	209V	-
Supplier Device Package	SMA (DO-214AC)	DO-214AC (SMA)	DO-214AC (SMA)	-
Current - Peak Pulse (10/1000µs)	91A (8/20µs)	20.1A	1.5A	-
Applications	General Purpose	General Purpose	General Purpose	-
Type	Zener	Zener	Zener	-
Capacitance @ Frequency	-	-	-	-

SMAJ12CA-TR Datasheet PDF

Download SMAJ12CA-TR pdf datasheets and STMicroelectronics documentation for SMAJ12CA-TR - STMicroelectronics.

HTML Datasheet

[SMAJ Datasheet.pdf](#)

Other Related Documents

[SMAJ View All Specifications.pdf](#)

Customers Also Interested in

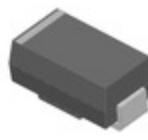
Recommended Products

**SMAJ12CA**

Taiwan Semiconductor Corporation
TVS DIODE 12VWM 19.9VC DO214AC

**SMAJ130A**

Taiwan Semiconductor Corporation
TVS DIODE 130VWM 209VC DO214AC

**SMAJ12CAQ**

Yangjie Technology
TVS - Diodes SMA 12V 400W

**SMAJ130A**

SMC Diode Solutions
TVS DIODE 130VWM 209VC SMA

**SMAJ13**

Taiwan Semiconductor Corporation
400W, 16V, 10%, UNIDIRECTIONAL,

**SMAJ130**

Meritek
TVS DIODE 130VWM 231VC

**SMAJ13**

Littelfuse Inc.
TVS DIODE 13VWM 22.58VC DO214AC

**SMAJ13**

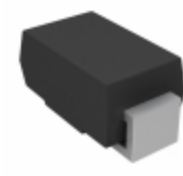
Meritek
TVS DIODE 13VWM 23.8VC

**SMAJ130**

Taiwan Semiconductor Corporation
300W, 160V, 10%, UNIDIRECTIONAL,

**SMAJ130A**

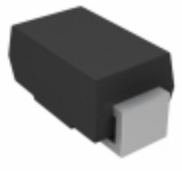
Bourns Inc.
TVS DIODE 130VWM 209VC SMA

**SMAJ12CA-E3/61**

Vishay General Semiconductor - Diodes Division
TVS DIODE 12VWM 19.9VC DO214AC

**SMAJ12CA-13-F**

Diodes Incorporated
TVS DIODE 12VWM 19.9VC SMA

**SMAJ12CA**

Yangzhou Yangjie Electronic Technology Co.,Ltd
TVS DIODE 12VWM 19.9VC DO214AC

**SMAJ12CA-13**

Diodes Incorporated
TVS DIODE 12VWM 19.9VC SMA

**SMAJ130**

Littelfuse Inc.
TVS DIODE 130VWM 219.45VC DO214

**SMAJ12CA**

SMC Diode Solutions
TVS DIODE 12VWM 19.9VC SMA

**SMAJ12CA**

HY Electronic (Cayman) Limited
SURFACE MOUNT UNI/BI-DIRECTIONAL

**SMAJ12CA**

Würth Elektronik
TVS DIODE 12VWM 19.9VC DO214AC

Shipment

Delivery Time

In-stock items can be shipped within 24 hours. Some parts will be arranged for delivery within 1-2 days from the date all items arrive at our warehouse. And Alleco ships order once a day at about 17:00, except Sunday. Once the goods are shipped, the estimated delivery time depends on the shipping methods and Delivery destination. The table below shows are the logistic time for some common countries.

Delivery Cost

> Use your express account for shipment if you have one.

> Use our account for the shipment. Refer to the table below for the approximate charges.

(Different time frame / countries / package size has different price.)

Delivery Method

> Global Common Shipment by DHL / UPS / FedEx / TNT / EMS / SF we support.

> Others more shipping ways, please get in touch with your customer manager.

Common Countries Logistic Time Reference		
Region	Country	Logistic Time(Day)
America	United States	5
	Brazil	7
Europe	Germany	5
	United Kingdom	4
	Italy	5
Oceania	Australia	6
	New Zealand	7
Asia	India	6
	Japan	7
Middle East	Israel	6

DHL & FedEx Shipment Charges Reference	
Shipment charges(KG)	Reference DHL(USD\$)
0.00kg-1.00kg	USD\$60.00
1.00kg-2.00kg	USD\$70.00
2.00kg-3.00kg	USD\$80.00

Note: The above table is for reference only. There may have some data bias for the uncontrollable factors.

Contact us if you have any questions.

Payment Support

The payment method can be chosen from the methods shown below:

Wire Transfer (T/T, Bank Transfer), Western Union, Credit card, PayPal.



Your Faithful Supply Chain Partner -



Efficient Supply Management



Cost-Saving Procurement



Fast Sourcing & Delivery

Contact us if you have any questions.



Phone

+00852 9146 4856



Email

info@alleco.com

Certifications & Memberships



[View More](#)