

Image may be representation.
See specifications for product details.



STPS20H100CR

Manufacturer Part Number	STPS20H100CR
Manufacturer	STMicroelectronics
Allelco Part Number	32D-STPS20H100CR
ECAD Model	PCB Symbol, Footprint & 3D Model
Parts Description	DIODE ARRAY SCHOTTKY 100V I2PAK
Package	TO-262-3 Long Leads, I ² Pak, TO-262AA
Data sheet	STPS20H100C.pdf
RoHs Status	ROHS3 Compliant

[Get a Quote](#)

STPS20H100CR - STMicroelectronics.New Original in Stock. Download Linear Technology STPS20H100CR datasheet/specifications on AllelcoElec.com.
Request a quote for STPS20H100CR, please send us email: info@allelco.com

Specifications

STPS20H100CR Tech Specifications
STPS20H100CR - STMicroelectronics technical specifications, attributes, parameters

Product Attribute	Attribute Value	Product Attribute	Attribute Value
Manufacturer	STMicroelectronics	Package	Tube
Voltage - Forward (Vf) (Max) @ If	770 mV @ 10 A	Operating Temperature - Junction	175°C (Max)
Voltage - DC Reverse (Vr) (Max)	100 V	Mounting Type	Through Hole
Technology	Schottky	Diode Configuration	1 Pair Common Cathode
Supplier Device Package	I2PAK	Current - Reverse Leakage @ Vr	4.5 µA @ 100 V
Speed	Fast Recovery =< 500ns, > 200mA (Io)	Current - Average Rectified (Io) (per Diode)	10A
Series	-	Base Product Number	STPS20
Package / Case	TO-262-3 Long Leads, I ² Pak, TO-262AA		

Parts with Similar Specifications

The three parts on the right have similar specifications to STMicroelectronics STPS20H100CR

Product Attribute				
Part Number	STPS20H100CR	STPS2060CT	STPS2045CT	STPS2045CR
Manufacturer	STMicroelectronics	STMicroelectronics	STMicroelectronics	STMicroelectronics
Package / Case	TO-262-3 Long Leads, I ² Pak, TO-262AA	TO-220-3	TO-220-3	TO-262-3 Long Leads, I ² Pak, TO-262AA
Mounting Type	Through Hole	Through Hole	Through Hole	Through Hole
Current - Average Rectified (Io) (per Diode)	10A	10A	10A	10A
Speed	Fast Recovery =< 500ns, > 200mA (Io)	Fast Recovery =< 500ns, > 200mA (Io)	Fast Recovery =< 500ns, > 200mA (Io)	Fast Recovery =< 500ns, > 200mA (Io)
Series	-	-	-	-
Technology	Schottky	Schottky	Schottky	Schottky
Base Product Number	STPS20	STPS2060	STPS2045	STPS2045
Supplier Device Package	I2PAK	TO-220	TO-220	I2PAK
Voltage - Forward (Vf) (Max) @ If	770 mV @ 10 A	800 mV @ 10 A	570 mV @ 10 A	570 mV @ 10 A
Package	Tube	Tube	Tube	Tube
Current - Reverse Leakage @ Vr	4.5 µA @ 100 V	150 µA @ 60 V	100 µA @ 45 V	100 µA @ 45 V
Operating Temperature - Junction	175°C (Max)	150°C (Max)	175°C (Max)	175°C (Max)
Voltage - DC Reverse (Vr) (Max)	100 V	60 V	45 V	45 V
Diode Configuration	1 Pair Common Cathode	1 Pair Common Cathode	1 Pair Common Cathode	1 Pair Common Cathode

STPS20H100CR Datasheet PDF

Download STPS20H100CR pdf datasheets and STMicroelectronics documentation for STPS20H100CR - STMicroelectronics.

Datasheets

[STPS20H100C.pdf](#)

PCN Packaging

[Box Label Chg 28/Jul/2016.pdf](#)

PCN Design/Specification

[Mult Dev Adv Material Notice 8/Apr/2019.pdf](#)

PCN Assembly/Origin

[Mult Dev Mold Compound Chg 1/May/2019.pdf](#)

Customers Also Interested in

Recommended Products

**STPS2060CT**STMicroelectronics
DIODE ARRAY SCHOTTKY 60V
TO220AB**STPS2045CT**STMicroelectronics
DIODE ARRAY SCHOTTKY 45V
TO220AB**STPS20L15D**STMicroelectronics
DIODE SCHOTTKY 15V 20A TO220AC**STPS2045CR**STMicroelectronics
DIODE ARRAY SCHOTTKY 45V I2PAK**STPS20H100CT**STMicroelectronics
DIODE ARRAY SCHOTTKY 100V
TO220**STPS20H150CT**

STMicroelectronics

**STPS20L15G**Vishay General Semiconductor -
Diodes Division
DIODE SCHOTTKY 15V 20A TO263AB**STPS20H100CFP**STMicroelectronics
DIODE ARRAY SCHOTTKY 100V
TO220F**STPS20H100CGY-TR**STMicroelectronics
DIODE ARRAY SCHOTTKY 100V
D2PAK**STPS20H100CG**STMicroelectronics
DIODE ARRAY SCHOTTKY 100V
D2PAK**STPS20H100CX**

Freescale / NXP Semiconductors

**STPS2045CT-H**

STMicroelectronics

**STPS20L15D**Vishay General Semiconductor -
Diodes Division
DIODE SCHOTTKY 15V 20A TO220AC**STPS20L120CT**STMicroelectronics
DIODE ARRAY SCHOTTKY 120V
TO220**STPS20H100C6**

STMicroelectronics

**STPS2045CTC**STMicroelectronics
Automotive 45 V, 20 A dual Power**STPS20L15G**STMicroelectronics
DIODE SCHOTTKY 15V 20A D2PAK**STPS20H100CG-TR**STMicroelectronics
DIODE ARRAY SCHOTTKY 100V
D2PAK

Shipment

Delivery Time

In-stock items can be shipped within 24 hours. Some parts will be arranged for delivery within 1-2 days from the date all items arrive at our warehouse. And Allelco ships order once a day at about 17:00, except Sunday. Once the goods are shipped, the estimated delivery time depends on the shipping methods and Delivery destination. The table below shows are the logistic time for some common countries.

Delivery Cost

- > Use your express account for shipment if you have one.
 - > Use our account for the shipment. Refer to the table below for the approximate charges.
- (Different time frame / countries / package size has different price.)

Delivery Method

- > Global Common Shipment by DHL / UPS / FedEx / TNT / EMS / SF we support.
- > Others more shipping ways, please get in touch with your customer manager.

Common Countries Logistic Time Reference		
Region	Country	Logistic Time(Day)
America	United States	5
	Brazil	7
Europe	Germany	5
	United Kingdom	4
	Italy	5
Oceania	Australia	6
	New Zealand	7
Asia	India	6
	Japan	7
Middle East	Israel	6

DHL & FedEx Shipment Charges Reference	
Shipment charges(KG)	Reference DHL(USD\$)
0.00kg-1.00kg	USD\$60.00
1.00kg-2.00kg	USD\$70.00
2.00kg-3.00kg	USD\$80.00

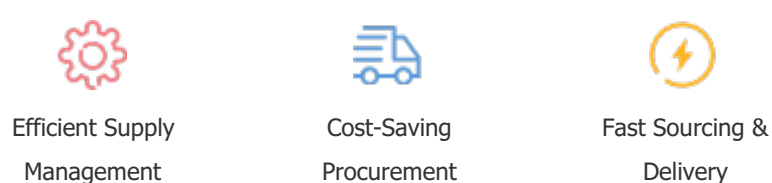
Note: The above table is for reference only. There may have some data bias for the uncontrollable factors.
Contact us if you have any questions.

Payment Support

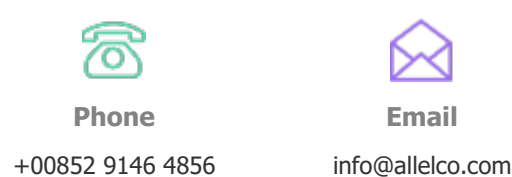
The payment method can be chosen from the methods shown below:
Wire Transfer (T/T, Bank Transfer), Western Union, Credit card,
PayPal.



Your Faithful Supply Chain Partner -



Contact us if you have any questions.



Certifications & Memberships



[View More](#)

Contact us

Address: Flat/Rm C 13/F Harvard Commercial Building 105-111 Thomson Road, Wan Chai, Hong Kong
Phone: +00852 9146 4856
Fax: +00852 3010 8510
Email: info@Allelco.com