

Image may be representation.  
See specifications for product details.



## SS16HE3\_B/H

Manufacturer Part Number	<a href="#">SS16HE3_B/H</a>
Manufacturer	<a href="#">Vishay General Semiconductor – Diodes Division</a>
Allelco Part Number	32D-SS16HE3_B/H
ECAD Model	PCB Symbol, Footprint & 3D Model
Parts Description	DIODE SCHOTTKY 60V 1A DO214AC
Package	DO-214AC, SMA
Data sheet	<a href="#">SS12-SS16.pdf</a>
RoHs Status	ROHS3 Compliant

**Get a Quote**

SS16HE3\_B/H - Vishay General Semiconductor - Diodes Division. New Original in Stock. Download Linear Technology SS16HE3\_B/H datasheet/specifications on AllelcoElec.com.  
Request a quote for SS16HE3\_B/H, please send us email: [info@allelco.com](mailto:info@allelco.com)

### Specifications

SS16HE3\_B/H Tech Specifications  
SS16HE3\_B/H - Vishay General Semiconductor - Diodes Division technical specifications, attributes, parameters

Product Attribute	Attribute Value	Product Attribute	Attribute Value
Manufacturer	Vishay General Semiconductor – Diodes Division	Package	Tape & Reel (TR)
Voltage - Forward (Vf) (Max) @ If	750 mV @ 1 A	Operating Temperature - Junction	-65°C ~ 150°C
Voltage - DC Reverse (Vr) (Max)	60 V	Mounting Type	Surface Mount
Technology	Schottky	Current - Reverse Leakage @ Vr	200 µA @ 60 V
Supplier Device Package	DO-214AC (SMA)	Current - Average Rectified (Io)	1A
Speed	Fast Recovery =< 500ns, > 200mA (Io)	Capacitance @ Vr, F	-
Series	Automotive, AEC-Q101	Base Product Number	SS16
Package / Case	DO-214AC, SMA		

### Parts with Similar Specifications

The three parts on the right have similar specifications to Vishay General Semiconductor - Diodes Division SS16HE3\_B/H

Product Attribute				
Part Number	SS16HE3_B/H	SS16L RQG	SS16HE3_B/I	SS16HE
Manufacturer	Vishay General Semiconductor - Diodes Division	Taiwan Semiconductor Corporation	Vishay General Semiconductor - Diodes Division	onsemi
Mounting Type	Surface Mount	Surface Mount	Surface Mount	Surface Mount
Capacitance @ Vr, F	-	-	-	43pF @ 4V, 1MHz
Voltage - DC Reverse (Vr) (Max)	60 V	60 V	60 V	60 V
Supplier Device Package	DO-214AC (SMA)	Sub SMA	DO-214AC (SMA)	SOD-323HE
Current - Reverse Leakage @ Vr	200 µA @ 60 V	400 µA @ 60 V	200 µA @ 60 V	50 µA @ 60 V
Package / Case	DO-214AC, SMA	DO-219AB	DO-214AC, SMA	2-SMD, Flat Lead
Series	Automotive, AEC-Q101	-	Automotive, AEC-Q101	Automotive, AEC-Q101
Speed	Fast Recovery =< 500ns, > 200mA (Io)	Fast Recovery =< 500ns, > 200mA (Io)	Fast Recovery =< 500ns, > 200mA (Io)	Fast Recovery =< 500ns, > 200mA (Io)
Technology	Schottky	Schottky	Schottky	Schottky
Voltage - Forward (Vf) (Max) @ If	750 mV @ 1 A	700 mV @ 1 A	750 mV @ 1 A	680 mV @ 1 A
Package	Tape & Reel (TR)	Tape & Reel (TR)	Tape & Reel (TR)	Tape & Reel (TR)
Base Product Number	SS16	SS16	SS16	SS16
Operating Temperature - Junction	-65°C ~ 150°C	-55°C ~ 150°C	-65°C ~ 150°C	-55°C ~ 150°C
Current - Average Rectified (Io)	1A	1A	1A	1A

### SS16HE3\_B/H Datasheet PDF

Download SS16HE3\_B/H pdf datasheets and Vishay General Semiconductor - Diodes Division documentation for SS16HE3\_B/H - Vishay General Semiconductor - Diodes Division.

#### Datasheets

[SS12-SS16.pdf](#)

#### PCN Assembly/Origin

[Assembly Site 26/Aug/2021.pdf](#)

### Customers Also Interested in

#### Recommended Products

<b>SS16L RQG</b> Taiwan Semiconductor Corporation DIODE SCHOTTKY 60V 1A SUB SMA	<b>SS16HE3_B/I</b> Vishay General Semiconductor - Diodes Division DIODE SCHOTTKY 60V 1A DO214AC	<b>SS16HE3-A/H</b> Electro-Films (EFI) / Vishay	<b>SS16HE</b> onsemi DIODE SCHOTTKY 60V 1A SOD323HE	<b>SS16T3G</b> onsemi DIODE SCHOTTKY 60V 1A SMA	<b>SS16HE3/61T</b> Vishay General Semiconductor - Diodes Division DIODE SCHOTTKY 60V 1A DO214AC



### SS16FP

onsemi  
DIODE SCHOTTKY 60V 1A SOD123HE

### SS16HE3-B/H

Electro-Films (EFI) / Vishay

### SS16L\_R1\_00001

Panjit International Inc.  
DIODE SCHOTTKY 60V 1A SMA

### SS16R1

JIT

### SS16L R3

Taiwan Semiconductor

### SS16E-TP

Micro Commercial Co  
DIODE SCHOTTKY 60V 1A SMAE



### SS16HE3

Electro-Films (EFI) / Vishay



### SS16FA

onsemi  
DIODE SCHOTTKY 60V 1A SOD123FA



### SS16E T/R

PANJIT



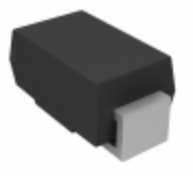
### SS16HM2G

TSC (Taiwan Semiconductor)  
DIODE SCHOTTKY 60V 1A DO214AC



### SS16M-07HRSG

Taiwan Semiconductor



### SS16HE3\_A/H

Vishay General Semiconductor -  
Diodes Division  
DIODE SCHOTTKY 60V 1A DO214AC

## Shipment

### Delivery Time

In-stock items can be shipped within 24 hours. Some parts will be arranged for delivery within 1-2 days from the date all items arrive at our warehouse. And Allelco ships order once a day at about 17:00, except Sunday. Once the goods are shipped, the estimated delivery time depends on the shipping methods and Delivery destination. The table below shows are the logistic time for some common countries.

### Delivery Cost

> Use your express account for shipment if you have one.

> Use our account for the shipment. Refer to the table below for the approximate charges.

(Different time frame / countries / package size has different price.)

### Delivery Method

> Global Common Shipment by DHL / UPS / FedEx / TNT / EMS / SF we support.

> Others more shipping ways, please get in touch with your customer manager.

#### Common Countries Logistic Time Reference

Region	Country	Logistic Time(Day)
America	United States	5
	Brazil	7
Europe	Germany	5
	United Kingdom	4
	Italy	5
Oceania	Australia	6
	New Zealand	7
Asia	India	6
	Japan	7
Middle East	Israel	6

#### DHL & FedEx Shipment Charges Reference

Shipment charges(KG)	Reference DHL(USD\$)
0.00kg-1.00kg	USD\$60.00
1.00kg-2.00kg	USD\$70.00
2.00kg-3.00kg	USD\$80.00

Note: The above table is for reference only. There may have some data bias for the uncontrollable factors.

Contact us if you have any questions.

## Payment Support

The payment method can be chosen from the methods shown below:

Wire Transfer (T/T, Bank Transfer), Western Union, Credit card, PayPal.



## Your Faithful Supply Chain Partner -



Efficient Supply Management



Cost-Saving Procurement



Fast Sourcing & Delivery

Contact us if you have any questions.



Phone

+00852 9146 4856



Email

info@allelco.com

## Certifications & Memberships



[View More](#)



## Contact us

Address: Flat/Rm C 13/F Harvard Commercial Building 105-111 Thomson Road, Wan Chai, Hong Kong

Phone: +00852 9146 4856

Fax: +00852 3010 8510

Email: info@Allelco.com

Copyright © 2012-2023 AllelcoElec.com. All rights reserved.