



Image may be representation.
See specifications for product details.



OP297FSZ-REEL7

Manufacturer Part Number	OP297FSZ-REEL7
Manufacturer	Analog Devices, Inc.
Allelco Part Number	32D-OP297FSZ-REEL7
ECAD Model	Request Free CAD Models
Parts Description	IC OPAMP GP 2 CIRCUIT 8SOIC
Package	8-SOIC (0.154", 3.90mm Width)
Data sheet	OP297 Series.pdf
RoHs Status	ROHS3 Compliant

Get a Quote

OP297FSZ-REEL7 - Analog Devices Inc..New Original in Stock. Download Linear Technology OP297FSZ-REEL7 datasheet/specifications on AllelcoElec.com.
Request a quote for OP297FSZ-REEL7, please send us email: info@allelco.com

Specifications

OP297FSZ-REEL7 Tech Specifications
OP297FSZ-REEL7 - Analog Devices Inc. technical specifications, attributes, parameters

Product Attribute	Attribute Value	Product Attribute	Attribute Value
Manufacturer	Analog Devices, Inc.	Output Type	-
Voltage - Supply Span (Min)	4 V	Operating Temperature	-40°C ~ 85°C
Voltage - Supply Span (Max)	40 V	Number of Circuits	2
Voltage - Input Offset	50 µV	Mounting Type	Surface Mount
Supplier Device Package	8-SOIC	Gain Bandwidth Product	500 kHz
Slew Rate	0.15V/µs	Current - Supply	525µA (x2 Channels)
Series	-	Current - Input Bias	35 pA
Package / Case	8-SOIC (0.154", 3.90mm Width)	Base Product Number	OP297
Package	Tape & Reel (TR)	Amplifier Type	General Purpose

Parts with Similar Specifications

The three parts on the right have similar specifications to Analog Devices Inc. OP297FSZ-REEL7

Product Attribute				
Part Number	OP297FSZ-REEL7	OP297FSZ	OP297FZ	OP297GSZ
Manufacturer	Analog Devices Inc.	Analog Devices Inc.	Analog Devices Inc.	Analog Devices Inc.
Package	Tape & Reel (TR)	Tube	Bulk	Tube
Amplifier Type	General Purpose	General Purpose	General Purpose	General Purpose
Slew Rate	0.15V/µs	0.15V/µs	0.15V/µs	0.15V/µs
Base Product Number	OP297	OP297	-	OP297
Gain Bandwidth Product	500 kHz	500 kHz	500 kHz	500 kHz
Mounting Type	Surface Mount	Surface Mount	Through Hole	Surface Mount
Package / Case	8-SOIC (0.154", 3.90mm Width)	8-SOIC (0.154", 3.90mm Width)	8-CDIP (0.300", 7.62mm)	8-SOIC (0.154", 3.90mm Width)
Voltage - Supply Span (Max)	40 V	40 V	40 V	40 V
Operating Temperature	-40°C ~ 85°C	-40°C ~ 85°C	-40°C ~ 85°C	-40°C ~ 85°C
Output Type	-	-	-	-
Current - Input Bias	35 pA	35 pA	35 pA	50 pA
Voltage - Input Offset	50 µV	50 µV	50 µV	80 µV
Current - Supply	525µA (x2 Channels)	525µA (x2 Channels)	525µA (x2 Channels)	525µA (x2 Channels)
Series	-	-	-	-
Supplier Device Package	8-SOIC	8-SOIC	8-CERDIP	8-SOIC
Number of Circuits	2	2	2	2
Voltage - Supply Span (Min)	4 V	4 V	4 V	4 V

OP297FSZ-REEL7 Datasheet PDF

Download OP297FSZ-REEL7 pdf datasheets and Analog Devices Inc. documentation for OP297FSZ-REEL7 - Analog Devices Inc..

Datasheets

OP297 Series.pdf

Other Related Documents

Tape and Reel Packaging.pdf

Customers Also Interested in

Recommended Products



OP297FSZ

Analog Devices Inc.
IC OPAMP GP 2 CIRCUIT 8SOIC

OP297AZ/883QS

ADI (Analog Devices, Inc.)



OP297FZ

Analog Devices Inc.
IC OPAMP GP 2 CIRCUIT 8CERDIP



OP297EPZ

ADI (Analog Devices, Inc.)



OP297GSZ

Analog Devices Inc.
IC OPAMP GP 2 CIRCUIT 8SOIC

ADI (Analog Devices, Inc.)



OP297GS

Analog Devices Inc.
IC OPAMP GP 2 CIRCUIT 8SOIC



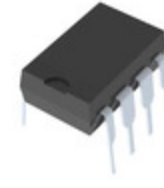
OP297EZ

Analog Devices Inc.
IC OPAMP GP 2 CIRCUIT 8CERDIP



OP297G

ADI (Analog Devices, Inc.)



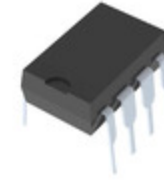
OP297GP

Analog Devices Inc.
IC OPAMP GP 500KHZ DUAL 8DIP



OP297FSZ-REEL

Analog Devices Inc.
IC OPAMP GP 2 CIRCUIT 8SOIC



OP297GPZ

Analog Devices Inc.
IC OPAMP GP 2 CIRCUIT 8DIP



OP297GSZ-REEL7

Analog Devices Inc.
IC OPAMP GP 2 CIRCUIT 8SOIC



OP297FP

Analog Devices Inc.
IC OPAMP GP 500KHZ DUAL 8DIP



OP297FPZ

Analog Devices Inc.
IC OPAMP GP 2 CIRCUIT 8DIP



OP297FS

Analog Devices Inc.
IC OPAMP GP 2 CIRCUIT 8SOIC



OP296HRUZ-REEL

Analog Devices Inc.
IC CMOS 2 CIRCUIT 8TSSOP



OP297GSZ-REEL

Analog Devices Inc.
IC OPAMP GP 2 CIRCUIT 8SOIC

Shipment

Delivery Time

In-stock items can be shipped within 24 hours. Some parts will be arranged for delivery within 1-2 days from the date all items arrive at our warehouse. And Allelco ships order once a day at about 17:00, except Sunday. Once the goods are shipped, the estimated delivery time depends on the shipping methods and Delivery destination. The table below shows are the logistic time for some common countries.

Delivery Cost

> Use your express account for shipment if you have one.

> Use our account for the shipment. Refer to the table below for the approximate charges.

(Different time frame / countries / package size has different price.)

Delivery Method

> Global Common Shipment by DHL / UPS / FedEx / TNT / EMS / SF we support.

> Others more shipping ways, please get in touch with your customer manager.

Common Countries Logistic Time Reference		
Region	Country	Logistic Time(Day)
America	United States	5
	Brazil	7
Europe	Germany	5
	United Kingdom	4
	Italy	5
Oceania	Australia	6
	New Zealand	7
Asia	India	6
	Japan	7
Middle East	Israel	6

DHL & FedEx Shipment Charges Reference	
Shipment charges(KG)	Reference DHL(USD\$)
0.00kg-1.00kg	USD\$60.00
1.00kg-2.00kg	USD\$70.00
2.00kg-3.00kg	USD\$80.00

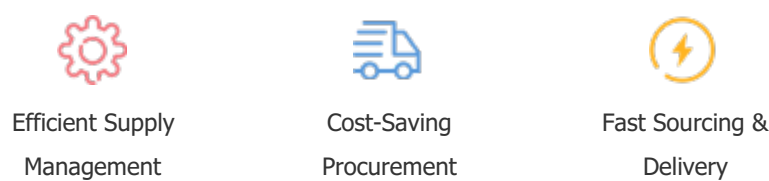
Note: The above table is for reference only. There may have some data bias for the uncontrollable factors.
Contact us if you have any questions.

Payment Support

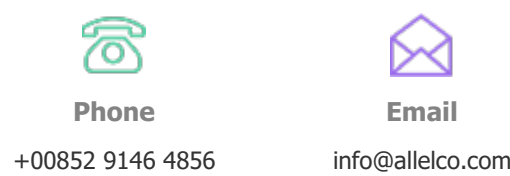
The payment method can be chosen from the methods shown below:
Wire Transfer (T/T, Bank Transfer), Western Union, Credit card, PayPal.



Your Faithful Supply Chain Partner -



Contact us if you have any questions.



+00852 9146 4856 info@allelco.com

Certifications & Memberships



View More