



Image may be representation.
See specifications for product details.



1PMT5927BT1G

Manufacturer Part Number	1PMT5927BT1G
Manufacturer	onsemi
Allelco Part Number	32D-1PMT5927BT1G
ECAD Model	PCB Footprint and Symbol
Parts Description	DIODE ZENER 12V 3.2W POWERMITE
Package	DO-216AA
Data sheet	1PMT59xxB.pdf
RoHs Status	ROHS3 Compliant

Get a Quote

1PMT5927BT1G - onsemi.New Original in Stock. Download Linear Technology 1PMT5927BT1G datasheet/specifications on AllelcoElec.com.
Request a quote for 1PMT5927BT1G, please send us email: info@allelco.com

Specifications

1PMT5927BT1G Tech Specifications

1PMT5927BT1G - onsemi technical specifications, attributes, parameters

Product Attribute	Attribute Value	Product Attribute	Attribute Value
Manufacturer	onsemi	Package / Case	DO-216AA
Voltage - Zener (Nom) (Vz)	12 V	Package	Tape & Reel (TR)
Voltage - Forward (Vf) (Max) @ If	1.25 V @ 200 mA	Operating Temperature	-55°C ~ 150°C
Tolerance	±5%	Mounting Type	Surface Mount
Supplier Device Package	Powermite	Impedance (Max) (Zzt)	6.5 Ohms
Series	-	Current - Reverse Leakage @ Vr	1 µA @ 9.1 V
Power - Max	3.2 W	Base Product Number	1PMT5927

Parts with Similar Specifications

The three parts on the right have similar specifications to onsemi 1PMT5927BT1G

Product Attribute				
Part Number	1PMT5927BT1G	1PMT5924BT1	1PMT5941BT1G	BZX84C11
Manufacturer	onsemi	onsemi	onsemi	Diotec Semiconductor
Voltage - Zener (Nom) (Vz)	12 V	9.1 V	47 V	11 V
Tolerance	±5%	±5%	±5%	±5%
Power - Max	3.2 W	3.2 W	3.2 W	300 mW
Package	Tape & Reel (TR)	Tape & Reel (TR)	Tape & Reel (TR)	Tape & Reel (TR)
Package / Case	DO-216AA	DO-216AA	DO-216AA	TO-236-3, SC-59, SOT-23-3
Operating Temperature	-55°C ~ 150°C	-55°C ~ 150°C	-55°C ~ 150°C	-50°C ~ 150°C (TJ)
Mounting Type	Surface Mount	Surface Mount	Surface Mount	Surface Mount
Supplier Device Package	Powermite	Powermite	Powermite	SOT-23-3 (TO-236)
Current - Reverse Leakage @ Vr	1 µA @ 9.1 V	5 µA @ 7 V	1 µA @ 35.8 V	100 nA @ 8 V
Series	-	-	-	-
Base Product Number	1PMT5927	1PMT5924	1PMT5941	BZX84
Impedance (Max) (Zzt)	6.5 Ohms	4 Ohms	67 Ohms	20 Ohms
Voltage - Forward (Vf) (Max) @ If	1.25 V @ 200 mA	1.25 V @ 200 mA	1.25 V @ 200 mA	-

1PMT5927BT1G Datasheet PDF

Download 1PMT5927BT1G pdf datasheets and onsemi documentation for 1PMT5927BT1G - onsemi.

Datasheets

[1PMT59xxB.pdf](#)

Environmental Information

[onsemi RoHS.pdf](#)

Customers Also Interested in

Recommended Products



1PMT12AT1G
Littelfuse Inc.
TVS DIODE 12VWM 19.9VC
POWERMITE



1PMT12AT1
onsemi
TVS DIODE 12VWM 19.9VC
POWERMITE



1PMT5924BT1
onsemi
DIODE ZENER 9.1V 3.2W
POWERMITE



1PMT5941BT1G
onsemi
DIODE ZENER 47V 3.2W
POWERMITE



BZX84C11
Diotec Semiconductor
ZENER SOT-23 11V 0.3W 5%



1PMT5920BT1G
onsemi
DIODE ZENER 6.2V 500MW
POWERMITE

**1PMT5.0AT1G**Littelfuse Inc.
TVS DIODE 5VWM 9.2VC
POWERMITE**1PMT40AT1**onsemi
TVS DIODE 40VWM 64.5VC
POWERMITE**1PMT58AT1**onsemi
TVS DIODE 58VWM 93.6VC
POWERMITE**1PMT16AT3G**Littelfuse Inc.
TVS DIODE 16VWM 26VC
POWERMITE**1PMT5936BT1**onsemi
DIODE ZENER 30V 3.2W
POWERMITE**1PMT16AT3G**onsemi
TVS ZENER 16V 175W POWERMITE**1PMT5929BT1G**onsemi
DIODE ZENER 15V 3.2W
POWERMITE**1PMT5935BT1G**onsemi
DIODE ZENER 27V 3.2W
POWERMITE**1N5343BRLG**onsemi
DIODE ZENER 7.5V 5W AXIAL**1PMT33AT1**onsemi
TVS DIODE 33VWM 53.3VC
POWERMITE**1PMT51AT1**onsemi
TVS DIODE 51VWM 82.4VC
POWERMITE**1PMT5924BT1G**onsemi
DIODE ZENER 9.1V 3.2W
POWERMITE

Shipment

Delivery Time

In-stock items can be shipped within 24 hours. Some parts will be arranged for delivery within 1-2 days from the date all items arrive at our warehouse. And Allelco ships order once a day at about 17:00, except Sunday. Once the goods are shipped, the estimated delivery time depends on the shipping methods and Delivery destination. The table below shows are the logistic time for some common countries.

Delivery Cost

> Use your express account for shipment if you have one.

> Use our account for the shipment. Refer to the table below for the approximate charges.

(Different time frame / countries / package size has different price.)

Delivery Method

> Global Common Shipment by DHL / UPS / FedEx / TNT / EMS / SF we support.

> Others more shipping ways, please get in touch with your customer manager.

Common Countries Logistic Time Reference		
Region	Country	Logistic Time(Day)
America	United States	5
	Brazil	7
Europe	Germany	5
	United Kingdom	4
	Italy	5
Oceania	Australia	6
	New Zealand	7
Asia	India	6
	Japan	7
Middle East	Israel	6

DHL & FedEx Shipment Charges Reference	
Shipment charges(KG)	Reference DHL(USD\$)
0.00kg-1.00kg	USD\$60.00
1.00kg-2.00kg	USD\$70.00
2.00kg-3.00kg	USD\$80.00

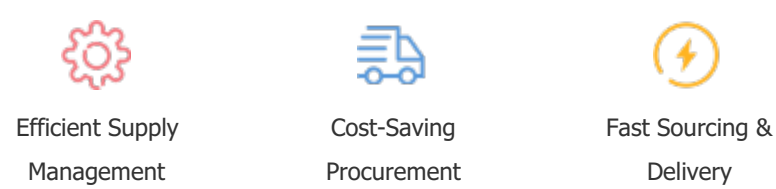
Note: The above table is for reference only. There may have some data bias for the uncontrollable factors.
Contact us if you have any questions.

Payment Support

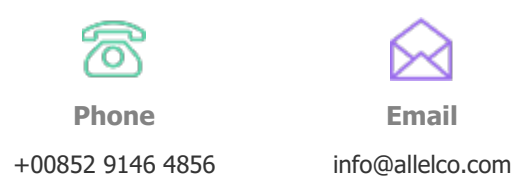
The payment method can be chosen from the methods shown below:
Wire Transfer (T/T, Bank Transfer), Western Union, Credit card,
PayPal.



Your Faithful Supply Chain Partner -



Contact us if you have any questions.



Certifications & Memberships



[View More](#)