

Image may be representation.
See specifications for product details.



ADR392WBUJZ-R7

Manufacturer Part Number	ADR392WBUJZ-R7
Manufacturer	Analog Devices, Inc.
Allelco Part Number	32D-ADR392WBUJZ-R7
ECAD Model	PCB Symbol, Footprint & 3D Model
Parts Description	IC VREF SERIES 0.12% TSOT5
Package	SOT-23-5 Thin, TSOT-23-5
Data sheet	Cylindrical Battery Holders.pdf
RoHs Status	ROHS3 Compliant

Get a Quote

ADR392WBUJZ-R7 - Analog Devices Inc..New Original in Stock. Download Linear Technology ADR392WBUJZ-R7 datasheet/specifications on AllelcoElec.com.
Request a quote for ADR392WBUJZ-R7, please send us email: info@allelco.com

Specifications

ADR392WBUJZ-R7 Tech Specifications
ADR392WBUJZ-R7 - Analog Devices Inc. technical specifications, attributes, parameters

Product Attribute	Attribute Value	Product Attribute	Attribute Value
Manufacturer	Analog Devices, Inc.	Package	Tape & Reel (TR)
Voltage - Output (Min/Fixed)	4.096V	Output Type	Fixed
Voltage - Input	4.3V ~ 15V	Operating Temperature	-40°C ~ 125°C (TA)
Tolerance	±0.12%	Noise - 10Hz to 10kHz	-
Temperature Coefficient	9ppm/°C	Noise - 0.1Hz to 10Hz	7µVp-p
Supplier Device Package	TSOT-23-5	Mounting Type	Surface Mount
Series	Automotive	Current - Supply	140µA
Reference Type	Series	Current - Output	5 mA
Package / Case	SOT-23-5 Thin, TSOT-23-5	Base Product Number	ADR392

Parts with Similar Specifications

The three parts on the right have similar specifications to Analog Devices Inc. ADR392WBUJZ-R7

Product Attribute				
Part Number	ADR392WBUJZ-R7	ADR395AUJZ-R2	ADR420ARMZ	ADR420ARMZ-REEL7
Manufacturer	Analog Devices Inc.	Analog Devices Inc.	Analog Devices Inc.	Analog Devices Inc.
Noise - 10Hz to 10kHz	-	-	-	-
Base Product Number	ADR392	ADR395	ADR420	ADR420
Series	Automotive	ADR39	XFET®	XFET®
Reference Type	Series	Series	Series	Series
Current - Output	5 mA	5 mA	10 mA	10 mA
Supplier Device Package	TSOT-23-5	TSOT-23-5	8-MSOP	8-MSOP
Mounting Type	Surface Mount	Surface Mount	Surface Mount	Surface Mount
Package / Case	SOT-23-5 Thin, TSOT-23-5	SOT-23-5 Thin, TSOT-23-5	8-TSSOP, 8-MSOP (0.118', 3.00mm Width)	8-TSSOP, 8-MSOP (0.118', 3.00mm Width)
Noise - 0.1Hz to 10Hz	7µVp-p	8µVp-p	1.75µVp-p	1.75µVp-p
Package	Tape & Reel (TR)	Tape & Reel (TR)	Tube	Tape & Reel (TR)
Tolerance	±0.12%	±0.12%	±0.15%	±0.15%
Current - Supply	140µA	140µA	600µA	600µA
Output Type	Fixed	Fixed	Fixed	Fixed
Voltage - Output (Min/Fixed)	4.096V	5V	2.048V	2.048V
Operating Temperature	-40°C ~ 125°C (TA)	-40°C ~ 125°C (TA)	-40°C ~ 125°C (TA)	-40°C ~ 125°C (TA)
Temperature Coefficient	9ppm/°C	25ppm/°C	10ppm/°C	10ppm/°C
Voltage - Input	4.3V ~ 15V	5.3V ~ 15V	4V ~ 18V	4V ~ 18V

ADR392WBUJZ-R7 Datasheet PDF

Download ADR392WBUJZ-R7 pdf datasheets and Analog Devices Inc. documentation for ADR392WBUJZ-R7 - Analog Devices Inc..

Datasheets

[Cylindrical Battery Holders.pdf](#)

Other Related Documents

[Tape and Reel Packaging.pdf](#)

Customers Also Interested in

Recommended Products

**ADR392BUJZ**

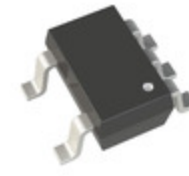
ADI (Analog Devices, Inc.)

**ADR395AUJZ**

ADI (Analog Devices, Inc.)

**ADR392AUJ-REZ**

ADI (Analog Devices, Inc.)

**ADR395AUJZ-R2**Analog Devices Inc.
IC VREF SERIES 0.12% TSOT5**ADR420ARMZ**Analog Devices Inc.
IC VREF SERIES 0.15% 8MSOP**ADR420ARMZ-REEL7**Analog Devices Inc.
IC VREF SERIES 0.15% 8MSOP**ADR395AUJZ-REEL7**Analog Devices Inc.
IC VREF SERIES 0.12% TSOT5**ADR392AUJZ-R2**Analog Devices Inc.
IC VREF SERIES 0.15% TSOT5**ADR392ART-REEL7**Analog Devices Inc.
IC VREF SRS PREC 4.096V SOT23-5**ADR392BUJZ-REEL7**Analog Devices Inc.
IC VREF SERIES 0.12% TSOT5**ADR392WBUJZ**

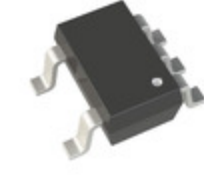
ADI (Analog Devices, Inc.)

**ADR392BUJZ-R2**Analog Devices Inc.
IC VREF SERIES 0.12% TSOT5**ADR420ARZ**Analog Devices Inc.
IC VREF SERIES 0.15% 8SOIC**ADR392AUJZ**

ADI (Analog Devices, Inc.)

**ADR420ARM**Analog Devices Inc.
IC VREF SERIES PREC 2.048V 8MSOP**ADR392ART**

ADI (Analog Devices, Inc.)

**ADR392AUJZ-REEL7**Analog Devices Inc.
IC VREF SERIES 0.15% TSOT5**ADR395BUJZ-REEL7**Analog Devices Inc.
IC VREF SERIES 0.1% TSOT5

Shipment

Delivery Time

In-stock items can be shipped within 24 hours. Some parts will be arranged for delivery within 1-2 days from the date all items arrive at our warehouse. And Allelco ships order once a day at about 17:00, except Sunday. Once the goods are shipped, the estimated delivery time depends on the shipping methods and Delivery destination. The table below shows are the logistic time for some common countries.

Delivery Cost

> Use your express account for shipment if you have one.

> Use our account for the shipment. Refer to the table below for the approximate charges.

(Different time frame / countries / package size has different price.)

Delivery Method

> Global Common Shipment by DHL / UPS / FedEx / TNT / EMS / SF we support.

> Others more shipping ways, please get in touch with your customer manager.

Common Countries Logistic Time Reference		
Region	Country	Logistic Time(Day)
America	United States	5
	Brazil	7
Europe	Germany	5
	United Kingdom	4
	Italy	5
Oceania	Australia	6
	New Zealand	7
Asia	India	6
	Japan	7
Middle East	Israel	6

DHL & FedEx Shipment Charges Reference	
Shipment charges(KG)	Reference DHL(USD\$)
0.00kg-1.00kg	USD\$60.00
1.00kg-2.00kg	USD\$70.00
2.00kg-3.00kg	USD\$80.00

Note: The above table is for reference only. There may have some data bias for the uncontrollable factors.

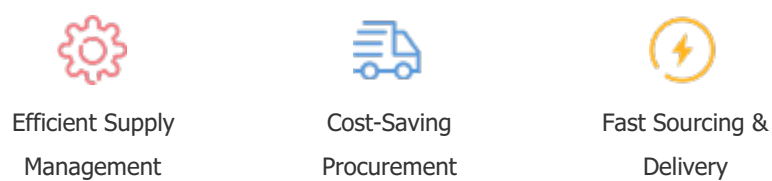
Contact us if you have any questions.

Payment Support

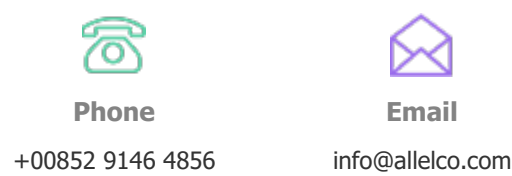
The payment method can be chosen from the methods shown below:
Wire Transfer (T/T, Bank Transfer), Western Union, Credit card,
PayPal.



Your Faithful Supply Chain Partner -



Contact us if you have any questions.



Certifications & Memberships



[View More](#)