

Image may be representation.  
See specifications for product details.



## ADG608TRUZ

|                          |  |
|--------------------------|--|
| Manufacturer Part Number | <b>ADG608TRUZ</b>                      |
| Manufacturer             | <b>Analog Devices, Inc.</b>            |
| Allelco Part Number      | 32D-ADG608TRUZ                         |
| ECAD Model               | PCB Symbol, Footprint & 3D Model       |
| Parts Description        | IC MUX 8:1 30OHM 16TSSOP               |
| Package                  | 16-TSSOP (0.173', 4.40mm Width)        |
| Data sheet               | <b>Cylindrical Battery Holders.pdf</b> |
| RoHs Status              | <b>ROHS3 Compliant</b>                 |

**Get a Quote**

ADG608TRUZ - Analog Devices Inc..New Original in Stock. Download Linear Technology ADG608TRUZ datasheet/specifications on AllelcoElec.com.  
Request a quote for ADG608TRUZ, please send us email: [info@allelco.com](mailto:info@allelco.com)

### Specifications

ADG608TRUZ Tech Specifications

ADG608TRUZ - Analog Devices Inc. technical specifications, attributes, parameters

| Product Attribute             | Attribute Value                 | Product Attribute                      | Attribute Value |
|-------------------------------|---------------------------------|--|-----------------|
| Manufacturer                  | Analog Devices, Inc.            | Number of Circuits                     | 1               |
| Voltage - Supply, Single (V+) | 3.3V ~ 5V                       | Multiplexer/Demultiplexer Circuit      | 8:1             |
| Voltage - Supply, Dual (V±)   | ±5V                             | Mounting Type                          | Surface Mount   |
| Switch Time (Ton, Toff) (Max) | 75ns, 45ns                      | Current - Leakage (IS(off)) (Max)      | 500pA           |
| Switch Circuit                | -                               | Crosstalk                              | -85dB @ 100kHz  |
| Supplier Device Package       | 16-TSSOP                        | Charge Injection                       | 6pC             |
| Series                        | -                               | Channel-to-Channel Matching (ΔRon)     | 50hm (Max)      |
| Package / Case                | 16-TSSOP (0.173', 4.40mm Width) | Channel Capacitance (CS(off), CD(off)) | 9pF, 40pF       |
| Package                       | Tube                            | Base Product Number                    | ADG608          |
| Operating Temperature         | -55°C ~ 125°C (TA)              | -3db Bandwidth                         | -               |
| On-State Resistance (Max)     | 300hm                           |  |                 |

### Parts with Similar Specifications

The three parts on the right have similar specifications to Analog Devices Inc. ADG608TRUZ

| Product Attribute                      |                                 |                                 |                                 |                                |
|--|---------------------------------|---------------------------------|---------------------------------|--------------------------------|
| Part Number                            | ADG608TRUZ                      | <b>ADG609BRU-REEL7</b>          | <b>ADG609BRUZ</b>               | <b>ADG608BRZ-REEL</b>          |
| Manufacturer                           | Analog Devices Inc.             | Analog Devices Inc.             | Analog Devices Inc.             | Analog Devices Inc.            |
| Current - Leakage (IS(off)) (Max)      | 500pA                           | 500pA                           | 500pA                           | 500pA                          |
| Switch Time (Ton, Toff) (Max)          | 75ns, 45ns                      | 75ns, 45ns                      | 75ns, 45ns                      | 75ns, 45ns                     |
| Voltage - Supply, Single (V+)          | 3.3V ~ 5V                       | 3.3V ~ 5V                       | 3.3V ~ 5V                       | 3.3V ~ 5V                      |
| Series                                 | -                               | -                               | -                               | -                              |
| Channel Capacitance (CS(off), CD(off)) | 9pF, 40pF                       | 9pF, 20pF                       | 9pF, 20pF                       | 9pF, 40pF                      |
| Number of Circuits                     | 1                               | 2                               | 2                               | 1                              |
| Switch Circuit                         | -                               | SP4T                            | SP4T                            | -                              |
| Package / Case                         | 16-TSSOP (0.173', 4.40mm Width) | 16-TSSOP (0.173", 4.40mm Width) | 16-TSSOP (0.173", 4.40mm Width) | 16-SOIC (0.154', 3.90mm Width) |
| Base Product Number                    | ADG608                          | ADG609                          | ADG609                          | ADG608                         |
| -3db Bandwidth                         | -                               | -                               | -                               | -                              |
| Supplier Device Package                | 16-TSSOP                        | 16-TSSOP                        | 16-TSSOP                        | 16-SOIC                        |
| Package                                | Tube                            | Tape & Reel (TR)                | Tube                            | Tape & Reel (TR)               |
| Mounting Type                          | Surface Mount                   | Surface Mount                   | Surface Mount                   | Surface Mount                  |
| Channel-to-Channel Matching (ΔRon)     | 50hm (Max)                      | 50hm (Max)                      | 50hm (Max)                      | 50hm (Max)                     |
| Crosstalk                              | -85dB @ 100kHz                  | -85dB @ 100kHz                  | -85dB @ 100kHz                  | -85dB @ 100kHz                 |
| Voltage - Supply, Dual (V±)            | ±5V                             | ±5V                             | ±5V                             | ±5V                            |
| Charge Injection                       | 6pC                             | 6pC                             | 6pC                             | 6pC                            |
| On-State Resistance (Max)              | 300hm                           | 300hm                           | 300hm                           | 300hm                          |
| Operating Temperature                  | -55°C ~ 125°C (TA)              | -40°C ~ 85°C (TA)               | -40°C ~ 85°C (TA)               | -40°C ~ 85°C (TA)              |
| Multiplexer/Demultiplexer Circuit      | 8:1                             | 4:1                             | 4:1                             | 8:1                            |

### ADG608TRUZ Datasheet PDF

Download ADG608TRUZ pdf datasheets and Analog Devices Inc. documentation for ADG608TRUZ - Analog Devices Inc..

#### Datasheets

Cylindrical Battery Holders.pdf

### Customers Also Interested in

## Recommended Products



### ADG609BRU-REEL7

Analog Devices Inc.  
IC SWITCH SP4T X 2 300HM  
16TSSOP



### ADG609BRUZ

Analog Devices Inc.  
IC SWITCH SP4T X 2 300HM  
16TSSOP



### ADG608BRZ-REEL

Analog Devices Inc.  
IC MUX 8:1 300HM 16SOIC



### ADG609BR

Analog Devices Inc.  
IC SWITCH SP4T X 2 300HM 16SOIC



### ADG609BN

Analog Devices Inc.  
IC SWITCH SP4T X 2 300HM 16DIP



### ADG608BRU

Analog Devices Inc.  
IC MUX 8:1 300HM 16TSSOP



### ADG608BR

Analog Devices Inc.  
IC MUX 8:1 300HM 16SOIC



### ADG609BRU

Analog Devices Inc.  
IC SWITCH SP4T X 2 300HM  
16TSSOP



### ADG608BRUZ

Analog Devices Inc.  
IC MUX 8:1 300HM 16TSSOP



### ADG608TRU

Analog Devices Inc.  
IC MUX 8:1 300HM 16TSSOP



### ADG609BRZ-REEL

Analog Devices Inc.  
IC SWITCH SP4T X 2 300HM 16SOIC



### ADG608TRUZ-REEL7

Analog Devices Inc.  
IC MUX 8:1 300HM 16TSSOP



### ADG608BRUZ-REEL7

Analog Devices Inc.  
IC MUX 8:1 300HM 16TSSOP



### ADG609BRZ

Analog Devices Inc.  
IC SWITCH SP4T X 2 300HM 16SOIC



### ADG609BNZ

Analog Devices Inc.  
IC SWITCH SP4T X 2 300HM 16DIP



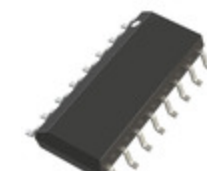
### ADG609BRUZ-REEL7

Analog Devices Inc.  
IC SWITCH SP4T X 2 300HM  
16TSSOP



### ADG608BRZ

Analog Devices Inc.  
IC MUX 8:1 300HM 16SOIC



### ADG608BR-REEL

Analog Devices Inc.  
IC MUX 8:1 300HM 16SOIC

## Shipment

### Delivery Time

In-stock items can be shipped within 24 hours. Some parts will be arranged for delivery within 1-2 days from the date all items arrive at our warehouse. And Allelco ships order once a day at about 17:00, except Sunday. Once the goods are shipped, the estimated delivery time depends on the shipping methods and Delivery destination. The table below shows are the logistic time for some common countries.

### Delivery Cost

> Use your express account for shipment if you have one.

> Use our account for the shipment. Refer to the table below for the approximate charges.

(Different time frame / countries / package size has different price.)

### Delivery Method

> Global Common Shipment by DHL / UPS / FedEx / TNT / EMS / SF we support.

> Others more shipping ways, please get in touch with your customer manager.

| Common Countries Logistic Time Reference |                |                    |
|--|----------------|--------------------|
| Region                                   | Country        | Logistic Time(Day) |
| America                                  | United States  | 5                  |
|  | Brazil         | 7                  |
| Europe                                   | Germany        | 5                  |
|  | United Kingdom | 4                  |
|  | Italy          | 5                  |
| Oceania                                  | Australia      | 6                  |
|  | New Zealand    | 7                  |
| Asia                                     | India          | 6                  |
|  | Japan          | 7                  |
| Middle East                              | Israel         | 6                  |

| DHL & FedEx Shipment Charges Reference |                      |
|--|----------------------|
| Shipment charges(KG)                   | Reference DHL(USD\$) |
| 0.00kg-1.00kg                          | USD\$60.00           |
| 1.00kg-2.00kg                          | USD\$70.00           |
| 2.00kg-3.00kg                          | USD\$80.00           |

Note: The above table is for reference only. There may have some data bias for the uncontrollable factors.

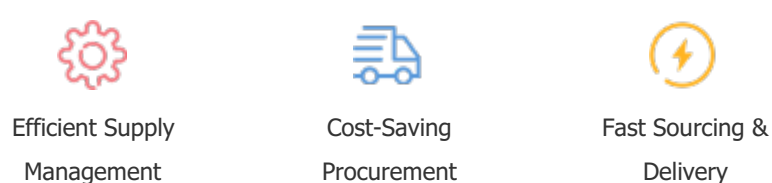
Contact us if you have any questions.

## Payment Support

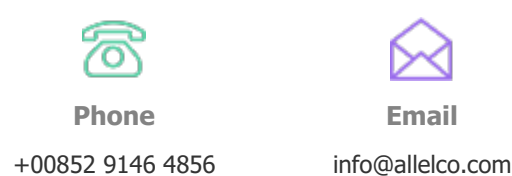
The payment method can be chosen from the methods shown below:  
Wire Transfer (T/T, Bank Transfer), Western Union, Credit card,  
PayPal.



## Your Faithful Supply Chain Partner -



Contact us if you have any questions.



## Certifications & Memberships



View More