

Image may be representation.  
See specifications for product details.



## EP20K200EQC208-3N

Manufacturer Part Number	<a href="#">EP20K200EQC208-3N</a>
Manufacturer	<a href="#">Intel</a>
Allelco Part Number	32D-EP20K200EQC208-3N
ECAD Model	<a href="#">Request Free CAD Models</a>
Parts Description	IC FPGA 136 I/O 208QFP
Package	208-BFQFP
Data sheet	<a href="#">APEX 20K Family Datasheet.pdf</a> <a href="#">Virtual JTAG Megafuntion Guide.pdf</a>

[Get a Quote](#)

EP20K200EQC208-3N - Intel.New Original in Stock. Download Linear Technology EP20K200EQC208-3N datasheet/specifications on AllelcoElec.com.  
Request a quote for EP20K200EQC208-3N, please send us email: [info@allelco.com](mailto:info@allelco.com)

### Specifications

EP20K200EQC208-3N Tech Specifications  
EP20K200EQC208-3N - Intel technical specifications, attributes, parameters

Product Attribute	Attribute Value	Product Attribute	Attribute Value
Manufacturer	Intel	Operating Temperature	0°C ~ 85°C (TJ)
Voltage - Supply	1.71V ~ 1.89V	Number of Logic Elements/Cells	8320
Total RAM Bits	106496	Number of LABs/CLBs	832
Supplier Device Package	208-PQFP (28x28)	Number of I/O	136
Series	APEX-20KE®	Number of Gates	526000
Package / Case	208-BFQFP	Mounting Type	Surface Mount
Package	Tray	Base Product Number	EP20K200

### Parts with Similar Specifications

The three parts on the right have similar specifications to Intel EP20K200EQC208-3N

Product Attribute				
Part Number	EP20K200EQC208-3N	<a href="#">EP20K200EF1484-2X</a>	<a href="#">EP20K200EFC672-2</a>	<a href="#">EP20K200EFC484-3</a>
Manufacturer	Intel	Intel	Intel	Intel
Operating Temperature	0°C ~ 85°C (TJ)	-40°C ~ 100°C (TJ)	0°C ~ 85°C (TJ)	0°C ~ 85°C (TJ)
Supplier Device Package	208-PQFP (28x28)	484-FBGA (23x23)	672-FBGA (27x27)	484-FBGA (23x23)
Number of I/O	136	376	376	376
Voltage - Supply	1.71V ~ 1.89V	1.71V ~ 1.89V	1.71V ~ 1.89V	1.71V ~ 1.89V
Mounting Type	Surface Mount	Surface Mount	Surface Mount	Surface Mount
Number of LABs/CLBs	832	832	832	832
Total RAM Bits	106496	106496	106496	106496
Base Product Number	EP20K200	EP20K200	EP20K200	EP20K200
Package	Tray	Tray	Tray	Tray
Number of Logic Elements/Cells	8320	8320	8320	8320
Number of Gates	526000	526000	526000	526000
Series	APEX-20KE®	APEX-20KE®	APEX-20KE®	APEX-20KE®
Package / Case	208-BFQFP	484-BBGA	672-BBGA	484-BBGA

### EP20K200EQC208-3N Datasheet PDF

Download EP20K200EQC208-3N pdf datasheets and Intel documentation for EP20K200EQC208-3N - Intel.

#### Datasheets

- [APEX 20K Family Datasheet.pdf](#)
- [Virtual JTAG Megafuntion Guide.pdf](#)

#### PCN Packaging

- [All Dev Pkg Chg 1/Aug/2018.pdf](#)
- [Mult Dev Dessicant Chg 19/Jul/2019.pdf](#)

#### PCN Obsolescence/ EOL

- [EOL 01/Dec/2016.pdf](#)
- [EOL 21/Nov/2016.pdf](#)

#### PCN Design/Specification

- [Mult Series Software Chgs 26/Mar/2020.pdf](#)

### Customers Also Interested in

#### Recommended Products

					
<b>EP20K200EFI484-2X</b>	<b>EP20K200EFC672-2</b>	<b>EP20K200EFC484-3</b>	<b>EP20K200EQI240-2</b>	<b>EP20K200EFC672-1</b>	<b>EP20K200FC484-1</b>
Intel IC FPGA 376 I/O 484FBGA	Intel IC FPGA 376 I/O 672FBGA	Intel IC FPGA 376 I/O 484FBGA	Intel IC FPGA 168 I/O 240QFP	Intel IC FPGA 376 I/O 672FBGA	Intel IC FPGA 382 I/O 484FBGA
					
<b>EP20K200EQC208-2X</b>	<b>EP20K200EQC240-2</b>	<b>EP20K200EQC208-2X</b>	<b>EP20K200EQC240-2X</b>	<b>EP20K200EFC672-1</b>	<b>EP20K200EQC240-1X</b>
Intel IC FPGA 136 I/O 208QFP	Intel IC FPGA 168 I/O 240QFP	Altera IC FPGA 136 I/O 208QFP	Intel IC FPGA 168 I/O 240QFP	Altera IC FPGA 376 I/O 672FBGA	Intel IC FPGA 168 I/O 240QFP
					
<b>EP20K200EQC240-3</b>	<b>EP20K200EQC240-1</b>	<b>EP20K200EQI240-2N</b>	<b>EP20K200EFC672-2</b>	<b>EP20K200EFC672-1X</b>	<b>EP20K200EFC484-3N</b>
Intel IC FPGA 168 I/O 240QFP	Intel IC FPGA 168 I/O 240QFP	Intel IC FPGA 168 I/O 240QFP	Altera IC FPGA 376 I/O 672FBGA	Intel IC FPGA 376 I/O 672FBGA	Intel IC FPGA 376 I/O 484FBGA

## Shipment

### Delivery Time

In-stock items can be shipped within 24 hours. Some parts will be arranged for delivery within 1-2 days from the date all items arrive at our warehouse. And Allelco ships order once a day at about 17:00, except Sunday. Once the goods are shipped, the estimated delivery time depends on the shipping methods and Delivery destination. The table below shows are the logistic time for some common countries.

### Delivery Cost

> Use your express account for shipment if you have one.

> Use our account for the shipment. Refer to the table below for the approximate charges.

(Different time frame / countries / package size has different price.)

### Delivery Method

> Global Common Shipment by DHL / UPS / FedEx / TNT / EMS / SF we support.

> Others more shipping ways, please get in touch with your customer manager.

Common Countries Logistic Time Reference		
Region	Country	Logistic Time(Day)
America	United States	5
	Brazil	7
Europe	Germany	5
	United Kingdom	4
	Italy	5
Oceania	Australia	6
	New Zealand	7
Asia	India	6
	Japan	7
Middle East	Israel	6

DHL & FedEx Shipment Charges Reference	
Shipment charges(KG)	Reference DHL(USD\$)
0.00kg-1.00kg	USD\$60.00
1.00kg-2.00kg	USD\$70.00
2.00kg-3.00kg	USD\$80.00

Note: The above table is for reference only. There may have some data bias for the uncontrollable factors.

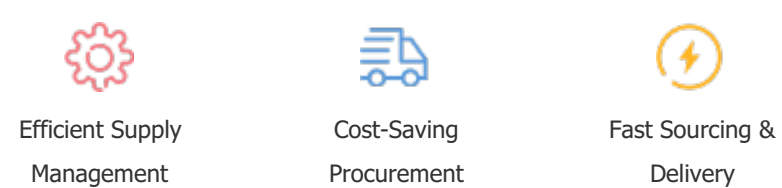
Contact us if you have any questions.

## Payment Support

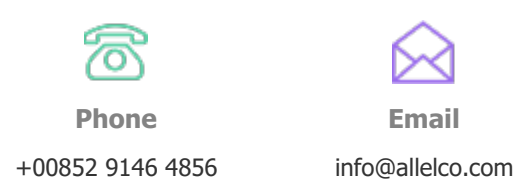
The payment method can be chosen from the methods shown below:  
Wire Transfer (T/T, Bank Transfer), Western Union, Credit card,  
PayPal.



## Your Faithful Supply Chain Partner -



Contact us if you have any questions.



+00852 9146 4856

info@allelco.com

## Certifications & Memberships



View More