



XC2S100E-6FT256C

Manufacturer Part Number	XC2S100E-6FT256C
Manufacturer	AMD Xilinx
Allelco Part Number	32D-XC2S100E-6FT256C
ECAD Model	Request Free CAD Models
Parts Description	IC FPGA 182 I/O 256FTBGA
Package	256-LBGA
Data sheet	Cylindrical Battery Holders.pdf



Get a Quote

XC2S100E-6FT256C - AMD.New Original in Stock. Download Linear Technology XC2S100E-6FT256C datasheet/specifications on AllelcoElec.com.
Request a quote for XC2S100E-6FT256C, please send us email: info@allelco.com

Specifications

XC2S100E-6FT256C Tech Specifications
XC2S100E-6FT256C - AMD technical specifications, attributes, parameters

Product Attribute	Attribute Value	Product Attribute	Attribute Value
Manufacturer	AMD Xilinx	Operating Temperature	0°C ~ 85°C (TJ)
Voltage - Supply	1.71V ~ 1.89V	Number of Logic Elements/Cells	2700
Total RAM Bits	40960	Number of LABs/CLBs	600
Supplier Device Package	256-FTBGA (17x17)	Number of I/O	182
Series	Spartan®-IIE	Number of Gates	100000
Package / Case	256-LBGA	Mounting Type	Surface Mount
Package	Tray	Base Product Number	XC2S100E

Parts with Similar Specifications

The three parts on the right have similar specifications to AMD XC2S100E-6FT256C

Product Attribute	NO PICTURE			
Part Number	XC2S100E-6FT256C	XC2S100-6PQ208C	XC2S100-6TQG144C	XC2S100-6TQ144C
Manufacturer	AMD	AMD	AMD	AMD
Number of Logic Elements/Cells	2700	2700	2700	2700
Package	Tray	Tray	Tray	Tray
Package / Case	256-LBGA	208-BFQFP	144-LQFP	144-LQFP
Base Product Number	XC2S100E	XC2S100	XC2S100	XC2S100
Supplier Device Package	256-FTBGA (17x17)	208-PQFP (28x28)	144-TQFP (20x20)	144-TQFP (20x20)
Number of Gates	100000	100000	100000	100000
Voltage - Supply	1.71V ~ 1.89V	2.375V ~ 2.625V	2.375V ~ 2.625V	2.375V ~ 2.625V
Mounting Type	Surface Mount	Surface Mount	Surface Mount	Surface Mount
Number of LABs/CLBs	600	600	600	600
Series	Spartan®-IIE	Spartan®-II	Spartan®-II	Spartan®-II
Number of I/O	182	140	92	92
Operating Temperature	0°C ~ 85°C (TJ)	0°C ~ 85°C (TJ)	0°C ~ 85°C (TJ)	0°C ~ 85°C (TJ)
Total RAM Bits	40960	40960	40960	40960

XC2S100E-6FT256C Datasheet PDF

Download XC2S100E-6FT256C pdf datasheets and AMD documentation for XC2S100E-6FT256C - AMD.

Datasheets

[Cylindrical Battery Holders.pdf](#)

Environmental Information

[Xilinx REACH211 Cert.pdf](#)

PCN Obsolescence/ EOL

[Spartan, Virtex, XC17V00 24/Apr/2013.pdf](#)

Customers Also Interested in

Recommended Products

XC2S100-6PQ208C	XC2S100E-6PQG208	XC2S100E-6FTG256	XC2S100E-6FT256I	XC2S100-6TQG144C	XC2S100-6TQ144C
AMD IC FPGA 140 I/O 208QFP	AMD Xilinx	AMD Xilinx	AMD Xilinx	AMD IC FPGA 92 I/O 144TQFP	AMD IC FPGA 92 I/O 144TQFP



XC2S100E-6PQ208I

AMD Xilinx

XC2S100E-6FTG256I

AMD Xilinx

XC2S100E-6PQ208C

AMD
IC FPGA 146 I/O 208QFP

XC2S100E-6FG456I

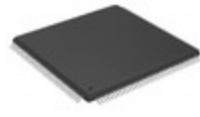
AMD Xilinx

XC2S100E-6PQG208C

AMD
IC FPGA 146 I/O 208QFP

XC2S100-6PQG208C

AMD
IC FPGA 140 I/O 208QFP



XC2S100E-6PQG208I

AMD Xilinx

XC2S100E-6TQ144C

AMD
IC FPGA 102 I/O 144TQFP

XC2S100E-6FTG256C

AMD
IC FPGA 182 I/O 256FTBGA

XC2S100-6FT256I

AMD Xilinx

XC2S100E-6FG456C

AMD Xilinx

XC2S100E-6FGG456C

AMD Xilinx

Shipment

Delivery Time

In-stock items can be shipped within 24 hours. Some parts will be arranged for delivery within 1-2 days from the date all items arrive at our warehouse. And Allelco ships order once a day at about 17:00, except Sunday. Once the goods are shipped, the estimated delivery time depends on the shipping methods and Delivery destination. The table below shows are the logistic time for some common countries.

Delivery Cost

> Use your express account for shipment if you have one.

> Use our account for the shipment. Refer to the table below for the approximate charges.

(Different time frame / countries / package size has different price.)

Delivery Method

> Global Common Shipment by DHL / UPS / FedEx / TNT / EMS / SF we support.

> Others more shipping ways, please get in touch with your customer manager.

Common Countries Logistic Time Reference

Region	Country	Logistic Time(Day)
America	United States	5
	Brazil	7
Europe	Germany	5
	United Kingdom	4
	Italy	5
Oceania	Australia	6
	New Zealand	7
Asia	India	6
	Japan	7
Middle East	Israel	6

DHL & FedEx Shipment Charges Reference

Shipment charges(KG)	Reference DHL(USD\$)
0.00kg-1.00kg	USD\$60.00
1.00kg-2.00kg	USD\$70.00
2.00kg-3.00kg	USD\$80.00

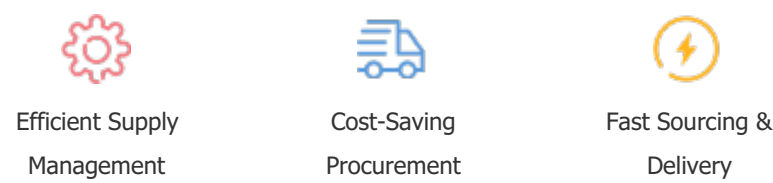
Note: The above table is for reference only. There may have some data bias for the uncontrollable factors. Contact us if you have any questions.

Payment Support

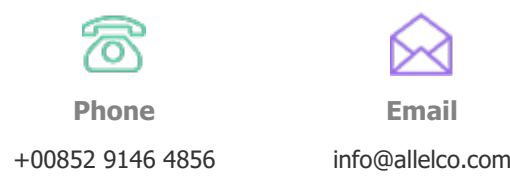
The payment method can be chosen from the methods shown below:
Wire Transfer (T/T, Bank Transfer), Western Union, Credit card, PayPal.



Your Faithful Supply Chain Partner -



Contact us if you have any questions.



Certifications & Memberships



[View More](#)



Contact us

Address: Flat/Rm C 13/F Harvard Commercial Building 105-111 Thomson Road, Wan Chai, Hong Kong

Phone: +00852 9146 4856

Fax: +00852 3010 8510

Email: info@Allelco.com

Copyright © 2012-2023 AllelcoElec.com. All rights reserved.