



Image may be representation.
See specifications for product details.



MAX44009EDT+T

Manufacturer Part Number	MAX44009EDT+T
Manufacturer	Maxim Integrated
Allelco Part Number	32D-MAX44009EDT+T
ECAD Model	Request Free CAD Models
Parts Description	SENSOR OPT AMBIENT 6OTDFN
Package	6-UDFN Exposed Pad
Data sheet	MAX44009.pdf
RoHs Status	ROHS3 Compliant

Get a Quote

MAX44009EDT+T - Analog Devices Inc./Maxim Integrated.New Original in Stock. Download Linear Technology MAX44009EDT+T datasheet/specifications on AllelcoElec.com.
Request a quote for MAX44009EDT+T, please send us email: info@allelco.com

Specifications

MAX44009EDT+T Tech Specifications
MAX44009EDT+T - Analog Devices Inc./Maxim Integrated technical specifications, attributes, parameters

Product Attribute	Attribute Value	Product Attribute	Attribute Value
Manufacturer	Maxim Integrated	Package / Case	6-UDFN Exposed Pad
Wavelength	-	Package	Tape & Reel (TR)
Voltage - Supply	1.7V ~ 3.6V	Output Type	I ² C
Type	Ambient	Operating Temperature	-40°C ~ 85°C
Supplier Device Package	6-OTDFN (2x2)	Mounting Type	Surface Mount
Series	-	Base Product Number	MAX44009
Proximity Detection	No		

Parts with Similar Specifications

The three parts on the right have similar specifications to Analog Devices Inc./Maxim Integrated MAX44009EDT+T

Product Attribute				
Part Number	MAX44009EDT+T	MAX44009EDT+	MAX44000GDT+	MAX44000GDT+T
Manufacturer	Analog Devices Inc./Maxim Integrated	Analog Devices Inc./Maxim Integrated	Analog Devices Inc./Maxim Integrated	Analog Devices Inc./Maxim Integrated
Package / Case	6-UDFN Exposed Pad	6-UDFN Exposed Pad	-	6-UDFN Exposed Pad
Output Type	I ² C	I ² C	-	I ² C
Voltage - Supply	1.7V ~ 3.6V	1.7V ~ 3.6V	-	1.7V ~ 3.6V
Package	Tape & Reel (TR)	Bulk	Tube	Tape & Reel (TR)
Series	-	-	*	-
Wavelength	-	-	-	-
Mounting Type	Surface Mount	Surface Mount	-	Surface Mount
Operating Temperature	-40°C ~ 85°C	-40°C ~ 85°C	-	-40°C ~ 105°C
Proximity Detection	No	No	-	Yes
Supplier Device Package	6-OTDFN (2x2)	6-OTDFN (2x2)	-	6-OTDFN (2x2)
Type	Ambient	Ambient	-	Ambient
Base Product Number	MAX44009	MAX440	MAX440	MAX440

MAX44009EDT+T Datasheet PDF

Download MAX44009EDT+T pdf datasheets and Analog Devices Inc./Maxim Integrated documentation for MAX44009EDT+T - Analog Devices Inc./Maxim Integrated.

Datasheets

[MAX44009.pdf](#)

Environmental Information

[Maxim Integrated REACH.pdf](#)

[Maxim Integrated RoHS Cert.pdf](#)

[Red Phosphorous Certificate.pdf](#)

Other Related Documents

[Cylindrical Battery Holders.pdf](#)

Application Notes

[Adding Intelligence to LED Lighting.pdf](#)

PCN Obsolescence/ EOL

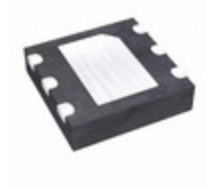
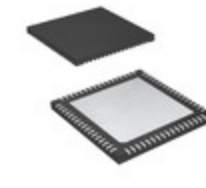
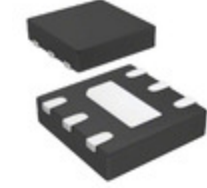
[Cylindrical Battery Holders.pdf](#)

Customers Also Interested in

Recommended Products

**MAX44008EDT+**Analog Devices Inc./Maxim Integrated
IC MAX44008EDT+**MAX4400AXK**Analog Devices Inc./Maxim Integrated
IC OPAMP GP 1 CIRCUIT SC70-5**MAX44009EDT+**Analog Devices Inc./Maxim Integrated
IC AMBIENT LIGHT SENSOR TDFN**MAX439CPA**

Analog Devices / Maxim Integrated

MAX44006EDT+TAnalog Devices Inc./Maxim Integrated
IC AMBIENT/PROXIMITY SENS UTDFN**MAX4401AXT+TG24**Analog Devices Inc./Maxim Integrated
IC OPAMP GP 1 CIRCUIT SC70-6**MAX44008EDT+T**Analog Devices Inc./Maxim Integrated
IC AMBIENT/PROXIMITY SENS TDFN**MAX44000GDT+**Analog Devices Inc./Maxim Integrated
SENSOR OPT AMBIENT 60-OTDFN**MAX4400AUK+T**Analog Devices Inc./Maxim Integrated
IC OPAMP GP 1 CIRCUIT SOT23-5**MAX4400AXK-T**Analog Devices Inc./Maxim Integrated
IC OPAMP GP 1 CIRCUIT SC70-5**MAX4400AXK+T**Analog Devices Inc./Maxim Integrated
IC OPAMP GP 1 CIRCUIT SC70-5**MAX4401AXT**Analog Devices Inc./Maxim Integrated
IC OPAMP GP 1 CIRCUIT SC70-6**MAX4401AXT+T**Analog Devices Inc./Maxim Integrated
IC OPAMP GP 1 CIRCUIT SC70-6**MAX44000GDT+T**Analog Devices Inc./Maxim Integrated
SENSOR OPT AMBIENT 60TDFN**MAX4400AUK-T**Analog Devices Inc./Maxim Integrated
IC OPAMP GP 1 CIRCUIT SOT23-5**MAX4401AXT-T**Analog Devices Inc./Maxim Integrated
IC OPAMP GP 1 CIRCUIT SC70-6**MAX4399CTK+TD**Analog Devices Inc./Maxim Integrated
IC AUDIO / VIDEO SWITCH 68TQFN**MAX44004GDT+T**Analog Devices Inc./Maxim Integrated
SENSOR OPT 555NM AMBIENT 60TDFN

Shipment

Delivery Time

In-stock items can be shipped within 24 hours. Some parts will be arranged for delivery within 1-2 days from the date all items arrive at our warehouse. And Allelco ships order once a day at about 17:00, except Sunday. Once the goods are shipped, the estimated delivery time depends on the shipping methods and Delivery destination. The table below shows are the logistic time for some common countries.

Delivery Cost

> Use your express account for shipment if you have one.

> Use our account for the shipment. Refer to the table below for the approximate charges.

(Different time frame / countries / package size has different price.)

Delivery Method

> Global Common Shipment by DHL / UPS / FedEx / TNT / EMS / SF we support.

> Others more shipping ways, please get in touch with your customer manager.

Common Countries Logistic Time Reference

Region	Country	Logistic Time(Day)
America	United States	5
	Brazil	7
Europe	Germany	5
	United Kingdom	4
	Italy	5
Oceania	Australia	6
	New Zealand	7
Asia	India	6
	Japan	7
Middle East	Israel	6

DHL & FedEx Shipment Charges Reference

Shipment charges(KG)	Reference DHL(USD\$)
0.00kg-1.00kg	USD\$60.00
1.00kg-2.00kg	USD\$70.00
2.00kg-3.00kg	USD\$80.00

Note: The above table is for reference only. There may have some data bias for the uncontrollable factors.
Contact us if you have any questions.

Payment Support

The payment method can be chosen from the methods shown below:

Wire Transfer (T/T, Bank Transfer), Western Union, Credit card, PayPal.



Your Faithful Supply Chain Partner -



Efficient Supply Management



Cost-Saving Procurement



Fast Sourcing & Delivery

Contact us if you have any questions.



Phone

+00852 9146 4856



Email

info@allelco.com

Certifications & Memberships



[View More](#)

Contact us

Address: Flat/Rm C 13/F Harvard Commercial Building 105-111 Thomson Road, Wan Chai, Hong Kong

Phone: +00852 9146 4856

Fax: +00852 3010 8510

Email: info@Allelco.com