



XC4VLX40-10FF668I

| | |
|--------------------------|--------------------------|
| Manufacturer Part Number | XC4VLX40-10FF668I |
| Manufacturer | AMD Xilinx |
| Allelco Part Number | 32D-XC4VLX40-10FF668I |
| ECAD Model | Request Free CAD Models |
| Parts Description | IC FPGA 448 I/O 668FCBGA |
| Package | 668-BBGA, FCBGA |
| Data sheet | XC4VLX40-10FF668I.pdf |



Get a Quote

XC4VLX40-10FF668I - AMD.New Original in Stock. Download Linear Technology XC4VLX40-10FF668I datasheet/specifications on AllelcoElec.com.
Request a quote for XC4VLX40-10FF668I, please send us email: info@allelco.com

Specifications

XC4VLX40-10FF668I Tech Specifications
XC4VLX40-10FF668I - AMD technical specifications, attributes, parameters

| Product Attribute | Attribute Value | Product Attribute | Attribute Value |
|-------------------------|-------------------|--------------------------------|--------------------|
| Manufacturer | AMD Xilinx | Operating Temperature | -40°C ~ 100°C (TJ) |
| Voltage - Supply | 1.14V ~ 1.26V | Number of Logic Elements/Cells | 41472 |
| Total RAM Bits | 1769472 | Number of LABs/CLBs | 4608 |
| Supplier Device Package | 668-FCBGA (27x27) | Number of I/O | 448 |
| Series | Virtex®-4 LX | Mounting Type | Surface Mount |
| Package / Case | 668-BBGA, FCBGA | Base Product Number | XC4VLX40 |
| Package | Tray | | |

Parts with Similar Specifications

The three parts on the right have similar specifications to AMD XC4VLX40-10FF668I

| Product Attribute | | | | |
|--------------------------------|--------------------|------------------------------------|------------------------------------|------------------------------------|
| Part Number | XC4VLX40-10FF668I | XC4VLX40-11FFG668C | XC4VLX25-11FFG668I | XC4VLX40-10FFG668I |
| Manufacturer | AMD | AMD | AMD | AMD |
| Number of Logic Elements/Cells | 41472 | 41472 | 24192 | 41472 |
| Mounting Type | Surface Mount | Surface Mount | Surface Mount | Surface Mount |
| Supplier Device Package | 668-FCBGA (27x27) | 668-FCBGA (27x27) | 668-FCBGA (27x27) | 668-FCBGA (27x27) |
| Package / Case | 668-BBGA, FCBGA | 668-BBGA, FCBGA | 668-BBGA, FCBGA | 668-BBGA, FCBGA |
| Operating Temperature | -40°C ~ 100°C (TJ) | 0°C ~ 85°C (TJ) | -40°C ~ 100°C (TJ) | -40°C ~ 100°C (TJ) |
| Package | Tray | Tray | Tray | Tray |
| Base Product Number | XC4VLX40 | XC4VLX40 | XC4VLX25 | XC4VLX40 |
| Number of I/O | 448 | 448 | 448 | 448 |
| Voltage - Supply | 1.14V ~ 1.26V | 1.14V ~ 1.26V | 1.14V ~ 1.26V | 1.14V ~ 1.26V |
| Series | Virtex®-4 LX | Virtex®-4 LX | Virtex®-4 LX | Virtex®-4 LX |
| Total RAM Bits | 1769472 | 1769472 | 1327104 | 1769472 |
| Number of LABs/CLBs | 4608 | 4608 | 2688 | 4608 |

XC4VLX40-10FF668I Datasheet PDF

Download XC4VLX40-10FF668I pdf datasheets and AMD documentation for XC4VLX40-10FF668I - AMD.

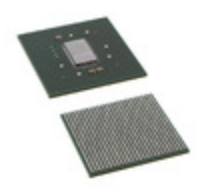
Environmental Information

[Xilinx REACH211 Cert.pdf](#)

Customers Also Interested in

Recommended Products

| | | | | | |
|---------------------------------|-------------------------------------|---------------------------------|---------------------------------|----------------------------------|----------------------------------|
| | | | | | |
| XC4VLX40-11FFG668C | XC4VLX25-11FFG668I | XC4VLX40-10FFG668I | XC4VLX25-12FFG668C | XC4VLX25-11FFG668C | XC4VLX40-10FF1148I |
| AMD IC FPGA 448 I/O 668FCBGA | AMD IC FPGA 448 I/O 668FCBGA | AMD IC FPGA 448 I/O 668FCBGA | AMD IC FPGA 448 I/O 668FCBGA | AMD IC FPGA 448 I/O 668FCBGA | AMD IC FPGA 640 I/O 1148FCBGA |
| | | | | | |
| XC4VLX40-10FF668C | XC4VLX40-11FF1148C | XC4VLX40-10FFG668C | XC4VLX25-11FF668I | XC4VLX40-10FFG1148I | XC4VLX40-10FFG1148C |
| AMD IC FPGA 448 I/O 668FCBGA | Xilinx IC FPGA 640 I/O 1148FCBGA | AMD IC FPGA 448 I/O 668FCBGA | AMD IC FPGA 448 I/O 668FCBGA | AMD IC FPGA 640 I/O 1148FCBGA | AMD IC FPGA 640 I/O 1148FCBGA |



XC4VLX40-11FF668I

AMD
IC FPGA 448 I/O 668FCBGA

XC4VLX25-11SFG363I

AMD
IC FPGA 240 I/O 363FCBGA

XC4VLX40-11FFG668I

AMD
IC FPGA 448 I/O 668FCBGA

XC4VLX40-10FF1148C

AMD
IC FPGA 640 I/O 1148FCBGA

XC4VLX40-11FF1148I

AMD
IC FPGA 640 I/O 1148FCBGA

XC4VLX25-11FFG676C

AMD
IC FPGA 448 I/O 676FCBGA

Shipment

Delivery Time

In-stock items can be shipped within 24 hours. Some parts will be arranged for delivery within 1-2 days from the date all items arrive at our warehouse. And Allelco ships order once a day at about 17:00, except Sunday. Once the goods are shipped, the estimated delivery time depends on the shipping methods and Delivery destination. The table below shows are the logistic time for some common countries.

Delivery Cost

> Use your express account for shipment if you have one.

> Use our account for the shipment. Refer to the table below for the approximate charges.

(Different time frame / countries / package size has different price.)

Delivery Method

> Global Common Shipment by DHL / UPS / FedEx / TNT / EMS / SF we support.

> Others more shipping ways, please get in touch with your customer manager.

Common Countries Logistic Time Reference

| Region | Country | Logistic Time(Day) |
|-------------|----------------|--------------------|
| America | United States | 5 |
| | Brazil | 7 |
| Europe | Germany | 5 |
| | United Kingdom | 4 |
| | Italy | 5 |
| Oceania | Australia | 6 |
| | New Zealand | 7 |
| Asia | India | 6 |
| | Japan | 7 |
| Middle East | Israel | 6 |

DHL & FedEx Shipment Charges Reference

| Shipment charges(KG) | Reference DHL(USD\$) |
|----------------------|----------------------|
| 0.00kg-1.00kg | USD\$60.00 |
| 1.00kg-2.00kg | USD\$70.00 |
| 2.00kg-3.00kg | USD\$80.00 |

Note: The above table is for reference only. There may have some data bias for the uncontrollable factors.
Contact us if you have any questions.

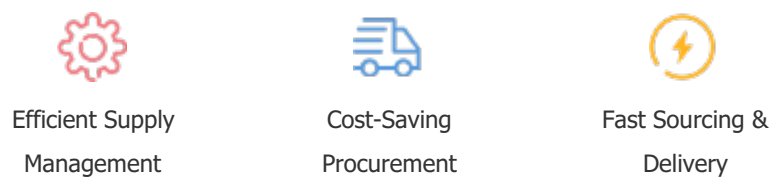
Payment Support

The payment method can be chosen from the methods shown below:

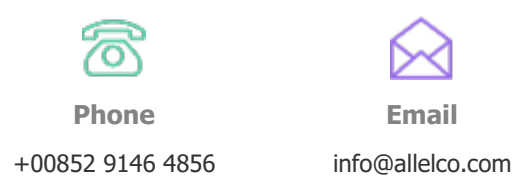
Wire Transfer (T/T, Bank Transfer), Western Union, Credit card, PayPal.



Your Faithful Supply Chain Partner -



Contact us if you have any questions.



Certifications & Memberships



[View More](#)



Contact us

Address: Flat/Rm C 13/F Harvard Commercial Building 105-111 Thomson Road, Wan Chai, Hong Kong

Phone: +00852 9146 4856

Fax: +00852 3010 8510

Email: info@Allelco.com

Copyright © 2012-2023 AllelcoElec.com. All rights reserved.