

Image may be representation.  
See specifications for product details.



## MAX16820ATT+T

Manufacturer Part Number	<b>MAX16820ATT+T</b>
Manufacturer	<b>Maxim Integrated</b>
Allelco Part Number	32D-MAX16820ATT+T
ECAD Model	Request Free CAD Models
Parts Description	IC LED DRIVER CTRLR PWM 6TDFN
Package	6-WDFN Exposed Pad
Data sheet	<b>Cylindrical Battery Holders.pdf</b>
RoHs Status	<b>ROHS3 Compliant</b>

**Get a Quote**

MAX16820ATT+T - Analog Devices Inc./Maxim Integrated.New Original in Stock. Download Linear Technology MAX16820ATT+T datasheet/specifications on AllelcoElec.com.  
Request a quote for MAX16820ATT+T, please send us email: [info@allelco.com](mailto:info@allelco.com)

## Specifications

MAX16820ATT+T Tech Specifications

MAX16820ATT+T - Analog Devices Inc./Maxim Integrated technical specifications, attributes, parameters

Product Attribute	Attribute Value	Product Attribute	Attribute Value
Manufacturer	Maxim Integrated	Operating Temperature	-40°C ~ 125°C (TA)
Voltage - Supply (Min)	4.5V	Number of Outputs	1
Voltage - Supply (Max)	28V	Mounting Type	Surface Mount
Voltage - Output	-	Internal Switch(s)	No
Type	DC DC Controller	Frequency	2MHz
Topology	Step-Down (Buck)	Dimming	PWM
Supplier Device Package	6-TDFN (3x3)	Current - Output / Channel	-
Series	-	Base Product Number	MAX16820
Package / Case	6-WDFN Exposed Pad	Applications	Lighting
Package	Tape & Reel (TR)		

## Parts with Similar Specifications

The three parts on the right have similar specifications to Analog Devices Inc./Maxim Integrated MAX16820ATT+T

Product Attribute				
Part Number	MAX16820ATT+T	MAX16820ATT+	MAX16822AASA/V+T	MAX16822AASA+
Manufacturer	Analog Devices Inc./Maxim Integrated	Analog Devices Inc./Maxim Integrated	Analog Devices Inc./Maxim Integrated	Analog Devices Inc./Maxim Integrated
Number of Outputs	1	1	1	1
Current - Output / Channel	-	-	350mA	350mA
Package / Case	6-WDFN Exposed Pad	6-WDFN Exposed Pad	8-SOIC (0.154", 3.90mm Width)	8-SOIC (0.154", 3.90mm Width)
Voltage - Output	-	-	-	-
Package	Tape & Reel (TR)	Strip	Tape & Reel (TR)	Tube
Topology	Step-Down (Buck)	Step-Down (Buck)	Step-Down (Buck)	Step-Down (Buck)
Frequency	2MHz	2MHz	2MHz	2MHz
Base Product Number	MAX16820	MAX16820	MAX16822	MAX16822
Applications	Lighting	Lighting	Automotive, Lighting	Lighting
Voltage - Supply (Max)	28V	28V	65V	65V
Dimming	PWM	PWM	PWM	PWM
Mounting Type	Surface Mount	Surface Mount	Surface Mount	Surface Mount
Series	-	-	Automotive, AEC-Q100	-
Internal Switch(s)	No	No	Yes	Yes
Supplier Device Package	6-TDFN (3x3)	6-TDFN (3x3)	8-SOIC	8-SOIC
Type	DC DC Controller	DC DC Controller	DC DC Regulator	DC DC Regulator
Voltage - Supply (Min)	4.5V	4.5V	6.5V	6.5V
Operating Temperature	-40°C ~ 125°C (TA)	-40°C ~ 125°C (TA)	-40°C ~ 125°C (TA)	-40°C ~ 125°C (TA)

## MAX16820ATT+T Datasheet PDF

Download MAX16820ATT+T pdf datasheets and Analog Devices Inc./Maxim Integrated documentation for MAX16820ATT+T - Analog Devices Inc./Maxim Integrated.

### Datasheets

Cylindrical Battery Holders.pdf

### Environmental Information

Maxim Integrated REACH.pdf

Maxim Integrated RoHS Cert.pdf

Red Phosphorous Certificate.pdf

Material Declaration MAX16820ATT+T.pdf

### Part Numbering Guide

Part Numbering System.pdf

## Application Notes

DC Voltage Controls PWM Dimming of High-Brightness.pdf

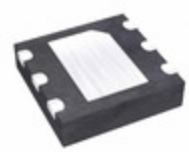
Diagnose LEDs by Monitoring the Switch-Mode Duty C.pdf

LEDs Allow New Remote-Controlled Lighting Applicat.pdf

LEDs for General Lighting: What They Offer and The.pdf

## Customers Also Interested in

### Recommended Products



#### MAX16820ATT+

Analog Devices Inc./Maxim Integrated  
IC LED DRIVER CTRLR PWM 6TDFN



#### MAX16822AASA/V+T

Analog Devices Inc./Maxim Integrated  
IC LED DRV RGLTR PWM 350MA 8SOIC



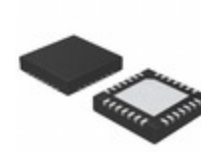
#### MAX16822AASA+

Analog Devices Inc./Maxim Integrated  
IC LED DRV RGLTR PWM 350MA 8SOIC



#### MAX16821CATI

Analog Devices / Maxim Integrated



#### MAX16821CATI+T

Analog Devices Inc./Maxim Integrated  
IC LED DRIVER CTRLR PWM 28TQFN



#### MAX16815ASA+T

Analog Devices Inc./Maxim Integrated  
IC LED DRV LIN PWM 100MA 8SOIC



#### MAX1681ESA+T

Analog Devices Inc./Maxim Integrated  
IC REG CHARGE PUMP INV 8SOIC



#### MAX16815ASA

Analog Devices / Maxim Integrated



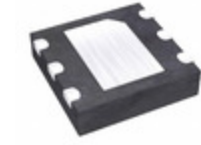
#### MAX1681ESA+

Analog Devices Inc./Maxim Integrated  
IC REG CHARGE PUMP INV 8SOIC



#### MAX16822AASA/V

Analog Devices / Maxim Integrated



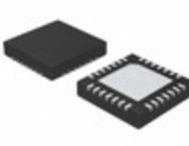
#### MAX16815ATT+T

Analog Devices Inc./Maxim Integrated  
IC LED DRV LIN PWM 100MA 6TDFN



#### MAX16822AASA+T

Analog Devices Inc./Maxim Integrated  
IC LED DRV RGLTR PWM 350MA 8SOIC



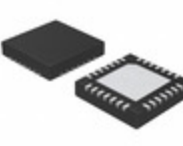
#### MAX16821AATI+T

Analog Devices Inc./Maxim Integrated  
IC LED DRIVER CTRLR PWM 28TQFN



#### MAX1681ESA

Analog Devices Inc./Maxim Integrated  
IC REG CHARGE PUMP INV 8SOIC



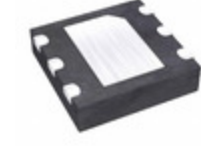
#### MAX16821BATI+T

Analog Devices Inc./Maxim Integrated  
IC LED DRIVER CTRLR PWM 28TQFN



#### MAX16821BA

Analog Devices / Maxim Integrated



#### MAX16819ATT+T

Analog Devices Inc./Maxim Integrated  
IC LED DRIVER CTRLR PWM 6TDFN



#### MAX16814UUP+TG

Analog Devices / Maxim Integrated

## Shipment

### Delivery Time

In-stock items can be shipped within 24 hours. Some parts will be arranged for delivery within 1-2 days from the date all items arrive at our warehouse. And Allelco ships order once a day at about 17:00, except Sunday. Once the goods are shipped, the estimated delivery time depends on the shipping methods and Delivery destination. The table below shows are the logistic time for some common countries.

### Delivery Cost

> Use your express account for shipment if you have one.

> Use our account for the shipment. Refer to the table below for the approximate charges.

(Different time frame / countries / package size has different price.)

### Delivery Method

> Global Common Shipment by DHL / UPS / FedEx / TNT / EMS / SF we support.

> Others more shipping ways, please get in touch with your customer manager.

Common Countries Logistic Time Reference

Region	Country	Logistic Time(Day)
America	United States	5
	Brazil	7
Europe	Germany	5
	United Kingdom	4
	Italy	5
Oceania	Australia	6
	New Zealand	7
Asia	India	6
	Japan	7
Middle East	Israel	6

DHL & FedEx Shipment Charges Reference

Shipment charges(KG)	Reference DHL(USD\$)
0.00kg-1.00kg	USD\$60.00
1.00kg-2.00kg	USD\$70.00
2.00kg-3.00kg	USD\$80.00

Note: The above table is for reference only. There may have some data bias for the uncontrollable factors.  
Contact us if you have any questions.

## Payment Support

The payment method can be chosen from the methods shown below:  
Wire Transfer (T/T, Bank Transfer), Western Union, Credit card, PayPal.



## Your Faithful Supply Chain Partner -



Efficient Supply Management



Cost-Saving Procurement



Fast Sourcing & Delivery

Contact us if you have any questions.



Phone

+00852 9146 4856



Email

info@allelco.com

## Certifications & Memberships



View More

