



Image may be representation.
See specifications for product details.



MAX4466EXK

Manufacturer Part Number	MAX4466EXK
Manufacturer	Maxim Integrated
Allelco Part Number	32D-MAX4466EXK
ECAD Model	PCB Symbol, Footprint & 3D Model
Parts Description	IC AMP CLASS AB MONO SC70-5
Package	5-TSSOP, SC-70-5, SOT-353
Data sheet	MAX4465-69.pdf

Get a Quote

MAX4466EXK - Analog Devices Inc./Maxim Integrated. New Original in Stock. Download Linear Technology MAX4466EXK datasheet/specifications on AllelcoElec.com. Request a quote for MAX4466EXK, please send us email: info@allelco.com

Specifications

MAX4466EXK Tech Specifications
MAX4466EXK - Analog Devices Inc./Maxim Integrated technical specifications, attributes, parameters

Product Attribute	Attribute Value	Product Attribute	Attribute Value
Manufacturer	Maxim Integrated	Output Type	1-Channel (Mono)
Voltage - Supply	2.4V ~ 5.5V	Operating Temperature	-40°C ~ 85°C (TA)
Type	Class AB	Mounting Type	Surface Mount
Supplier Device Package	SC-70-5	Max Output Power x Channels @ Load	-
Series	-	Features	Microphone
Package / Case	5-TSSOP, SC-70-5, SOT-353	Base Product Number	MAX4466
Package	Bulk		

Parts with Similar Specifications

The three parts on the right have similar specifications to Analog Devices Inc./Maxim Integrated MAX4466EXK

Product Attribute				
Part Number	MAX4466EXK	MAX4468EKA+T	MAX4465EXK-T	MAX4466EUK+T
Manufacturer	Analog Devices Inc./Maxim Integrated	Analog Devices Inc./Maxim Integrated	Analog Devices Inc./Maxim Integrated	Analog Devices Inc./Maxim Integrated
Package	Bulk	Tape & Reel (TR)	Tape & Reel (TR)	Tape & Reel (TR)
Max Output Power x Channels @ Load	-	-	-	-
Series	-	-	-	-
Package / Case	5-TSSOP, SC-70-5, SOT-353	SOT-23-8	5-TSSOP, SC-70-5, SOT-353	SC-74A, SOT-753
Output Type	1-Channel (Mono)	1-Channel (Mono)	1-Channel (Mono)	1-Channel (Mono)
Type	Class AB	Class AB	Class AB	Class AB
Base Product Number	MAX4466	MAX4468	MAX4465	MAX4466
Voltage - Supply	2.4V ~ 5.5V	2.4V ~ 5.5V	2.4V ~ 5.5V	2.4V ~ 5.5V
Mounting Type	Surface Mount	Surface Mount	Surface Mount	Surface Mount
Operating Temperature	-40°C ~ 85°C (TA)	-40°C ~ 85°C (TA)	-40°C ~ 85°C (TA)	-40°C ~ 85°C (TA)
Supplier Device Package	SC-70-5	SOT-23-8	SC-70-5	SOT-23-5
Features	Microphone	Microphone, Shutdown	Microphone	-

MAX4466EXK Datasheet PDF

Download MAX4466EXK pdf datasheets and Analog Devices Inc./Maxim Integrated documentation for MAX4466EXK - Analog Devices Inc./Maxim Integrated.

Datasheets

[MAX4465-69.pdf](#)

Environmental Information

[Maxim Integrated REACH.pdf](#)

[Maxim Integrated RoHS Cert.pdf](#)

Customers Also Interested in

Recommended Products

MAX4468EKA+T	MAX4464EXK+T	MAX4465EXK-T	MAX4466EUK+T	MAX4468EKA	MAX4465EUK+T
Analog Devices Inc./Maxim Integrated IC AMP CLASS AB MONO SOT23-8	Analog Devices Inc./Maxim Integrated IC OPAMP GP 1 CIRCUIT SC70-5	Analog Devices Inc./Maxim Integrated IC AMP CLASS AB MONO SC70-5	Analog Devices Inc./Maxim Integrated IC PREAMP MICROPHONE SOT23-5	Analog Devices Inc./Maxim Integrated MICROPHONE PREAMPLIFIER	Analog Devices Inc./Maxim Integrated IC PREAMP MICROPHONE SOT23-5

MAX4462TEUT+T

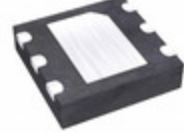
Analog Devices Inc./Maxim Integrated
IC INST AMP 1 CIRCUIT SOT6

**MAX4467EKA+T**

Analog Devices Inc./Maxim Integrated
IC AMP CLASS AB MONO SOT23-8

MAX4466EXK+T

Analog Devices Inc./Maxim Integrated
IC AMP CLASS AB MONO SC70-5

**MAX4462TETT+T**

Analog Devices Inc./Maxim Integrated
IC INST AMP 1 CIRCUIT 6TDFN

MAX4468EKA-T

Analog Devices Inc./Maxim Integrated
MICROPHONE PREAMPLIFIER

**MAX4468ESA**

Analog Devices / Maxim Integrated

MAX4465EXK+T

Analog Devices Inc./Maxim Integrated
IC AMP CLASS AB MONO SC70-5

**MAX4464EUK+T**

Analog Devices Inc./Maxim Integrated
IC OPAMP GP 1 CIRCUIT SOT23-5

MAX4467EKA-T

Analog Devices / Maxim Integrated

**MAX4466EUK-T**

Analog Devices / Maxim Integrated

MAX4468EKA+

Analog Devices / Maxim Integrated

**MAX4467EKA**

Analog Devices Inc./Maxim Integrated
MICROPHONE PREAMPLIFIER

Shipment**Delivery Time**

In-stock items can be shipped within 24 hours. Some parts will be arranged for delivery within 1-2 days from the date all items arrive at our warehouse. And Allelco ships order once a day at about 17:00, except Sunday. Once the goods are shipped, the estimated delivery time depends on the shipping methods and Delivery destination. The table below shows are the logistic time for some common countries.

Delivery Cost

> Use your express account for shipment if you have one.

> Use our account for the shipment. Refer to the table below for the approximate charges.

(Different time frame / countries / package size has different price.)

Delivery Method

> Global Common Shipment by DHL / UPS / FedEx / TNT / EMS / SF we support.

> Others more shipping ways, please get in touch with your customer manager.

Common Countries Logistic Time Reference		
Region	Country	Logistic Time(Day)
America	United States	5
	Brazil	7
Europe	Germany	5
	United Kingdom	4
	Italy	5
Oceania	Australia	6
	New Zealand	7
Asia	India	6
	Japan	7
Middle East	Israel	6

DHL & FedEx Shipment Charges Reference	
Shipment charges(KG)	Reference DHL(USD\$)
0.00kg-1.00kg	USD\$60.00
1.00kg-2.00kg	USD\$70.00
2.00kg-3.00kg	USD\$80.00

Note: The above table is for reference only. There may have some data bias for the uncontrollable factors.

Contact us if you have any questions.

Payment Support

The payment method can be chosen from the methods shown below:

Wire Transfer (T/T, Bank Transfer), Western Union, Credit card, PayPal.

**Your Faithful Supply Chain Partner -**

Efficient Supply Management



Cost-Saving Procurement



Fast Sourcing & Delivery

Contact us if you have any questions.



Phone

+00852 9146 4856



Email

info@allelco.com

Certifications & Memberships

[View More](#)

**Contact us**

Address: Flat/Rm C 13/F Harvard Commercial Building 105-111 Thomson Road, Wan Chai, Hong Kong

Phone: +00852 9146 4856

Fax: +00852 3010 8510

Email: info@Allelco.com

Copyright © 2012-2023 AllelcoElec.com. All rights reserved.