

Image may be representation.
See specifications for product details.



ADAU1401AWBSTZ-RL

Manufacturer Part Number	ADAU1401AWBSTZ-RL
Manufacturer	Analog Devices, Inc.
Allelco Part Number	32D-ADAU1401AWBSTZ-RL
ECAD Model	PCB Symbol, Footprint & 3D Mode
Parts Description	IC AUDIO PROC 28/56BIT 48LQFP
Package	48-LQFP
Data sheet	Cylindrical Battery Holders.pdf
RoHs Status	ROHS3 Compliant

[Get a Quote](#)

ADAU1401AWBSTZ-RL - Analog Devices Inc..New Original in Stock. Download Linear Technology ADAU1401AWBSTZ-RL datasheet/specifications on AllelcoElec.com. Request a quote for ADAU1401AWBSTZ-RL, please send us email: info@allelco.com

Specifications

ADAU1401AWBSTZ-RL Tech Specifications
ADAU1401AWBSTZ-RL - Analog Devices Inc. technical specifications, attributes, parameters

Product Attribute	Attribute Value	Product Attribute	Attribute Value
Manufacturer	Analog Devices, Inc.	Operating Temperature	-40°C ~ 105°C (TA)
Voltage - I/O	3.30V	On-Chip RAM	12kB
Voltage - Core	1.80V	Non-Volatile Memory	-
Type	Sigma	Mounting Type	Surface Mount
Supplier Device Package	48-LQFP (7x7)	Interface	I ² C, SPI
Series	Automotive, SigmaDSP®	Clock Rate	50MHz
Package / Case	48-LQFP	Base Product Number	ADAU1401
Package	Tape & Reel (TR)		

Parts with Similar Specifications

The three parts on the right have similar specifications to Analog Devices Inc. ADAU1401AWBSTZ-RL

Product Attribute				
Part Number	ADAU1401AWBSTZ-RL	ADAU1442YSVZ-3A-RL	ADAU1401YSTZ-RL	ADAU1445YSVZ-3A
Manufacturer	Analog Devices Inc.	Analog Devices Inc.	Analog Devices Inc.	Analog Devices Inc.
Supplier Device Package	48-LQFP (7x7)	100-TQFP-EP (14x14)	48-LQFP (7x7)	100-TQFP-EP (14x14)
On-Chip RAM	12kB	46kB	12kB	46kB
Mounting Type	Surface Mount	Surface Mount	Surface Mount	Surface Mount
Series	Automotive, SigmaDSP®	SigmaDSP®	SigmaDSP®	SigmaDSP®
Base Product Number	ADAU1401	ADAU1442	ADAU1401	ADAU1445
Clock Rate	50MHz	172MHz	50MHz	172MHz
Interface	I ² C, SPI	I ² C, SPI	I ² C, SPI	I ² C, SPI
Package / Case	48-LQFP	100-TQFP Exposed Pad	48-LQFP	100-TQFP Exposed Pad
Non-Volatile Memory	-	-	-	-
Voltage - I/O	3.30V	3.30V	3.30V	3.30V
Package	Tape & Reel (TR)	Tape & Reel (TR)	Tape & Reel (TR)	Tray
Type	Sigma	Sigma	Sigma	Sigma
Operating Temperature	-40°C ~ 105°C (TA)	-40°C ~ 105°C (TA)	-40°C ~ 105°C (TA)	-40°C ~ 105°C (TA)
Voltage - Core	1.80V	1.80V	1.80V	1.80V

ADAU1401AWBSTZ-RL Datasheet PDF

Download ADAU1401AWBSTZ-RL pdf datasheets and Analog Devices Inc. documentation for ADAU1401AWBSTZ-RL - Analog Devices Inc..

Datasheets

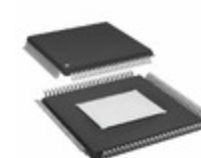
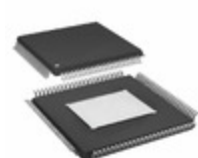
[Cylindrical Battery Holders.pdf](#)

PCN Assembly/Origin

[2.73KHz.pdf](#)

Customers Also Interested in

Recommended Products



ADAU1381BCBZ

ADI (Analog Devices, Inc.)

ADAU1442YSVZ-3A-RL

Analog Devices Inc.
IC SIGMADSP 28B 175MHZ 100TQFP

ADAU1401YSTZ-RL

Analog Devices Inc.
IC AUDIO PROC 28/56BIT 48LQFP

ADAU1372BCPZ

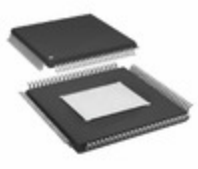
Analog Devices Inc.
IC CODEC LP W/HDHP AMP 40LFCSP

ADAU1445YSVZ-3A

Analog Devices Inc.
IC SIGMADSP 175MHZ 100TQFP

ADAU1331-03BCDZ-R7

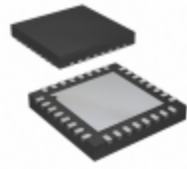
Analog Devices Inc.
IC CODEC 24BIT

**ADAU1442YSVZ-3A**

Analog Devices Inc.
IC SIGMADSP 28B 175MHZ 100TQFP

**ADAU1381BCBZ-RL7**

Analog Devices Inc.
IC AUDIO CODEC STEREO LN 30WLCSP

**ADAU1361BCPZ**

Analog Devices Inc.
IC CODEC 24B PLL 32LFCSP

**ADAU1373BCBZ-R7**

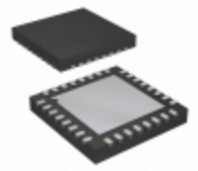
Analog Devices Inc.
IC CODEC LP W/HDPH AMP 81WLSCP

**ADAU1382BCPZ-R7**

ADI (Analog Devices, Inc.)

**ADAU1401YSTZ**

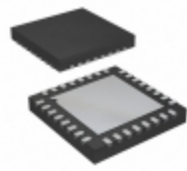
Analog Devices Inc.
IC AUDIO PROC 28/56BIT 48LQFP

**ADAU1361BCPZ-R7**

Analog Devices Inc.
IC CODEC 24B PLL 32LFCSP

**ADAU1446YSTZ-3A**

Analog Devices Inc.
IC SIGMADSP 175MHZ 100LQFP

**ADAU1381BCPZ**

Analog Devices Inc.
IC AUDIO CODEC STEREO LN 32LFCSP

**ADAU1401WBSTZ**

ADI (Analog Devices, Inc.)

**ADAU1401AWBSTZ**

Analog Devices Inc.
IC AUDIO PROC 28/56BIT 48LQFP

**ADAU1421YSTZ**

ADI (Analog Devices, Inc.)

Shipment

Delivery Time

In-stock items can be shipped within 24 hours. Some parts will be arranged for delivery within 1-2 days from the date all items arrive at our warehouse. And Allelco ships order once a day at about 17:00, except Sunday. Once the goods are shipped, the estimated delivery time depends on the shipping methods and Delivery destination. The table below shows are the logistic time for some common countries.

Delivery Cost

> Use your express account for shipment if you have one.

> Use our account for the shipment. Refer to the table below for the approximate charges.

(Different time frame / countries / package size has different price.)

Delivery Method

> Global Common Shipment by DHL / UPS / FedEx / TNT / EMS / SF we support.

> Others more shipping ways, please get in touch with your customer manager.

Common Countries Logistic Time Reference		
Region	Country	Logistic Time(Day)
America	United States	5
	Brazil	7
Europe	Germany	5
	United Kingdom	4
	Italy	5
Oceania	Australia	6
	New Zealand	7
Asia	India	6
	Japan	7
Middle East	Israel	6

DHL & FedEx Shipment Charges Reference	
Shipment charges(KG)	Reference DHL(USD\$)
0.00kg-1.00kg	USD\$60.00
1.00kg-2.00kg	USD\$70.00
2.00kg-3.00kg	USD\$80.00

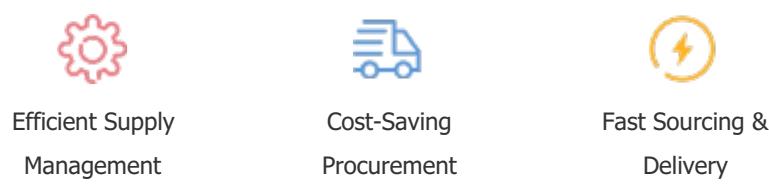
Note: The above table is for reference only. There may have some data bias for the uncontrollable factors.
Contact us if you have any questions.

Payment Support

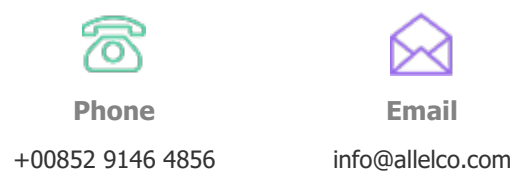
The payment method can be chosen from the methods shown below:
Wire Transfer (T/T, Bank Transfer), Western Union, Credit card, PayPal.



Your Faithful Supply Chain Partner -



Contact us if you have any questions.



Certifications & Memberships



[View More](#)



Contact us

Address: Flat/Rm C 13/F Harvard Commercial Building 105-111 Thomson Road, Wan Chai, Hong Kong

Phone: +00852 9146 4856

Fax: +00852 3010 8510

Email: info@allelco.com

Copyright © 2012-2023 AllelcoElec.com. All rights reserved.