



Image may be representation.  
See specifications for product details.



## AD823AARZ-RL

Manufacturer Part Number	<b>AD823AARZ-RL</b>
Manufacturer	<b>Analog Devices, Inc.</b>
Allelco Part Number	32D-AD823AARZ-RL
ECAD Model	PCB Symbol, Footprint & 3D Model
Parts Description	IC OPAMP JFET 2 CIRCUIT 8SOIC
Package	8-SOIC (0.154", 3.90mm Width)
Data sheet	AD823AARZ-RL.pdf
RoHs Status	<b>ROHS3 Compliant</b>

**Get a Quote**

AD823AARZ-RL - Analog Devices Inc..New Original in Stock. Download Linear Technology AD823AARZ-RL datasheet/specifications on AllelcoElec.com. Request a quote for AD823AARZ-RL, please send us email: [info@allelco.com](mailto:info@allelco.com)

### Specifications

AD823AARZ-RL Tech Specifications

AD823AARZ-RL - Analog Devices Inc. technical specifications, attributes, parameters

Product Attribute	Attribute Value	Product Attribute	Attribute Value
Manufacturer	Analog Devices, Inc.	Operating Temperature	-40°C ~ 85°C
Voltage - Supply Span (Min)	3 V	Number of Circuits	2
Voltage - Supply Span (Max)	36 V	Mounting Type	Surface Mount
Voltage - Input Offset	800 µV	Gain Bandwidth Product	10 MHz
Supplier Device Package	8-SOIC	Current - Supply	6.3mA (x2 Channels)
Slew Rate	35V/µs	Current - Output / Channel	17 mA
Series	-	Current - Input Bias	1.3 pA
Package / Case	8-SOIC (0.154", 3.90mm Width)	Base Product Number	AD823
Package	Tape & Reel (TR)	Amplifier Type	J-FET
Output Type	Rail-to-Rail	-3db Bandwidth	19 MHz

### Parts with Similar Specifications

The three parts on the right have similar specifications to Analog Devices Inc. AD823AARZ-RL

Product Attribute				
Part Number	AD823AARZ-RL	AD823ARZ-R7	AD823AARZ	AD823AN
Manufacturer	Analog Devices Inc.	Analog Devices Inc.	Analog Devices Inc.	Analog Devices Inc.
Amplifier Type	J-FET	J-FET	J-FET	J-FET
Mounting Type	Surface Mount	Surface Mount	Surface Mount	Through Hole
Base Product Number	AD823	AD823	AD823	AD823
Output Type	Rail-to-Rail	Rail-to-Rail	Rail-to-Rail	Rail-to-Rail
Current - Input Bias	1.3 pA	5 pA	1.3 pA	5 pA
-3db Bandwidth	19 MHz	16 MHz	19 MHz	16 MHz
Package / Case	8-SOIC (0.154", 3.90mm Width)	8-SOIC (0.154", 3.90mm Width)	8-SOIC (0.154", 3.90mm Width)	8-DIP (0.300", 7.62mm)
Package	Tape & Reel (TR)	Tape & Reel (TR)	Tube	Tube
Gain Bandwidth Product	10 MHz	-	10 MHz	-
Voltage - Input Offset	800 µV	700 µV	800 µV	700 µV
Supplier Device Package	8-SOIC	8-SOIC	8-SOIC	8-PDIP
Current - Supply	6.3mA (x2 Channels)	7mA	6.3mA (x2 Channels)	7mA (x2 Channels)
Slew Rate	35V/µs	25V/µs	35V/µs	25V/µs
Voltage - Supply Span (Max)	36 V	36 V	36 V	36 V
Number of Circuits	2	2	2	2
Series	-	-	-	-
Voltage - Supply Span (Min)	3 V	3 V	3 V	3 V
Current - Output / Channel	17 mA	17 mA	17 mA	17 mA
Operating Temperature	-40°C ~ 85°C	-40°C ~ 85°C	-40°C ~ 85°C	-40°C ~ 85°C

### Customers Also Interested in

#### Recommended Products



**AD823ARZ-R7**

Analog Devices Inc.  
IC OPAMP JFET 2 CIRCUIT 8SOIC



**AD823AARZ**

Analog Devices Inc.  
IC OPAMP JFET 2 CIRCUIT 8SOIC



**AD8233XCBZ-R7**

ADI (Analog Devices, Inc.)



**AD8240YRM**

Analog Devices Inc.  
IC LED DRIVER LINEAR PWM 8MSOP



**AD823AN**

Analog Devices Inc.  
IC OPAMP JFET R-R DUAL LN 8DIP



**AD823AARMZ**

Analog Devices Inc.  
IC OPAMP JFET 2 CIRCUIT 8MSOP

**AD8233ACBZ-R7**Analog Devices Inc.  
IC ECG FRONT END 20WLCSP**AD8237ARMZ-R7**Analog Devices Inc.  
IC INST AMP 1 CIRCUIT 8MSOP**AD823ANZ**Analog Devices Inc.  
IC OPAMP JFET 2 CIRCUIT 8DIP**AD8236ARMZ-R7**Analog Devices Inc.  
IC INST AMP 1 CIRCUIT 8MSOP**AD823AR**Analog Devices Inc.  
IC OPAMP JFET 2 CIRCUIT 8SOIC**AD823AARZ-R7**Analog Devices Inc.  
IC OPAMP JFET 2 CIRCUIT 8SOIC**AD823ARZ-REEL7**

ADI (Analog Devices, Inc.)

**AD823AR.**

ADI (Analog Devices, Inc.)

**AD823ARZ**Analog Devices Inc.  
IC OPAMP JFET 2 CIRCUIT 8SOIC**AD8236ARMZ**Analog Devices Inc.  
IC INST AMP 1 CIRCUIT 8MSOP**AD823ARZ-RL**Analog Devices Inc.  
IC OPAMP JFET 2 CIRCUIT 8SOIC

## Shipment

### Delivery Time

In-stock items can be shipped within 24 hours. Some parts will be arranged for delivery within 1-2 days from the date all items arrive at our warehouse. And Allelco ships order once a day at about 17:00, except Sunday. Once the goods are shipped, the estimated delivery time depends on the shipping methods and Delivery destination. The table below shows are the logistic time for some common countries.

### Delivery Cost

> Use your express account for shipment if you have one.

> Use our account for the shipment. Refer to the table below for the approximate charges.

(Different time frame / countries / package size has different price.)

### Delivery Method

> Global Common Shipment by DHL / UPS / FedEx / TNT / EMS / SF we support.

> Others more shipping ways, please get in touch with your customer manager.

Common Countries Logistic Time Reference		
Region	Country	Logistic Time(Day)
America	United States	5
	Brazil	7
Europe	Germany	5
	United Kingdom	4
	Italy	5
Oceania	Australia	6
	New Zealand	7
Asia	India	6
	Japan	7
Middle East	Israel	6

DHL & FedEx Shipment Charges Reference	
Shipment charges(KG)	Reference DHL(USD\$)
0.00kg-1.00kg	USD\$60.00
1.00kg-2.00kg	USD\$70.00
2.00kg-3.00kg	USD\$80.00

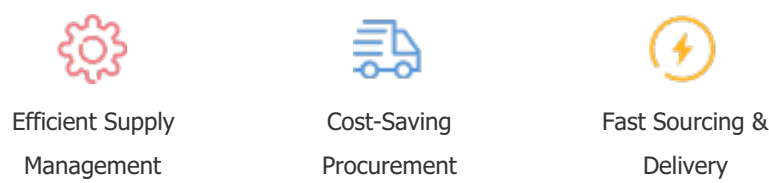
Note: The above table is for reference only. There may have some data bias for the uncontrollable factors.  
Contact us if you have any questions.

### Payment Support

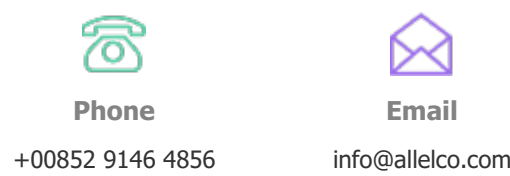
The payment method can be chosen from the methods shown below:  
Wire Transfer (T/T, Bank Transfer), Western Union, Credit card, PayPal.



### Your Faithful Supply Chain Partner -



Contact us if you have any questions.



### Certifications & Memberships



[View More](#)



### Contact us

Address: Flat/Rm C 13/F Harvard Commercial Building 105-111 Thomson Road, Wan Chai, Hong Kong

Phone: +00852 9146 4856

Fax: +00852 3010 8510

Email: info@allelco.com

Copyright © 2012-2023 AllelcoElec.com. All rights reserved.