



Image may be representation.  
See specifications for product details.



## ADP1111ARZ-3.3

Manufacturer Part Number	<b>ADP1111ARZ-3.3</b>
Manufacturer	<b>Analog Devices, Inc.</b>
Allelco Part Number	32D-ADP1111ARZ-3.3
ECAD Model	PCB Symbol, Footprint & 3D Model
Parts Description	IC REG BUCK BST 3.3V 400MA 8SOIC
Package	8-SOIC (0.154", 3.90mm Width)
Data sheet	<b>Cylindrical Battery Holders.pdf</b>
RoHs Status	<b>ROHS3 Compliant</b>

**Get a Quote**

ADP1111ARZ-3.3 - Analog Devices Inc..New Original in Stock. Download Linear Technology ADP1111ARZ-3.3 datasheet/specifications on AllelcoElec.com.  
Request a quote for ADP1111ARZ-3.3, please send us email: [info@allelco.com](mailto:info@allelco.com)

### Specifications

ADP1111ARZ-3.3 Tech Specifications  
ADP1111ARZ-3.3 - Analog Devices Inc. technical specifications, attributes, parameters

Product Attribute	Attribute Value	Product Attribute	Attribute Value
Manufacturer	Analog Devices, Inc.	Package	Tube
Voltage - Output (Min/Fixed)	3.3V	Output Type	Fixed
Voltage - Output (Max)	-	Output Configuration	Positive or Negative
Voltage - Input (Min)	2V	Operating Temperature	0°C ~ 70°C (TA)
Voltage - Input (Max)	30V	Number of Outputs	1
Topology	Buck, Boost	Mounting Type	Surface Mount
Synchronous Rectifier	No	Function	Step-Up, Step-Down
Supplier Device Package	8-SOIC	Frequency - Switching	72kHz
Series	-	Current - Output	400mA (Switch)
Package / Case	8-SOIC (0.154", 3.90mm Width)	Base Product Number	ADP1111

### Parts with Similar Specifications

The three parts on the right have similar specifications to Analog Devices Inc. ADP1111ARZ-3.3

Product Attribute				
Part Number	ADP1111ARZ-3.3	ADP1111ARZ-5	ADP1109AR	ADP1111AN-12
Manufacturer	Analog Devices Inc.	Analog Devices Inc.	Analog Devices Inc.	Analog Devices Inc.
Voltage - Output (Max)	-	-	12V	-
Voltage - Input (Max)	30V	30V	9V	-
Voltage - Output (Min/Fixed)	3.3V	5V	1.25V	-
Voltage - Input (Min)	2V	2V	2V	-
Package	Tube	Tube	Bulk	Tube
Synchronous Rectifier	No	No	No	-
Operating Temperature	0°C ~ 70°C (TA)	0°C ~ 70°C (TA)	0°C ~ 70°C	-
Output Configuration	Positive or Negative	Positive or Negative	Positive	-
Function	Step-Up, Step-Down	Step-Up, Step-Down	Step-Up	-
Package / Case	8-SOIC (0.154", 3.90mm Width)	8-SOIC (0.154", 3.90mm Width)	8-SOIC (0.154", 3.90mm Width)	8-DIP (0.300", 7.62mm)
Number of Outputs	1	1	1	-
Base Product Number	ADP1111	ADP1111	-	ADP1111
Current - Output	400mA (Switch)	400mA (Switch)	1.2A (Switch)	-
Topology	Buck, Boost	Buck, Boost	Boost	-
Frequency - Switching	72kHz	72kHz	120kHz	-
Mounting Type	Surface Mount	Surface Mount	Surface Mount	Through Hole
Series	-	-	-	*
Output Type	Fixed	Fixed	Adjustable	-
Supplier Device Package	8-SOIC	8-SOIC	8-SOIC	8-PDIP

### ADP1111ARZ-3.3 Datasheet PDF

Download ADP1111ARZ-3.3 pdf datasheets and Analog Devices Inc. documentation for ADP1111ARZ-3.3 - Analog Devices Inc..

#### Datasheets

[Cylindrical Battery Holders.pdf](#)

### Customers Also Interested in

#### Recommended Products

**ADP111A5**

ADI (Analog Devices, Inc.)

**ADP1111AR**

ADI (Analog Devices, Inc.)

**ADP1110A**

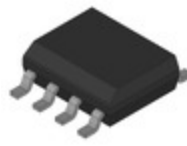
ADI (Analog Devices, Inc.)

**ADP1148-003R**

ADI (Analog Devices, Inc.)

**ADP1111ARZ-5**Analog Devices Inc.  
IC REG BUCK BST 5V 400MA 8SOIC**ADP1148-003RR**

ADI (Analog Devices, Inc.)

**ADP1148**

ADI (Analog Devices, Inc.)

**ADP1109AR**Analog Devices Inc.  
UPOWER ADJ. DC-DC CONVERTER**ADP1110A12**

ADI (Analog Devices, Inc.)

**ADP1111AN-12**Analog Devices Inc.  
IC MULTI CONFIG 12V .2A 8DIP**ADP1111ARZ**Analog Devices Inc.  
IC REG BUCK BST ADJ 400MA 8SOIC**ADP1111A12**

ADI (Analog Devices, Inc.)

**ADP1109AR-5-REEL**Analog Devices Inc.  
UPOWER, FIXED 5V DC-DC  
CONVERTER**ADP1110A5**

ADI (Analog Devices, Inc.)

**ADP1148AR**Analog Devices Inc.  
IC REG LIN STEP DOWN SWITCHING**ADP1147AN-3.3**Analog Devices Inc.  
STEP-DOWN SWITCHING REG**ADP112**

Panasonic

**ADP1111A**

ADI (Analog Devices, Inc.)

## Shipment

### Delivery Time

In-stock items can be shipped within 24 hours. Some parts will be arranged for delivery within 1-2 days from the date all items arrive at our warehouse. And Allelco ships order once a day at about 17:00, except Sunday. Once the goods are shipped, the estimated delivery time depends on the shipping methods and Delivery destination. The table below shows are the logistic time for some common countries.

### Delivery Cost

> Use your express account for shipment if you have one.

> Use our account for the shipment. Refer to the table below for the approximate charges.

(Different time frame / countries / package size has different price.)

### Delivery Method

> Global Common Shipment by DHL / UPS / FedEx / TNT / EMS / SF we support.

> Others more shipping ways, please get in touch with your customer manager.

Common Countries Logistic Time Reference		
Region	Country	Logistic Time(Day)
America	United States	5
	Brazil	7
Europe	Germany	5
	United Kingdom	4
	Italy	5
Oceania	Australia	6
	New Zealand	7
Asia	India	6
	Japan	7
Middle East	Israel	6

DHL & FedEx Shipment Charges Reference	
Shipment charges(KG)	Reference DHL(USD\$)
0.00kg-1.00kg	USD\$60.00
1.00kg-2.00kg	USD\$70.00
2.00kg-3.00kg	USD\$80.00

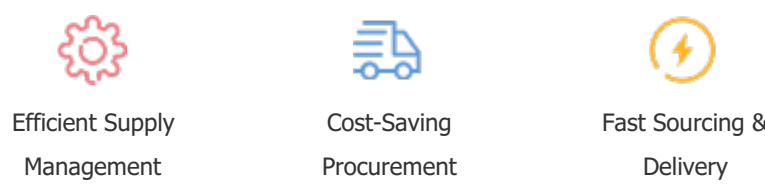
Note: The above table is for reference only. There may have some data bias for the uncontrollable factors.  
Contact us if you have any questions.

## Payment Support

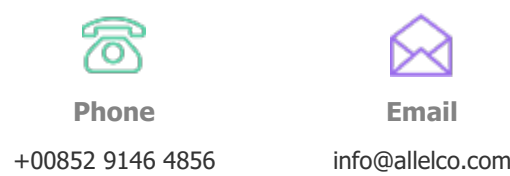
The payment method can be chosen from the methods shown below:  
Wire Transfer (T/T, Bank Transfer), Western Union, Credit card,  
PayPal.



## Your Faithful Supply Chain Partner -



Contact us if you have any questions.



## Certifications & Memberships



[View More](#)