



Image may be representation.  
See specifications for product details.



## STW150NF55

Manufacturer Part Number	<b>STW150NF55</b>
Manufacturer	<b>STMicroelectronics</b>
Allelco Part Number	32D-STW150NF55
ECAD Model	Request Free CAD Models
Parts Description	MOSFET N-CH 55V 120A TO247-3
Package	TO-247-3
Data sheet	<b>STx150NF55.pdf</b>
RoHs Status	<b>ROHS3 Compliant</b>

**Get a Quote**

STW150NF55 - STMicroelectronics.New Original in Stock. Download Linear Technology STW150NF55 datasheet/specifications on AllelcoElec.com.  
Request a quote for STW150NF55, please send us email: [info@allelco.com](mailto:info@allelco.com)

### Specifications

STW150NF55 Tech Specifications

STW150NF55 - STMicroelectronics technical specifications, attributes, parameters

Product Attribute	Attribute Value	Product Attribute	Attribute Value
Manufacturer	STMicroelectronics	Operating Temperature	-55°C ~ 175°C (TJ)
Vgs(th) (Max) @ Id	4V @ 250µA	Mounting Type	Through Hole
Vgs (Max)	±20V	Input Capacitance (Ciss) (Max) @ Vds	4400 pF @ 25 V
Technology	MOSFET (Metal Oxide)	Gate Charge (Qg) (Max) @ Vgs	190 nC @ 10 V
Supplier Device Package	TO-247-3	FET Type	N-Channel
Series	STripFET™ II	FET Feature	-
Rds On (Max) @ Id, Vgs	6mOhm @ 60A, 10V	Drive Voltage (Max Rds On, Min Rds On)	10V
Power Dissipation (Max)	300W (Tc)	Drain to Source Voltage (Vdss)	55 V
Package / Case	TO-247-3	Current - Continuous Drain (Id) @ 25°C	120A (Tc)
Package	Tube	Base Product Number	STW150

### Parts with Similar Specifications

The three parts on the right have similar specifications to STMicroelectronics STW150NF55

Product Attribute				
Part Number	STW150NF55	STW13NK100Z	STW13NB60	STW15N95K5
Manufacturer	STMicroelectronics	STMicroelectronics	STMicroelectronics	STMicroelectronics
Package	Tube	Tube	Tube	Tube
Current - Continuous Drain (Id) @ 25°C	120A (Tc)	13A (Tc)	13A (Tc)	12A (Tc)
Base Product Number	STW150	STW13	STW13N	STW15
Input Capacitance (Ciss) (Max) @ Vds	4400 pF @ 25 V	6000 pF @ 25 V	2600 pF @ 25 V	900 pF @ 100 V
Operating Temperature	-55°C ~ 175°C (TJ)	-55°C ~ 150°C (TJ)	150°C (TJ)	-55°C ~ 150°C (TJ)
Supplier Device Package	TO-247-3	TO-247-3	TO-247-3	TO-247-3
Vgs (Max)	±20V	±30V	±30V	±30V
Gate Charge (Qg) (Max) @ Vgs	190 nC @ 10 V	266 nC @ 10 V	82 nC @ 10 V	40 nC @ 10 V
Drive Voltage (Max Rds On, Min Rds On)	10V	10V	10V	10V
Power Dissipation (Max)	300W (Tc)	350W (Tc)	190W (Tc)	170W (Tc)
Rds On (Max) @ Id, Vgs	6mOhm @ 60A, 10V	700mOhm @ 6.5A, 10V	540mOhm @ 6.5A, 10V	500mOhm @ 6A, 10V
Series	STripFET™ II	SuperMESH™	PowerMESH™	SuperMESH5™
FET Feature	-	-	-	-
Package / Case	TO-247-3	TO-247-3	TO-247-3	TO-247-3
Drain to Source Voltage (Vdss)	55 V	1000 V	600 V	950 V
FET Type	N-Channel	N-Channel	N-Channel	N-Channel
Technology	MOSFET (Metal Oxide)	MOSFET (Metal Oxide)	MOSFET (Metal Oxide)	MOSFET (Metal Oxide)
Vgs(th) (Max) @ Id	4V @ 250µA	4.5V @ 150µA	5V @ 250µA	5V @ 100µA
Mounting Type	Through Hole	Through Hole	Through Hole	Through Hole

### STW150NF55 Datasheet PDF

Download STW150NF55 pdf datasheets and STMicroelectronics documentation for STW150NF55 - STMicroelectronics.

#### Datasheets

STx150NF55.pdf

### Customers Also Interested in

#### Recommended Products



**STW15NK90Z MOS**  
STMicroelectronics

**STW13NK100Z**  
STMicroelectronics  
MOSFET N-CH 1000V 13A TO247-3

**STW13NB60**  
STMicroelectronics  
MOSFET N-CH 600V 13A TO247-3

**STW15N95K5**  
STMicroelectronics  
MOSFET N-CH 950V 12A TO247

**STW15NK90Z**  
STMicroelectronics  
MOSFET N-CH 900V 15A TO247-3

**STW14NK60Z**  
STMicroelectronics  
MOSFET N-CH 600V 13.5A TO247-3



**STW13NK80Z**  
STMicroelectronics  
MOSFET N-CH 800V 12A TO247-3

**STW13NK100Z MOS**  
STMicroelectronics

**STW15N80K5**  
STMicroelectronics  
MOSFET N-CH 800V 14A TO247

**STW13NM50N**  
STMicroelectronics  
MOSFET N-CH 500V 12A TO247-3

**STW15NK50Z**  
STMicroelectronics  
MOSFET N-CH 500V 14A TO247-3

**STW14NK50Z**  
STMicroelectronics  
MOSFET N-CH 500V 14A TO247-3



**STW14NC50**  
STMicroelectronics

**STW15NM60N**  
STMicroelectronics  
MOSFET N-CH 600V 14A TO247-3

**STW13NK60Z**  
STMicroelectronics  
MOSFET N-CH 600V 13A TO247-3

**STW15N60C3**  
Cypress Semiconductor  
(Infineon Technologies)

**STW15NA50**  
STMicroelectronics

**STW15NB50**  
STMicroelectronics  
MOSFET N-CH 500V 14.6A TO247-3

## Shipment

### Delivery Time

In-stock items can be shipped within 24 hours. Some parts will be arranged for delivery within 1-2 days from the date all items arrive at our warehouse. And Allelco ships order once a day at about 17:00, except Sunday. Once the goods are shipped, the estimated delivery time depends on the shipping methods and Delivery destination. The table below shows are the logistic time for some common countries.

### Delivery Cost

- > Use your express account for shipment if you have one.
- > Use our account for the shipment. Refer to the table below for the approximate charges.  
(Different time frame / countries / package size has different price.)

### Delivery Method

- > Global Common Shipment by DHL / UPS / FedEx / TNT / EMS / SF we support.
- > Others more shipping ways, please get in touch with your customer manager.

Common Countries Logistic Time Reference		
Region	Country	Logistic Time(Day)
America	United States	5
	Brazil	7
Europe	Germany	5
	United Kingdom	4
	Italy	5
Oceania	Australia	6
	New Zealand	7
Asia	India	6
	Japan	7
Middle East	Israel	6

DHL & FedEx Shipment Charges Reference	
Shipment charges(KG)	Reference DHL(USD\$)
0.00kg-1.00kg	USD\$60.00
1.00kg-2.00kg	USD\$70.00
2.00kg-3.00kg	USD\$80.00

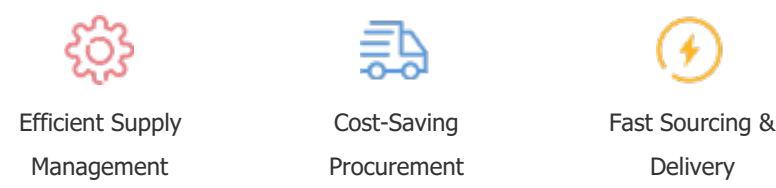
Note: The above table is for reference only. There may have some data bias for the uncontrollable factors.  
Contact us if you have any questions.

## Payment Support

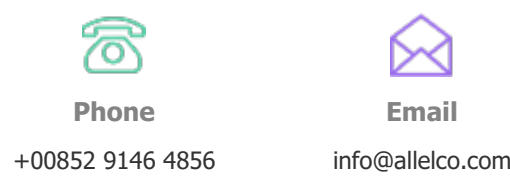
The payment method can be chosen from the methods shown below:  
Wire Transfer (T/T, Bank Transfer), Western Union, Credit card, PayPal.



## Your Faithful Supply Chain Partner -



Contact us if you have any questions.



## Certifications & Memberships



[View More](#)



## Contact us

Address: Flat/Rm C 13/F Harvard Commercial Building 105-111 Thomson Road, Wan Chai, Hong Kong  
Phone: +00852 9146 4856  
Fax: +00852 3010 8510  
Email: info@Allelco.com