



Image may be representation.  
See specifications for product details.



## VIPER53SP

Manufacturer Part Number	<b>VIPER53SP</b>
Manufacturer	<b>STMicroelectronics</b>
Allelco Part Number	32D-VIPER53SP
ECAD Model	Request Free CAD Models
Parts Description	IC OFFLINE SW FLBACK 10POWERSO
Package	PowerSO-10 Exposed Bottom Pad
Data sheet	<b>Cylindrical Battery Holders.pdf</b>
RoHs Status	ROHS3 Compliant

**Get a Quote**

VIPER53SP - STMicroelectronics.New Original in Stock. Download Linear Technology VIPER53SP datasheet/specifications on AllelcoElec.com.  
Request a quote for VIPER53SP, please send us email: [info@allelco.com](mailto:info@allelco.com)

## Specifications

VIPER53SP Tech Specifications

VIPER53SP - STMicroelectronics technical specifications, attributes, parameters

Product Attribute	Attribute Value	Product Attribute	Attribute Value
Manufacturer	STMicroelectronics	Output Isolation	Isolated
Voltage - Supply (Vcc/Vdd)	8.4V ~ 19V	Operating Temperature	-40°C ~ 150°C (TC)
Voltage - Start Up	11.5 V	Mounting Type	Surface Mount
Voltage - Breakdown	620V	Internal Switch(s)	Yes
Topology	Flyback	Frequency - Switching	Up to 300kHz
Supplier Device Package	10-PowerSO	Fault Protection	Current Limiting, Over Load, Over Temperature, Short Circuit
Series	VIPER™	Duty Cycle	-
Power (Watts)	65 W	Control Features	EN, Frequency Control, Soft Start
Package / Case	PowerSO-10 Exposed Bottom Pad	Base Product Number	VIPER53
Package	Tube		

## Parts with Similar Specifications

The three parts on the right have similar specifications to STMicroelectronics VIPER53SP

Product Attribute				
Part Number	VIPER53SP	VIPER53SP-E	VIPERA16HDTR	VIPER53DIP-E
Manufacturer	STMicroelectronics	STMicroelectronics	STMicroelectronics	STMicroelectronics
Voltage - Breakdown	620V	620V	16-SO	620V
Frequency - Switching	Up to 300kHz	Up to 300kHz	-	Up to 300kHz
Operating Temperature	-40°C ~ 150°C (TC)	-40°C ~ 150°C (TC)	-40°C ~ 150°C (TJ)	-40°C ~ 150°C (TC)
Internal Switch(s)	Yes	Yes	-	Yes
Duty Cycle	-	-	13V	-
Package	Tube	Tube	-	Tube
Output Isolation	Isolated	Isolated	-	Isolated
Mounting Type	Surface Mount	Surface Mount	Surface Mount	Through Hole
Topology	Flyback	Flyback	Either	Flyback
Supplier Device Package	10-PowerSO	10-PowerSO	-	8-DIP
Series	VIPER™	VIPER™	VIPer™ plus	VIPER™
Fault Protection	Current Limiting, Over Load, Over Temperature, Short Circuit	Current Limiting, Over Load, Over Temperature, Short Circuit	80%	Current Limiting, Over Load, Over Temperature, Short Circuit
Package / Case	PowerSO-10 Exposed Bottom Pad	PowerSO-10 Exposed Bottom Pad	-	8-DIP (0.300", 7.62mm)
Base Product Number	VIPER53	VIPER53	-	VIPER53
Voltage - Start Up	11.5 V	11.5 V	Buck, Buck-Boost, Flyback	11.5 V
Control Features	EN, Frequency Control, Soft Start	EN, Frequency Control, Soft Start	Current Limiting, Over Temperature	EN, Frequency Control, Soft Start
Voltage - Supply (Vcc/Vdd)	8.4V ~ 19V	8.4V ~ 19V	-	8.4V ~ 19V
Power (Watts)	65 W	65 W	-	50 W

## VIPER53SP Datasheet PDF

Download VIPER53SP pdf datasheets and STMicroelectronics documentation for VIPER53SP - STMicroelectronics.

### Datasheets

Cylindrical Battery Holders.pdf

## Customers Also Interested in

### Recommended Products



### VIPER53SP-E

STMicroelectronics  
IC OFFLINE SW FLBACK 10POWERSO

### VIPERA16H

STMicroelectronics

### VIPERA16HDTR

STMicroelectronics  
IC OFFLINE CONV PWM OTP

### VIPER53DIP-E

STMicroelectronics  
IC OFFLINE SWITCH FLYBACK 8DIP

### VIPer53

STMicroelectronics

### VIPER50ASP13TR

STMicroelectronics



### VIPER73

STMicroelectronics

### VIPLM6361M

NS

### VIPER50SP

STMicroelectronics  
IC OFFLIN CONV FLBACK  
5PENTAWATT

### VIPer50R

STMicroelectronics

### VIPER53ESPTR-E

STMicroelectronics  
IC OFFLINE SW FLBACK 10POWERSO

### VIPLM6261M

NS



### VIPER50B

STMicroelectronics

### VIPER53SPTR-E

STMicroelectronics  
IC OFFLINE SW FLBACK 10POWERSO

### VIPLM6264M

NS

### VIPER50BSP

STMicroelectronics

### VIPER50SSP

STMicroelectronics

### VIPER50ASP-E

STMicroelectronics  
IC OFFLINE SW FLBACK 10POWERSO

## Shipment

### Delivery Time

In-stock items can be shipped within 24 hours. Some parts will be arranged for delivery within 1-2 days from the date all items arrive at our warehouse. And Allelco ships order once a day at about 17:00, except Sunday. Once the goods are shipped, the estimated delivery time depends on the shipping methods and Delivery destination. The table below shows are the logistic time for some common countries.

### Delivery Cost

> Use your express account for shipment if you have one.

> Use our account for the shipment. Refer to the table below for the approximate charges.

(Different time frame / countries / package size has different price.)

### Delivery Method

> Global Common Shipment by DHL / UPS / FedEx / TNT / EMS / SF we support.

> Others more shipping ways, please get in touch with your customer manager.

Common Countries Logistic Time Reference		
Region	Country	Logistic Time(Day)
America	United States	5
	Brazil	7
Europe	Germany	5
	United Kingdom	4
	Italy	5
Oceania	Australia	6
	New Zealand	7
Asia	India	6
	Japan	7
Middle East	Israel	6

DHL & FedEx Shipment Charges Reference	
Shipment charges(KG)	Reference DHL(USD\$)
0.00kg-1.00kg	USD\$60.00
1.00kg-2.00kg	USD\$70.00
2.00kg-3.00kg	USD\$80.00

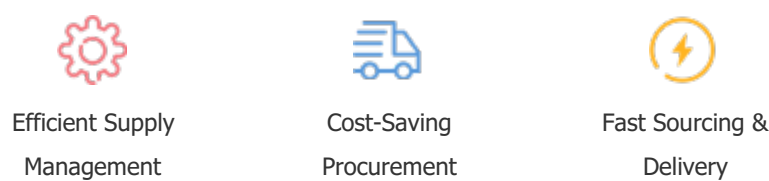
Note: The above table is for reference only. There may have some data bias for the uncontrollable factors.  
Contact us if you have any questions.

## Payment Support

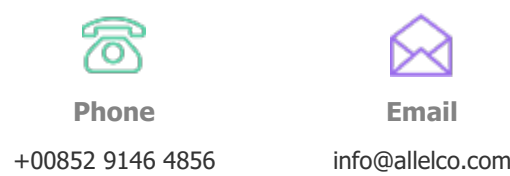
The payment method can be chosen from the methods shown below:  
Wire Transfer (T/T, Bank Transfer), Western Union, Credit card, PayPal.



## Your Faithful Supply Chain Partner -



Contact us if you have any questions.



+00852 9146 4856  
info@allelco.com

## Certifications & Memberships



View More



WWW.ALLELCOELEC.COM

### Contact us

Address: Flat/Rm C 13/F Harvard Commercial Building 105-111 Thomson Road, Wan Chai, Hong Kong

Phone: +00852 9146 4856

Fax: +00852 3010 8510

Email: info@Allelco.com

Copyright © 2012-2023 AllelcoElec.com. All rights reserved.