

Image may be representation.
See specifications for product details.



MAX3226EAE+T

Manufacturer Part Number	MAX3226EAE+T
Manufacturer	Maxim Integrated
Allelco Part Number	32D-MAX3226EAE+T
ECAD Model	Request Free CAD Models
Parts Description	IC TRANSCEIVER FULL 1/1 16SSOP
Package	16-SSOP (0.209", 5.30mm Width)
Data sheet	MAX3224-27,44,45.pdf
RoHs Status	ROHS3 Compliant

Get a Quote

MAX3226EAE+T - Analog Devices Inc./Maxim Integrated.New Original in Stock. Download Linear Technology MAX3226EAE+T datasheet/specifications on AllelcoElec.com. Request a quote for MAX3226EAE+T, please send us email: info@allelco.com

Specifications

MAX3226EAE+T Tech Specifications
MAX3226EAE+T - Analog Devices Inc./Maxim Integrated technical specifications, attributes, parameters

Product Attribute	Attribute Value	Product Attribute	Attribute Value
Manufacturer	Maxim Integrated	Package	Tape & Reel (TR)
Voltage - Supply	3V ~ 5.5V	Operating Temperature	-40°C ~ 85°C
Type	Transceiver	Number of Drivers/Receivers	1/1
Supplier Device Package	16-SSOP	Mounting Type	Surface Mount
Series	-	Duplex	Full
Receiver Hysteresis	500 mV	Data Rate	250kbps
Protocol	RS232	Base Product Number	MAX3226
Package / Case	16-SSOP (0.209", 5.30mm Width)		

Parts with Similar Specifications

The three parts on the right have similar specifications to Analog Devices Inc./Maxim Integrated MAX3226EAE+T

Product Attribute				
Part Number	MAX3226EAE+T	MAX3225EEUP+T	MAX3225EUP	MAX3225EEUP
Manufacturer	Analog Devices Inc./Maxim Integrated	Analog Devices Inc./Maxim Integrated	Analog Devices Inc./Maxim Integrated	Analog Devices Inc./Maxim Integrated
Number of Drivers/Receivers	1/1	2/2	2/2	2/2
Voltage - Supply	3V ~ 5.5V	3V ~ 5.5V	3V ~ 5.5V	3V ~ 5.5V
Data Rate	250kbps	1Mbps	1Mbps	1Mbps
Receiver Hysteresis	500 mV	500 mV	500 mV	500 mV
Duplex	Full	Full	Full	Full
Package / Case	16-SSOP (0.209", 5.30mm Width)	20-TSSOP (0.173", 4.40mm Width)	20-TSSOP (0.173", 4.40mm Width)	20-TSSOP (0.173", 4.40mm Width)
Protocol	RS232	RS232	RS232	RS232
Series	-	-	-	-
Package	Tape & Reel (TR)	Tape & Reel (TR)	Bulk	Tube
Type	Transceiver	Transceiver	Transceiver	Transceiver
Operating Temperature	-40°C ~ 85°C	-40°C ~ 85°C	-40°C ~ 85°C (TA)	-40°C ~ 85°C
Base Product Number	MAX3226	MAX3225	-	MAX3225
Mounting Type	Surface Mount	Surface Mount	Surface Mount	Surface Mount
Supplier Device Package	16-SSOP	20-TSSOP	20-TSSOP	20-TSSOP

MAX3226EAE+T Datasheet PDF

Download MAX3226EAE+T pdf datasheets and Analog Devices Inc./Maxim Integrated documentation for MAX3226EAE+T - Analog Devices Inc./Maxim Integrated.

Datasheets

[MAX3224-27,44,45.pdf](#)

Environmental Information

[Maxim Integrated REACH.pdf](#)

[Maxim Integrated RoHS Cert.pdf](#)

[Red Phosphorous Certificate.pdf](#)

Part Numbering Guide

[Part Numbering System.pdf](#)

Application Notes

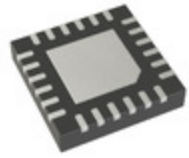
[Determining Clock Accuracy Requirements for UART C.pdf](#)

[Oops...Practical ESD Protection vs. Foolhardy Plac.pdf](#)

[ESD Protection for I/O Ports.pdf](#)

Customers Also Interested in

Recommended Products

**MAX3225EUP+T**Analog Devices Inc./Maxim Integrated
IC TRANSCEIVER FULL 2/2 20TSSOP**MAX3225EUP**Analog Devices Inc./Maxim Integrated
RS-232 TRANSCEIVERS**MAX3225EUP**Analog Devices Inc./Maxim Integrated
IC TRANSCEIVER FULL 2/2 20TSSOP**MAX3226EAE**Analog Devices Inc./Maxim Integrated
RS-232 TRANSCEIVERS**MAX3226CAE+T**Analog Devices Inc./Maxim Integrated
IC TRANSCEIVER FULL 1/1 16SSOP**MAX3227CAE+T**Analog Devices Inc./Maxim Integrated
IC TRANSCEIVER FULL 1/1 16SSOP**MAX3225EETP+T**Analog Devices Inc./Maxim Integrated
IC TRANSCEIVER FULL 2/2 20TQFN**MAX3227CAE+**Analog Devices Inc./Maxim Integrated
IC TRANSCEIVER FULL 1/1 16SSOP**MAX3225EUP+**Analog Devices Inc./Maxim Integrated
IC TRANSCEIVER FULL 2/2 20TSSOP**MAX3226EEAE**Analog Devices Inc./Maxim Integrated
IC TRANSCEIVER FULL 1/1 16SSOP**MAX3226CAE**Analog Devices Inc./Maxim Integrated
IC TRANSCEIVER FULL 1/1 16SSOP**MAX3226CAE**Analog Devices Inc./Maxim Integrated
RS-232 TRANSCEIVERS**MAX3227EAE**Analog Devices Inc./Maxim Integrated
RS-232 TRANSCEIVERS**MAX3226EAE+**Analog Devices Inc./Maxim Integrated
IC TRANSCEIVER FULL 1/1 16SSOP**MAX3226EEAE+T**Analog Devices Inc./Maxim Integrated
IC TRANSCEIVER FULL 1/1 16SSOP**MAX3226CAE+T**Analog Devices Inc./Maxim Integrated
IC TRANSCEIVER FULL 1/1 16SSOP**MAX3227CAE**Analog Devices Inc./Maxim Integrated
RS-232 TRANSCEIVERS**MAX3227EAAE+T**Analog Devices Inc./Maxim Integrated
IC TRANSCEIVER FULL 1/1 16SSOP

Shipment

Delivery Time

In-stock items can be shipped within 24 hours. Some parts will be arranged for delivery within 1-2 days from the date all items arrive at our warehouse. And Allelco ships order once a day at about 17:00, except Sunday. Once the goods are shipped, the estimated delivery time depends on the shipping methods and Delivery destination. The table below shows are the logistic time for some common countries.

Delivery Cost

> Use your express account for shipment if you have one.

> Use our account for the shipment. Refer to the table below for the approximate charges.

(Different time frame / countries / package size has different price.)

Delivery Method

> Global Common Shipment by DHL / UPS / FedEx / TNT / EMS / SF we support.

> Others more shipping ways, please get in touch with your customer manager.

Common Countries Logistic Time Reference		
Region	Country	Logistic Time(Day)
America	United States	5
	Brazil	7
Europe	Germany	5
	United Kingdom	4
	Italy	5
Oceania	Australia	6
	New Zealand	7
Asia	India	6
	Japan	7
Middle East	Israel	6

DHL & FedEx Shipment Charges Reference	
Shipment charges(KG)	Reference DHL(USD\$)
0.00kg-1.00kg	USD\$60.00
1.00kg-2.00kg	USD\$70.00
2.00kg-3.00kg	USD\$80.00

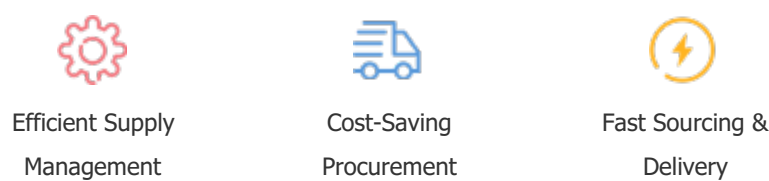
Note: The above table is for reference only. There may have some data bias for the uncontrollable factors.
Contact us if you have any questions.

Payment Support

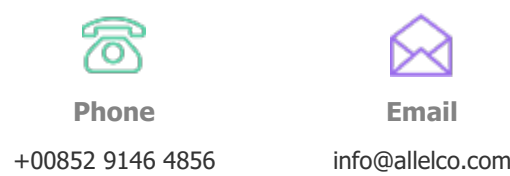
The payment method can be chosen from the methods shown below:
Wire Transfer (T/T, Bank Transfer), Western Union, Credit card, PayPal.



Your Faithful Supply Chain Partner -



Contact us if you have any questions.



Certifications & Memberships



[View More](#)