



Image may be representation.
See specifications for product details.



MAX20050ATC/V+

Manufacturer Part Number	MAX20050ATC/V+
Manufacturer	Maxim Integrated
Allelco Part Number	32D-MAX20050ATC/V+
ECAD Model	Request Free CAD Models
Parts Description	IC LED DRVR RGLTR PWM 2A 12TDFN
Package	12-WFDFN Exposed Pad
Data sheet	MAX20050-53.pdf
RoHs Status	ROHS3 Compliant

Get a Quote

MAX20050ATC/V+ - Analog Devices Inc./Maxim Integrated.New Original in Stock. Download Linear Technology MAX20050ATC/V+ datasheet/specifications on AllelcoElec.com.
Request a quote for MAX20050ATC/V+, please send us email: info@allelco.com

Specifications

MAX20050ATC/V+ Tech Specifications
MAX20050ATC/V+ - Analog Devices Inc./Maxim Integrated technical specifications, attributes, parameters

Product Attribute	Attribute Value	Product Attribute	Attribute Value
Manufacturer	Maxim Integrated	Operating Temperature	-40°C ~ 125°C
Voltage - Supply (Min)	4.5V	Number of Outputs	1
Voltage - Supply (Max)	65V	Mounting Type	Surface Mount
Voltage - Output	4.875V ~ 5.125V	Internal Switch(s)	Yes
Type	DC DC Regulator	Frequency	400kHz
Topology	Step-Down (Buck)	Dimming	Analog, PWM
Supplier Device Package	12-TDFN (3x3)	Current - Output / Channel	2A
Series	-	Base Product Number	MAX20050
Package / Case	12-WFDFN Exposed Pad	Applications	Commercial & Industrial Lighting
Package	Strip		

Parts with Similar Specifications

The three parts on the right have similar specifications to Analog Devices Inc./Maxim Integrated MAX20050ATC/V+

Product Attribute				
Part Number	MAX20050ATC/V+	MAX20050ATC+T	MAX20053AUD/V+T	MAX20051AUD/V+
Manufacturer	Analog Devices Inc./Maxim Integrated	Analog Devices Inc./Maxim Integrated	Analog Devices Inc./Maxim Integrated	Analog Devices Inc./Maxim Integrated
Internal Switch(s)	Yes	Yes	Yes	Yes
Voltage - Supply (Min)	4.5V	4.5V	4.5V	4.5V
Number of Outputs	1	1	1	1
Type	DC DC Regulator	DC DC Regulator	DC DC Regulator	DC DC Regulator
Series	-	-	-	-
Dimming	Analog, PWM	Analog, PWM	Analog, PWM	Analog, PWM
Operating Temperature	-40°C ~ 125°C	-40°C ~ 125°C	-40°C ~ 125°C	-40°C ~ 125°C
Base Product Number	MAX20050	MAX20050	MAX20053	MAX20051
Current - Output / Channel	2A	2A	2A	2A
Mounting Type	Surface Mount	Surface Mount	Surface Mount	Surface Mount
Package	Strip	Tape & Reel (TR)	Tape & Reel (TR)	Tube
Topology	Step-Down (Buck)	Step-Down (Buck)	Step-Down (Buck)	Step-Down (Buck)
Applications	Commercial & Industrial Lighting	Commercial & Industrial Lighting	Commercial & Industrial Lighting	Commercial & Industrial Lighting
Voltage - Output	4.875V ~ 5.125V	4.875V ~ 5.125V	4.875V ~ 5.125V	4.875V ~ 5.125V
Frequency	400kHz	400kHz	2.1MHz	400kHz
Voltage - Supply (Max)	65V	65V	65V	65V
Package / Case	12-WFDFN Exposed Pad	12-WFDFN Exposed Pad	14-TSSOP (0.173", 4.40mm Width) Exposed Pad	14-TSSOP (0.173", 4.40mm Width) Exposed Pad
Supplier Device Package	12-TDFN (3x3)	12-TDFN (3x3)	14-TSSOP-EP	14-TSSOP-EP

MAX20050ATC/V+ Datasheet PDF

Download MAX20050ATC/V+ pdf datasheets and Analog Devices Inc./Maxim Integrated documentation for MAX20050ATC/V+ - Analog Devices Inc./Maxim Integrated.

Datasheets

[MAX20050-53.pdf](#)

Environmental Information

[Maxim Integrated REACH.pdf](#)

[Maxim Integrated RoHS Cert.pdf](#)

Customers Also Interested in

Recommended Products

**MAX20050ATC+T**

Analog Devices Inc./Maxim Integrated
IC LED DRVR RGLTR PWM 2A 12TDFN

**MAX20044UGEE/V+T**

Analog Devices Inc./Maxim Integrated
AUTOMOTIVE HI-SPEED USB 2.0 PROT

**MAX20053AUD/V+T**

Analog Devices Inc./Maxim Integrated
IC LED DRVR RGLTR PWM 2A 14TSSOP

**MAX20042FGEEA/V**

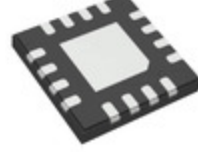
Analog Devices / Maxim Integrated

MAX20042UGEE/V+T

Analog Devices Inc./Maxim Integrated
AUTOMOTIVE HI-SPEED USB 2.0 PROT

MAX20044EGEE/V+

Analog Devices Inc./Maxim Integrated
AUTOMOTIVE HI-SPEED USB 2.0 PROT

**MAX20051AUD/V+**

Analog Devices Inc./Maxim Integrated
IC LED DRVR RGLTR PWM 2A 14TSSOP

MAX20044FGEEB/V+T

Analog Devices Inc./Maxim Integrated
AUTOMOTIVE HI-SPEED USB 2.0 PROT

MAX20049ATEA/VY+T

Analog Devices Inc./Maxim Integrated
MINI PMIC FOR REMOTE CAMERA POWE

MAX20051AUD/V+TW

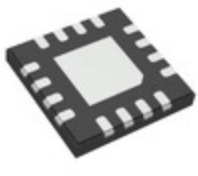
Analog Devices Inc./Maxim Integrated
IC LED DRVR RGLTR PWM 2A 14TSSOP

MAX20042FGEEB/V+T

Analog Devices Inc./Maxim Integrated
AUTOMOTIVE HI-SPEED USB 2.0 PROT

MAX20050ATC/V+T

Analog Devices Inc./Maxim Integrated
IC LED DRVR RGLTR PWM 2A 12TDFN

**MAX20049ATEF/VY+**

Analog Devices Inc./Maxim Integrated
MINI PMIC FOR REMOTE CAMERA POWE

MAX20051AUD/V+TCMS

Analog Devices Inc./Maxim Integrated
IC LED DRVR RGLTR PWM 2A 14TSSOP

MAX20051AUD/V+T

Analog Devices Inc./Maxim Integrated
IC LED DRVR RGLTR PWM 2A 14TSSOP

MAX20052ATC+

Analog Devices Inc./Maxim Integrated
IC LED DRVR RGLTR PWM 2A 12TDFN

MAX20051AAUD/V+T

Analog Devices Inc./Maxim Integrated
IC LED DRVR RGLTR PWM 2A 14TSSOP

MAX20043EGEE/V+T

Analog Devices Inc./Maxim Integrated
AUTOMOTIVE HI-SPEED USB 2.0 PROT

Shipment

Delivery Time

In-stock items can be shipped within 24 hours. Some parts will be arranged for delivery within 1-2 days from the date all items arrive at our warehouse. And Allelco ships order once a day at about 17:00, except Sunday. Once the goods are shipped, the estimated delivery time depends on the shipping methods and Delivery destination. The table below shows are the logistic time for some common countries.

Delivery Cost

- > Use your express account for shipment if you have one.
 - > Use our account for the shipment. Refer to the table below for the approximate charges.
- (Different time frame / countries / package size has different price.)

Delivery Method

- > Global Common Shipment by DHL / UPS / FedEx / TNT / EMS / SF we support.
- > Others more shipping ways, please get in touch with your customer manager.

Common Countries Logistic Time Reference		
Region	Country	Logistic Time(Day)
America	United States	5
	Brazil	7
Europe	Germany	5
	United Kingdom	4
	Italy	5
Oceania	Australia	6
	New Zealand	7
Asia	India	6
	Japan	7
Middle East	Israel	6

DHL & FedEx Shipment Charges Reference	
Shipment charges(KG)	Reference DHL(USD\$)
0.00kg-1.00kg	USD\$60.00
1.00kg-2.00kg	USD\$70.00
2.00kg-3.00kg	USD\$80.00

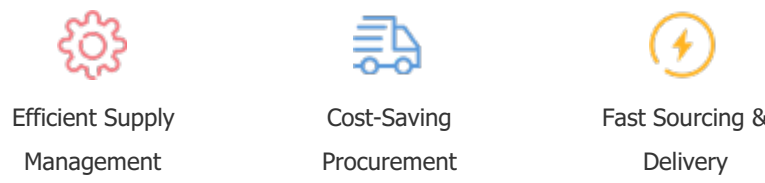
Note: The above table is for reference only. There may have some data bias for the uncontrollable factors.
Contact us if you have any questions.

Payment Support

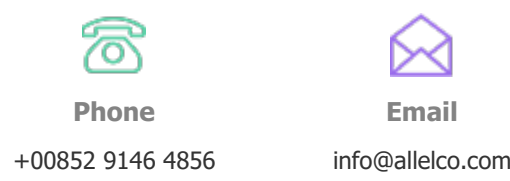
The payment method can be chosen from the methods shown below:
Wire Transfer (T/T, Bank Transfer), Western Union, Credit card, PayPal.



Your Faithful Supply Chain Partner -



Contact us if you have any questions.



Certifications & Memberships



[View More](#)