

Image may be representation.  
See specifications for product details.



## MAX8614BETD+T

Manufacturer Part Number	<b>MAX8614BETD+T</b>
Manufacturer	<b>Maxim Integrated</b>
Allelco Part Number	32D-MAX8614BETD+T
ECAD Model	Request Free CAD Models
Parts Description	IC REG CONV CCD 2OUT 14TDFN
Package	14-WFDFN Exposed Pad
Data sheet	<b>MAX8614A/B.pdf</b>
RoHs Status	<b>ROHS3 Compliant</b>

**Get a Quote**

MAX8614BETD+T - Analog Devices Inc./Maxim Integrated. New Original in Stock. Download Linear Technology MAX8614BETD+T datasheet/specifications on AllelcoElec.com.  
Request a quote for MAX8614BETD+T, please send us email: [info@allelco.com](mailto:info@allelco.com)

### Specifications

MAX8614BETD+T Tech Specifications  
MAX8614BETD+T - Analog Devices Inc./Maxim Integrated technical specifications, attributes, parameters

Product Attribute	Attribute Value	Product Attribute	Attribute Value
Manufacturer	Maxim Integrated	Package	Tape & Reel (TR)
Voltage - Output	Adj up to 24V, Adj down to -16V	Operating Temperature	-40°C ~ 85°C
Voltage - Input	3V ~ 5.5V	Number of Outputs	2
Supplier Device Package	14-TDFN (3x3)	Mounting Type	Surface Mount
Series	-	Base Product Number	MAX8614
Package / Case	14-WFDFN Exposed Pad	Applications	Converter, CCD

### Parts with Similar Specifications

The three parts on the right have similar specifications to Analog Devices Inc./Maxim Integrated MAX8614BETD+T

Product Attribute				
Part Number	MAX8614BETD+T	MAX8614AETD+	MAX8614BETD/V+T	MAX8614AETD+T
Manufacturer	Analog Devices Inc./Maxim Integrated	Maxim Integrated	Analog Devices Inc./Maxim Integrated	Analog Devices Inc./Maxim Integrated
Voltage - Output	Adj up to 24V, Adj down to -16V	-	Adj up to 24V, Adj down to -16V	Adj up to 24V, Adj down to -16V
Package / Case	14-WFDFN Exposed Pad	14-WFDFN Exposed Pad	14-WFDFN Exposed Pad	14-WFDFN Exposed Pad
Mounting Type	Surface Mount	Surface Mount	Surface Mount	Surface Mount
Package	Tape & Reel (TR)	-	Tape & Reel (TR)	Tape & Reel (TR)
Number of Outputs	2	-	2	2
Series	-	*	Automotive, AEC-Q100	-
Base Product Number	MAX8614	-	MAX8614	MAX8614
Operating Temperature	-40°C ~ 85°C	-	-40°C ~ 85°C	-40°C ~ 85°C
Applications	Converter, CCD	-	Converter, CCD	Converter, CCD
Supplier Device Package	14-TDFN (3x3)	14-TDFN (3x3)	14-TDFN (3x3)	14-TDFN (3x3)
Voltage - Input	3V ~ 5.5V	-	2.7V ~ 5.5V	3V ~ 5.5V

### MAX8614BETD+T Datasheet PDF

Download MAX8614BETD+T pdf datasheets and Analog Devices Inc./Maxim Integrated documentation for MAX8614BETD+T - Analog Devices Inc./Maxim Integrated.

#### Environmental Information

- Maxim Integrated REACH.pdf
- Maxim Integrated RoHS Cert.pdf
- Red Phosphorous Certificate.pdf

#### Part Numbering Guide

- Part Numbering System.pdf

#### HTML Datasheet

- MAX8614A/B.pdf

### Customers Also Interested in

#### Recommended Products

- |  |   |  |  |   |   |
|--|---|--|--|---|---|
|  |   |  |  |   |   |
| <b>MAX861CSA</b><br>Analog Devices Inc./Maxim Integrated<br>SWITCHED-CAP VOLTAGE CONVERTER | <b>MAX861ESA+</b><br>Analog Devices Inc./Maxim Integrated<br>IC REG CHARG PUMP INV 50MA 8SOIC | <b>MAX8614BTD</b><br>Analog Devices / Maxim Integrated | <b>MAX86141ENP+T</b><br>Analog Devices Inc./Maxim Integrated<br>IC SENSOR OXIMETER/HEARTRATE | <b>MAX8611VETM+CA9</b><br>Analog Devices / Maxim Integrated | <b>MAX8611VETM +TS</b><br>Analog Devices / Maxim Integrated |



### MAX8611VETM

Analog Devices / Maxim Integrated



### MAX86160AEFN+T

Analog Devices Inc./Maxim Integrated IC



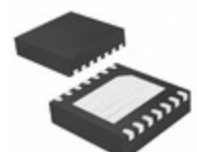
### MAX861ESA

Analog Devices Inc./Maxim Integrated SWITCHED-CAP VOLTAGE CONVERTER



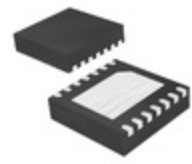
### MAX861ESA+T

Analog Devices Inc./Maxim Integrated IC REG CHARG PUMP INV 50MA 8SOIC



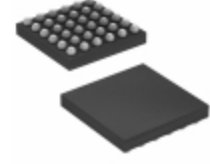
### MAX8614AETD+

Maxim Integrated IC DC-DC CONV DL CCD 14TDFN



### MAX8614BETD/V+T

Analog Devices Inc./Maxim Integrated IC REG CONV CCD 2OUT 14TDFN



### MAX86176ENX+T

Analog Devices Inc./Maxim Integrated PPG + ECG COMBO AFE WLP



### MAX8611VETM+T

Analog Devices Inc./Maxim Integrated 8-CH PMICS FOR DIGITAL CAMERA



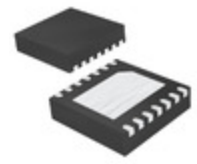
### MAX8611ETM+TG104

Analog Devices / Maxim Integrated



### MAX8616ETL+

Analog Devices / Maxim Integrated



### MAX8614AETD+T

Analog Devices Inc./Maxim Integrated IC REG CONV CCD 2OUT 14TDFN

## Shipment

### Delivery Time

In-stock items can be shipped within 24 hours. Some parts will be arranged for delivery within 1-2 days from the date all items arrive at our warehouse. And Allelco ships order once a day at about 17:00, except Sunday. Once the goods are shipped, the estimated delivery time depends on the shipping methods and Delivery destination. The table below shows are the logistic time for some common countries.

### Delivery Cost

> Use your express account for shipment if you have one.

> Use our account for the shipment. Refer to the table below for the approximate charges.

(Different time frame / countries / package size has different price.)

### Delivery Method

> Global Common Shipment by DHL / UPS / FedEx / TNT / EMS / SF we support.

> Others more shipping ways, please get in touch with your customer manager.

Common Countries Logistic Time Reference

Region	Country	Logistic Time(Day)
America	United States	5
	Brazil	7
Europe	Germany	5
	United Kingdom	4
	Italy	5
Oceania	Australia	6
	New Zealand	7
Asia	India	6
	Japan	7
Middle East	Israel	6

DHL & FedEx Shipment Charges Reference

Shipment charges(KG)	Reference DHL(USD\$)
0.00kg-1.00kg	USD\$60.00
1.00kg-2.00kg	USD\$70.00
2.00kg-3.00kg	USD\$80.00

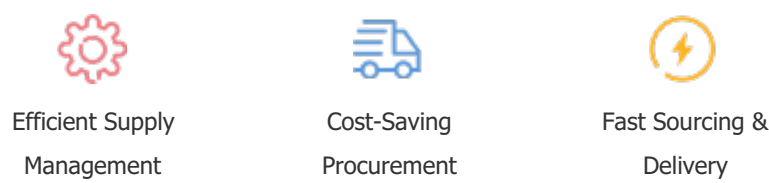
Note: The above table is for reference only. There may have some data bias for the uncontrollable factors. Contact us if you have any questions.

## Payment Support

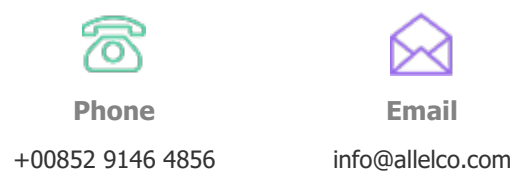
The payment method can be chosen from the methods shown below:  
Wire Transfer (T/T, Bank Transfer), Western Union, Credit card, PayPal.



## Your Faithful Supply Chain Partner -



Contact us if you have any questions.



## Certifications & Memberships



View More



### Contact us

Address: Flat/Rm C 13/F Harvard Commercial Building 105-111 Thomson Road, Wan Chai, Hong Kong

Phone: +00852 9146 4856

Fax: +00852 3010 8510

Email: info@Allelco.com

Copyright © 2012-2023 AllelcoElec.com. All rights reserved.