

Image may be representation.
See specifications for product details.



XC2VP20-6FF896I

Manufacturer Part Number	XC2VP20-6FF896I
Manufacturer	AMD Xilinx
Allelco Part Number	32D-XC2VP20-6FF896I
ECAD Model	Request Free CAD Models
Parts Description	IC FPGA 556 I/O 896FCBGA
Package	896-BBGA, FCBGA
Data sheet	Virtex-II Pro, Pro X.pdf

Get a Quote

XC2VP20-6FF896I - AMD.New Original in Stock. Download Linear Technology XC2VP20-6FF896I datasheet/specifications on AllelcoElec.com.
Request a quote for XC2VP20-6FF896I, please send us email: info@allelco.com

Specifications

XC2VP20-6FF896I Tech Specifications

XC2VP20-6FF896I - AMD technical specifications, attributes, parameters

Product Attribute	Attribute Value	Product Attribute	Attribute Value
Manufacturer	AMD Xilinx	Operating Temperature	-40°C ~ 100°C (TJ)
Voltage - Supply	1.425V ~ 1.575V	Number of Logic Elements/Cells	20880
Total RAM Bits	1622016	Number of LABs/CLBs	2320
Supplier Device Package	896-FCBGA (31x31)	Number of I/O	556
Series	Virtex®-II Pro	Mounting Type	Surface Mount
Package / Case	896-BBGA, FCBGA	Base Product Number	XC2VP20
Package	Tray		

Parts with Similar Specifications

The three parts on the right have similar specifications to AMD XC2VP20-6FF896I

Product Attribute				
Part Number	XC2VP20-6FF896I	XC2VP30-5FF1152C	XC2VP20-5FG676C	XC2VP20-5FG676I
Manufacturer	AMD	AMD	AMD	AMD
Mounting Type	Surface Mount	Surface Mount	Surface Mount	Surface Mount
Total RAM Bits	1622016	2506752	1622016	1622016
Base Product Number	XC2VP20	-	-	XC2VP20
Series	Virtex®-II Pro	Virtex®-II Pro	Virtex®-II Pro	Virtex®-II Pro
Number of LABs/CLBs	2320	3424	2320	2320
Operating Temperature	-40°C ~ 100°C (TJ)	0°C ~ 85°C (TJ)	0°C ~ 85°C (TJ)	-40°C ~ 100°C (TJ)
Number of Logic Elements/Cells	20880	30816	20880	20880
Supplier Device Package	896-FCBGA (31x31)	1152-FCBGA (35x35)	676-FBGA (27x27)	676-FBGA (27x27)
Package	Tray	Bulk	Bulk	Tray
Voltage - Supply	1.425V ~ 1.575V	1.425V ~ 1.575V	1.425V ~ 1.575V	1.425V ~ 1.575V
Package / Case	896-BBGA, FCBGA	1152-BBGA, FCBGA	676-BGA	676-BGA
Number of I/O	556	644	404	404

XC2VP20-6FF896I Datasheet PDF

Download XC2VP20-6FF896I pdf datasheets and AMD documentation for XC2VP20-6FF896I - AMD.

Datasheets

[Virtex-II Pro, Pro X.pdf](#)

Environmental Information

[Xilinx REACH211 Cert.pdf](#)

PCN Obsolescence/ EOL

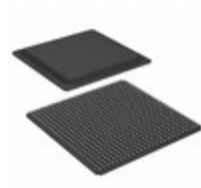
[Mult Dev EOL 6/Jan/2020.pdf](#)

Customers Also Interested in

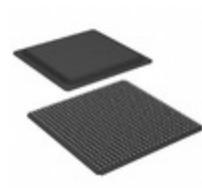
Recommended Products



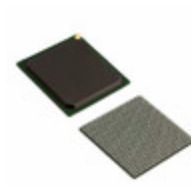
XC2VP30-5FF1152C
AMD
IC FPGA 644 I/O 1152FCBGA



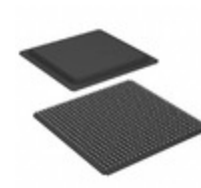
XC2VP20-5FG676C
AMD
IC FPGA 404 I/O 676FCBGA



XC2VP20-5FG676I
AMD
IC FPGA 404 I/O 676FCBGA



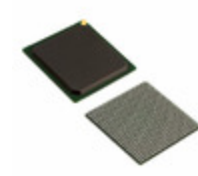
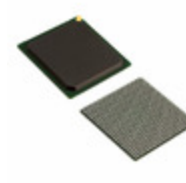
XC2VP20-5FGG676C
AMD
IC FPGA 404 I/O 676FCBGA



XC2VP20-6FG676I
AMD
IC FPGA 404 I/O 676FCBGA



XC2VP30-5FF1152I
AMD
IC FPGA 644 I/O 1152FCBGA

**XC2VP30-5FF896C**AMD
IC FPGA 556 I/O 896FCBGA**XC2VP20-6FF896C**AMD
IC FPGA 556 I/O 896FCBGA**XC2VP20-5FF896I**AMD
IC FPGA 556 I/O 896FCBGA**XC2VP20-5FFG896I**AMD
IC FPGA 556 I/O 896FCBGA**XC2VP20-5FGG676I**AMD
IC FPGA 404 I/O 676FBGA**XC2VP20-5FFG896C**AMD
IC FPGA 556 I/O 896FCBGA**XC2VP20-6FF1152I**AMD
IC FPGA 564 I/O 1152FCBGA**XC2VP20-6FFG1152I**AMD
IC FPGA 564 I/O 1152FCBGA**XC2VP20-7FF1152C**Xilinx
IC FPGA 564 I/O 1152FCBGA**XC2VP20-6FFG896C**AMD
IC FPGA 556 I/O 896FCBGA**XC2VP20-6FF1152C**AMD
IC FPGA 564 I/O 1152FCBGA**XC2VP20-6FGG676C**AMD
IC FPGA 404 I/O 676FBGA

Shipment

Delivery Time

In-stock items can be shipped within 24 hours. Some parts will be arranged for delivery within 1-2 days from the date all items arrive at our warehouse. And Allelco ships order once a day at about 17:00, except Sunday. Once the goods are shipped, the estimated delivery time depends on the shipping methods and Delivery destination. The table below shows are the logistic time for some common countries.

Delivery Cost

> Use your express account for shipment if you have one.

> Use our account for the shipment. Refer to the table below for the approximate charges.

(Different time frame / countries / package size has different price.)

Delivery Method

> Global Common Shipment by DHL / UPS / FedEx / TNT / EMS / SF we support.

> Others more shipping ways, please get in touch with your customer manager.

Common Countries Logistic Time Reference

Region	Country	Logistic Time(Day)
America	United States	5
	Brazil	7
Europe	Germany	5
	United Kingdom	4
	Italy	5
Oceania	Australia	6
	New Zealand	7
Asia	India	6
	Japan	7
Middle East	Israel	6

DHL & FedEx Shipment Charges Reference

Shipment charges(KG)	Reference DHL(USD\$)
0.00kg-1.00kg	USD\$60.00
1.00kg-2.00kg	USD\$70.00
2.00kg-3.00kg	USD\$80.00

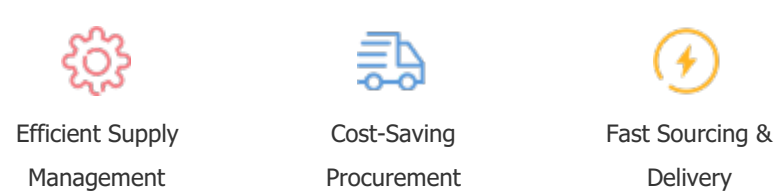
Note: The above table is for reference only. There may have some data bias for the uncontrollable factors. Contact us if you have any questions.

Payment Support

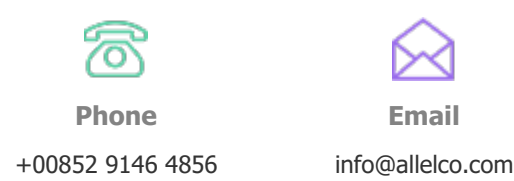
The payment method can be chosen from the methods shown below:
Wire Transfer (T/T, Bank Transfer), Western Union, Credit card, PayPal.



Your Faithful Supply Chain Partner -



Contact us if you have any questions.



Certifications & Memberships



[View More](#)



Contact us

Address: Flat/Rm C 13/F Harvard Commercial Building 105-111 Thomson Road, Wan Chai, Hong Kong

Phone: +00852 9146 4856

Fax: +00852 3010 8510

Email: info@Allelco.com

Copyright © 2012-2023 AllelcoElec.com. All rights reserved.