

Image may be representation.  
See specifications for product details.



## 5CEFA5U19C8N

Manufacturer Part Number	<b>5CEFA5U19C8N</b>
Manufacturer	<b>Intel</b>
Allelco Part Number	32D-5CEFA5U19C8N
ECAD Model	Request Free CAD Models
Parts Description	IC FPGA 224 I/O 484UBGA
Package	484-FBGA
Data sheet	<a href="#">Virtual JTAG Megafuntion Guide.pdf</a> <a href="#">Cyclone V Device Handbook.pdf</a> <a href="#">Cyclone V Device Overview.pdf</a>
RoHs Status	RoHS Compliant

**Get a Quote**

5CEFA5U19C8N - Intel.New Original in Stock. Download Linear Technology 5CEFA5U19C8N datasheet/specifications on AllelcoElec.com.  
Request a quote for 5CEFA5U19C8N, please send us email: [info@allelco.com](mailto:info@allelco.com)

### Specifications

5CEFA5U19C8N Tech Specifications

5CEFA5U19C8N - Intel technical specifications, attributes, parameters

Product Attribute	Attribute Value	Product Attribute	Attribute Value
Manufacturer	Intel	Operating Temperature	0°C ~ 85°C (TJ)
Voltage - Supply	1.07V ~ 1.13V	Number of Logic Elements/Cells	77000
Total RAM Bits	5001216	Number of LABs/CLBs	29080
Supplier Device Package	484-UBGA (19x19)	Number of I/O	224
Series	Cyclone® V E	Mounting Type	Surface Mount
Package / Case	484-FBGA	Base Product Number	5CEFA5
Package	Tray		

### Parts with Similar Specifications

The three parts on the right have similar specifications to Intel 5CEFA5U19C8N

Product Attribute				
Part Number	5CEFA5U19C8N	5CEFA4U19C8N	5CEFA7F2317N	5CEFA4U19C7N
Manufacturer	Intel	Intel	Intel	Intel
Supplier Device Package	484-UBGA (19x19)	484-UBGA (19x19)	484-FBGA (23x23)	484-UBGA (19x19)
Base Product Number	5CEFA5	5CEFA4	5CEFA7	5CEFA4
Number of Logic Elements/Cells	77000	49000	149500	49000
Operating Temperature	0°C ~ 85°C (TJ)	0°C ~ 85°C (TJ)	-40°C ~ 100°C (TJ)	0°C ~ 85°C (TJ)
Number of LABs/CLBs	29080	18480	56480	18480
Mounting Type	Surface Mount	Surface Mount	Surface Mount	Surface Mount
Voltage - Supply	1.07V ~ 1.13V	1.07V ~ 1.13V	1.07V ~ 1.13V	1.07V ~ 1.13V
Package / Case	484-FBGA	484-FBGA	484-BGA	484-FBGA
Package	Tray	Tray	Tray	Tray
Series	Cyclone® V E	Cyclone® V E	Cyclone® V E	Cyclone® V E
Total RAM Bits	5001216	3464192	7880704	3464192
Number of I/O	224	224	240	224

### 5CEFA5U19C8N Datasheet PDF

Download 5CEFA5U19C8N pdf datasheets and Intel documentation for 5CEFA5U19C8N - Intel.

#### Datasheets

Virtual JTAG Megafuntion Guide.pdf

Cyclone V Device Handbook.pdf

Cyclone V Device Overview.pdf

#### PCN Packaging

Mult Dev Label CHG 24/Jan/2020.pdf

Mult Dev Label Chgs 24/Feb/2020.pdf

#### PCN Design/Specification

Quartus SW/Web Chgs 23/Sep/2021.pdf

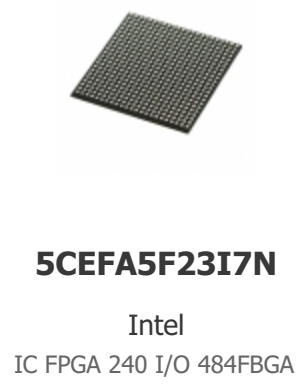
Mult Dev Software Chgs 3/Jun/2021.pdf

#### Errata

2.73KHz.pdf

### Customers Also Interested in

#### Recommended Products



## Shipment

### Delivery Time

In-stock items can be shipped within 24 hours. Some parts will be arranged for delivery within 1-2 days from the date all items arrive at our warehouse. And Allelco ships order once a day at about 17:00, except Sunday. Once the goods are shipped, the estimated delivery time depends on the shipping methods and Delivery destination. The table below shows are the logistic time for some common countries.

### Delivery Cost

> Use your express account for shipment if you have one.

> Use our account for the shipment. Refer to the table below for the approximate charges.

(Different time frame / countries / package size has different price.)

### Delivery Method

> Global Common Shipment by DHL / UPS / FedEx / TNT / EMS / SF we support.

> Others more shipping ways, please get in touch with your customer manager.

Common Countries Logistic Time Reference		
Region	Country	Logistic Time(Day)
America	United States	5
	Brazil	7
Europe	Germany	5
	United Kingdom	4
	Italy	5
Oceania	Australia	6
	New Zealand	7
Asia	India	6
	Japan	7
Middle East	Israel	6

DHL & FedEx Shipment Charges Reference	
Shipment charges(KG)	Reference DHL(USD\$)
0.00kg-1.00kg	USD\$60.00
1.00kg-2.00kg	USD\$70.00
2.00kg-3.00kg	USD\$80.00

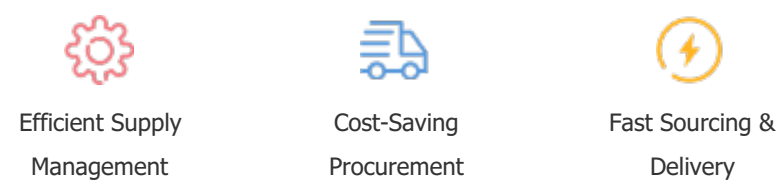
Note: The above table is for reference only. There may have some data bias for the uncontrollable factors.  
Contact us if you have any questions.

## Payment Support

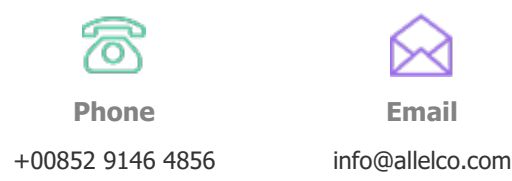
The payment method can be chosen from the methods shown below:  
Wire Transfer (T/T, Bank Transfer), Western Union, Credit card, PayPal.



## Your Faithful Supply Chain Partner -



Contact us if you have any questions.



## Certifications & Memberships



[View More](#)