



Image may be representation.  
See specifications for product details.



## MAX4094AUD+T

Manufacturer Part Number	<b>MAX4094AUD+T</b>
Manufacturer	<b>Maxim Integrated</b>
Allelco Part Number	32D-MAX4094AUD+T
ECAD Model	Request Free CAD Models
Parts Description	IC OPAMP GP 4 CIRCUIT 14TSSOP
Package	14-TSSOP (0.173", 4.40mm Width)
Data sheet	MAX4094AUD+T.pdf
RoHs Status	<b>ROHS3 Compliant</b>

**Get a Quote**

MAX4094AUD+T - Analog Devices Inc./Maxim Integrated.New Original in Stock. Download Linear Technology MAX4094AUD+T datasheet/specifications on AllelcoElec.com.  
Request a quote for MAX4094AUD+T, please send us email: [info@allelco.com](mailto:info@allelco.com)

### Specifications

MAX4094AUD+T Tech Specifications  
MAX4094AUD+T - Analog Devices Inc./Maxim Integrated technical specifications, attributes, parameters

Product Attribute	Attribute Value	Product Attribute	Attribute Value
Manufacturer	Maxim Integrated	Output Type	Rail-to-Rail
Voltage - Supply Span (Min)	2.7 V	Operating Temperature	-40°C ~ 125°C
Voltage - Supply Span (Max)	6 V	Number of Circuits	4
Voltage - Input Offset	30 µV	Mounting Type	Surface Mount
Supplier Device Package	14-TSSOP	Gain Bandwidth Product	500 kHz
Slew Rate	0.2V/µs	Current - Supply	130µA (x4 Channels)
Series	-	Current - Input Bias	20 nA
Package / Case	14-TSSOP (0.173", 4.40mm Width)	Base Product Number	MAX4094
Package	Tape & Reel (TR)	Amplifier Type	General Purpose

### Parts with Similar Specifications

The three parts on the right have similar specifications to Analog Devices Inc./Maxim Integrated MAX4094AUD+T

Product Attribute				
Part Number	MAX4094AUD+T	MAX409BESA	MAX4100ESA	MAX409BEPA
Manufacturer	Analog Devices Inc./Maxim Integrated	Analog Devices Inc./Maxim Integrated	Analog Devices Inc./Maxim Integrated	Analog Devices Inc./Maxim Integrated
Current - Input Bias	20 nA	0.1 pA	3 µA	0.1 pA
Operating Temperature	-40°C ~ 125°C	-40°C ~ 85°C	-40°C ~ 85°C	-40°C ~ 85°C
Slew Rate	0.2V/µs	0.08V/µs	250V/µs	0.08V/µs
Amplifier Type	General Purpose	General Purpose	Voltage Feedback	General Purpose
Package / Case	14-TSSOP (0.173", 4.40mm Width)	8-SOIC (0.154", 3.90mm Width)	8-SOIC (0.154", 3.90mm Width)	8-DIP (0.300", 7.62mm)
Output Type	Rail-to-Rail	Rail-to-Rail	Differential	Rail-to-Rail
Voltage - Supply Span (Max)	6 V	10 V	6 V	10 V
Gain Bandwidth Product	500 kHz	150 kHz	500 MHz	150 kHz
Mounting Type	Surface Mount	Surface Mount	Surface Mount	Through Hole
Voltage - Supply Span (Min)	2.7 V	2.5 V	2.5 V	2.5 V
Package	Tape & Reel (TR)	Tube	Bulk	Tube
Voltage - Input Offset	30 µV	750 µV	1 mV	750 µV
Current - Supply	130µA (x4 Channels)	1µA	5mA	1µA
Series	-	-	-	-
Number of Circuits	4	1	1	1
Supplier Device Package	14-TSSOP	8-SOIC	8-SOIC	8-PDIP
Base Product Number	MAX4094	MAX409	-	MAX409

### MAX4094AUD+T Datasheet PDF

Download MAX4094AUD+T pdf datasheets and Analog Devices Inc./Maxim Integrated documentation for MAX4094AUD+T - Analog Devices Inc./Maxim Integrated.

#### Environmental Information

Maxim Integrated REACH.pdf

Maxim Integrated RoHS Cert.pdf

#### Part Numbering Guide

Part Numbering System.pdf

### Customers Also Interested in

#### Recommended Products



### MAX409BESA

Analog Devices Inc./Maxim Integrated  
IC OPAMP GP 1 CIRCUIT 8SOIC



### MAX4100ESA

Analog Devices Inc./Maxim Integrated  
IC VOLTAGE FEEDBACK 1 CIRC 8SOIC



### MAX409BEPA

Analog Devices Inc./Maxim Integrated  
IC OPAMP GP 1 CIRCUIT 8DIP



### MAX4094ASD+T

Analog Devices Inc./Maxim Integrated  
IC OPAMP GP 4 CIRCUIT 14SOIC



### MAX409AESA

Analog Devices Inc./Maxim Integrated  
IC OPAMP GP 1 CIRCUIT 8SOIC



### MAX4094ASD

Analog Devices / Maxim Integrated



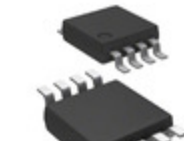
### MAX4092ASA

Analog Devices Inc./Maxim Integrated  
IC OPAMP GP 2 CIRCUIT 8SOIC



### MAX409BCSA

Analog Devices Inc./Maxim Integrated  
IC OPAMP GP 1 CIRCUIT 8SOIC



### MAX4092AUA

Analog Devices Inc./Maxim Integrated  
IC OPAMP GP 2 CIRCUIT 8UMAX



### MAX4092ASA+

Analog Devices Inc./Maxim Integrated  
IC OPAMP GP 2 CIRCUIT 8SOIC



### MAX4092ASA+T

Analog Devices Inc./Maxim Integrated  
IC OPAMP GP 2 CIRCUIT 8SOIC



### MAX4092AUA+T

Analog Devices Inc./Maxim Integrated  
IC OPAMP GP 2 CIRCUIT 8UMAX



### MAX4091AUK-T

Analog Devices / Maxim Integrated



### MAX4102ESA

Analog Devices Inc./Maxim Integrated  
IC OPAMP LP VIDEO 250MHZ 8-SOIC



### MAX4101ESA

Analog Devices Inc./Maxim Integrated  
IC OPAMP 3DB B/W 200MHZ 8-SOIC



### MAX409BCPA

Analog Devices Inc./Maxim Integrated  
IC OPAMP GP 1 CIRCUIT 8DIP



### MAX4092AUA+

Analog Devices Inc./Maxim Integrated  
IC OPAMP GP 2 CIRCUIT 8UMAX

## Shipment

### Delivery Time

In-stock items can be shipped within 24 hours. Some parts will be arranged for delivery within 1-2 days from the date all items arrive at our warehouse. And Alleco ships order once a day at about 17:00, except Sunday. Once the goods are shipped, the estimated delivery time depends on the shipping methods and Delivery destination. The table below shows are the logistic time for some common countries.

### Delivery Cost

> Use your express account for shipment if you have one.

> Use our account for the shipment. Refer to the table below for the approximate charges.

(Different time frame / countries / package size has different price.)

### Delivery Method

> Global Common Shipment by DHL / UPS / FedEx / TNT / EMS / SF we support.

> Others more shipping ways, please get in touch with your customer manager.

Common Countries Logistic Time Reference		
Region	Country	Logistic Time(Day)
America	United States	5
	Brazil	7
Europe	Germany	5
	United Kingdom	4
	Italy	5
Oceania	Australia	6
	New Zealand	7
Asia	India	6
	Japan	7
Middle East	Israel	6

DHL & FedEx Shipment Charges Reference	
Shipment charges(KG)	Reference DHL(USD\$)
0.00kg-1.00kg	USD\$60.00
1.00kg-2.00kg	USD\$70.00
2.00kg-3.00kg	USD\$80.00

Note: The above table is for reference only. There may have some data bias for the uncontrollable factors.

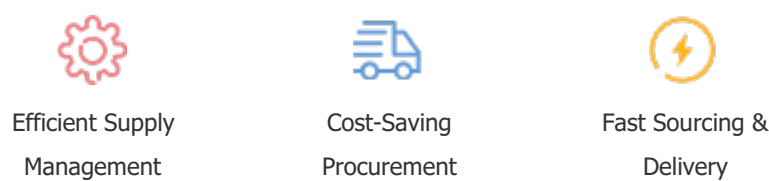
Contact us if you have any questions.

## Payment Support

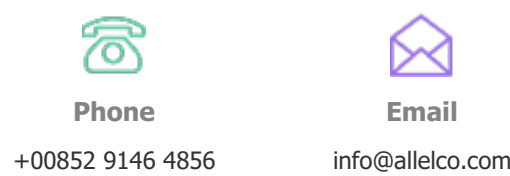
The payment method can be chosen from the methods shown below:  
Wire Transfer (T/T, Bank Transfer), Western Union, Credit card, PayPal.



## Your Faithful Supply Chain Partner -



Contact us if you have any questions.



## Certifications & Memberships



[View More](#)



WWW.ALLECOELEC.COM

### Contact us

Address: Flat/Rm C 13/F Harvard Commercial Building 105-111 Thomson Road, Wan Chai, Hong Kong

Phone: +00852 9146 4856

Fax: +00852 3010 8510

Email: info@Alleco.com

Copyright © 2012-2023 AllecoElec.com. All rights reserved.