

Image may be representation.  
See specifications for product details.



## STM32F103T8U6

Manufacturer Part Number	<b>STM32F103T8U6</b>
Manufacturer	<b>STMicroelectronics</b>
Allelco Part Number	32D-STM32F103T8U6
ECAD Model	PCB Symbol, Footprint & 3D Mode
Parts Description	IC MCU 32BIT 64KB FLASH 36VQFPN
Package	36-VFQFN Exposed Pad
Data sheet	<b>Cylindrical Battery Holders.pdf</b>
RoHs Status	<b>ROHS3 Compliant</b>

**Get a Quote**

STM32F103T8U6 - STMicroelectronics.New Original in Stock. Download Linear Technology STM32F103T8U6 datasheet/specifications on AllelcoElec.com.  
Request a quote for STM32F103T8U6, please send us email: [info@allelco.com](mailto:info@allelco.com)

### Specifications

STM32F103T8U6 Tech Specifications

STM32F103T8U6 - STMicroelectronics technical specifications, attributes, parameters

Product Attribute	Attribute Value	Product Attribute	Attribute Value
Manufacturer	STMicroelectronics	Oscillator Type	Internal
Voltage - Supply (Vcc/Vdd)	2V ~ 3.6V	Operating Temperature	-40°C ~ 85°C (TA)
Supplier Device Package	36-VFQFPN (6x6)	Number of I/O	26
Speed	72MHz	Mounting Type	Surface Mount
Series	STM32F1	EEPROM Size	-
RAM Size	20K x 8	Data Converters	A/D 10x12b
Program Memory Type	FLASH	Core Size	32-Bit Single-Core
Program Memory Size	64KB (64K x 8)	Core Processor	ARM® Cortex®-M3
Peripherals	DMA, Motor Control PWM, PDR, POR, PVD, PWM, Temp Sensor, WDT	Connectivity	CANbus, I <sup>2</sup> C, IrDA, LINbus, SPI, UART/USART, USB
Package / Case	36-VFQFN Exposed Pad	Base Product Number	STM32F103
Package	Tray		

### Parts with Similar Specifications

The three parts on the right have similar specifications to STMicroelectronics STM32F103T8U6

Product Attribute				
Part Number	STM32F103T8U6	STM32F103VBT6	STM32F103T6U6A	STM32F103RFT6
Manufacturer	STMicroelectronics	STMicroelectronics	STMicroelectronics	STMicroelectronics
Peripherals	DMA, Motor Control PWM, PDR, POR, PVD, PWM, Temp Sensor, WDT	DMA, Motor Control PWM, PDR, POR, PVD, PWM, Temp Sensor, WDT	DMA, Motor Control PWM, PDR, POR, PVD, PWM, Temp Sensor, WDT	DMA, Motor Control PWM, PDR, POR, PVD, PWM, Temp Sensor, WDT
Package / Case	36-VFQFN Exposed Pad	100-LQFP	36-VFQFN Exposed Pad	64-LQFP
EEPROM Size	-	-	-	-
Speed	72MHz	72MHz	72MHz	72MHz
Series	STM32F1	STM32F1	STM32F1	STM32F1
Core Processor	ARM® Cortex®-M3	ARM® Cortex®-M3	ARM® Cortex®-M3	ARM® Cortex®-M3
RAM Size	20K x 8	20K x 8	10K x 8	96K x 8
Operating Temperature	-40°C ~ 85°C (TA)	-40°C ~ 85°C (TA)	-40°C ~ 85°C (TA)	-40°C ~ 85°C (TA)
Program Memory Type	FLASH	FLASH	FLASH	FLASH
Connectivity	CANbus, I <sup>2</sup> C, IrDA, LINbus, SPI, UART/USART, USB	CANbus, I <sup>2</sup> C, IrDA, LINbus, SPI, UART/USART, USB	CANbus, I <sup>2</sup> C, IrDA, LINbus, SPI, UART/USART, USB	CANbus, I <sup>2</sup> C, IrDA, LINbus, SPI, UART/USART, USB
Program Memory Size	64KB (64K x 8)	128KB (128K x 8)	32KB (32K x 8)	768KB (768K x 8)
Data Converters	A/D 10x12b	A/D 16x12b	A/D 10x12b	A/D 16x12b; D/A 2x12b
Oscillator Type	Internal	Internal	Internal	Internal
Number of I/O	26	80	26	51
Package	Tray	Tray	Tray	Tray
Voltage - Supply (Vcc/Vdd)	2V ~ 3.6V	2V ~ 3.6V	2V ~ 3.6V	2V ~ 3.6V
Mounting Type	Surface Mount	Surface Mount	Surface Mount	Surface Mount
Supplier Device Package	36-VFQFPN (6x6)	-	36-VFQFPN (6x6)	64-LQFP (10x10)
Base Product Number	STM32F103	STM32F103	STM32F103	STM32F103
Core Size	32-Bit Single-Core	32-Bit Single-Core	32-Bit Single-Core	32-Bit Single-Core

### STM32F103T8U6 Datasheet PDF

Download STM32F103T8U6 pdf datasheets and STMicroelectronics documentation for STM32F103T8U6 - STMicroelectronics.

#### Datasheets

Cylindrical Battery Holders.pdf

#### PCN Packaging

2.73KHz.pdf

PCN Assembly/Origin

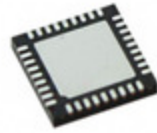
VFQFPN 08/Jul/2016.pdf

## Customers Also Interested in

### Recommended Products



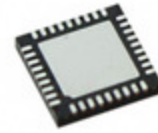
**STM32F103VBT6**  
STMicroelectronics  
IC MCU 32BIT 128KB FLASH  
100LQFP



**STM32F103T6U6A**  
STMicroelectronics  
IC MCU 32BIT 32KB FLASH  
36VFQFPN



**STM32F103RFT6**  
STMicroelectronics  
IC MCU 32BIT 768KB FLASH 64LQFP



**STM32F103TBU6**  
STMicroelectronics  
IC MCU 32BIT 128KB FLSH  
36VFQFPN



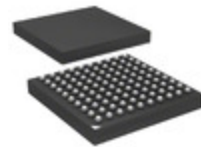
**STM32F103VBH6,32**  
STMicroelectronics



**STM32F103T8U7**  
STMicroelectronics  
IC MCU 32BIT 64KB FLASH  
36VFQFPN



**STM32F103RFT6TR**  
STMicroelectronics  
IC MCU 32BIT 768KB FLASH 64LQFP



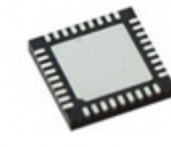
**STM32F103VBH6**  
STMicroelectronics  
IC MCU 32BIT 128KB FLASH 100BGA



**STM32F103VB16**  
STMicroelectronics  
IC MCU 32BIT 128KB FLSH  
100UFBGA



**STM32F103T8U7TR**  
STMicroelectronics  
IC MCU 32BIT 64KB FLASH  
36VFQFPN



**STM32F103T6U7A**  
STMicroelectronics  
IC MCU 32BIT 32KB FLASH  
36VFQFPN



**STM32F103RGT6**  
STMicroelectronics  
IC MCU 32BIT 1MB FLASH 64LQFP



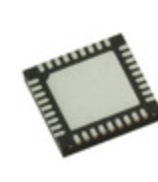
**STM32F103RGT7**  
STMicroelectronics  
IC MCU 32BIT 1MB FLASH 64LQFP



**STM32F103VB8T6**  
STMicroelectronics  
IC MCU 32BIT 64KB FLASH 100LQFP



**STM32F103T8U6TR**  
STMicroelectronics  
IC MCU 32BIT 64KB FLASH  
36VFQFPN



**STM32F103T4U6A**  
STMicroelectronics  
IC MCU 32BIT 16KB FLASH  
36VFQFPN



**STM32F103REY6TR**  
STMicroelectronics  
IC MCU 32BIT 512KB FLASH  
64WLCSF



**STM32F103S6T6A**  
STMicroelectronics

## Shipment

### Delivery Time

In-stock items can be shipped within 24 hours. Some parts will be arranged for delivery within 1-2 days from the date all items arrive at our warehouse. And Allelco ships order once a day at about 17:00, except Sunday. Once the goods are shipped, the estimated delivery time depends on the shipping methods and Delivery destination. The table below shows are the logistic time for some common countries.

### Delivery Cost

- > Use your express account for shipment if you have one.
  - > Use our account for the shipment. Refer to the table below for the approximate charges.
- (Different time frame / countries / package size has different price.)

### Delivery Method

- > Global Common Shipment by DHL / UPS / FedEx / TNT / EMS / SF we support.
- > Others more shipping ways, please get in touch with your customer manager.

Common Countries Logistic Time Reference

Region	Country	Logistic Time(Day)
America	United States	5
	Brazil	7
Europe	Germany	5
	United Kingdom	4
	Italy	5
Oceania	Australia	6
	New Zealand	7
Asia	India	6
	Japan	7
Middle East	Israel	6

DHL & FedEx Shipment Charges Reference

Shipment charges(KG)	Reference DHL(USD\$)
0.00kg-1.00kg	USD\$60.00
1.00kg-2.00kg	USD\$70.00
2.00kg-3.00kg	USD\$80.00

**Note:** The above table is for reference only. There may have some data bias for the uncontrollable factors.  
Contact us if you have any questions.

### Payment Support

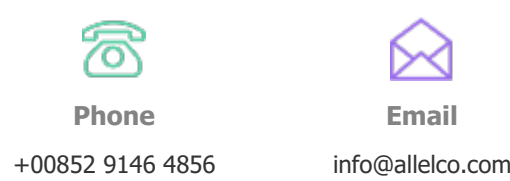
The payment method can be chosen from the methods shown below:  
Wire Transfer (T/T, Bank Transfer), Western Union, Credit card,  
PayPal.



### Your Faithful Supply Chain Partner -



Contact us if you have any questions.



### Certifications & Memberships



View More