

Image may be representation.  
See specifications for product details.



## AD5696RBCPZ-RL7

Manufacturer Part Number	<b>AD5696RBCPZ-RL7</b>
Manufacturer	<b>Analog Devices, Inc.</b>
Allelco Part Number	32D-AD5696RBCPZ-RL7
ECAD Model	PCB Symbol, Footprint & 3D Model
Parts Description	IC DAC 16BIT V-OUT 16LFCSP
Package	16-WFQFN Exposed Pad, CSP
Data sheet	<b>Cylindrical Battery Holders.pdf</b>
RoHs Status	<b>ROHS3 Compliant</b>

**Get a Quote**

AD5696RBCPZ-RL7 - Analog Devices Inc..New Original in Stock. Download Linear Technology AD5696RBCPZ-RL7 datasheet/specifications on AllelcoElec.com.  
Request a quote for AD5696RBCPZ-RL7, please send us email: [info@allelco.com](mailto:info@allelco.com)

### Specifications

AD5696RBCPZ-RL7 Tech Specifications  
AD5696RBCPZ-RL7 - Analog Devices Inc. technical specifications, attributes, parameters

Product Attribute	Attribute Value	Product Attribute	Attribute Value
Manufacturer	Analog Devices, Inc.	Operating Temperature	-40°C ~ 105°C
Voltage - Supply, Digital	1.8V ~ 5.5V	Number of D/A Converters	4
Voltage - Supply, Analog	2.7V ~ 5.5V	Number of Bits	16
Supplier Device Package	16-LFCSP (3x3)	Mounting Type	Surface Mount
Settling Time	8µs	INL/DNL (LSB)	±1, ±1 (Max)
Series	nanoDAC+®	Differential Output	No
Reference Type	External, Internal	Data Interface	I²C
Package / Case	16-WFQFN Exposed Pad, CSP	Base Product Number	AD5696
Package	Tape & Reel (TR)	Architecture	String DAC
Output Type	Voltage - Buffered		

### Parts with Similar Specifications

The three parts on the right have similar specifications to Analog Devices Inc. AD5696RBCPZ-RL7

Product Attribute				
Part Number	AD5696RBCPZ-RL7	AD569BD	AD569JN	AD5696BRUZ-RL7
Manufacturer	Analog Devices Inc.	Analog Devices Inc.	Analog Devices Inc.	Analog Devices Inc.
INL/DNL (LSB)	±1, ±1 (Max)	±0.020, ±0.5	±0.02, ±0.5	±1, ±1 (Max)
Mounting Type	Surface Mount	Through Hole	Through Hole	Surface Mount
Package	Tape & Reel (TR)	Tube	Tube	Tape & Reel (TR)
Base Product Number	AD5696	AD569	AD569	AD5696
Data Interface	I²C	Parallel	Parallel	I²C
Reference Type	External, Internal	External	External	External
Operating Temperature	-40°C ~ 105°C	-25°C ~ 85°C	0°C ~ 70°C	-40°C ~ 105°C
Package / Case	16-WFQFN Exposed Pad, CSP	28-CDIP (0.600', 15.24mm)	28-DIP (0.600', 15.24mm)	16-TSSOP (0.173', 4.40mm Width)
Number of D/A Converters	4	1	1	4
Differential Output	No	No	No	No
Number of Bits	16	16	16	16
Series	nanoDAC+®	-	-	nanoDAC+®
Output Type	Voltage - Buffered	Voltage - Buffered	Voltage - Buffered	Voltage - Buffered
Voltage - Supply, Analog	2.7V ~ 5.5V	±10.8V ~ 13.2V	±10.8V ~ 13.2V	2.7V ~ 5.5V
Architecture	String DAC	Segmented DAC	Segmented DAC	String DAC
Voltage - Supply, Digital	1.8V ~ 5.5V	-	-	1.8V ~ 5.5V
Settling Time	8µs	6µs	6µs	8µs
Supplier Device Package	16-LFCSP (3x3)	28-CDIP	28-PDIP	16-TSSOP

### AD5696RBCPZ-RL7 Datasheet PDF

Download AD5696RBCPZ-RL7 pdf datasheets and Analog Devices Inc. documentation for AD5696RBCPZ-RL7 - Analog Devices Inc..

#### Datasheets

[Cylindrical Battery Holders.pdf](#)


#### Other Related Documents

[Tape and Reel Packaging.pdf](#)

#### PCN Design/Specification

[AD5 08/Jul/2016.pdf](#)

[AD531x,AD568x,AD569x Datasheet Update 20/Jan/2014.pdf](#)

 2.73KHz.pdf

## Customers Also Interested in

### Recommended Products



**AD569BD**  
Analog Devices Inc.  
IC DAC 16BIT V-OUT 28CDIP



**AD569JN**  
Analog Devices Inc.  
IC DAC 16BIT V-OUT 28DIP



**AD5696BRUZ-RL7**  
Analog Devices Inc.  
IC DAC 16BIT V-OUT 16TSSOP



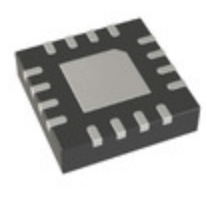
**AD5695RBRUZ-RL7**  
Analog Devices Inc.  
IC DAC 14BIT V-OUT 16TSSOP



**AD5696RBRUZ**  
Analog Devices Inc.  
IC DAC 16BIT V-OUT 16TSSOP



**AD569AD**  
Analog Devices Inc.  
IC DAC 16BIT V-OUT 28CDIP



**AD5697RBCPZ-RL7**  
Analog Devices Inc.  
IC DAC 12BIT V-OUT 16LFCSP



**AD5697RBRUZ**  
Analog Devices Inc.  
IC DAC 12BIT V-OUT 16TSSOP



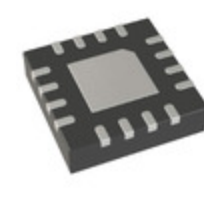
**AD569JPZ**  
Analog Devices Inc.  
IC DAC 16BIT V-OUT 28PLCC



**AD5696RARUZ**  
Analog Devices Inc.  
IC DAC 16BIT V-OUT 16TSSOP



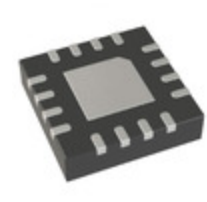
**AD5696BRUZ**  
Analog Devices Inc.  
IC DAC 16BIT V-OUT 16TSSOP



**AD5696BCPZ-RL7**  
Analog Devices Inc.  
IC DAC 16BIT V-OUT 16LFCSP



**AD5695RBRUZ**  
Analog Devices Inc.  
IC DAC 14BIT V-OUT 16TSSOP



**AD5696ACPZ-RL7**  
Analog Devices Inc.  
IC DAC 16BIT V-OUT 16LFCSP



**AD5696RARUZ-RL7**  
Analog Devices Inc.  
IC DAC 16BIT V-OUT 16TSSOP



**AD569JP**  
Analog Devices Inc.  
IC DAC 16BIT V-OUT 28PLCC



**AD5694RBRUZ**  
Analog Devices Inc.  
IC DAC 12BIT V-OUT 16TSSOP



**AD5696ARUZ**  
Analog Devices Inc.  
IC DAC 16BIT V-OUT 16TSSOP

## Shipment

### Delivery Time

In-stock items can be shipped within 24 hours. Some parts will be arranged for delivery within 1-2 days from the date all items arrive at our warehouse. And Allelco ships order once a day at about 17:00, except Sunday. Once the goods are shipped, the estimated delivery time depends on the shipping methods and Delivery destination. The table below shows are the logistic time for some common countries.

### Delivery Cost

- > Use your express account for shipment if you have one.
  - > Use our account for the shipment. Refer to the table below for the approximate charges.
- (Different time frame / countries / package size has different price.)

### Delivery Method

- > Global Common Shipment by DHL / UPS / FedEx / TNT / EMS / SF we support.
- > Others more shipping ways, please get in touch with your customer manager.

Common Countries Logistic Time Reference

Region	Country	Logistic Time(Day)
America	United States	5
	Brazil	7
Europe	Germany	5
	United Kingdom	4
	Italy	5
Oceania	Australia	6
	New Zealand	7
Asia	India	6
	Japan	7
Middle East	Israel	6

DHL & FedEx Shipment Charges Reference

Shipment charges(KG)	Reference DHL(USD\$)
0.00kg-1.00kg	USD\$60.00
1.00kg-2.00kg	USD\$70.00
2.00kg-3.00kg	USD\$80.00




**Note:** The above table is for reference only. There may have some data bias for the uncontrollable factors. Contact us if you have any questions.

### Payment Support



The payment method can be chosen from the methods shown below:  
Wire Transfer (T/T, Bank Transfer), Western Union, Credit card, PayPal.



### Your Faithful Supply Chain Partner -

-  Efficient Supply Management
-  Cost-Saving Procurement
-  Fast Sourcing & Delivery

Contact us if you have any questions.

-  Phone  
+00852 9146 4856
-  Email  
info@allelco.com

### Certifications & Memberships



[View More](#)

### Contact us

Address: Flat/Rm C 13/F Harvard Commercial Building 105-111 Thomson Road, Wan Chai, Hong Kong  
Phone: +00852 9146 4856  
Fax: +00852 3010 8510  
Email: info@Allelco.com