



# IXFN48N50

Manufacturer Part Number	<b>IXFN48N50</b>
Manufacturer	<b>IXYS Corporation</b>
Allelco Part Number	32D-IXFN48N50
ECAD Model	Request Free CAD Models
Parts Description	MOSFET N-CH 500V 48A SOT-227B
Package	SOT-227-4, miniBLOC
Data sheet	<b>IXFx4xN50.pdf</b>
RoHs Status	ROHS3 Compliant

Get a Quote

IXFN48N50 - IXYS.New Original in Stock. Download Linear Technology IXFN48N50 datasheet/specifications on AllelcoElec.com.  
Request a quote for IXFN48N50, please send us email: [info@allelco.com](mailto:info@allelco.com)

## Specifications

IXFN48N50 Tech Specifications  
IXFN48N50 - IXYS technical specifications, attributes, parameters

Product Attribute	Attribute Value	Product Attribute	Attribute Value
Manufacturer	IXYS Corporation	Operating Temperature	-55°C ~ 150°C (TJ)
Vgs(th) (Max) @ Id	4V @ 8mA	Mounting Type	Chassis Mount
Vgs (Max)	±20V	Input Capacitance (Ciss) (Max) @ Vds	8400 pF @ 25 V
Technology	MOSFET (Metal Oxide)	Gate Charge (Qg) (Max) @ Vgs	270 nC @ 10 V
Supplier Device Package	SOT-227B	FET Type	N-Channel
Series	HiPerFET™	FET Feature	-
Rds On (Max) @ Id, Vgs	100mOhm @ 500mA, 10V	Drive Voltage (Max Rds On, Min Rds On)	10V
Power Dissipation (Max)	520W (Tc)	Drain to Source Voltage (Vdss)	500 V
Package / Case	SOT-227-4, miniBLOC	Current - Continuous Drain (Id) @ 25°C	48A (Tc)
Package	Tube	Base Product Number	IXFN48

## Parts with Similar Specifications

The three parts on the right have similar specifications to IXYS IXFN48N50

Product Attribute	NO PICTURE			
Part Number	IXFN48N50	IXFN50N120SK	IXFN44N100Q3	IXFN44N50U3
Manufacturer	IXYS	IXYS	IXYS	IXYS
Package / Case	SOT-227-4, miniBLOC	SOT-227-4, miniBLOC	SOT-227-4, miniBLOC	SOT-227-4, miniBLOC
Vgs (Max)	±20V	+20V, -5V	±30V	±20V
Drive Voltage (Max Rds On, Min Rds On)	10V	20V	10V	10V
Base Product Number	IXFN48	IXFN50	IXFN44	IXFN44
FET Feature	-	-	-	-
Rds On (Max) @ Id, Vgs	100mOhm @ 500mA, 10V	52mOhm @ 40A, 20V	220mOhm @ 22A, 10V	120mOhm @ 500mA, 10V
Vgs(th) (Max) @ Id	4V @ 8mA	2.8V @ 10mA	6.5V @ 8mA	4V @ 8mA
Package	Tube	Tube	Tube	Tube
Input Capacitance (Ciss) (Max) @ Vds	8400 pF @ 25 V	1895 pF @ 1000 V	13600 pF @ 25 V	8400 pF @ 25 V
Series	HiPerFET™	-	HiPerFET™, Q3 Class	HiPerFET™
Power Dissipation (Max)	520W (Tc)	-	960W (Tc)	520W (Tc)
Mounting Type	Chassis Mount	Chassis Mount	Chassis Mount	Chassis Mount
Technology	MOSFET (Metal Oxide)	SiCFET (Silicon Carbide)	MOSFET (Metal Oxide)	MOSFET (Metal Oxide)
Drain to Source Voltage (Vdss)	500 V	1200 V	1000 V	500 V
Operating Temperature	-55°C ~ 150°C (TJ)	-40°C ~ 175°C (TJ)	-55°C ~ 150°C (TJ)	-40°C ~ 150°C (TJ)
Gate Charge (Qg) (Max) @ Vgs	270 nC @ 10 V	115 nC @ 20 V	264 nC @ 10 V	270 nC @ 10 V
Current - Continuous Drain (Id) @ 25°C	48A (Tc)	48A (Tc)	38A (Tc)	44A (Tc)
Supplier Device Package	SOT-227B	SOT-227B	SOT-227B	SOT-227B
FET Type	N-Channel	N-Channel	N-Channel	N-Channel

## IXFN48N50 Datasheet PDF

Download IXFN48N50 pdf datasheets and IXYS documentation for IXFN48N50 - IXYS.

### Datasheets

IXFx4xN50.pdf

## Customers Also Interested in

### Recommended Products



**IXFN50N120SK**

IXYS  
SICFET N-CH 1200V 48A SOT-227B

**IXFN44N100Q3**

IXYS  
MOSFET N-CH 1000V 38A SOT227B

**IXFN44N50U3**

IXYS  
MOSFET N-CH 500V 44A SOT-227B

**IXFN44N80**

IXYS  
MOSFET N-CH 800V 44A SOT-227B

**IXFN48N55**

IXYS  
MOSFET N-CH 550V 48A SOT-227B

**IXFN48N50Q**

IXYS  
MOSFET N-CH 500V 48A SOT-227B



**IXFN44N100P**

IXYS  
MOSFET N-CH 1000V 37A SOT-227B

**IXFN48N50U2**

IXYS  
MOSFET N-CH 500V 48A SOT-227B

**IXFN48N60P**

IXYS  
MOSFET N-CH 600V 40A SOT227B

**IXFN50N120**

IXYS / Littelfuse  
IGBT Module

**IXFN44N50U2**

IXYS  
MOSFET N-CH 500V 44A SOT-227B

**IXFN47N50**

IXYS / Littelfuse  
IGBT Module



**IXFN50N120SIC**

IXYS  
SICFET N-CH 1200V 47A SOT227B

**IXFN48N50U3**

IXYS  
MOSFET N-CH 500V 48A SOT-227B

**IXFN44N50Q**

IXYS  
MOSFET N-CH 500V 44A SOT-227B

**IXFN44N60**

IXYS  
MOSFET N-CH 600V 44A SOT-227B

**IXFN50N120S1C**

IXYS / Littelfuse  
IGBT Module

**IXFN44N50**

IXYS  
MOSFET N-CH 500V 44A SOT-227B

## Shipment

### Delivery Time

In-stock items can be shipped within 24 hours. Some parts will be arranged for delivery within 1-2 days from the date all items arrive at our warehouse. And Allelco ships order once a day at about 17:00, except Sunday. Once the goods are shipped, the estimated delivery time depends on the shipping methods and Delivery destination. The table below shows are the logistic time for some common countries.

### Delivery Cost

> Use your express account for shipment if you have one.

> Use our account for the shipment. Refer to the table below for the approximate charges.

(Different time frame / countries / package size has different price.)

### Delivery Method

> Global Common Shipment by DHL / UPS / FedEx / TNT / EMS / SF we support.

> Others more shipping ways, please get in touch with your customer manager.

Common Countries Logistic Time Reference

Region	Country	Logistic Time(Day)
America	United States	5
	Brazil	7
Europe	Germany	5
	United Kingdom	4
	Italy	5
Oceania	Australia	6
	New Zealand	7
Asia	India	6
	Japan	7
Middle East	Israel	6

DHL & FedEx Shipment Charges Reference

Shipment charges(KG)	Reference DHL(USD\$)
0.00kg-1.00kg	USD\$60.00
1.00kg-2.00kg	USD\$70.00
2.00kg-3.00kg	USD\$80.00

Note: The above table is for reference only. There may have some data bias for the uncontrollable factors.

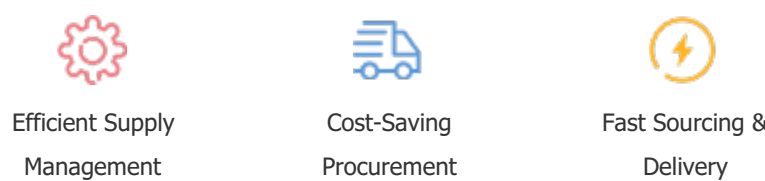
Contact us if you have any questions.

## Payment Support

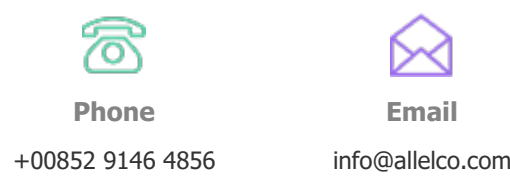
The payment method can be chosen from the methods shown below:  
Wire Transfer (T/T, Bank Transfer), Western Union, Credit card,  
PayPal.



## Your Faithful Supply Chain Partner -



Contact us if you have any questions.



## Certifications & Memberships



View More