

Image may be representation.
See specifications for product details.



LIS331DLFTR

| | |
|--------------------------|---|
| Manufacturer Part Number | LIS331DLFTR |
| Manufacturer | STMicroelectronics |
| Allelco Part Number | 32D-LIS331DLFTR |
| ECAD Model | Request Free CAD Models |
| Parts Description | ACCELEROMETER 2-8G I2C/SPI 16LGA |
| Package | 16-VFLGA |
| Data sheet | LIS331DLF.pdf |
| RoHs Status | ROHS3 Compliant |

[Get a Quote](#)

LIS331DLFTR - STMicroelectronics.New Original in Stock. Download Linear Technology LIS331DLFTR datasheet/specifications on AllelcoElec.com.
Request a quote for LIS331DLFTR, please send us email: info@allelco.com

Specifications

LIS331DLFTR Tech Specifications

LIS331DLFTR - STMicroelectronics technical specifications, attributes, parameters

| Product Attribute | Attribute Value | Product Attribute | Attribute Value |
|-------------------------|--------------------|-----------------------|--|
| Manufacturer | STMicroelectronics | Output Type | I ² C, SPI |
| Voltage - Supply | 2.16V ~ 3.6V | Operating Temperature | -40°C ~ 85°C (TA) |
| Type | Digital | Mounting Type | Surface Mount |
| Supplier Device Package | 16-LGA (3x3) | Features | Adjustable Bandwidth, Selectable Scale, Sleep Mode |
| Series | - | Base Product Number | LIS331 |
| Sensitivity (mV/g) | - | Bandwidth | 25Hz ~ 200Hz |
| Sensitivity (LSB/g) | 16 (±2g) ~ 4 (±8g) | Axis | X, Y, Z |
| Package / Case | 16-VFLGA | Acceleration Range | ±2g, 4g, 8g |
| Package | Tape & Reel (TR) | | |

Parts with Similar Specifications

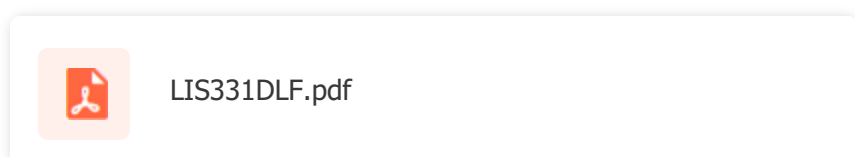
The three parts on the right have similar specifications to STMicroelectronics LIS331DLFTR

| Product Attribute | | | | |
|-------------------------|--|--|--|--|
| Part Number | LIS331DLFTR | LIS331DLH | LIS302DLH | LIS331DLHTR |
| Manufacturer | STMicroelectronics | STMicroelectronics | STMicroelectronics | STMicroelectronics |
| Package | Tape & Reel (TR) | Tray | Tray | Tape & Reel (TR) |
| Package / Case | 16-VFLGA | 16-VFLGA | 14-VFLGA | 16-VFLGA |
| Base Product Number | LIS331 | LIS331 | LIS302 | LIS331 |
| Type | Digital | Digital | Digital | Digital |
| Series | - | - | - | - |
| Sensitivity (mV/g) | - | - | - | - |
| Supplier Device Package | 16-LGA (3x3) | 16-LGA (3x3) | 14-LGA (3x5) | 16-LGA (3x3) |
| Axis | X, Y, Z | X, Y, Z | X, Y, Z | X, Y, Z |
| Output Type | I ² C, SPI | I ² C, SPI | I ² C, SPI | I ² C, SPI |
| Operating Temperature | -40°C ~ 85°C (TA) | -40°C ~ 85°C (TA) | -40°C ~ 85°C (TA) | -40°C ~ 85°C (TA) |
| Sensitivity (LSB/g) | 16 (±2g) ~ 4 (±8g) | 1000 (±2g) ~ 256 (±8g) | 1000 (±2g) ~ 256 (±8g) | 1000 (±2g) ~ 256 (±8g) |
| Voltage - Supply | 2.16V ~ 3.6V | 2.16V ~ 3.6V | 2.16V ~ 3.6V | 2.16V ~ 3.6V |
| Acceleration Range | ±2g, 4g, 8g | ±2g, 4g, 8g | ±2g, 4g, 8g | ±2g, 4g, 8g |
| Mounting Type | Surface Mount | Surface Mount | Surface Mount | Surface Mount |
| Features | Adjustable Bandwidth, Selectable Scale, Sleep Mode | Adjustable Bandwidth, Selectable Scale, Sleep Mode | Adjustable Bandwidth, Selectable Scale, Sleep Mode | Adjustable Bandwidth, Selectable Scale, Sleep Mode |
| Bandwidth | 25Hz ~ 200Hz | 25Hz ~ 500Hz | 25Hz ~ 500Hz | 25Hz ~ 500Hz |

LIS331DLFTR Datasheet PDF

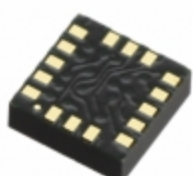
Download LIS331DLFTR pdf datasheets and STMicroelectronics documentation for LIS331DLFTR - STMicroelectronics.

HTML Datasheet



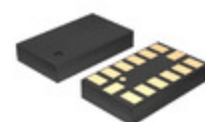
Customers Also Interested in

Recommended Products



LIS331DLH

STMicroelectronics
ACCELEROMETER 2-8G I2C/SPI
16LGA



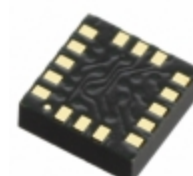
LIS302DLH

STMicroelectronics
ACCELEROMETER 2-8G I2C/SPI
14LGA



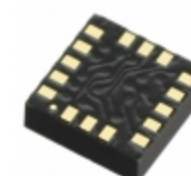
LIS331DLETR

STMicroelectronics



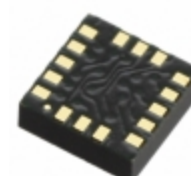
LIS331DLHTR

STMicroelectronics
ACCELEROMETER 2-8G I2C/SPI
16LGA



LIS331DLMTR

STMicroelectronics
ACCELEROMETER 2-8G I2C/SPI
16LGA



LIS331HH

STMicroelectronics
ACCEL 6-24G I2C/SPI 16LGA

LIS302SG
STMicroelectronics
ACCELEROMETER 2G ANALOG 14LGA

LIS302DLTR
STMicroelectronics
ACCEL 2.3-9.2G I2C/SPI 14LGA

LIS332AR
STMicroelectronics
ACCELEROMETER 2G ANALOG 16LGA

LIS331HHTR
STMicroelectronics
ACCEL 6-24G I2C/SPI 16LGA

LIS331DLF
STMicroelectronics
ACCELEROMETER 2-8G I2C/SPI 16LGA

LIS302DLTR8
STMicroelectronics

LIS332ARTR
STMicroelectronics
ACCELEROMETER 2G ANALOG 16LGA

LIS331DL
STMicroelectronics
ACCEL 2.3-9.2G I2C/SPI 16LGA

LIS302DL
STMicroelectronics
ACCEL 2.3-9.2G I2C/SPI 14LGA

LIS331ALTR
STMicroelectronics
ACCELEROMETER 2G ANALOG 16LGA

LIS331DLM
STMicroelectronics
ACCELEROMETER 2-8G I2C/SPI 16LGA

LIS331DLTR
STMicroelectronics
ACCEL 2.3-9.2G I2C/SPI 16LGA

Shipment

Delivery Time

In-stock items can be shipped within 24 hours. Some parts will be arranged for delivery within 1-2 days from the date all items arrive at our warehouse. And Allelco ships order once a day at about 17:00, except Sunday. Once the goods are shipped, the estimated delivery time depends on the shipping methods and Delivery destination. The table below shows are the logistic time for some common countries.

Delivery Cost

- > Use your express account for shipment if you have one.
 - > Use our account for the shipment. Refer to the table below for the approximate charges.
- (Different time frame / countries / package size has different price.)

Delivery Method

- > Global Common Shipment by DHL / UPS / FedEx / TNT / EMS / SF we support.
- > Others more shipping ways, please get in touch with your customer manager.

| Common Countries Logistic Time Reference | | |
|--|----------------|--------------------|
| Region | Country | Logistic Time(Day) |
| America | United States | 5 |
| | Brazil | 7 |
| Europe | Germany | 5 |
| | United Kingdom | 4 |
| | Italy | 5 |
| Oceania | Australia | 6 |
| | New Zealand | 7 |
| Asia | India | 6 |
| | Japan | 7 |
| Middle East | Israel | 6 |

| DHL & FedEx Shipment Charges Reference | |
|--|----------------------|
| Shipment charges(KG) | Reference DHL(USD\$) |
| 0.00kg-1.00kg | USD\$60.00 |
| 1.00kg-2.00kg | USD\$70.00 |
| 2.00kg-3.00kg | USD\$80.00 |

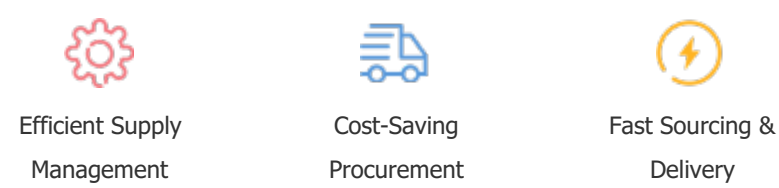
Note: The above table is for reference only. There may have some data bias for the uncontrollable factors.
Contact us if you have any questions.

Payment Support

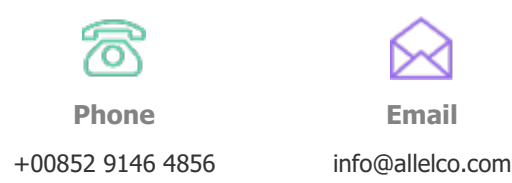
The payment method can be chosen from the methods shown below:
Wire Transfer (T/T, Bank Transfer), Western Union, Credit card, PayPal.



Your Faithful Supply Chain Partner -



Contact us if you have any questions.



Certifications & Memberships



[View More](#)

Contact us

Address: Flat/Rm C 13/F Harvard Commercial Building 105-111 Thomson Road, Wan Chai, Hong Kong
Phone: +00852 9146 4856
Fax: +00852 3010 8510
Email: info@Allelco.com