



Image may be representation.
See specifications for product details.



ADA4084-1ARZ-R7

Manufacturer Part Number	ADA4084-1ARZ-R7
Manufacturer	Analog Devices, Inc.
Allelco Part Number	32D-ADA4084-1ARZ-R7
ECAD Model	Request Free CAD Models
Parts Description	IC OPAMP GP 1 CIRCUIT 8SOIC
Package	8-SOIC (0.154", 3.90mm Width)
Data sheet	ADA4084-1ARZ-R7.pdf
RoHs Status	ROHS3 Compliant

Get a Quote

ADA4084-1ARZ-R7 - Analog Devices Inc..New Original in Stock. Download Linear Technology ADA4084-1ARZ-R7 datasheet/specifications on AllelcoElec.com.
Request a quote for ADA4084-1ARZ-R7, please send us email: info@allelco.com

Specifications

ADA4084-1ARZ-R7 Tech Specifications
ADA4084-1ARZ-R7 - Analog Devices Inc. technical specifications, attributes, parameters

Product Attribute	Attribute Value	Product Attribute	Attribute Value
Manufacturer	Analog Devices, Inc.	Operating Temperature	-40°C ~ 125°C
Voltage - Supply Span (Min)	3 V	Number of Circuits	1
Voltage - Supply Span (Max)	30 V	Mounting Type	Surface Mount
Voltage - Input Offset	40 µV	Gain Bandwidth Product	15.9 MHz
Supplier Device Package	8-SOIC	Current - Supply	625µA
Slew Rate	4.6V/µs	Current - Output / Channel	30 mA
Series	-	Current - Input Bias	140 nA
Package / Case	8-SOIC (0.154", 3.90mm Width)	Base Product Number	ADA4084
Package	Tape & Reel (TR)	Amplifier Type	General Purpose
Output Type	Rail-to-Rail	-3db Bandwidth	13.9 MHz

Parts with Similar Specifications

The three parts on the right have similar specifications to Analog Devices Inc. ADA4084-1ARZ-R7

Product Attribute				
Part Number	ADA4084-1ARZ-R7	ADA4077-4ARZ-R7	ADA4091-2ACPZ-R2	ADA4084-2ARMZ
Manufacturer	Analog Devices Inc.	Analog Devices Inc.	Analog Devices Inc.	Analog Devices Inc.
Gain Bandwidth Product	15.9 MHz	3.6 MHz	1.27 MHz	15.9 MHz
Mounting Type	Surface Mount	Surface Mount	Surface Mount	Surface Mount
Package / Case	8-SOIC (0.154", 3.90mm Width)	14-SOIC (0.154", 3.90mm Width)	8-WDFDN Exposed Pad, CSP	8-TSSOP, 8-MSOP (0.118", 3.00mm Width)
Output Type	Rail-to-Rail	-	Rail-to-Rail	Rail-to-Rail
Series	-	-	-	-
Number of Circuits	1	4	2	2
Package	Tape & Reel (TR)	Tape & Reel (TR)	Tape & Reel (TR)	Tube
Supplier Device Package	8-SOIC	14-SOIC	8-LFCSP-WD (3x3)	8-MSOP
Current - Input Bias	140 nA	400 pA	50 nA	140 nA
Base Product Number	ADA4084	ADA4077	ADA4091	ADA4084
Current - Supply	625µA	400µA (x4 Channels)	200µA (x4 Channels)	625µA (x2 Channels)
Slew Rate	4.6V/µs	1.2V/µs	0.46V/µs	4.6V/µs
Voltage - Input Offset	40 µV	15 µV	35 µV	60 µV
Current - Output / Channel	30 mA	10 mA	20 mA	30 mA
Operating Temperature	-40°C ~ 125°C	-40°C ~ 125°C	-40°C ~ 125°C	-40°C ~ 125°C
-3db Bandwidth	13.9 MHz	5.5 MHz	-	13.9 MHz
Amplifier Type	General Purpose	General Purpose	General Purpose	General Purpose
Voltage - Supply Span (Min)	3 V	5 V	3 V	3 V
Voltage - Supply Span (Max)	30 V	30 V	30 V	30 V

ADA4084-1ARZ-R7 Datasheet PDF

Download ADA4084-1ARZ-R7 pdf datasheets and Analog Devices Inc. documentation for ADA4084-1ARZ-R7 - Analog Devices Inc..

Other Related Documents

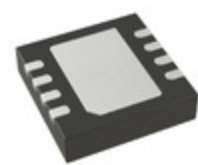
[Tape and Reel Packaging.pdf](#)

PCN Assembly/Origin

[Mult Dev 04/Apr/2023.pdf](#)

Customers Also Interested in

Recommended Products



ADA4077-4ARZ-R7

Analog Devices Inc.
IC OPAMP GP 4 CIRCUIT 14SOIC

ADA4091-2ACPZ-R2

Analog Devices Inc.
IC OPAMP GP 2 CIRCUIT 8LFCSP

ADA4084-2ARMZ

Analog Devices Inc.
IC OPAMP GP 2 CIRCUIT 8MSOP

ADA4077-2ARZ

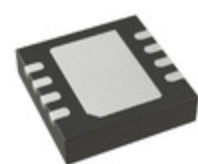
Analog Devices Inc.
IC OPAMP GP 2 CIRCUIT 8SOIC

ADA4084-2ARZ-R7

Analog Devices Inc.
IC OPAMP GP 2 CIRCUIT 8SOIC

ADA4084-4ARUZ

Analog Devices Inc.
IC OPAMP GP 4 CIRCUIT 14TSSOP



ADA4091-2ACPZ-R7

Analog Devices Inc.
IC OPAMP GP 2 CIRCUIT 8LFCSP



ADA4077-2BRZ

Analog Devices Inc.
IC OPAMP GP 2 CIRCUIT 8SOIC



ADA4077-4ARUZ-R7

Analog Devices Inc.
IC OPAMP GP 4 CIRCUIT 14TSSOP



ADA4084-2ARZ

Analog Devices Inc.
IC OPAMP GP 2 CIRCUIT 8SOIC



ADA4077-2ARZ-R7

Analog Devices Inc.
IC OPAMP GP 2 CIRCUIT 8SOIC



ADA4077-4ARUZ

Analog Devices Inc.
IC OPAMP GP 4 CIRCUIT 14TSSOP



ADA4077-2BRZ-R7

Analog Devices Inc.
IC OPAMP GP 2 CIRCUIT 8SOIC



ADA4084-2ACPZ-R7

Analog Devices Inc.
IC OPAMP GP 2 CIRCUIT 8LFCSP



ADA4084-1ARZ

Analog Devices Inc.
IC OPAMP GP 1 CIRCUIT 8SOIC



ADA4084-1ARJZ-R7

Analog Devices Inc.
IC OPAMP GP 1 CIRCUIT SOT23-5



ADA4077-4ARZ

Analog Devices Inc.
IC OPAMP GP 4 CIRCUIT 14SOIC



ADA4084-2ARMZ-R7

Analog Devices Inc.
IC OPAMP GP 2 CIRCUIT 8MSOP

Shipment

Delivery Time

In-stock items can be shipped within 24 hours. Some parts will be arranged for delivery within 1-2 days from the date all items arrive at our warehouse. And Alleco ships order once a day at about 17:00, except Sunday. Once the goods are shipped, the estimated delivery time depends on the shipping methods and Delivery destination. The table below shows are the logistic time for some common countries.

Delivery Cost

> Use your express account for shipment if you have one.

> Use our account for the shipment. Refer to the table below for the approximate charges.

(Different time frame / countries / package size has different price.)

Delivery Method

> Global Common Shipment by DHL / UPS / FedEx / TNT / EMS / SF we support.

> Others more shipping ways, please get in touch with your customer manager.

Common Countries Logistic Time Reference		
Region	Country	Logistic Time(Day)
America	United States	5
	Brazil	7
Europe	Germany	5
	United Kingdom	4
	Italy	5
Oceania	Australia	6
	New Zealand	7
Asia	India	6
	Japan	7
Middle East	Israel	6

DHL & FedEx Shipment Charges Reference	
Shipment charges(KG)	Reference DHL(USD\$)
0.00kg-1.00kg	USD\$60.00
1.00kg-2.00kg	USD\$70.00
2.00kg-3.00kg	USD\$80.00

Note: The above table is for reference only. There may have some data bias for the uncontrollable factors.

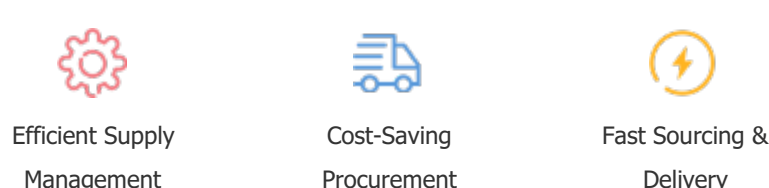
Contact us if you have any questions.

Payment Support

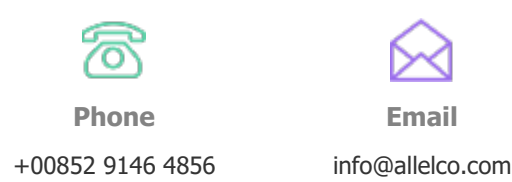
The payment method can be chosen from the methods shown below:
Wire Transfer (T/T, Bank Transfer), Western Union, Credit card,
PayPal.



Your Faithful Supply Chain Partner -



Contact us if you have any questions.



Certifications & Memberships



View More



WWW.ALLECOELEC.COM

Contact us

Address: Flat/Rm C 13/F Harvard Commercial Building 105-111 Thomson Road, Wan Chai, Hong Kong

Phone: +00852 9146 4856

Fax: +00852 3010 8510

Email: info@Alleco.com

Copyright © 2012-2023 AllecoElec.com. All rights reserved.