



Image may be representation.  
See specifications for product details.



## EPM3064ATC44-10N

Manufacturer Part Number **EPM3064ATC44-10N**

Manufacturer **Intel**

Allelco Part Number **32D-EPM3064ATC44-10N**

ECAD Model [Request Free CAD Models](#)

Parts Description **IC CPLD 64MC 10NS 44TQFP**

Package **44-TQFP**

Data sheet **[MAX 3000A Device Family Data Sheet.pdf](#)**

**Get a Quote**

EPM3064ATC44-10N - Intel.New Original in Stock. Download Linear Technology EPM3064ATC44-10N datasheet/specifications on AllelcoElec.com.

Request a quote for EPM3064ATC44-10N, please send us email: [info@allelco.com](mailto:info@allelco.com)

### Specifications

EPM3064ATC44-10N Tech Specifications

EPM3064ATC44-10N - Intel technical specifications, attributes, parameters

Product Attribute	Attribute Value	Product Attribute	Attribute Value
Manufacturer	Intel	Number of Macrocells	64
Voltage Supply - Internal	3V ~ 3.6V	Number of Logic Elements/Blocks	4
Supplier Device Package	44-TQFP (10x10)	Number of I/O	34
Series	MAX® 3000A	Number of Gates	1250
Programmable Type	In System Programmable	Mounting Type	Surface Mount
Package / Case	44-TQFP	Delay Time tpd(1) Max	10 ns
Package	Tray	Base Product Number	EPM3064
Operating Temperature	0°C ~ 70°C (TA)		

### Parts with Similar Specifications

The three parts on the right have similar specifications to Intel EPM3064ATC44-10N

Product Attribute				
Part Number	EPM3064ATC44-10N	EPM3064ATC100-4N	EPM3064ATC44-10	EPM3064ATC44-7
Manufacturer	Intel	Intel	Intel	Intel
Programmable Type	In System Programmable	In System Programmable	In System Programmable	In System Programmable
Operating Temperature	0°C ~ 70°C (TA)	0°C ~ 70°C (TA)	0°C ~ 70°C (TA)	0°C ~ 70°C (TA)
Number of Gates	1250	1250	1250	1250
Delay Time tpd(1) Max	10 ns	4.5 ns	10 ns	7.5 ns
Voltage Supply - Internal	3V ~ 3.6V	3V ~ 3.6V	3V ~ 3.6V	3V ~ 3.6V
Package	Tray	Tray	Tray	Tray
Package / Case	44-TQFP	100-TQFP	44-TQFP	44-TQFP
Supplier Device Package	44-TQFP (10x10)	100-TQFP (14x14)	44-TQFP (10x10)	44-TQFP (10x10)
Base Product Number	EPM3064	EPM3064	EPM3064	EPM3064
Number of Macrocells	64	64	64	64
Number of I/O	34	66	34	34
Series	MAX® 3000A	MAX® 3000A	MAX® 3000A	MAX® 3000A
Mounting Type	Surface Mount	Surface Mount	Surface Mount	Surface Mount
Number of Logic Elements/Blocks	4	4	4	4

### EPM3064ATC44-10N Datasheet PDF

Download EPM3064ATC44-10N pdf datasheets and Intel documentation for EPM3064ATC44-10N - Intel.

#### Datasheets

[MAX 3000A Device Family Data Sheet.pdf](#)

#### PCN Packaging

[All Dev Pkg Chg 1/Aug/2018.pdf](#)

[Mult Dev Dessicant Chg 19/Jul/2019.pdf](#)

#### PCN Other

[Software Disc 06/Nov/2020.pdf](#)

#### PCN Design/Specification

[Mult Series Software Chgs 26/Mar/2020.pdf](#)

[Bond Wire 4/Sept/2008.pdf](#)

#### Errata

[MAX7000AE\(B\)/3000A Errata.pdf](#)



Mult Device EOL 1/Jun/2017.pdf

## Customers Also Interested in

### Recommended Products



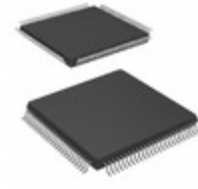
**EPM3064ATC100-4N**  
Intel  
IC CPLD 64MC 4.5NS 100TQFP



**EPM3064ATC44-10**  
Intel  
IC CPLD 64MC 10NS 44TQFP



**EPM3064ATC44-7**  
Intel  
IC CPLD 64MC 7.5NS 44TQFP



**EPM3064ATC100-4**  
Intel  
IC CPLD 64MC 4.5NS 100TQFP



**EPM3064ATC44-7N**  
Intel  
IC CPLD 64MC 7.5NS 44TQFP



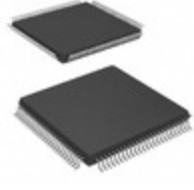
**EPM3064ATC100**  
Altera (Intel)



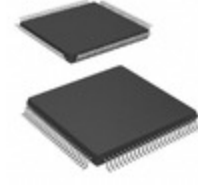
**EPM3064ATC44-4**  
Intel  
IC CPLD 64MC 4.5NS 44TQFP



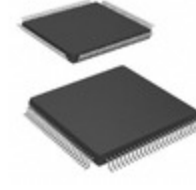
**EPM3064ATC100-7N**  
Intel  
IC CPLD 64MC 7.5NS 100TQFP



**EPM3064ATI100-10N**  
Intel  
IC CPLD 64MC 10NS 100TQFP



**EPM3064ATC100-7**  
Intel  
IC CPLD 64MC 7.5NS 100TQFP



**EPM3064ATI100-10**  
Intel  
IC CPLD 64MC 10NS 100TQFP



**EPM3064ATC44**  
Altera (Intel)



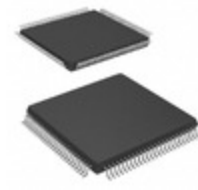
**EPM3064ATI44-10N**  
Intel  
IC CPLD 64MC 10NS 44TQFP



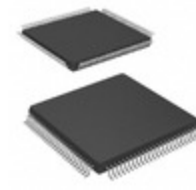
**EPM3064ATI44-10**  
Intel  
IC CPLD 64MC 10NS 44TQFP



**EPM3064ATC-44-10N**  
Altera (Intel)



**EPM3064ATC100-10N**  
Intel  
IC CPLD 64MC 10NS 100TQFP



**EPM3064ATC100-10**  
Intel  
IC CPLD 64MC 10NS 100TQFP



**EPM3064ATC44-4N**  
Intel  
IC CPLD 64MC 4.5NS 44TQFP

## Shipment

### Delivery Time

In-stock items can be shipped within 24 hours. Some parts will be arranged for delivery within 1-2 days from the date all items arrive at our warehouse. And Allelco ships order once a day at about 17:00, except Sunday. Once the goods are shipped, the estimated delivery time depends on the shipping methods and Delivery destination. The table below shows are the logistic time for some common countries.

### Delivery Cost

- > Use your express account for shipment if you have one.
  - > Use our account for the shipment. Refer to the table below for the approximate charges.
- (Different time frame / countries / package size has different price.)

### Delivery Method

- > Global Common Shipment by DHL / UPS / FedEx / TNT / EMS / SF we support.
- > Others more shipping ways, please get in touch with your customer manager.

Common Countries Logistic Time Reference		
Region	Country	Logistic Time(Day)
America	United States	5
	Brazil	7
Europe	Germany	5
	United Kingdom	4
	Italy	5
Oceania	Australia	6
	New Zealand	7
Asia	India	6
	Japan	7
Middle East	Israel	6

DHL & FedEx Shipment Charges Reference	
Shipment charges(KG)	Reference DHL(USD\$)
0.00kg-1.00kg	USD\$60.00
1.00kg-2.00kg	USD\$70.00
2.00kg-3.00kg	USD\$80.00

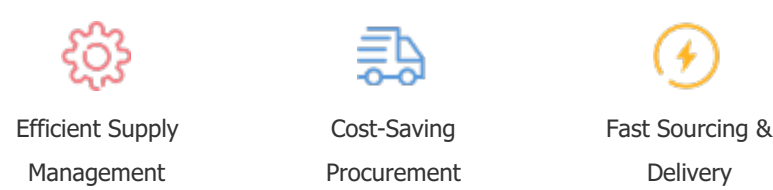
**Note:** The above table is for reference only. There may have some data bias for the uncontrollable factors.  
Contact us if you have any questions.

### Payment Support

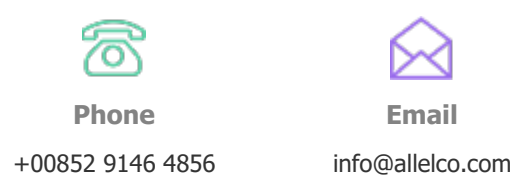
The payment method can be chosen from the methods shown below:  
Wire Transfer (T/T, Bank Transfer), Western Union, Credit card, PayPal.



### Your Faithful Supply Chain Partner -



Contact us if you have any questions.



### Certifications & Memberships



[View More](#)

### Contact us

Address: Flat/Rm C 13/F Harvard Commercial Building 105-111 Thomson Road, Wan Chai, Hong Kong  
Phone: +00852 9146 4856  
Fax: +00852 3010 8510  
Email: info@Allelco.com